



## VERMONT AGENCY OF TRANSPORTATION

VTrans

Vermont Agency of Transportation

### *AT-THE-READY (ATR) CONSULTANT ENGINEERING SERVICES FOR MUNICIPALITIES*

### CONSTRUCTION INSPECTION CATEGORY

January 6, 2017



*Submitted by:*

John Turner Consulting, Inc.  
12 Gregory Drive, Unit 7  
South Burlington, VT 05403

*In association with:*  
DiBernardo Associates & Inc.



GEOTECHNICAL ▼ ENVIRONMENTAL ▼ CONSTRUCTION ENGINEERING AND INSPECTION ▼ TESTING

TECHNICAL NARRATIVE – CONSTRUCTION INSPECTION CATEGORY

TABLE OF CONTENTS

*A. Cover Letter*

*Page Number*

*B. General Firm Information*

1. Introduction to Consultant Firm ..... 1-2

2. Organization Chart ..... 3

3. Availability Chart..... 4

*C. Construction Inspection Services*

1. Qualifications and Experience of Firm ..... 6-7

2. Brief Examples of Similar Projects ..... 7-14

3. Key Personnel..... 15

*D. Resumes ..... 16-30*



GEOTECHNICAL ▼ ENVIRONMENTAL ▼ CONSTRUCTION ENGINEERING AND INSPECTION ▼ TESTING

January 6, 2016

Vermont Agency of Transportation  
Municipal Assistance Bureau  
Nydia Lugo, Technical Development Engineer  
1 National Life Drive  
Montpelier, VT 05633-5001

Re: At-The-Ready (ATR) Consultant Engineering Services for Municipalities  
*Construction Inspection Category*

Dear Ms. Lugo:

In response to your RFQ dated November 28, 2016, John Turner Consulting, Inc. (JTC) is pleased to submit this proposal for providing At-The-Ready Consultant Engineering Services for Vermont Municipalities to the Vermont Agency of Transportation for the *Construction Inspection Category*. JTC has enjoyed a long history of providing engineering and construction inspection services to municipalities throughout Vermont and New England. We pride ourselves in being highly responsive to our clients' needs, providing quality service, and working collaboratively with all stakeholders in a professional and respectful manner. The enclosed submission includes all the required submittals requested in the RFQ regarding our qualifications, experience, resources and staff, and scope of services offered.

JTC offers the following benefits:

- Relevant Experience: Successful performance on many local transportation improvement projects throughout Vermont and other New England states: Waitsfield, VT Covered Bridge and Stormwater Improvements Project; Dover VT Valley Trail Segment A Project; Jericho VT Multimodal Connection Project; Rockingham/Saxton River VT Safe Schools Project; Rutland VT City Center Project, City of Providence, RI, City of Portland, ME, MaineDOT, MassPort Authority, City of Portsmouth, NH and many others. Please refer to project profiles for complete list.
- Skilled Team: We have a strong team which will be led by our highly-experienced Program Manager, Chris Kaufman. Our team will consist of a well-seasoned staff of Resident Engineers. Please refer to the resumes in the proposal.
- Excellent Communications: JTC prides itself on timely and accurate reporting and communications.
- In-House Materials Testing: JTC offers technically superior in-house materials testing services.
- Surveying Support: JTC will be teaming with DiBernardo & Associates, Inc. of Bellows Falls, VT to offer surveying services, as-built documentation support, and project record plan verification.

We have received and read through both RFQ Change Documents #1 and #2. We look forward to discussing our approach and qualifications with you in more detail.

Respectfully submitted,

Christopher A. Kaufman  
John Turner Consulting, Inc.  
Program Manager  
CELL: 802-745-7426/Email: [chrisk@consultJTC.com](mailto:chrisk@consultJTC.com)

# 1 INTRODUCTION TO CONSULTANT FIRM

John Turner Consulting, Inc.  
S-Corporation  
Established in 1997

## Vermont Locations:

12 Gregory Drive, Unit 7  
South Burlington, Vermont 05403

4775 Route 14  
White River Junction, Vermont 05001  
Phone: 802-295-1100

Contact Email: [chrisk@consultjtc.com](mailto:chrisk@consultjtc.com)

## Corporate Office:

19 Dover Street  
Dover, New Hampshire 03820  
Phone: 603-749-1841  
Direct: 603-234-0850  
Contact Email: [johnt@consultjtc.com](mailto:johnt@consultjtc.com)

John Turner Consulting, Inc. (JTC) has been in business since 1997 providing construction engineering and inspections, geotechnical engineering, environmental engineering, special inspections & materials testing services to public and private clients throughout New England. JTC has provided resident inspections of varying scope on over 500 projects throughout New England. Since 2003, we have provided these services for the NHDOT and Maine DOT (3-year - \$7,150,000.) JTC has been awarded Construction Inspection Oversight multi-year Term Contracts with the City of Lewiston and Portland, ME and City of Providence, RI. To service our clients, we currently maintain a staff of 80+ well trained and certified technical professionals throughout our service area. JTC strategically hires staff in geographic locations to ensure our services are as efficient as possible for our clientele. JTC has more than doubled in size since 2010.

JTC has 20 years of construction inspection experience throughout Vermont and New England. JTC's proposed team is comprised of highly experienced Resident Engineers with specific expertise to service Vermont Municipalities effectively. Construction management and construction inspection services are the core of what we do. As such, we give these contracts our full attention and work hard to maintain our clients' trust. To be placed on the Qualified Roster at the Vermont Agency of Transportation (VTrans) is very important to us and we will staff each awarded municipal project with a team of professionals of the highest quality. Our team will bring you:

- Highly qualified/experienced and dedicated construction inspectors and support staff.
- Depth of resources/staff to service the municipalities for the 3-year contract duration.
- Consistency of staff from year to year.
- Staff who are strategically located to efficiently cover the large geography for this contract.
- A proven track record of delivering successful projects.
- Knowledge of the VTrans guidelines, standards, and procedures.
- Depth of similar experience on Federally Funded projects.

- Superior technical knowledge to meet varied local transportation project needs.
- Efficiency/consistency in scheduling, reporting and billing.

*Our team is made up of the following firms:*

John Turner Consulting, Inc. (JTC) – JTC offers 20 years of construction experience in diverse civil and construction engineering projects such as roadway, bridge, aviation, geotechnical, quality assurance, construction materials testing and monitoring, schedule/claims analysis, community outreach, constructability reviews, project scheduling, and environmental permitting.

Experienced Construction Inspection services including, but is not limited to: road and bridge construction, roadway rehabilitation projects including mill and re-surface, asphalt and concrete sidewalks, building foundation construction, bicycle and pedestrian projects, culvert replacement and upgrades, transit related projects, aviation projects, storm water drainage upgrades, catch basin upgrades and replacements, traffic intersection projects, erosion and sediment control, landscaping, street lighting, road safety evaluations, roadway signage and striping projects.

Our inspection services include contractor oversight, construction meeting attendance and documentation, verification and documentation of all project material quantities, certification of all construction materials, contractor invoice and pay request approvals, reviews of all shop submittals, onsite traffic safety verification, response to Request for Information (RFI's), change order development, final certification documentation, punch lists, report and photo documentation, project file management, and final as-built drawings.

Value Added Services:

Material Testing services include construction testing in the field, JTC Laboratory, and at manufacturing plants. Each member of JTC's field and laboratory staff has qualified for one or more programs, including:

- NETTCP – Soils, Concrete, and/or Asphalt (for field, lab, and plant)
- ACI (American Concrete Institute) – Concrete Field Technician
- ACI – Concrete Lab Technician, ACI Strength Testing Technician, ACI Aggregate Testing Technician
- NICET Level I and II Inspectors
- Troxler Nuclear Density Gauge
- HAZWOPER (40-hour) Safety Training
- Structural Steel: ultrasonic, mag particle, dye-penetrant and certified welding inspections (CWI)
- PCI (Pre-cast/Prestressed Concrete Institute) – Levels I and II Inspectors
- ICC (International Code Council) – Concrete Reinforcing Steel and Masonry Inspectors, Fireproofing
- Post Tensioning Inspectors
- NFPA Certified Firestopping Inspectors (Pro Board Certified)

JTC Laboratory - JTC has complete laboratory facilities for the testing and evaluation of concrete, asphalt, masonry, soils, fireproofing and steel, as well as miscellaneous materials such as wood. JTC's laboratory meets the requirements of ASTM C1077 and E329 and has been:

- Successfully inspected by the Cement and Concrete Reference Laboratory (CCRL)
- Successfully inspected by New England Transportation Technician Certification Program (NETTCP)
- Accredited by the American Association of State and Highway Transportation Officials (AASHTO)
- Validated by the Army Corps of Engineers

## Sub-Consultant:

### DiBernardo & Associates, Land Surveyors

440 Rockingham Road  
Bellows Falls, Vermont 05101

2 Taylor Street No. Walpole, NH 03609  
Phone 802-463-3031

Established in 1967

Contact: Joseph DiBernardo, email: [joedibo@comcast.net](mailto:joedibo@comcast.net)

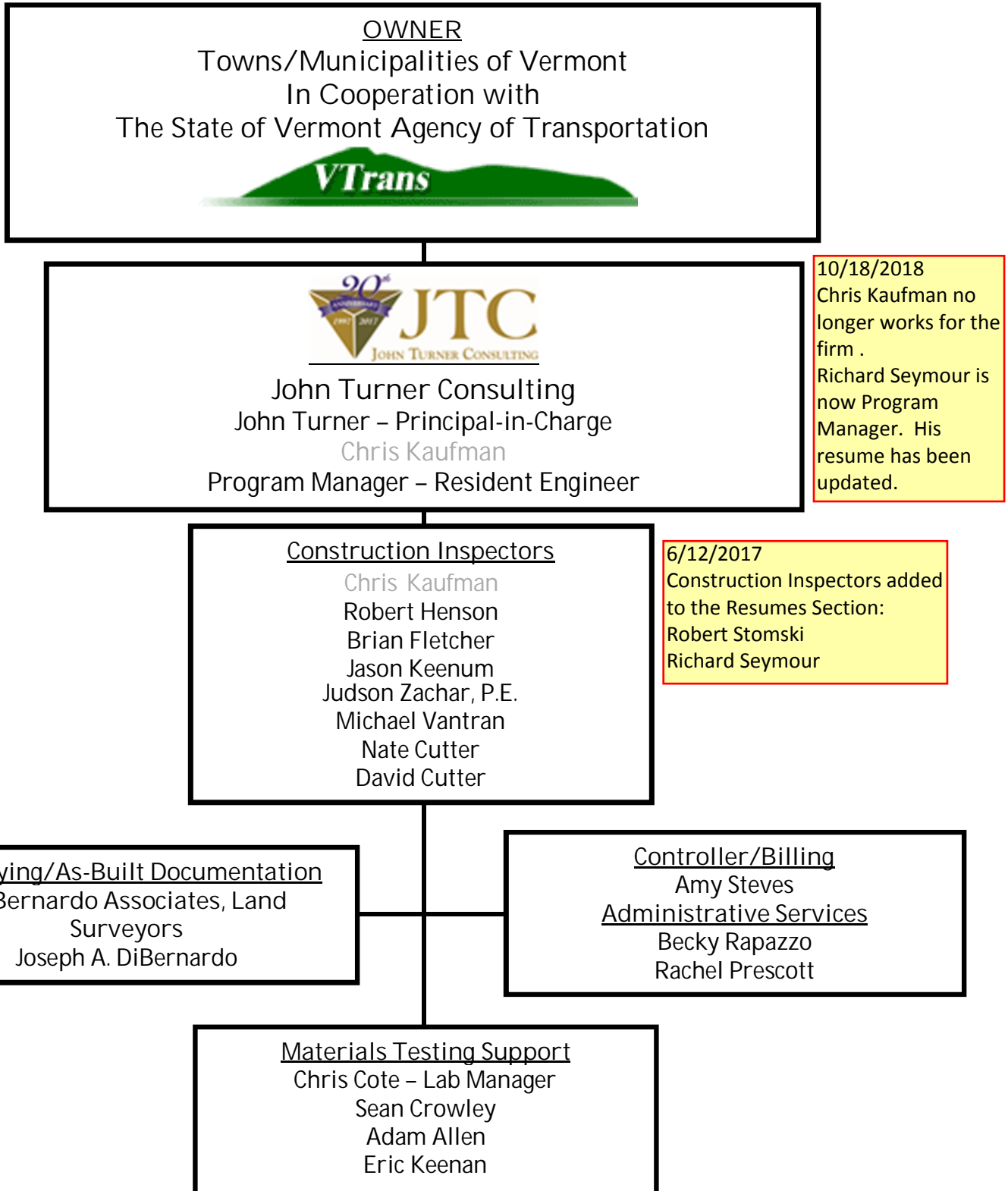
DiBernardo and Associates is a Vermont and New Hampshire land surveying firm that offers a wide variety of Land Surveying and Engineering surveying services in Vermont and New Hampshire. Based out of Bellows Falls, Vermont, DiBernardo Associates offers a professional product and is a family owned business that strives to meet and exceed client expectations.

Typical services include but are not limited to Boundary Surveys; Topographic Surveys; Engineering Existing Conditions Surveys; GPS and Photo Control Surveys; Elevation Certificates and Letter of Map Amendments (LOMA's); Construction Layout Services; Tax Mapping Services & GIS.

DiBernardo Associates has been in business since 1967 originally started by Aurelius DiBernardo who attended the University of Vermont in the Civil Engineering program. Aurelius was employed by Dufresne Henry Corp. out of college. At Dufresne Henry, Aurelius oversaw the survey crews coordinating with the Engineers and instructing the field crews on proper field procedures. In 1967 Aurelius decided to move out on his own and partnered up with Stuart Dauchy in Jamaica starting Dauchy DiBernardo Associates. Eventually Aurelius moved his portion of the business to Rockingham Vermont where he was from and started DiBernardo Associates.

In 2007 Aurelius sold the business to his son Joseph. Joseph is a graduate of Becker College, SUNY ESF and SUNY Alfred where he received a Bachelor of Science Degree in Business Administration, Associates of Applied Science in Forest Technology with an emphasis in Surveying and Associates of Applied Science in Surveying Engineering respectively. Joseph worked for his father Aurelius since the age of 13 becoming more serious at the age of 24 when he returned to Vermont to work for his father and eventually take over the family business. In 2007 Joseph purchased the business from his father and became the sole proprietor of DiBernardo Associates. Aurelius at the age of 76 is still working at DiBernardo Associates as a consultant. Currently both Joseph and Aurelius are active Land Surveyors in Vermont and New Hampshire. Combined Joseph and Aurelius have over 60 years of experience as Licensed Land Surveyors.

## 2 ORGANIZATIONAL CHART – CONSTRUCTION INSPECTION





### 3 AVAILABILITY CHART

The key staff listed below are those that will be assigned to the local improvement projects. All staff will be allocated the necessary time to fully dedicate their efforts to each project awarded by the municipalities. Upon notification and award of each contract by the municipalities, JTCs Program Manager, Chris Kaufman, will assign the project to a specific staff member based on their availability, geographic location, and project expertise. As of the date of this RFQ, our key staff have the following availability listed below. As we are awarded each contract, we will manage our workload to free up key staff below to ensure they will be available full time to focus on the project. As JTC also continues to grow and add staff over time, we will continue to provide our in-house construction inspection training and mentoring programs to provide certified and experienced staff to each project. Any substitutions or additions of proposed staff will be requested in advance and approved by VTrans, and the Municipality, if the contract has been awarded.

Employee Name	Title/Classification	#of Relevant Years of Experience	% of Time to Dedicate	No. of Current Projects
John Turner	President/Principal-in-Charge	23	25	5
Chris Kaufman	Program Manager/Resident Engineer	28	100	1
Robert Henson	Resident Engineer	25	100	0
Brian Fletcher	Resident Engineer	10	100	0
Jason Keenum	Resident Engineer	10	75	1
Judson Zachar, PE	Resident Engineer	19	35	2
Michael Vantran	Resident Engineer	27	30	4
Nate Cutter	Resident Engineer	9	50	0
David (Josh) Cutter	Resident Engineer	8	50	0
Chris Cote	Testing Technician	14	75	0
Sean Crowley	Testing Technician	13	75	1
Adam Allen	Testing Technician	3	100	1
Eric Keenan	Testing Technician	4	100	1



## C . CONSTRUCTION INSPECTION SERVICES

### Understanding of the Scope of Work

JTC has thoroughly reviewed the RFQ document and has a good understanding of the work. The State of Vermont Agency of Transportation (VTTrans) seeks to develop a qualified roster of At-The-Ready (ATR) consultant engineering firms to support local Vermont Towns and/or municipalities with local government transportation managed, federally funded transportation projects by having pre-approved list of consultants approved for a period of 3 years. The services of Engineering Consultant firms for the Construction Inspection Category are to provide inspection; record keeping; preparation of reports, participation in construction meetings; calculation and verification of quantities; review of invoices and pay requests; review of traffic control; development of as-built plans; inspection and approval of materials; review and recording of reports for materials and equipment inspection and testing; and, work related to construction inspection. We also understand that the Consultant firm cannot provide design or municipal project management services on any project it wishes to provide with construction inspection services.

### 1. QUALIFICATIONS AND EXPERIENCE OF THE FIRM

John Turner Consulting has provided Construction Inspection Services for over 600 highway, road, bridge, culvert, utility and bike/pedestrian path projects over the last 20 years. JTC also provides HMA paving inspections for QC &/or QA paving assignments for NHDOT, VTTrans, MaineDOT, CTDOT, RIDOT and MassDOT projects daily during the paving season. JTC has continued to grow its portfolio of government contracts as evidenced by the renewal of many term contracts with continued positive feedback from both municipal and State DOT Management agencies. The JTC Team has staff with solid experience and past performance for every aspect of services spelled out in the SOW.

JTC has the experience, professional staff, facilities, and resources to be an excellent choice for inclusion on the VTTrans ATR roster. JTC currently has a similar contract with the MaineDOT for *Resident Inspection* services and has performed these services in an ongoing term contract since 2011. We recently renewed our services in 2015 with a \$6,150,000 GCA Term Contract for an additional 3.5 years. We also have very similar contracts with RIDOT, City of Portland, ME, MassPort Authority, City of Portsmouth, NH and the City of Providence, RI. We have provided \$1.75M of Construction Management and Resident Inspection oversight services for the City of Providence over the past 4 years.

### Federally Funded Projects

JTC personnel have been involved in many federally funded transportation construction projects in Vermont and throughout New England. These projects have followed all required federal aid construction contract requirements such as non-discrimination, Davis Bacon Provisions, construction safety standards, implementation of the Federal Clean Water Act, equal opportunity regulations, fair wage verification requirements, and federal highway standards.

*Our proposed project team has a strong working knowledge of Federal regulations involved in projects that affect design, permitting, environmental impact, ROW, and construction including but not limited to:*

- CFR Title 23 (Federal Highways), Title 49 (Transportation)
- Manual on Uniform Traffic Control Devices (MUTCD), Federal Highway Administration
- 28 CFR, Part 36, American with Disabilities Act
- National Environmental Protection Act
- AASHTO Guide for Design of Pavement Structures & Specifications for Highways
- AASHTO Roadside Design Guide
- Section 106 of the National Historic Preservation Act



- Section 4(f) of the Dept. of Transportation Act
- Section 404 (Wetlands) of the Federal Clean Water Act

*JTC has provided construction inspection services for more than 500 federally funded projects. Below are examples of recent Federally Funded projects in the region:*

- Border Patrol Project in Swanton and Canaan, Vermont
- City Center Project – City of Rutland, Vermont
- Valley Trail Project Segment A – Town of Dover, Vermont
- Saxton River Safe School Project – Town of Rockingham, Vermont
- Covered Bridge Rehabilitation & Road Reconstruction - Town of Waitsfield, Vermont
- Multimodal Connection Project, Jericho, Vermont
- 3-year term contract with the City of Portland, Maine
- Construction Inspection contracts with the MaineDOT for Highway, Bridge & Multi-modal
- 3-year term materials contract with VTrans
- 5-year term contract City of Providence, Rhode Island Public Works Department
- 5-year term materials contract with CTDOT
- 2-year term materials contract with NHDOT
- More than 40 projects at the Portsmouth Naval Shipyard
- More than 10 projects at the Pease Air National Guard
- Army Reserve Center in Portsmouth, NH
- \$175 M Waterbury State Office Complex, Vermont
- Over 100 Construction Inspection projects for local municipalities throughout New England

*Our project team has significant experience with most Local and State regulations, policies, and guidance documents that potentially could impact municipal construction projects in terms of construction inspection, permitting, environmental impacts, and construction. Those include but are not limited to:*

- VTrans Municipal Assistance Bureau (MAB) Local Projects Guidebook for Locally Managed Projects
- Specifications for Contractor Services MAB Local Projects Guidebook
- Vermont Pedestrian and Bicycle Policy Plan (VTrans, January 2008)
- Vermont Pedestrian and Bicycle Planning and Design Manual (VTrans, Dec. 2002)
- VTrans Report on Shared-Use Path and Sidewalk Unit Costs (August 2014)
- VTrans Standard Specifications for Construction VTrans Construction Manual, VTrans Utilities and Structures Manual, VTrans Route Survey Manual, VTrans Local Transportation Facilities Guidebook, VTrans Policy for CADD Standards
- Categorical Exclusion evaluations per National Environmental Policy Act (VTrans)
- Utility Right of Way (ROW) coordination (VTrans);
- (ROW) easement including permanent and temporary construction easements (VTrans)
- Work in Highway ROW Permit 1111 (VTrans)
- Municipal Flood Hazard permit review via the Agency of Natural Resource, (VT ANR DEC)
- Streambed Alteration permit (VT ANR DEC)
- Construction and Operational Stormwater Permits (VT DEC)
- Vermont Wetland and Lakes/Ponds Rules
- Act 250 Land Use Development Law

## 2. BRIEF EXAMPLES OF SIMILAR PROJECTS

### CONNECTICUT DOT:

JTC received Pre-Qualification Status with the Connecticut Department of Transportation to provide Construction Engineering and Inspection for Roads and Bridges for the 2015 Calendar year. Furthermore, JTC provided inspection services on the first Design/Build bridge project in Connecticut starting in 2015. *JTC was informed in December 2016 that we are once again prequalified for Road and Bridge Construction Inspections for 2017-2018.*



### Valley Trail Segment A Project – Dover, VT

In 2016, JTC signed a contract with the Town of Dover, Vermont to perform construction management and resident engineering duties for this VTrans LTF funded project. This project included sidewalk roadway, and streetscape improvements for the length of approximately 2,086 feet along Route 100 in West Dover, Vermont. This project included approximately 1,925 linear of concrete sidewalks, 1,300 linear feet granite curbing, 1,200 linear feet drainage piping, 12 catch basins, bituminous asphalt paving, sub-base preparation, guardrail reset and replacement, pavement markings, detectable warning surfaces, crosswalk enhancements, road signs, electrical conduit, and 21 street lights. JTC performed all contract management functions such as evaluation of subcontractors, contractor invoice review, permitting compliance, maintenance of contract files, federal-aid DBE compliance, safety reviews, flagger monitoring, development of change orders, and schedule reviews. In addition, JTC conducted value engineering support, survey documentation, onsite inspections, and project closeout.

*Chris Kaufman from JTC Consulting was hired as a resident engineer to oversee a sidewalk and catch basin project in Dover, Vermont. Chris was extremely diligent about his work and demonstrated not only an expert level of understanding in civil engineering, but a high degree of ethics while performing his duties. Chris was very easy to talk with and communicated well with construction workers, the design engineer and the municipal workers. Chris was onsite continuously and made effective suggestions for changes that improved the original design. Chris tracked hours during the construction and ensured that workers were getting paid appropriately based on the standards dictated by the Federal grant that funded the project. I would highly recommend Chris for the role of resident engineer and would use him again as the need occurs.*

*Ken Black - Director, Economic Development  
Town of Dover, VT*

*Client: Town of Dover, VT - Ken Black, Economic Development Dir. - [Dovereds@dover.net](mailto:Dovereds@dover.net)/802-464-5100*

### Historic Covered Bridge Rehab/Bridge Street Enhancement-Waitsfield, VT



In 2015, JTC was selected to provide Resident Engineering oversight for this VTrans LTF funded project representing the Town of Waitsfield, VT. Specifically, the project involved the partial removal of the existing timber covered bridge and replacement with a new prefabricated steel multimodal cantilevered structure allowing for both pedestrian and bicycle use simultaneously. Several damaged concrete abutments and a retaining wall structure were replaced and/or repaired with poured in-place reinforced concrete. New poured in-place reinforced

concrete wingwalls were also added to eliminate erosive forces of the Mad River along exposed stream bank slopes. Approaches on Bridge Street were reconstructed with new concrete sidewalks, granite curbs, sub-base gravel, pavement, drainage inlets, ADA compliant access ramps, upgraded street marking, and signage. Upgraded underground stormwater collection piping was installed with a new outfall structure and permanent outfall protection measures.

JTC's scope of work included: oversight and documentation of contractor's work; providing daily reports; review contractor payment requests; verify quantities; attend all regularly scheduled site meetings; prepare contractor payment requests; issue a Certification of Completeness; inspect and approve all construction activities; monitor erosion control; review and verify traffic control; provide materials testing as needed for all concrete, soils, and steel work; and provide as-built plans.

*My experience in working with John Turner Consulting, Inc. has been very positive. Notably, Chris Kaufman, as the onsite Resident Engineer has been a significant asset to the project. I have been impressed with his professionalism, engineering support, responsiveness, and problem-solving skills throughout the Covered Bridge Rehabilitation/Bridge Street Enhancement project. In multiple instances, Chris discovered project engineering omissions and errors that were resolved to eliminate cost overruns and maintain the project schedule.*

*Valerie Capels, Town Administrator  
Waitsfield, Vermont*

*Client: Town of Waitsfield, VT - Valerie Capels, Town Administrator - (802) 496-2218/[townadmin@madriver.com](mailto:townadmin@madriver.com)*

### Multi-Modal Connection Project Browns Trace Road Sidewalk –Jericho, VT

In 2015, JTC was selected for the Construction Inspection Services of the Jericho Multimodal Connection Project. Construction included a concrete sidewalk, concrete catch basins, retaining wall, cedar 3-rail fence and other related items for a pedestrian improvement project. During the project, JTC was on the site daily, as needed, to properly monitor site conditions; maintain communications; prepare daily reports; document site activities; track project quantities; and verify materials, quantities, correct placement, workmanship, protection, site safety procedures, environmental controls, and other pertinent issues. Among the issues that the Construction Inspector was responsible for from day to day was assuring that the contractor and their sub-contractors were following all the construction contract requirements and that all permits were in place. Any deviations from these documents was immediately reported to the Jericho Road Foreman and/or other designated Town officials either verbally or in the daily reports that were issued. JTC inspected staging area(s), materials approvals and storage locations for compliance with applicable approval standards and monitored erosion control on an ongoing basis to assure that it complied with permits.

JTC reviewed all final calculations and all other pertinent documents and issued a Certificate of Completion. This certified to the Town that the project was constructed as designed, in conformance with the project specifications, subject to appropriate revisions during construction, and required contract provisions. Our Resident Engineer was also responsible for red lining drawings as work was completed.

*Client: Town of Jericho, VT - Todd Odit, MPM - 802-899-9970 ext.3/[todit@jerichovt.gov](mailto:todit@jerichovt.gov)*

### Safe Schools Sidewalk Project – Town of Saxtons River, VT

In 2015, JTC provided Resident Inspection and Project Management oversight for the development of safe sidewalks for school children and local pedestrians in the Town of Saxtons River. The project included excavation/backfill, drainage controls, sidewalks, street curbing, street signs, pedestrian street markings, relocation of a baseball backstop, tree trimming, and erosion control measures. During the project, JTC was on the regularly to properly monitor site conditions; maintain communications; prepare daily reports; document site activities; track project quantities; and verify materials, quantities, review site workmanship, and oversee site safety procedures. The JTC resident engineer regularly communicated with the Municipal Project Manager (MPM) and the Highway Superintendent.

A final punch list was developed following an inspection to confirm that the contractor had achieved substantial completion. The “punch list” was monitored and updated until the items were found to be complete. JTC reviewed all final calculations and all other pertinent contract documents to issue a Certificate of Completion. This certified to the Town that the project was constructed as designed, in conformance with the project specifications. Our Resident Engineer provided a red line as-built drawing upon completion of the project.

*Client: Town of Rockingham, VT - Willis D. “Chip” Stearns II - 802-463-3964 x104/[manager@rockbf.org](mailto:manager@rockbf.org)*

City Center Project – City of Rutland, VT - In 2016, JTC was contracted by the City of Rutland, Vermont to provide Resident Engineering and engineering oversight for roadway, sidewalk, utility, and streetscape improvements for the construction of the Center Street Marketplace. The Project will be constructed in the Spring of 2017 and is the result of the rehabilitation of the area known as “Center Street Alley.” This project is funded by an





earmark from Senator Patrick Leahy and grant is administered by the Rutland Redevelopment Authority. The project will consist of excavation/fill, re-establishment of new subgrade, upgrade and relocation of utilities, new pavement, lighting, stormwater upgrades, benches, decorative gates and fences, fountain and other amenities. JTC will perform onsite inspections; prepare daily reports; document site activities; track project quantities; verify materials; and provide contract management functions such as evaluation of subcontractors, contractor invoice review, maintenance of contract files, federal-aid DBE compliance, safety reviews, development of change orders, and project schedule reviews. In addition, JTC will conduct survey verification, as-built documentation, and project closeout.

Contact: City of Rutland, VT - Cindi Wight, CPRE, MR - 802-773-1822 ext. 15/[cindiw@rutlandrec.com](mailto:cindiw@rutlandrec.com)

### Construction Management, Construction Inspection- City of Providence, RI



From 2013-2016, JTC was awarded five Construction Management/*Construction Inspection* contracts with construction costs totaling over \$10,000,000 with the City of Providence Public Works Department. Project Management responsibilities included: daily reporting; review of all material testing reports to make certain all materials met design specifications; contractor compliance with Minority Business Enterprise/Disadvantaged Business Enterprise (MBE/DBE) requirements;

verification of contractor fair wage rates utilized by the City of Providence; biweekly meetings with contractor, utility companies, owner's representative, and DPW staff; review of required First Source Labor Union utilization rates; shop drawing approvals, review of all contractor pay requests; budget development and tracking; schedule and forecasting reviews; pre-approval of all change orders; and digitally managed project site documentation on the Owner Representative's Project Share Site.



Client: City of Providence, RI - Natale Urso, Deputy City Engineer - 401-467-7950/[nurso@providenceri.com](mailto:nurso@providenceri.com)

**Contract 4 - Reconstruct 27 streets as part of the overall \$40M Roadway Improvement Program**  
Cost of construction for Contract 4 was \$3.5M and included; full depth reclamation, street leveling, concrete base repair, mill and overlay, concrete sidewalks, 300 concrete ADA ramps, installation of new & used curbing, drainage improvements, sewer lining and repairs, and inclusion of new way finding sign placement. Responsibilities included; inspection of all facets of construction, documentation, resident notification, pre-construction videos, photo logs, SWPP reporting, quantity verification, scheduling material testing, and meeting representation.

### **Contracts 2, 4, 7, 9 and 11 and Downtown Circulator Project**

JTC provided Project Management oversight and Resident Inspection for these contracts with a total construction value of more than \$12M. Responsibilities included; representation at contractor meetings, coordination of construction activities between the contractor and adjacent utility construction projects, review of all project documentation prior to uploading to the Project Share Site, MBE/DBE review for compliance, First Source Apprentice review for compliance, pay requisition review and approval, shop drawing review and approval, budget projections, and acting as intermediary between contractor and City of Providence.





Scope of Work and Tasks Involved in the projects mentioned above include: Inspection of construction related items including removal and resetting curb, the construction of over 300 ADA handicap ramps, concrete and asphalt sidewalks, concrete and asphalt driveway aprons, full depth reclaim of roadways, trim and fine grade of reclaimed roads, micro-milling of roadways, installation of traffic cameras, traffic loops, concrete base repair, HMA placement of leveling course, placement of binder course, and top course placement, drainage structure repairs and replacement, sewer line and lateral repairs, water main and lateral construction and repair, clearing and grubbing, loam and seeding, street way finding sign installation, speed bump and signage construction, and adjustment of all structures prior to paving.



Our other responsibilities included: reviewing design plans and city and state DOT specifications, providing residents of the city with updated work schedule notifications, working with the local residents to alleviate concerns to businesses and residents, videotaping the entire project prior to construction, representation at progress meetings with the contractor, daily documentation of equipment and personnel, accurate and certification of material quantities, tracking change orders, reviewing traffic control, flagger utilization, police detail utilization and tracking, chairing pavement meetings with DPW and contractor, reviewing pay requisition applications by the contractor to assure quantities are accurately billed, creating punch list items necessary to be completed prior to payment of contractor's pay request, scheduling material testing, and assisting with project closeout documentation for each assigned project.

*"This year's road paving program was set on a very aggressive schedule and your firm met all the challenges from addressing construction and design issues, to providing additional staff."*

Natale Urso, Deputy City Engineer  
Providence, Rhode Island

*JTC has provide \$1.75M in construction oversight over the past 4 years for these projects in Providence, RI.*

MaineDOT - Multimodal Program: Highway Inspection, Construction Management and Support Services - In 2010, JTC was awarded a \$1.75 Million 3-year GCA Contract for providing professional services for the Multimodal Program including; highway inspections, rail inspections, Construction Management Support and Building Inspections for the Maine Department of Transportation. In 2015, JTC was awarded a \$6,150,000 GCA 3.5-year Term Contract for Construction Management and Resident Inspections for Highway and Multi-Modal Projects.



Responsibilities included:

*Highway inspection:* Design support, administration services and construction management of any highway segment or section, rail &/or building projects. *Fabrication inspection:* Production inspection precast concrete facilities to verify conformance with requirements; requiring inspectors to be qualified in accordance with the specifications. *Bridge inspection:* Construction inspection of highway bridge, suspension and complex bridge, railroad bridge and other transportation structures including use of nondestructive testing, existing condition load ratings, related support services and document development. *JTC has provided CM/Highway Inspection services on more than 85 projects since 2011.*

*Client: MaineDOT - LaRay L. Hamilton, P.E. - Project Manager, Region 1 - 207- 592-1367/[laray.hamilton@maine.gov](mailto:laray.hamilton@maine.gov)*

## State Office Complex – Waterbury, VT



JTC was contracted as the Special Inspections and Testing Agent to provide inspections and construction materials testing for the \$175 million dollar Waterbury State Office Complex renovation and new construction project.

This project was the result of a major planning effort for the rebirth of the complex as Class A office space for the Agency of Human Services. The master plan included deconstruction of over twenty buildings in the Winooski River flood plain,

restoration/major renovation of the remaining historic buildings, construction of a new office building and a new central plant, dry flood proofing of all buildings to above the 500- year flood level, and construction of almost all new site infrastructure elements. The project has been registered with USGBC and was designed to achieve LEED GOLD rating.

Client: Peter G. Hack – Dept. of Buildings and General Services  
– 802-828-3414/[peter.hack@state.vermont.us](mailto:peter.hack@state.vermont.us)

*“Their site representatives have been a great asset to our project and have handled a multitude of daily inspection and testing tasks for soils, asphalt, rebar, concrete, masonry, grout and fireproofing. JTC has always gone above and beyond in servicing this project and we have been very satisfied with the entire JTC team.”*

Peter G. Hack, State of Vermont  
Dept. of Bldgs. and General Services

## Charles Street Water Main Replacement and Road Reconstruction -Milton, NH

JTC was hired for full-time Resident Inspections and on-call Materials Testing Services for this \$1 million replacement of the Charles Street water main and road reconstruction project. The project consisted of replacing 4500 lf of 8” Ductile Iron Water Main, and removing 5 existing hydrants and installing 2 new hydrants. This included connecting water services to the new water main. The work was coordinated with NHDOT field engineers and staff. The project also included repaving the entire length of Charles Street as well as the effected side streets.

Our Resident Inspector’s responsibilities included attending all project meetings with the design engineer, Milton Water Works, Town of Milton, Contractor, local residents and NH State employees. Our Resident Engineer verified all work was in accordance with project plans and specifications. This included maintaining a field book of all daily activities with documentation of contractor personnel, equipment, material deliveries and visitors to the site. Our inspector maintained a photo log throughout the entire construction project. Our inspector verified all erosion control measures were in-place prior to construction and throughout the project. A record of material quantities were documented and certified for compliance. Buy America provisions were verified with all steel submittals to the project. Contractor employee interviews were conducted onsite and pay documentation maintained to verify compliance with Davis Bacon requirements. JTC developed and maintained all project closeout documentation. JTC also reviewed all contractor claims against project documents and submitted written opinions to client. This project was audited by an independent consultant hired by the Federal Government in the fall of 2011. Our inspector was praised for the thoroughness of the documentation and his ability to provide all documents on short notice to the auditor.

### Newburyport Drainage and Sidewalk Reconstruction – Newburyport, MA

JTC was hired for full-time Resident Inspections for this \$2 million replacement of the Water Street drainage and sidewalk construction project. The project consisted of replacing 12,500 lf of drainage at several locations in Newburyport, MA. This project also included redirecting a drainage line under an existing culvert crossing to relieve ongoing freeze thaw issues. Our Resident Inspector's responsibilities included ensuring the drain line was installed at the correct location at each station. He ensured that all drain lines and sidewalks were constructed in accordance with project documents. Each crossing was achieved with the use of a horizontal drilling rig. Our inspector maintained a field book tracking all contractor personnel, equipment, materials deliveries, quantities, visitors and all deliveries. He also maintained a photographic log of activities and red-lined drawings for as-builts. Our inspector provided a daily field report of all activities.

### Colonial Acres/Pigeon Drive/Brainard Road, Water Main Replacement - Wilbraham, MA

JTC was hired for full-time Resident Inspections for this \$1.2 million replacement of the Colonial Acres water main, a 120 resident subdivision along several side streets. Other locations under the same contract included Pigeon Drive, and Brainard Road. The entire water system was also replaced to several other commercial and residential units. Our Resident Inspector's responsibilities included providing oversight for the installation of water mains and appurtenances for nine separate streets; approximately 8,000 L.F. of 8" ductile iron. This included temporary and permanent water mains, gates, testing, services, paving, and restoration. This project also included asbestos abatement compliance guidelines to follow. Project responsibilities also included tracking and organizing daily contract quantities, completing pay requisitions, completing record AutoCad as-built in field drawings, verifying contractor adherence to contract specification and schedule, coordinating police details, and communicating with city officials and local residents to handle all issues, comments, and complaints.

### US Route 1 Water Main Relocation – Hampton, NH

JTC was contracted by Stantec for this project oversight. This project was interesting because it involved relocating the existing water main, many areas crossing Route 1, so that it would be out of the way when the State came in the following year to install their new drainage lines. Thus, ability to decipher plans and profiles was critical. Mr. Turner oversaw the crews which at some points of the contract included 3 crews working simultaneously along busy Route 1. He kept track of quantities, including all officer hours, and ensured project was constructed in accordance with the plans. JTC RPR assisted with all project closeout documentation. JTC RPR also reviewed all contractor claims against project documents and submitted written opinion to client.

*Client for the 3 projects listed above: Stantec, Rene LaBranche, 603-669-8672 /Email: [rene.labranche@stantec.com](mailto:rene.labranche@stantec.com)*

### DiBernardo & Associates - Relevant Projects and Client References:

Project Name: Town of Brattleboro, VT

Services: Collect data utilizing GPS with sub-millimeter precision of the Municipal Wastewater Treatment Facility for Engineering Design; Prepare plan showing results of data collected compatible with GIS software.

Project Name: Town of Brattleboro, VT

Services: Layout new West Brattleboro Fire Station for construction crew. Coordinated with project manager and construction foreman to supply crew with new layout.

Project Name: Town of Brattleboro, VT

Services: Layout new addition for Brattleboro Central Fire Station for construction crew. Coordinated with project manager and construction foreman to supply crew with new layout.

*Client: Steven Horton [shorton@usa.com](mailto:shorton@usa.com) /603.313.9333.*



Project Name: City of South Burlington, VT

Services: Collect Data utilizing GPS and Conventional Robotics Total Station methods to prepare a Topographic Plan for stormwater design. Coordinate directly with City Engineer and Design Engineering firm

Project Name: City of South Burlington, VT

Services: Collect data utilizing GPS and conventional Total Station methods of the City of South Burlington Town Office and Fire Station and the City of South Burlington Public Works property to be utilized for Engineering Design; Prepare plan showing results of data collected compatible with GIS software.

Project Name: City of South Burlington, VT

Services: Collect data utilizing GPS and conventional Total Stations methods for the Mayfair Park Subdivision to be utilized in Engineering design; Prepare plan showing Existing Conditions.

Project Name: City of South Burlington, VT

Services: Collect data utilizing GPS and conventional Total Station methods for the City's Department of Public Works facility for use in Engineering Design. Services included Topographic Survey and some Boundary Analysis.

Client: Hoyle Tanner & Associates, Mike Schramm [mschramm@hoyletanner.com](mailto:mschramm@hoyletanner.com)/802.860.1331

### 3. KEY PERSONNEL

This written section highlights our Key Personnel in charge of specific key tasks. Full resumes of all personnel are included in Section D– Resumes

John Turner – Principal-in-Charge - John Turner is the President of John Turner Consulting and has 23 years of relevant experience. John is the Principal-in-Charge and will be your point of contact for all contractual issues. Mr. Turner is responsible for all operations and quality of services for JTC with more than 80+ professionals throughout New England. John has the following relevant certifications: NETTCP QA Technologist, NETTCP HMA Field Inspector and Local Project Administrator. John has provided contractor claims reviews and assisted with project closeout documentation on numerous projects including the Charles Street Water Main and the 1.3 Million square foot parking lot and access drives for the Loop Mall in Methuen, MA (ongoing).

Chris Kaufman, CPESC – Program Manager/Resident Engineer - Chris has nearly 30 years of experience as a project engineer and construction manager for civil engineering projects including road, bridge, airport, and heavy construction. He has extensive experience in project management, environmental engineering, construction management, and contract development. Chris has been managing our Vermont Resident Engineering Program since 2014. He has worked on numerous VTrans LTF projects for municipalities throughout Vermont. Prior to joining JTC, Chris had many years of experience working on VTrans transportation and federally funded highway projects including a major US Route 7 expansion project in Rutland County, a significant thoroughfare through the western portion of the State. The project involved multiple aspects of the project development process including regional planning coordination, local community input, permitting, and construction inspection. Chris also has experience with Emergency Response support for FEMA projects. Chris is a Certified Professional in Erosion and Sediment Control, has Vermont Agency of Transportation Contractor Inspection Training and is NETTCP Certified Concrete and HMA Paving Inspector and Nuclear Gauge Testing.

Robert Henson – Resident Engineer - Robert is a Senior Construction Inspector for John Turner Consulting with more than 26 years (15 with JTC) of relevant field experience. Robert (Bob) has many years of experience serving as a resident engineer overseeing utility, road reconstruction and paving projects.



Bob has been the chief inspector for JTC on more than 50 such projects. Most recently Bob has served as a level III highway inspector for or MaineDOT contract. Prior to that, Bob was our Chief Inspector overseeing many other inspectors as well as technicians for our City of Providence, RI contract.

Judson Zachar, P.E. – Resident Engineer - Mr. Zachar has widespread experience in various facets of construction engineering, including highway, bridge, buildings, dams, etc. Judson has been an inspector on many projects throughout New England including many in Boston while working for GZA.

Jason Keenum – Resident Engineer - Jason is a Resident Inspector with more than 12 years of experience. Jason is responsible for construction inspection oversight for our key state and town clients, project managers, engineers and subcontractors on highway, road and airport projects. Jason maintains expert working knowledge of blueprints, site plans and shop drawings for various building and road structures and is responsible for the creation and tracking of daily inspection reports throughout the duration of projects.

Brian Fletcher – Resident Engineer - Brian has 15 years of relative inspection experience. Brian has an Associate's Degree in Construction Management and Principles from Vermont Technical College in Randolph, VT. Brian is a construction inspector for road, utility, airport and sidewalk projects throughout Vermont. Brian is also a seasoned precast plant inspector and has performed precast/prestressed concrete inspections for NHDOT and CTDOT including SIP Panels, box Beams, Bulb T girders, box culverts, MSE wall panels, and barrier.



## D. RESUMES



John Turner is the President of John Turner Consulting and has twenty three (23) years (20 years with JTC) of relevant experience. He serves as Principal-in-Charge of most projects. He will be your point of contact for all contractual issues as well as the Quality Control Manager. Mr. Turner is responsible for all operations and quality of services for JTC with more than 80 personnel in 6 states

#### CERTIFICATIONS

- NETTCP QA Technologist
- NETTCP HMA Field Inspector
- OSHA 10-Hour
- MaineDOT LPA Certificate
- Geotechnical Engineering Seminar
- Geosynthetics Seminar
- Drilling Managers/Techniques Seminar
- PSI Geotechnical Engineer Seminar – Shallow Foundation
- PSI Geotechnical Engineer Seminar – Deep Foundation
- Nuclear Moisture-Density Gauge Operator

#### EDUCATION

B.S., Civil Engineering, May 1991,  
Rensselaer Polytechnic Institute, Troy, NY

## JOHN D. TURNER

### Principal-in-Charge/Chief Inspector

John provides project management and maintains key business relations and routinely performs geotechnical field inspections and resident inspections for utility and road projects. John has personally served as our resident engineer on more than 30 projects including water, sewer, road construction and the security upgrades project at the Army Corps of Engineers headquarters in Concord, MA.

#### Representative Project Experience:

##### MaineDOT Highway Inspection (Ongoing)

Project Manager for this 5-year term contract with the MaineDOT. This work has included the coordination of several levels of Highway Inspection personnel. JTC has provided resident engineering oversight for over 85 projects throughout the state of Maine.

##### US Route 1 Water Main Relocation – Hampton, NH

JTC was contracted by Stantec for this project oversight. This project was unique because it involved relocating the existing water main, many areas crossing Route 1, so that it would be out of the way when the State came in the following year to install their new drainage line. The ability to decipher plans and profiles was critical. John was Chief Inspector for the duration of this project overseeing the crews which at some points of the contract included 3 crews working simultaneously along busy Route 1. He kept track of quantities, including all officer hours, and ensured project was constructed in accordance with the plans. John assisted with project closeout documentation, reviewed contractor claims against project documents and submitted written opinion to client.

##### Charles St. Water Main Replacement/Road Rec.-Milton, NH

JTC was hired for full-time Resident Inspections for this \$1 million replacement of the Charles Street water main and road reconstruction project. The project consisted of replacing 4500 lf of 8" Ductile Iron Water Main, and removing 5 existing hydrants and installing 2 new hydrants. The project also included tying in all water services to the new main. This also included crossing Route 125 which is a state road. That portion of the work was coordinated with NHDOT field engineer. The project included repaving Charles Street as well as the effected side streets. John was the Chief inspector and his responsibilities included attending all project meetings with Stantec's Project Manager, Milton Water Works, Town of Milton, Contractor, Residents and State employees. John monitored that all work was in accordance with project plans and specifications. This included maintaining a field book of all daily activities including contractor personnel, equipment, material deliveries and visitors to the site. John also took preconstruction photos of the entire limits of work and maintained a photo log throughout construction. John verified all erosion control measures were in-place prior to construction and verified they were still working throughout the project duration. Our inspector maintained a log of quantities for all materials utilized on this project. Since this was a federally funded project he also verified all materials had American made certifications. Our inspector took ties to all buried fittings, services, hydrants, etc. In addition, since this was a federally funded project our inspector took photos of required signs and postings for future reference. He also performed contractor employee interviews and maintained documentation verifying employees were being classified and paid in accordance with project requirements. John assisted with all project closeout documentation. John also reviewed all contractor claim against project documents and submitted written opinion to client. This project was audited by an independent consultant hired by the Federal Government in the fall of 2011. John was praised for the thoroughness of the documentation and his ability to provide all documents on short notice to the auditor.



Chris has more than twenty (25) years of experience (4 years with JTC) as a project engineer and construction manager for civil engineering projects including road, bridge, airport, and heavy construction. Chris has extensive experience in project management, construction management, environmental engineering, construction management, permitting, and contract development.

#### EDUCATION

Bachelor of Science, Geological Engineering, Missouri University of Science and Technology  
Masters Studies, Environmental Engineering, Kansas University

#### LICENSES AND CERTIFICATIONS

- Licensed Vermont Engineer (pending Fall 2016 exam)
- Certified Professional in Sediment and Erosion Control, #00008016
- NETTCP Certified Concrete and Asphalt Inspector and Nuclear Gauge Testing
- Vermont Agency of Transportation Contractor Inspection Training
- Sediment Capping and Dredging Operations Seminar
- Endangered Species Act Review and Regulatory Program Impacts Seminar
- Chlorinated Solvent Contamination and Treatment Program
- On-Scene Incident Command Training
- USEPA On-Scene Coordinator Readiness Training Program
- 8-Hour Refresher Course, Hazardous Waste Site Operations
- 40-Hour Incident Command System Series Course
- United States Coast Guard Crisis Management Awareness Training
- Hazardous Material Transportation Accident Seminar
- CPR Training and Basic First Aid
- Department of Transportation Hazardous Materials Course
- Excavation and Trenching Competent Person Course
- 40-Hour Hazardous Waste Site Operations Training Course

## CHRIS KAUFMAN, CPESC

Program Manager/Senior Resident Engineer

Representative Project Experience:

Rutland City Center Project – Rutland, VT – Resident Engineering Manager providing project management and engineering oversight for roadway, sidewalk, and streetscape improvements for the construction of the Center Street Marketplace. The Project will be the result of the rehabilitation of the area known as “Center Street Alley.” This project is funded by an earmark from Senator Patrick Leahy and grant is administered by the Rutland Redevelopment Authority. The project consists of excavation/fill, re-establishment of new subgrade, upgrade and relocation of utilities, new pavement, lighting, stormwater upgrades, benches, decorative gates and fences, fountain and other amenities.

Valley Trail Project Segment A – Dover, VT – Performed project management and construction management duties for a roadway, sidewalk, and streetscape improvements for the length of approximately 2,086 feet along Route 100 in West Dover, Vermont. The project included approximately 1,925 linear of concrete sidewalks, 1,300 linear feet granite curbing, 1,200 linear feet drainage piping, 12 catch basins, bituminous asphalt paving, sub-base preparation, guardrail reset and replacement, pavement markings, detectable warning surfaces, crosswalk enhancements, road signs, electrical conduit, and 21 street lights.

VTrans State Route 7 Construction – Brandon to Pittsford, VT – Resident and environmental engineering inspection services for the construction of 2.5 miles of State Route 7 in Brandon, Vermont. Services included: environmental permit review, development of wetland impact assessments, and storm water and drainage inspections. Onsite inspection services included: survey verification, roadway reconstruction, drilling and blasting ledge, storm water culvert construction, intersection reconstruction, precast concrete culverts, hot mix asphalt placement, signage placement, and pavement markings.

VTrans State Route 7 Intersection and Bridge Reconstruction – Rutland, VT – Resident engineer for the construction of a new poured in place concrete overpass and reconstruction of an intersection in Rutland Township, Vermont. Services included: earthwork construction oversight, survey verification, roadway reconstruction, concrete inspection and testing, storm water culvert construction, intersection reconstruction, hot mix asphalt placement, signage placement, and pavement markings.

Covered Bridge Reconstruction and Storm Water Project, - Town of Waitsfield, VT– Work performed under this project included rehabilitation of the Village Covered Bridge, installation of a new steel pedestrian bridge, concrete abutment repairs and widening, construction of a new concrete retaining wall, installation of guard rail, reconstruction of the Bridge Street pavement, construction of concrete sidewalks, installation of granite curbing, drainage improvements, and incidental items.

10/18/2018: Chris Kaufman no longer works for the firm .  
Richard Seymour is now Program Manager. See Resumes Section.



Robert is a Senior Resident Engineer for John Turner Consulting with more than 25 years (15 years with JTC) of relevant field experience. Robert (Bob) performs Resident Construction Inspection services, environmental site assessments, project management and construction monitoring. Bob has many years of experience serving as a resident engineer overseeing utility, road reconstruction and paving projects.

## ROBERT HENSON, II

Senior Resident Engineer

Project Experience:

*Bob has served as our Resident Engineer for more than 50 city/town full depth road and utility contracts throughout New England.*

City of Providence, Rhode Island Construction Management, Resident Inspection 2011-2015

Bob Henson served as JTC's Chief Inspector for this several projects including the \$40M City of Providence Roadway Improvement Program. In 2013 Bob was in charge of inspection services on Contract 2 which included 29 streets with a construction budget of over 3.5 million dollars. In 2014 he is responsible for Contract 11 which includes 28 streets with a construction budget of just over 3 million dollars.

### EDUCATION

University System of New Hampshire,  
Bachelor of Science, January, 2002

Inspection of construction related items include, remove and resetting curb, the construction of over 300 ADA handicap ramps, concrete and asphalt sidewalks, concrete and asphalt driveway aprons, full depth reclaim of roadways, trim and fine grade of reclaimed roads, micro-milling of roadways, installation of traffic cameras, traffic loops, concrete base repair, HMA placement of leveling course, placement of binder course, and top course placement, drainage structure repairs and replacement, sewer line and lateral repairs, water main and lateral construction and repair, clearing and grubbing, loam and seeding, street way finding sign installation, speed bump and signage construction, and adjustment of all structures prior to paving.

### CERTIFICATIONS

- Troxler Nuclear Density Gauge
- American Concrete Institute Field Testing Technician Level 1
- North East Transportation Training & Certification Soils & Aggregate & Concrete Inspector – expired
- North East Transportation Training & Certification HMA Paving
- OSHA 40 Hour Hazardous Waste Training

MaineDOT Level III Resident Engineer

Multi-PIN Project Contract Number 2015071600000000075 Construction Inspection services for:

Project WIN & Specific Location: 22566.00 West Paris-Sumner-Hartford; 22568.00 Hartford; 22570.00

Hartford-Turner; 20359.00 Wilton-Farmington; 22565.00 Carthage-Dixfield-Wilton; 18986.00 Farmington;

20345.00 Albany Twp; 17882.00 Jay; 20369.00 Farmington; 18987.00 Farmington; 12775.00 Roxbury-Byron;

- 22066.00 Paris-Buckfield; 22064.00 Hanover-Rumford; 22068.00 Buckfield-Turner; ADDING WINS: 18285.00

MaineDOT Construction Management, Level 3 Inspection, West Paris-Turner PIN# 22566.00 and Moscow-Caratunk, ME PIN# 18285.00 in 2016.

Bob Henson was JTC's Level 3 Inspector for the Maine Department of Transportation. In 2016 Bob was a Level 3 inspector on MDOT Project 22566.00 and 18285.00 2 which included 25 miles of state highways with a construction budget of over 10 million dollars. Inspection of construction related items include, remove and resetting curb, asphalt sidewalks, asphalt driveway aprons, full depth reclaim of roadways, trim and fine grade of reclaimed roads, micro-milling of roadways, HMA placement of leveling course, placement of binder course, and top course placement, drainage structure repairs and replacement, sewer line and lateral repairs, water main and lateral construction and repair, clearing and grubbing, loam and seeding, street way finding sign installation, signage construction, and adjustment of all structures prior to paving.



Detail-oriented Project  
Manager/Senior Geotechnical  
Engineer with strong educational  
background in Geotechnical  
Engineering, supported by field  
experience and professional work  
experience in construction.  
Judson has 19 years (5 years with  
JTC) of experience with project  
management and geotechnical  
engineering.

#### CERTIFICATIONS

- Professional Engineer in:
  - VT (#018.0110154)
  - MA (#48177)
  - NH (#14570)
  - ME (#13772)
  - CT (#30349)
  - NY (#089605)

#### EDUCATION

Bachelor of Science in Civil  
Engineering, 1997, Union College -  
Schenectady, NY

#### AFFILIATIONS

- American Society of Civil  
Engineers (ASCE)
- National Society of  
Professional Engineers  
(NSPE)
- NCEES Member
- Boston Society of Civil  
Engineers

#### CERTIFICATIONS

- Nuclear Moisture/Density  
Meter Licensed Operator,  
2000
- NETTCP Inspector

## JUDSON ZACHAR, PE

Senior Engineer

Mr. Zachar has widespread experience in various facets of geotechnical engineering, including on-site directing of subsurface drilling explorations, various soil/bedrock sampling and drilling procedures, instrumentation design, installation, monitoring and data reporting, subgrade inspection, settlement analyses and laboratory testing

Additionally, Mr. Zachar has extensive experience associated with the construction portion of projects ranging from building foundation calculations, evaluations, and design to earthwork operations and on-site QA/QC.

#### Specialized Skill Areas:

- Geotechnical Investigations
- Building Foundation Calculations, Evaluation, & Design
- Settlement Analyses, Pre-Load/Surcharge Programs, Geotechnical Instrumentation and Monitoring
- Slope Stability Analyses
- Landfill/Low-Permeability Cover Systems
- Temporary Excavation Support
- Mechanically Stabilized Earth Walls/Reinforced Soil Slopes
- Geotechnical Laboratory Testing
- Construction Monitoring and Quality Assurance/Quality Control Testing

#### Representative Project Experience:

Special Inspections and Geotechnical Programs-  
Cumberland Farms throughout New England and New  
York. Mr. Zachar conducted subgrade inspections, special  
inspections, and geotechnical investigation programs on  
various Cumberland Farm projects throughout the northeast.

Retail and Car Dealership Developments – Vermont and  
Massachusetts. Coordinated and executed the drilling  
operations and fulfilled the client's needs with subgrade and  
special inspections during the entire construction phase. Sites  
include building(s) construction, and associated asphalt and  
sidewalk construction.

Newport State Airport – Newport, VT. Developed,  
coordinated, and executed the geotechnical exploration  
evaluation program for the reconstruction of taxiways at the  
NSA.



Jason is a Resident Inspector with more than 10 years (5 years with JTC) of experience. Jason is responsible for Quality Control of building materials working with building inspectors, project managers, engineers and subcontractors on commercial job sites. Jason maintains expert working knowledge of blueprints, site plans and shop drawings for various building and road structures and is responsible for the creation and tracking of daily inspection reports throughout the duration of projects.

#### LICENSES AND CERTIFICATIONS

- PCI level I and II
- NETTCP Soil and Aggregate Inspector
- NETTCP HMA Paving Inspector
- NETTCP Concrete Technician
- NETTCP Driven Pile Certification
- Quality Control Personnel Certification Level I
- Certification of Nuclear Moisture/Density Equipment – Q/C Training Course
- ACI Concrete Field Testing Technician Grade I
- Spray Applied Fireproofing Special Inspector Certification
- Masonry Inspector Certification
- OSHA 10-Hour Construction Safety and Health

## JASON KEENUM

Resident Inspector

Representative Project Experience:

Waterbury State Office Complex – Waterbury, Vermont  
Lead Inspector for the restoration/major renovation of the remaining historic buildings, construction of a new office building and a new central plant, dry flood proofing of all buildings to above the 500 year flood level, and construction of almost all new site infrastructure elements. The construction cost estimate is \$175M.

UVM STEM, Dining Hall and Central Plant Chiller

Lead Inspector for the Science, Technology, Engineering and Mathematics (STEM), First Year Residence Hall and Dining Facility (FYRH) and Central Plant Chiller Expansion (CPCE) projects.

Burlington International Airport – South Burlington, Vermont  
JTC's onsite project manager

- Reconstruction of Caro Apron Phase I
- Reconstruction of a portion of Taxiway B – FAA Quality Assurance Testing

Jay Peak

- Project oversight for numerous condominium projects and a hotel construction
- Testing and inspection of soils, concrete, reinforcing steel, pavement, fireproofing
- Oversight of road work and water/sewer installation

Town of Sharon, VT Route 132 Repairs

Roxbury, Vermont – Bull Run Road and Steele Hill Road Recovery

Brattleboro Design-Build I-91 Bridges 8 North & South and 9 North & South

Responsible for Testing Quality Control for the I-91 Bridges to adhere to VAOT 2011 Standard Specifications, VAOT Material Sampling Manual, and the VAOT Construction Manual.

I91 Windsor, Vermont Bridge Project : Project Cost: \$20,624,561

#### Parking Garage Experience

SawTooth Parking Garage Claremont NH (new building)

Soils inspection with lab work and placement

Rebar inspections

Concrete inspections field and plant

Hours on site – continuously over 6 months

Lowell MA I495 Over pass - Bridge Work - 15hour shift 6 days a week for 4 months. Responsible for the overall inspection of the project.





Brian is a construction inspector with 10 years (3 years with JTC) of experience. Brian's experience includes overseeing road and sidewalk projects including those governed by Vtrans requirements. Brian is also responsible for Quality Control of building materials working with building inspectors, project managers, engineers and subcontractors on commercial job sites. Jason maintains expert working knowledge of blueprints, site plans and shop drawings for various building and road structures and is responsible for the creation and tracking of daily inspection reports throughout the duration of projects.

#### EDUCATION

Associates Degree in Construction Management and Principles, Vermont Technical College, Randolph, VT

#### LICENSES AND CERTIFICATIONS

- NETTCP HMA Field Inspector
- NETTCP Concrete Inspector
- NETTCP Soil and Aggregate Inspector
- ACI Concrete Field Inspector
- Troxler Certified
- PCI Level I / II

## BRIAN FLETCHER

Resident Inspector

#### Relevant Experience:

Town of Rockingham, Vermont Safe Schools Project  
Inspection for the development of safe sidewalks for school children and local pedestrians in the Town of Saxtons River. The project included excavation/backfill, drainage controls, sidewalks, street curbing, street signs, pedestrian street markings, and erosion control measures.

#### Waterbury State Office Complex – Waterbury, Vermont

Inspector JTC for the QC testing for this major renovation project. The project involves the deconstruction of over twenty buildings in the Winooski River flood plain, restoration/ major renovation of the remaining historic buildings, construction of a new office building and a new central plant, dry flood proofing of all buildings to above the 500 year flood level, and construction of almost all new site infrastructure elements. The current total construction cost estimate is \$175M.

#### UVM STEM, Dining Hall and Central Plant Chiller

Special Inspection for the Science, Technology, Engineering and Mathematics (STEM), First Year Residence Hall and Dining Facility (FYRH) and Central Plant Chiller Expansion (CPCE) projects.

#### Projects (QC)

Cardigan Mountain School Dormitory

Newport State Airport, Vermont

Williams College Residence Hall 2 – Williamstown, MA

New Hampshire Dept. of Environmental Services - Seaver Reservoir

Glencliff Hyro Dam

Cannon Mountain Pump Station

Milton, VT I-89 Bridge.



Michael is responsible for performing special inspections for concrete, reinforcing steel, post tension concrete, pile monitoring, wood Framing / truss inspections, masonry, Firestop Inspections and Spray Applied Fireproofing for building and bridge construction, as well as, building envelope inspections. Michael has more than 27 years (10 years with JTC) of experience with QA/QC and special inspections and project management of large construction projects.

#### EDUCATION

Carpenters Local 547 Apprenticeship 4-year Program - San Diego, CA 1990-1994

#### CERTIFICATIONS

- OSHA 10 Hour Safety Course
- International Code Council: Reinforced Concrete Special Inspector
- International Code Council: Pre-stress Concrete Special Inspector
- International Code Council: Structural Masonry Special Inspector
- International Code Council: Spray Applied Fireproofing Special Inspector
- STI Level 1 & 2 Firestop Inspector
- American Concrete Institute Concrete Field Testing Technician Grade I
- Hilti & 3M Firestop Education Seminar

## MICHAEL VANTRAN

Senior Inspector

#### Representative Project Experience:

Waterbury State Office Complex – Waterbury, Vermont  
Special Inspector for the inspections for this major renovation project. The project involves the deconstruction of over twenty buildings in the Winooski River flood plain, restoration/ major renovation of the remaining historic buildings, construction of a new office building and a new central plant, dry flood proofing of all buildings to above the 500 year flood level, and construction of almost all new site infrastructure elements. The current total construction cost estimate is \$175M.

UVM STEM, Dining Hall and Central Plant Chiller  
Special Inspection for the Science, Technology, Engineering and Mathematics (STEM), First Year Residence Hall and Dining Facility (FYRH) and Central Plant Chiller Expansion (CPCE) projects.

Deerfield Valley Bus Maintenance Facility – Wilmington, Vermont  
Testing and special inspections for the new Deerfield Bus Maintenance Facility in Wilmington, Vermont. The scope of work included structural testing and inspection and quality assurance to verify compliance with required specifications.

Maine DOT General Consultant Agreement (2015-2018)  
In 2015 JTC was awarded a \$6,150,000, 3-year contract for providing construction support services for highway, multimodal and maintenance and operations facilities throughout the state of Maine for the Maine Department of Transportation.

The money allocated for each program is as follows:

\$4,000,000 – Highway  
\$1,000,000 – Multimodal  
\$1,150,000 – Maintenance and Operations

Leominster Community Rail Parking Facility (MART) – North Leominster, Massachusetts

Quality assurance inspection and testing for the construction of the North Leominster Commuter Rail Parking Facility. Work included performing field, fabrication plant and laboratory testing in accordance with the program of structural tests and inspections.

The quality assurance inspection and testing requirements included HMA paving, concrete, steel, welding, masonry, miscellaneous metals and earthwork

Nate is a Senior Field and Laboratory Technician with JTC with 9 years (all 9 years with JTC) of experience. Nate performs field and plant testing services including soils, concrete, asphalt and rebar for projects throughout New England.

#### CERTIFICATIONS

- Troxler Nuclear Density Gauge Operator
- NETTCP Soils & Aggregate Field Inspector
- NETTCP Concrete & Aggregate Technician
- NETTCP HMA Plant Technician
- NETTCP HMA Paving Inspector
- American Concrete Institute Concrete Field Testing Technician
- American Concrete Institute Concrete Laboratory Testing Technician

## NATE CUTTER

Senior Field and Laboratory Technician

Representative Project Experience:

City of Providence, RI Resident Inspection 2013-2014 Contract 4

Nate Cutter was brought into the City of Providence Roadway Improvement Program as a second Resident Inspector for Contract 4 as this 37 street and 3.2 million dollar contract was accelerated from a 2 year project to a 7 month project.

Maine Department of Transportation

\$1.75 Million RE Oversight multi-year contract:

Nate Cutter has served as a RE for 12 Maine DOT projects since 2010. Following is a brief list of these projects:

MaineDOT – Kennebunk, ME

Class II Inspector – Responsible for inspection for a full reconstruction of 1 mile of Rte 35. This project also included 1 mile of  $\frac{3}{4}$ " overlay, also on Rte 35. Acted as lead paving inspector for project duration. Conducted inspection of the following items; Underdrain Installation, Subgrade and Gravel checks and quantities, Paving Inspection, and various other construction tasks.

MaineDOT – Scarborough, ME

Class II Inspector -- Served as lead paving inspector for a 1/3 mile 1 ½" overlay of Rte 1. Responsible for construction inspection of underdrain installation, placement of pavement, full construction for 600 ft of new road, Subgrade and gravel checks for grading and quantities; Signal Foundations, and various other construction tasks.

MaineDOT – Windham, ME

Class II Inspector – Served as lead paving inspector for a 2 mile  $\frac{3}{4}$ " overlay of Route 202.

MaineDOT – Porter, ME

Class II Inspector – Served as lead paving inspector for a 4 mile 1 ¼" overlay of Route 25.

MaineDOT – Scarborough, ME

Class II Inspector – Served as lead paving inspector for a 1/3 mile 1 ½" overlay of Route 1. Responsible for construction inspection of underdrain installation, placement of pavement, full construction for 600 ft of new road, Subgrade and gravel checks for grading and quantities; Signal Foundations, and various other construction tasks.



David is a Resident Inspector with 8 years (all 8 years with JTC) of relevant experience for highway projects with John Turner Consulting. David is responsible for performing level II inspections for our MaineDOT Contract as well as and HMA paving quality assurance.

#### CERTIFICATIONS

- Q/C Resource Nuclear Density Gauge
- OSHA 10 Hour Safety Course
  
- American Concrete Institute Field Testing Technician Grade I
- NETTCP Soils & Aggregate Field Inspector
- NETTCP Concrete Technician
- NETTCP HMA Paving Inspector

## DAVID (JOSH) CUTTER

### Construction Inspector

#### Relevant Project Experience:

MaineDOT - Route 202 Drainage/Safety Improvements – Sanford, ME  
Level 2 Inspector for a \$1.74M MEDOT urban pavement milling and HMA overlay project. Maintained project files and records, material testing reports, paving reports, project diaries, computations, and quantities. Monitored contractor's adherence to schedule and inspected, measured, and documented work performed by the contractor to insure compliance with MEDOT standards and specifications. Conducted field surveys to determine existing conditions and identify issues at various phases of project. Review inspector's daily inspection reports and quantity computations and prepared project correspondence. Attended progress meetings and prepare minutes. Prepared traffic officer hourly payment reports, prepared flagger hourly payment reports, prepare daily report of equipment rental (DREW) reports for hourly labor and equipment pay items. Monitor contractor's traffic control & Maintenance of Traffic of work zones.

Project included pavement milling, HMA pavement overlay (½ inch shim & 1 ½ surface), utilities (water, sewer, storm water) structure adjustments, slip formed curb installation, curb tip down installation, concrete sidewalk, common excavation, loam & turf establishment, and line striping & symbol pavement markings

#### Route 1 York Widening, York, ME

Level 2 Inspector responsible for construction inspection for \$1.64M project consisting of 6 ¾ mile shim and 1 ¼" overlay and numerous drainage and safety improvement on Route 1.



Christopher Cote is a Precast/ Prestressed Plant Inspector for our West Hartford, VT office as well as performing Special Inspections. Christopher has more than 14 years (5 years with JTC) of experience in building and highway construction QA/QC, as well as, fabrication plant inspections. Chris has performed PCI fabrication plant inspection for more than 40 projects.

#### EDUCATION

Bachelors of Science Degree with a major of Architectural Engineering Technology, VT Tech College , 2005  
Associates of Applied Science with a Major in Arch. and Building Eng. Technology, VT Tech College

#### LICENSES AND CERTIFICATIONS

- PCI Level I and II
- OSHA 10-Hour Course
- NETTCP Soil and Aggregate, HMA Paving Inspector, Concrete Technician
- ICC Reinforcing Concrete Inspector, Structural Masonry Special Inspector, Spray Fireproofing
- Q/C Training Course Certification of Nuclear Moisture/Density Equipment
- ACI Level I

## CHRISTOPHER COTE

Lab Manager, Senior Inspector

Bridge Projects (QC for contractor)

Cross Street Bridge, Middlebury VT

I-91 Windsor Bridge, Windsor VT

I-89 Milton Bridge, Milton VT

I-91 Brattleboro Bridge, Brattleboro VT

Town of Bristol, NH. Main Street Bridge

I-89 Richmond, VT Bridge

Route 4 Bridges, Lebanon, NH

VTRANS: more than 20 projects including:

Next Beams – Stowe, VT – JP Carrara and Son's;

Box Beams – Middlebury, VT Cross Street. Bridge – JP Carrara and

Son's; Bulb Tee Girders – Middlebury, VT Cross Street Bridge – JP

Carrara and Son's; and Box Culvert/ Wing Walls – Warren, VT – SD

Ireland

#### MASS DOT

Box Beams – Bourne, MA – JP Carrara and Son's; Bulb Tee Girder – North Hampton, MA

JP Carrara and Son's; Box Culvert/Wing Walls – CSI plant – Hudson, NH; Barrier – CSI plant – Hudson, NH; and

MSE Wall Panels – WM. E. Daily Precast.

#### NHDOT

MSE Wall Panels – Manchester, NH – WM. E. Dailey Precast and SIP Panels –Portsmouth, NH –

JP Carrara and Son's.

#### MAINE DOT

Bulb Tee Girders – Martins Point Bridge – JP Carrara and Son's

Building Inspection Projects:

Hypethern, Lebanon, NH: 120,000 s.f. manufacturing building valued at \$25M

- Dartmouth College McLaughlin Cluster - \$75M
- Dartmouth College Class of 1978 Life Sciences Center \$100M
- Dartmouth College Tuck Living and Learning Center \$40M
- Dartmouth-Hitchcock Medical Center, Emergency/ Pediatrics/Cancer Wing Expansion \$100M



Eric is a Field Technician at John Turner Consulting performing quality control for concrete, HMA paving inspections and soils testing for compaction. Eric has 3 years of experience with JTC.

Eric served in the United States Air Force from 2012-2013. Eric also has some retail sales and service experience.

#### EDUCATION

SUNY Canton - Canton, New York –  
Criminal Justice Studies

## ERIC KEENAN

### Field Technician

#### Representative Project Experience:

Waterbury State Office Complex – Waterbury, Vermont  
Field Technician involved with the QC testing for this major renovation project. The project involves the deconstruction of over twenty buildings in the Winooski River flood plain, restoration/ major renovation of the remaining historic buildings, construction of a new office building and a new central plant, dry flood proofing of all buildings to above the 500 year flood level, and construction of almost all new site infrastructure elements. The current total construction cost estimate is \$175M.

John Turner Consulting Sharon, Vermont 05065

Field Technician 05/2015-present

Perform Quality Control for Concrete

Perform soils test for compaction

Performs HMA paving inspections

Second representative onsite under the supervision of Jason Keenum

John Turner Consulting Sharon, Vermont 05065

Field Technician 09/2014- 11/2014

Perform Quality Control for Concrete

Perform soils test for compaction

Second representative onsite working under the supervision of Jason Keenum

John Turner Consulting - 2014

VTrans Design/Build Bridge – Milton, VT

QC Testing for Testing for Tetra Tech

Trained on concrete and soils testing with Chris Cote and Sean Crowley

Sean Crowley is a Precast/Prestressed Fabrication Plant Inspector. Sean has extensive knowledge of Quality Control/Quality Assurance practices and procedures in construction materials testing in both the field and lab. Sean has 13 (4 years with JTC) years of experience on commercial job sites working with building inspectors, project managers, engineers, subcontractors and DOT representatives performing special inspections, materials testing, reading blue prints as well as reading and understanding AASHTO and ASTM standards and properly carrying out tests accordingly in a timely manner.

#### CERTIFICATIONS

- PCI Level I & II Troxler Nuclear Density Gauge Operator
- NETTCP Soils & Aggregate Field Inspector
- NETTCP HMA Paving Inspector
- NETTCP HMA Plant Inspector
- NETTCP Concrete & Aggregate Technician
- NETTCP Concrete Inspector
- American Concrete Institute Concrete Field Testing Technician
- OSHA 10 Hour

## SEAN B. CROWLEY

### Senior Technician

VTRANS: Sean performs both precast/prestressed HMA plant inspection at various plants for VTRANS.

NHDOT: Sean has provided QA Precast and Prestressed Plant Inspection for several NHDOT projects at various plants.

NHDOT: Sean has provided concrete and soils testing for numerous NHDOT projects along Route I93.

Waterbury State Office Complex: Sean has provided soils and compaction testing for this \$125M project.

Keene Airport: Sean has provided soils and concrete testing at several airports including Keene NH for Stantec Consulting.

City of Worcester, Massachusetts – Utility trench testing and sampling services to the City of Worcester-Department of Public Works.

Massachusetts Port Authority – Hanscom Airfield H219 Old T-Hangar Pavement Field and lab testing for a portion of the perimeter road and Hanscom field. JTC provided various testing services for soil/aggregate compaction and bituminous asphalt paving.

Massport Authority - Framingham Parking Garage – Framingham, MA - Construction materials testing and inspection services for the Logan Express Framingham (LEX-FRAM) parking garage.

SawTooth Parking Garage Claremont NH (new building)  
Soils inspection with lab work and placement  
Rebar inspections  
Concrete inspections field and plant

City of Providence Rhode Island Construction Management and Resident Inspection Services  
Construction Management contracts in 2013 with construction costs totaling over \$7,000,000 with the City of Providence Public Works Department. In 2014 JTC was invited back for additional work as part of their 40 million dollar City Roadway Improvement Program



Adam is a Field Technician at John Turner Consulting performing quality control for concrete, HMA paving inspections and soils testing for compaction. Adam has 3 years of experience with JTC.

#### EDUCATION

Vermont Technical College  
Randolph Center, VT  
AAS in Construction Management

#### CERTIFICATIONS

Troxler Nuclear Density  
OSHA 10  
ACI Field Technician

## ADAM ALLEN

### Field Technician

#### Representative Project Experience:

Waterbury State Office Complex – Waterbury, Vermont  
Field Technician involved with the QC testing for this major renovation project. The project involves the deconstruction of over twenty buildings in the Winooski River flood plain, restoration/ major renovation of the remaining historic buildings, construction of a new office building and a new central plant, dry flood proofing of all buildings to above the 500 year flood level, and construction of almost all new site infrastructure elements. The current total construction cost estimate is \$175M. Second representative onsite under the supervision of Jason Keenum

#### DN Tank Project – Berlin, Vermont

Technician in Charge of field testing concrete as well as breaking cylinders for the project.

#### Vermont Technical College:

Final Project: Survey and draft Langevin site using a total station.

#### Construction Management Software:

Proficient in estimating spreadsheets with Excel and familiar with scheduling with MS Projects.

#### Estimates:

Familiar with estimating practices and RS Means Software.

Former employers: SD Ireland, Engelberth Construction, Army National Guard and EC Construction.



## EDUCATION

- Graduate of Becker College - BS - Business Administration Deans List 1996
- Graduate of State University of New York
- Environmental Science and Forestry School
- AAP Forest Technology with emphasis on Surveying Cum Laude 1999
- Graduate of Alfred State College
- Associates degree in Surveying Engineering.

## CERTIFICATIONS

- Certified by American Concrete Institute on 12/04/99 as an ACI Concrete Field Testing Technician - Grade I

## JOSEPH DiBERNARDO

Land Surveyor

DiBernardo & Associates – Surveying Sub Consultant

Joseph is a graduate of Becker College, SUNY ESF and SUNY Alfred where he received a Bachelor of Science Degree in Business Administration, Associates of Applied Science in Forest Technology with an emphasis in Surveying and Associates of Applied Science in Surveying Engineering respectively.

Joseph worked for his father Aurelius since the age of 13 becoming more serious at the age of 24 when he returned to Vermont to work for his father and eventually take over the family business. In 2007 Joseph purchased the business from his father and became the sole proprietor of DiBernardo Associates. Aurelius at the age of 76 is still working at DiBernardo Associates as a consultant. Currently both Joseph and Aurelius are active Land Surveyors in Vermont and New Hampshire. Combined Joseph and Aurelius have over 60 years of experience as Licensed Land Surveyors.

Joseph worked on the following projects as either Crew Chief or as the Licensed Land Surveyor in charge:

### Town of Brattleboro, VT

Municipal Wastewater Treatment Facility for Engineering Design

Layout new West Brattleboro Fire Station for construction crew

New addition for Brattleboro Central Fire Station for construction crew.

### City of South Burlington, VT

Town Office and Fire Station and the City of South Burlington Public Works property to be utilized for Engineering Design

Mayfair Park Subdivision to be utilized in Engineering design.

City's Department of Public Works facility for use in Engineering Design.

Fire Station Properties and the Municipal/Police Station to be used in Engineering Design. Project Includes Topographic and Boundary Surveys.

6/12/2017  
New hire.  
10/18/2018:  
Superseded. See updated  
resume in the next page.



Richard has nearly 15 years of experience in the construction industry. Richard began his career as a Project Engineer working to maintain quality control and budgets. Richard moved on to serve as a Project Manager and Construction Administrator for various construction firms in NH and MA.

#### EDUCATION

Vermont Technical College, Randolph Center – Associates of Science, Civil and Engineering Technology

## RICHARD SEYMOUR

### Resident Engineer

---

Representative Project Experience:

#### Vermont AOT Projects

##### Village of Bellows Falls School & Henry Street Waterline Replacement

Replacement of approximately 5000LF of ductile iron water main and appurtenances; Project also included temporary water system for approximately 40 residences, new ¾" CTS service to each residence, complete pavement overlay.

##### Putney CMG PARK (26) – Putney Park & Ride

Construction of a new park and ride facility, including new subbase, pavement, markings, signage, lighting, bus shelter, landscaping, and other highway related items.

##### Springfield CMG PARK (32) – Springfield Park & Ride

Reconstruction of the existing park and ride lot, constructing a bus shelter, relocation of existing shared use path, pavement markings, lighting, landscaping and other highway related items.

##### Woodstock ER 0241 (40)

Reconstruction of the southerly side slope and riverbed, stream diversion, removing and replacing guardrail, cold planning, paving, traffic control plan, and other highway related items along Route 12 in Woodstock, VT.

##### Putney Safe Routes to School

Installation of sidewalk, cross walk & speed limit digital signage, and new finish gravels at Putney Central School entrance.

##### Rockingham IM 091 (71)

Construction of roadside catchment ditch and ledge removal with extensive traffic control plan on Route I-91 Southbound.

##### Dover STP EH12 (3)

Grading, subbase, new vertical granite curbing, Portland cement concrete sidewalk, new catch basins, new storm pipe, driveway reconstruction, and other highway related items.

**YEARS OF EXPERIENCE**

15

**EDUCATION**

A.S., Civil and Engineering Technology,  
Vermont Technical College

**CERTIFICATIONS**

NETTCP HMA Paving Inspector  
OSHA 10

Richard has 15 years of experience in the construction industry. He began his career as a Project Engineer working to maintain quality control and budgets. Richard moved on to serve as a Project Manager and Construction Administrator for various construction firms in NH and MA.

Representative Experience

**Vermont Agency of Transportation**

**St. Albans HPP 8000(17) / Phase 1**

Cold planning and pavement of existing streets, new curbing and sidewalks, utility infrastructure improvements including drainage, sewer, and water main, streetscape enhancements including new street lighting, landscaping, signage and line striping.

**Valley Street Box Culvert – Springfield, VT**

Project manager for replacement of an existing corrugated culvert with an approximately 16' x 8' x 40' box culvert. The project was located in a tight challenging site in town and included stream relocation, relocation of existing sewer main, replacement of existing stone / concrete walls, guardrail, subgrade replacement, and new bituminous concrete pavement.

**Village of Bellows Falls School & Henry Street Waterline Replacement**

Project Manager for the replacement of approximately 5000LF of ductile iron water main and appurtenances; Project also included temporary water system for approximately 40 residences, new ¾" CTS service to each residence, complete pavement overlay. Work in conjunction with the Town Manager and the Engineer to provide submittals per the project specifications, procure materials & equipment, take part in site visits & meetings, and prepare project payment requisitions & schedules.

**Putney CMG PARK (26) – Putney Park & Ride**

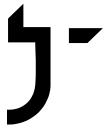
Project Manager for the construction of a new park and ride facility, including new subbase, pavement, markings, signage, lighting, bus shelter, landscaping, and other highway related items. Provide Vermont AOT certifications and procure materials.

**Springfield CMG PARK (32) – Springfield Park & Ride**

Project Manager for the reconstruction of the existing park and ride lot, constructing a bus shelter, relocation of existing shared use path, pavement markings, lighting, landscaping and other highway related items. Provide Vermont AOT certifications, procure materials, and provide schedule updates.

**Woodstock ER 0241 (40)**

Project Managers for the reconstruction of the southerly side slope and riverbed, stream diversion, removing and replacing guardrail, cold planning, paving, traffic control plan, and other highway related items along Route 12 in Woodstock, VT. Provide Vermont AOT certifications, procure materials, and provide schedule updates.



### **Putney Safe Routes to School**

Installation of sidewalk, cross walk & speed limit digital signage, and new finish gravels at Putney Central School entrance. Work in conjunction with the Town Manager and the Engineer to provide submittals per the project specifications, procure materials & equipment, take part in site visits & meetings, provide Vermont AOT certifications, and prepare project payment requisitions & schedules.

### **Rockingham IM 091 (71)**

Construction of roadside catchment ditch and ledge removal with extensive traffic control plan on Route I-91 Southbound. Provide Vermont AOT certifications, procure materials, and provide schedule updates. Design and implement traffic control plan and rolling road block plan.

### **Dover STP EH12 (3)**

Grading, subbase, new vertical granite curbing, Portland cement concrete sidewalk, new catch basins, new storm pipe, driveway reconstruction, and other highway related items.

### **Reclaim Experience (Project Manager)**

#### **US Army Corps of Engineers Townshend Dam, Townshend, VT**

Approx. 2000LF reclaim, regrade, and pave Dam Road.

#### **Henry Street, Bellows Falls, VT**

Approx. 1300LF reclaim, regrade, and pave urban neighborhood Road.

#### **St. Michael's School, Brattleboro, VT**

Approx. 3600SY reclaim, regrade, and pave parking area with new drainage structures.

#### **US Army Corps of Engineers Surry Mountain Lake, Surry, NH**

Approx. 1400LF reclaim, regrade, and pave beach access road.



Mr. Stomski has more than 32 years of experience while employed with agencies such as the U.S. Department of Interior, U.S. Fish and Wildlife Service, Department of Defense, Air Force Geophysics Laboratory and several private engineering firms in New England, providing assistance on a variety of highway, bridge, civil, dam safety, aviation, environmental, railway (AMTRAK & CSX) and building construction projects for various clients including NHDOT, Mass HIGHWAY, VTRAN, MaineDOT, ConnDOT, NYDOT and municipalities. Experience includes: Performing on-site construction observation of highway rehabilitation or new roadway construction projects; monitoring soil erosion and sedimentation control devices; wastewater and water treatment system, dam repairs and civil site construction projects including storm water pond and detention systems; landfill closure projects; building construction projects including site, mechanical, structural and electrical construction work; quantity calculation and project estimating, collected field measurement via surveying.

#### EDUCATION

Associate of Science, Keene State College

## ROBERT STOMSKI

Resident Engineer

---

#### Relevant Project Experience:

***Vermont Agency of Transportation, Rutland, Vt.; Highway Resurfacing Program***

Engineering Technician assistance relating to highway resurfacing programs (STP) for VT Route 9 in the Town of Bennington, Vt. & I-89 from Randolph, Vt. To Montpelier, Vt.

***Project No. 7483***

***Marlborough College, Marlborough, VT.; College Dormitory Project***

Provided part-time resident inspection during construction of a new dormitory which included water & sewer line installation. Site inspection & monitoring of erosion control measures as prepared by CHA for Marlborough College.

***Project No. 9288***

***Vermont Agency of Transportation, Rutland, Vt.; Clarendon Gorge Trailhead Parking***

Engineering Technician assistance in scoping, planning conceptual alternatives including final design for a parking facility at Clarendon Gorge Trailhead off VT Route 103 in the Town of Rutland.

***Project. No. 9959***

***Dubois & King Engineering; Brattleboro Union Station Improvements, Brattleboro, VT.***

Engineering Technician assistance in obtaining data for traffic analysis, air analysis and noise analysis for the Town of Brattleboro, VT.

***Project No. 9992***

***Daniel V. Scully Architects; Waypoint Interpretive Center, Bellows Falls, VT.***

Provided part-time resident inspection which included water & sewer line installation and testing for the Town of Bellows Falls, VT.

***Project No. 10185***

***Town of Brattleboro, VT.; Grove Street Parking Lot Renovation:***

Engineering services relating to renovation of a municipal parking lot in the Town of Brattleboro.

***Project No. 10313***

***Marlborough College, Marlborough, VT.; New Water System Design:***

Provided site inspection & monitoring of erosion control measures as prepared by CHA for Marlborough College.

***Project No. 11162***

***Town of Vernon, VT.; Huckle Hill Road Culvert Replacement:***

Engineering Technician assisting with Survey Group and Engineering Services for replacement of the existing Huckle Hill Road Culvert with a precast concrete box culvert.

***Project No. 14359***

***Cumberland Farms – Brattleboro, VT:***

Construction Field Representative / Inspector who provided part-time resident site inspection during construction of a new Cumberland Farm store which included water & sewer line installation and testing for the Town of Brattleboro, VT.

***Project No. 14645***

***Town of Vernon, VT.; Tyler Hill Road Culvert***

Engineering Technician assisting with Survey Group and Engineering Services for replacement of a 48' wide culvert carrying an unnamed brook under Tyler Hill Road.

***Project No. 16394***

***Snow Mt. Village Homeowner's Assoc., West Dover, Vt.:***

Construction Field Representative / Inspector who provided construction observation, field verification and plan review of building demolition / separation from Sports Center Complex and old Conference Center.

***Project No. 16913***

***Town of Jamaica, VT.; Emergency Services to the Town after Hurricane Irene (2011 – 2013):***

During the incident period of August 27 through September 2, 2011, Hurricane Irene brought torrential rain and flooding throughout the Town of Jamaica, when excessive run-off caused fast flowing flood waters in the North Branch of Ball Mountain Brook to overtop it's banks washing out roadways, bridges & culverts. As Construction Inspector, Acting Construction Manager, & Project Coordinator, I assisted CHA with damage assessments; assisted Town Officials, FEMA, VTrans, ANR, VEM Officials w/ documentation and by overseeing rebuilding of roadways, bridges & culverts at an estimated cost of \$5,527,000.00.

***Project No. 23276***

***Town of Jamaica, VT.; Local Project Manager for 3 Bridges (after Hurricane Irene 2011 – 2013):***

Provided project management services for 3 separate culvert or timber deck bridge replacement projects. As Municipal Project Manager, I was responsible for coordinating all project activities and

monitoring all aspects of project development on behalf of the municipality while acting as liaison between the between the Town, VTrans, FEMA, consultants and or contractors as necessary at an estimated cost of \$36,724.00.

***Project No. 27043***

***Vermont Gas System, Inc., Burlington, Vt.:*** Spent 2 months (April & May, 2013) assisting Project Manager and Construction Manager / Superintendent with establishing Construction Specifications & RFP (Request for Proposals) for expansion of a 41.0 mile, 12" ANGP (Addison Natural Gas Pipeline) that will be installed from Colchester, VT. to Middlebury, VT.

***Project No. 24381***

***Vermont Gas System, Inc., Burlington, Vt.:*** Spent 2 months (April & May, 2013) assisting Project Manager and Construction Manager / Superintendent with establishing Construction Specifications & RFP (Request for Proposals) for expansion of a 5.0 mile, 16" ANGP (Addison Natural Gas Pipeline) PHASE VI that will be installed from St. Albans, VT. to Georgia, VT.

***Project No. 25158***

***Vermont Agency of Transportation, Montpelier, Vt.:*** Spent 4.5 months (Nov. 2013 thru mid-March, 2014) as Resident Engineer @ Morrisville-Stowe State Airport (MVL – Airport Runway Rehab. Project), Phase I - overseeing tree cutting & clean-up operations on State owned & private property (cutting easement rights) in non-wetland & in wetland areas. Performed communications w/ landowners; responsible for keeping daily project records (C.O.R.); filing FAA status reports; holding weekly project meetings. Provided monthly cost reports and reviewed & approved contractor's monthly payment requisitions. Provided client w/ change orders, RFIs, meeting minutes, correspondence, submittals & weekly schedule updates.

***Project No. 27359***

***Vermont Agency of Transportation, Montpelier, Vt.:*** Spent 9.0 months (March, 2015 thru December 2015) as Construction Inspector @ Rutland Southern Vermont Regional Airport - Project Number AV158001-300 (RUT – Airport Runway Rehab. Project), Phase II – observing construction of Runway 1 Safety Area that including a 800' long segmental retaining walls, EMAS block installation, paved safety area, relocation of localizer/DME equipment and associated access road, guardrail and fencing; the reconstruction, marking, lighting, and signing of approximately 200 feet of Taxiway D; the construction, marking, lighting, and signing of approximately 1,300 feet of new Taxiway E. The work includes, but is not limited to: saw



cutting existing pavement; removal of bituminous and concrete pavements; removal of existing electrical conduit, taxiway lights and signs including bases; excavation; subbase and base course construction; bituminous paving; pavement marking; installation of runway and taxiway edge lights and signs, electrical manholes and handholes, concrete encased ducts, electrical distribution system, upgrade to equipment in the Airfield Electrical Vault, stormwater drainage pipes, catch basins, and drain manholes; underdrains and cleanouts; and temporary and permanent erosion control.

*Project No. 29149*