



Qualifications for
Two-Tier (State-Local)
Qualifications-Based Selection
for At-The-Ready Consultant
Engineering Services for
Municipalities 2023: Municipal
Project Manager (MPM)

Submitted to
Vermont Agency of Transportation

February 9, 2023



FUSS & O'NEILL

SECTION A

Cover Letter

Stormwater Scoping Study Stakeholder Engagement Meeting – Castleton, VT





FUSS & O'NEILL

February 9, 2023

Ms. Nydia Lugo
Civil Engineer
Vermont Agency of Transportation
Highway Division - Municipal Assistance
219 North Main Street
Barre, VT 05641

RE: At-The-Ready Consultant Engineering Services for Municipalities: Municipal Project Manager

Dear Ms. Lugo:

Municipalities across Vermont face challenges with maintaining infrastructure and improving the user experience. These challenges can be attributed to funding issues, manpower, location, or even weather related concerns. With the Vermont Agency of Transportation (VTrans) having the At-the-Ready contract mechanism, municipalities have a great opportunity to select a qualified consultant without having to administer a traditional procurement process. Having been a trusted project partner with VTrans for more than 35 years, Fuss & O'Neill has the technical capacity and experience to serve as the Municipal Project Manager (MPM) to Vermont Municipalities.

VTrans is Fuss & O'Neill's top client, and our firm continues to invest in Vermont, both at a state and local level. We currently hold retainer contracts with VTrans for Highway, Safety and Design, Structures Engineering, Pavement Management, Surveying & Right-of-Way, Plans and Titles, and At-the-Ready. We have a complete understanding of the VTrans process, having completed many projects through their Municipal Assistance (MA) Section, and we enjoy working on local projects throughout Vermont. Our team has worked to raise awareness of the At-the-Ready process among our municipal and regional planning clients, and have managed successful projects through this contract. Our firm also holds statewide on-call contracts with the Vermont Department of Buildings and General Services, and works with municipalities, school districts, and regional planning commissions on a variety of engineering and environmental projects.

With more than 340 employees across New England, Fuss & O'Neill is a multidisciplinary firm with in-house disciplines that include transportation and roadway design, geotechnical engineering, bridge engineering, stormwater management, environmental, landscape architecture, and electrical engineering. Our team will be led by Principal-in-Charge Philip Forzley, PE. Phil leads our firm's Vermont operations and works frequently with local municipalities to improve and further develop the state's built environment. He will be supported by talented technical professionals from our Vermont and New Hampshire offices that have the knowledge and experience to provide insight to both municipal clients and contractors in an MPM role.

Herein we detail qualifications that make Fuss & O'Neill uniquely qualified to support VTrans and municipalities throughout Vermont in the At-the-Ready contract. Please contact the undersigned with any questions.

Sincerely,

Philip Forzley, PE
Principal-in-Charge | Vermont Office Manager
802.698.0479
pforzley@fando.com

205 Billings Farm Road
Suite 6B
White River Junction,
VT 05001

802.698.0370

www.fando.com

California
Connecticut
Maine
Massachusetts
New Hampshire
Rhode Island
Vermont

SECTION B

General Firm Information

At-The-Ready Municipal Project Manager Services, Route 30 Sidewalk Construction – Castleton, VT



Section B - General Firm Information

Fuss & O'Neill is a full-service engineering firm with a depth of staff and experience to complete any project – from initial design to final construction. Headquartered in Manchester, CT, our 340+ person firm has offices in all 6 New England states, and continues to expand. As we grow in size, we maintain our client-first philosophy. We work closely with all stakeholders to give life to a community's vision. Our professional staff maintains licenses and certifications across a wide range of engineering, planning, landscape architecture, design build, scientific, and manufacturing disciplines.

We place great emphasis on collaboration, both within the company and with our clients. We are guided by what is best for the client and the project, identifying project champions, naming project leaders, building project teams, and providing responsive service and quality deliverables. Our mission is to provide our clients with innovative and practical engineering, scientific, and planning solutions. It is what we have been doing since our firm was established in 1924, and what we remain committed to do.

Firm History

Fuss & O'Neill was founded in 1924, and has been practicing engineering for nearly a century. In 2017, Fuss & O'Neill, acquired CLD Consulting Engineers, resulting in a more diverse, dynamic overall firm. Below are former firm names and dates of those incorporations:

Griswold Services, Inc. – 1925 to 1967

Griswold Engineering, Inc. – 1967 to 1971

Griswold & Fuss, Inc. – 1971 to 1977

Fuss & O'Neill, Inc. – 1977 to present

Main Point of Contact

Philip Forzley, PE

Vice President, Vermont Office Manager

Fuss & O'Neill, Inc.

205 Billings Farm Road

White River Junction, VT 05001

802.698.0479

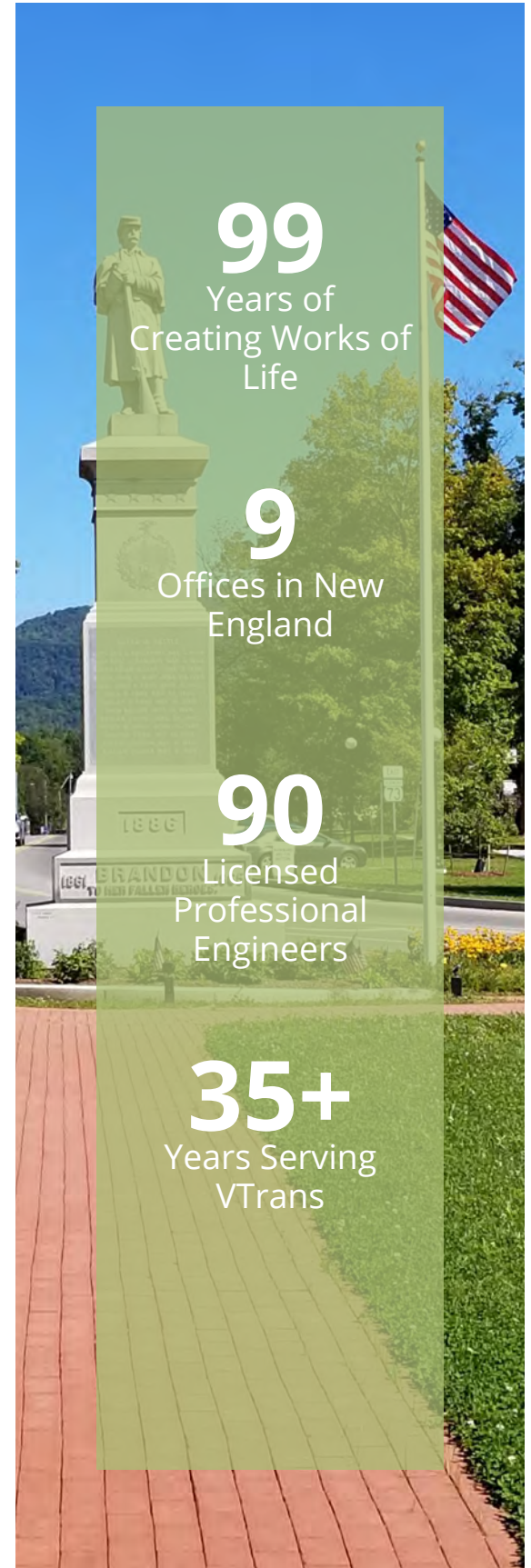
pforzley@fando.com



Over the years, Fuss & O'Neill has developed strong working relationships with various local and state transportation officials, and our firm has acquired a solid understanding of their respective standards for roadway design. Our engineers have all become well-versed in VTrans design standards, engineering documents, and specifications. We have worked with municipal personnel on large-scale projects such as the Pittsford-Brandon US Route 7 corridor for more than two decades, and we have worked on smaller projects, such as the Stowe Lower Main Street sidewalk project. No matter the size and scope of the assignment, Fuss & O'Neill will provide qualified personnel, that have been through the VTrans MAS design process, to deliver the quality, service and technical expertise that your project requires.

VTrans is Fuss & O'Neill's top client across our firm. We have a team solely dedicated to serving VTrans and projects that come through the Municipal Assistance Section (MAS). Our team has a great track record in helping municipalities navigate the VTrans process while delivering project solutions that meet the needs of their end-users.

Fuss & O'Neill's specialties include roadway and highway design, intersection and signal design, bicycle and pedestrian facility designs, bridge and culvert design and replacement, and additional transportation and traffic engineering projects. Our team also has extended in-house abilities that encompass Right-of-Way services, geotechnical engineering, environmental engineering and hazardous materials remediation, landscape architecture, and lighting design – all components that could contribute to municipal projects.



Business Structure and Quality Control

Business Structure

Fuss & O'Neill is a full-service engineering firm with a depth of staff and experience to complete any project – from scoping to initial design through construction. Our firm has 10 regional offices throughout New England and New York, and has the capabilities and depth of resources of a large firm, yet maintains the responsiveness of a small firm. Our firm is owned by our 29 shareholders, a list that includes a number of professionals included in this VTrans contract, including Principal-in-Charge, Phil Forzley, PE. Our core VTrans design team members are based in our Manchester, NH and White River Junction, VT offices, and are 100% devoted to VTrans. This team will lead this contract, while receiving technical support firm-wide. VTrans is Fuss & O'Neill's top client, and we have put a business and management structure in place to cater to the needs of your staff.

Phil Forzley, PE will serve as Principal-In-Charge for this contract, and it is his responsibility to achieve client satisfaction on all project assignments. He will maintain executive-level oversight of quality, safety, and service, and can be pulled into projects as necessary. He will frequently interface with Fuss & O'Neill project managers to understand project progress. Phil is responsible for making sure that VTrans projects are a priority, and that the proper staff are available to meet your critical deadlines. When an assignment is released, Phil will designate a project manager for the project, based on the requirements of the project and the expertise of our in-house personnel. Based on our organizational chart in Section C, we will also assign the appropriate staff to work on the project and will collaborate with VTrans and the municipality to agree to the scope, schedule, and budget of each assignment.



Local Staff. Regional Support.

The VTrans At-the-Ready Contract will be managed from our White River Junction, VT and Manchester, NH offices, and will be supported by resources throughout the company.

Quality Control

We understand that a small oversight on plans can lead to overages and delays in construction. As we believe that quality control and attention to detail are of highest priority, we have recently revised and expanded our internal quality control procedures. These QA/QC procedures were developed with the input of the staff that will be assigned to projects from this contract to ensure that staff at every level are focused on quality. By nature of the MPM role, our designated Municipal Project Manager essentially serves as a QA/QC Manager for the assignment at hand, and it is their responsibility to check the quality of the deliverables. He/she will work with the design engineer for each given assignment and develop a project specific quality plan that they will implement during the development of design. In addition to common QA/QC steps such as reviews by project leaders, key elements of our QA/QC programs include third-party reviews and the use of checklists. If needed, we use in-house technical experts to review designs and reports while they are in draft form and prior to being forwarded to our clients. This allows a fresh set of experienced eyes to review a project closely and see potential issues not seen by the project team. Quality control measures are applicable to any work produced by subconsultants as well, as they are held to the same review as our in-house staff.

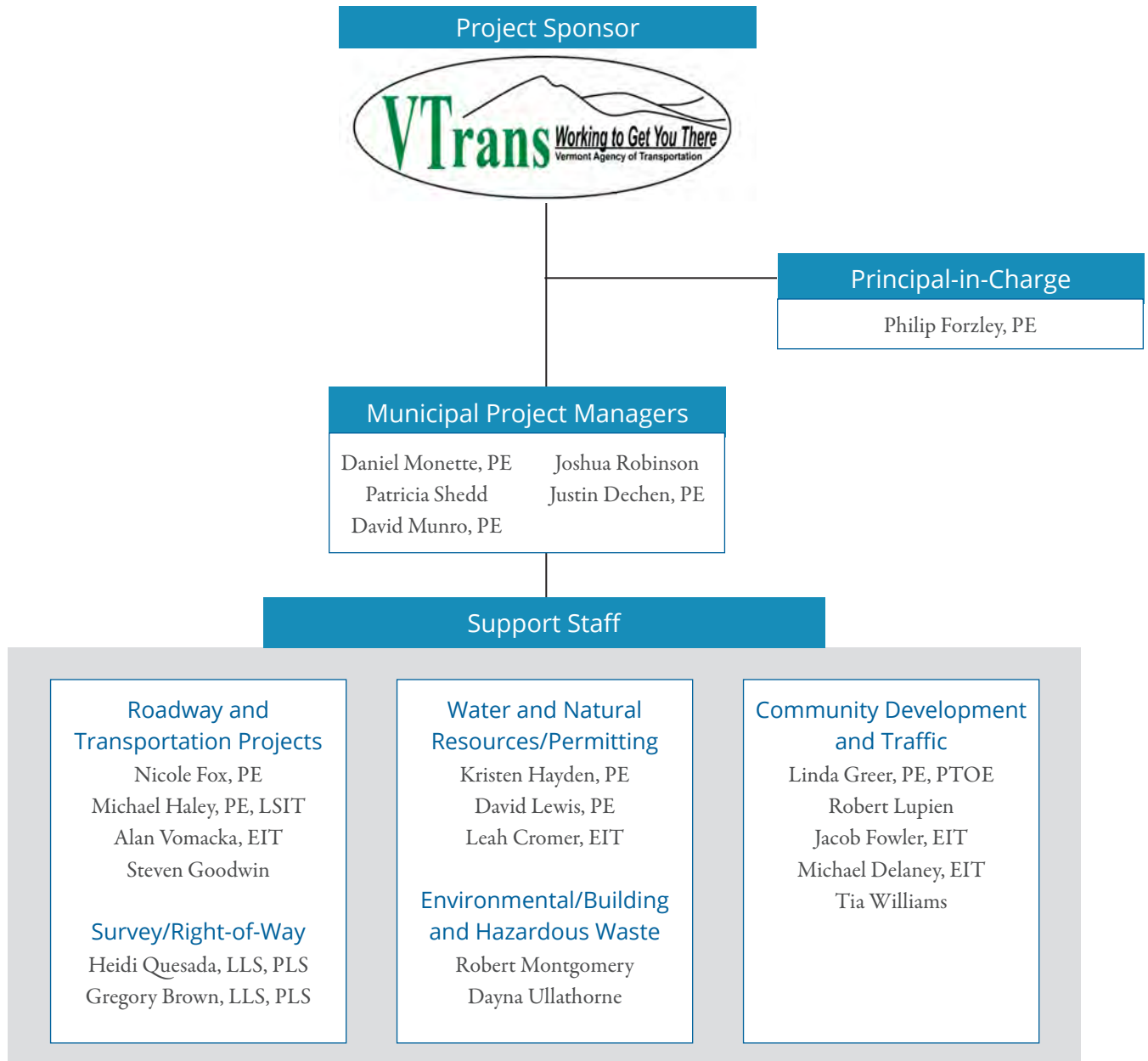
SECTION C

Organizational Chart

Bristol Bicycle Connector Route Public Engagement – Bristol, RI



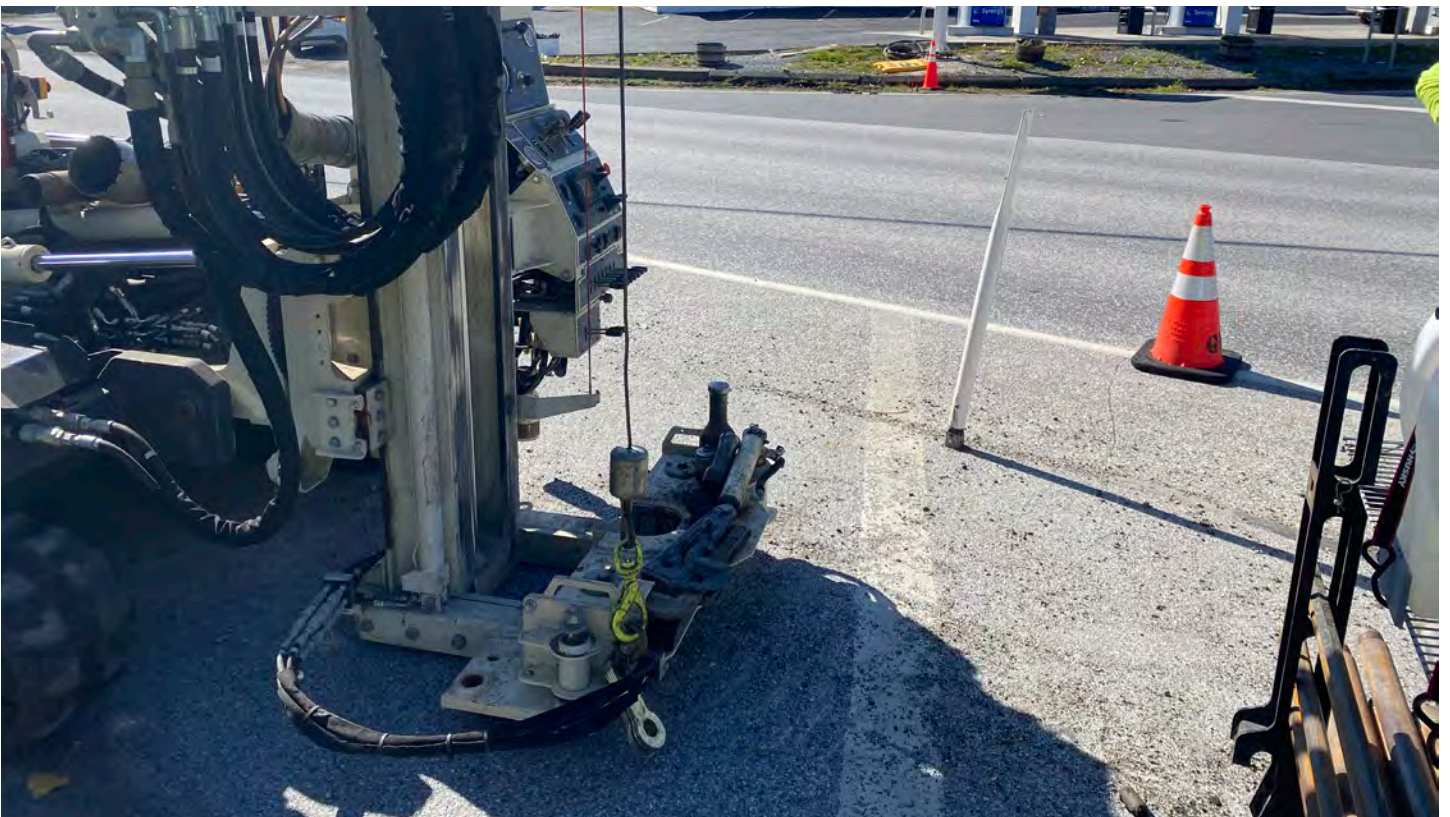
Section C - Organizational Chart Municipal Project Management



SECTION D

Availability Chart

US 2/VT 314 Intersection improvements and Environmental Site Assessments – South Hero, VT



Section D – Availability Chart MPM Services

The following is an availability chart for the VTrans At-The-Ready Contract. Our team is dedicated to providing exceptional service and technical expertise on VTrans Municipal Assistance projects, and will dedicate the appropriate resources to exceed project requirements. The proposed Municipal Project Managers will oversee and manage assignments, drawing from technical experts shown below. Additional personnel, identified on the organizational chart, will be utilized if they are needed to manage and execute assignments.

Name	Role	Availability
Philip Forzley, PE	Principal-in-Charge	5%
Patricia Shedd	Municipal Project Manager	50%
Daniel Monette, PE	Municipal Project Manager	50%
David Munro, PE	Municipal Project Manager	50%
Joshua Robinson	Municipal Project Manager	50%
Justin Dechen, PE	Municipal Project Manager	50%
Nicole Fox, PE	Roadway Design and Transportation	10%
Kristen Hayden, PE	Water and Natrual Resources/Permitting	10%
Linda Greer, PE, PTOE	Community Development and Traffic	10%
Robert Montgomery	Environmental/Building and Hazardous Waste	10%

SECTION E

Technical Capability

Stormwater Scoping Study – Bridport, VT



Section E - Technical Capability

Qualifications and Experience of Firm

Fuss & O'Neill has been providing roadway design services for State, Federal, municipal, and private sector clients throughout New England for decades. Our most recent experience has involved a wide variety of projects for VTrans, NHDOT, MaineDOT, MassDOT, CTDOT, RIDOT, U.S. Forest Service, municipalities and private clients. Projects have included full reconstruction of roadways in urban villages to reclaim projects along Vermont State Routes, large and small box culvert replacements, signaling intersections, signing projects, and large and small bridge replacements. Because we work with a variety of clients, we are able to see a variety of processes used by these clients. Our Transportation Team is diligent about sharing information on our project experiences with the goal of continually looking at ways to improve our service. Additionally, our team has been working with VTrans for more than 35 years, giving us a strong understanding of the Agency's processes, procedures, and expectations on projects. We work on projects through the Municipal Assistance (MA) Section, as we work in conjunction with Town personnel and VTrans staff to deliver high-quality design solutions on projects across Vermont.

Our team always seeks the best for our clients, whether we are in the role of a municipal project manager, resident engineer, or design consultant. Having worked in Vermont for VTrans and municipalities throughout the state, we have an in-depth understand the relationship between all parties for a successful contract. Fuss & O'Neill can draw on these project experiences to help streamline the project process, serving as an advisor to the Town, a technical resource to the contractor, and an information source to the public.

The advantage of the Fuss & O'Neill team lies within the depth of resources and our specific experience working for VTrans and executing projects through the MA process. Many of the tasks outlined as responsibilities for the Municipal Project Manager (MPM) are tasks we often make part of our process as the design consultant. We work with utility companies and local officials on coordination of permits, utilities and Right-of-Way. We have helped municipalities as a third party plan reviewer, and have helped prepare RFP/RFQ documents to help with their procurement process. Our team coordinates with property owners when applicable, informing them of project impacts, the Right-of-Way process, and their rights as related to the "Uniform Act". Fuss & O'Neill is well-suited and positioned to take on this role as an MPM through the At-the-Ready contract.

Approach to the MPM Role

Fuss & O'Neill has completed numerous MA projects that have successfully followed the "Guidebook for Municipally Managed Projects". This book provides valuable information on the process and checklists. Utilizing the Guidebook and our years of experience with these projects helps solidify our understanding of the process and the clients' desired outcome. The MA Section has templates for all of the municipalities' consulting needs to assist in preparing Request for

Qualifications and Requests for Proposal documents, of which we are very familiar. For municipalities that do not have this experience, the selection process can be challenging. However, a well written RFQ/RFP that outlines the municipalities' needs is critical to selecting the appropriate design consultant.

To be an effective MPM, Fuss & O'Neill would prioritize expedited reviews to help resolve issues quickly that might otherwise delay a project. We understand that any project delay has the potential to increase the project cost. Closely monitoring the design consultants' activities helps to maintain the project schedule. Regular communication with the municipality and VTrans MA Project Manager to review progress and discuss design elements to facilitate a project that meets the community's expectations. All communication and public meetings are documented as either meeting minutes or a memorandum to the file, and is then distributed via email to the team so all parties have the same information.

Our team routinely conducts property owner meetings, prepares ROW plans, titles and the easement language needed to acquire the rights to construct a project and when necessary provides testimony at the Necessity Hearing. We will also coordinate with utility companies to review the potential impacts to their infrastructure to formulate a solution that is acceptable to all stakeholders. The Fuss & O'Neill MPM is responsible for overseeing that all contract and permit provisions are met, and that contract plans are submitted on time and on budget. Our Project Managers complete monthly project status updates and invoices for all of our MA projects, and are knowledgeable on the invoicing requirements, allowable expenses, backup information required, and the required statement attesting that the invoice is complete and accurate.

Fuss & O'Neill has extensive experience preparing bid packages for construction, reviewing the special provisions to ensure all ROW agreements, permit requirements and local/state/federal laws are met. The MA Section has an excellent template that we utilize to start putting together the bid package. Our firm is also experienced with advertising for construction, issuing addenda to answer contractors' questions, and preparing the bid analysis to determine the apparent low bidder. We routinely attend Preconstruction Meetings which is critical to make sure the contractor, resident engineer, municipality

MPM Responsibilities

- Ensure design consultant adheres to the MA Guidebook
- Review submissions to ensure they adhere to State and Federal regulations and permit requirements
- Ensure the ROW plans, documents, and negotiations conform to the Uniform Act
- Coordination with municipality and VTrans
- Maintain project schedule
- Assist municipality with preparation of RFP/RFQ and Scope of Work for Resident Engineer and Contractor
- Review invoices for accuracy
- Process RFI's
- Project construction administration and project closeout
- Maintain project files should the project be audited.

personnel, and design consultant understand the project requirements. This is also a forum for the contractor to ask any questions they may have about the contract documents.

During construction, Fuss & O'Neill will provide oversight of the contractor and construction inspector, attend construction meetings and field reviews as necessary, and review daily work reports. Should a Change Order become necessary we will review and recommend for the municipalities approval and email to the VTrans PM for their approval. When construction is substantially complete, Fuss & O'Neill will participate in a walkthrough and prepare a memo with a punch list of items that need to be resolved prior to final acceptance of the project.

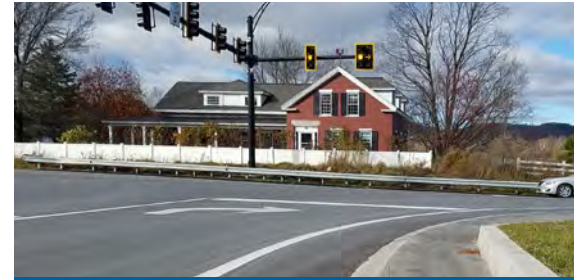
Fuss & O'Neill's record keeping will include all documentation throughout the life of the project and will be provided to the municipality upon final acceptance of the project. The files will include information necessary should the project be audited.

Roadway Design and Safety Engineering

Through our vast experience working on hundreds of roadway projects throughout New England, our transportation engineers have become well-versed in roadway geometry, drainage, traffic signal design, traffic calming, and context-sensitive design techniques from initial preliminary engineering design stages through the construction support phase. Our highway designers have handled assignments from the largest interstate highway improvements to small local road and intersection geometry.

Our engineers have design and field inspection experience with the construction of municipal infrastructure projects, as well as projects funded by various state programs in New Hampshire, Vermont, Maine, Connecticut, Massachusetts, and Rhode Island, allowing us to quickly adapt to the specific project needs of a municipality. Over the years we have developed strong working relationships with various local and state transportation officials and have acquired a solid understanding of their respective standards for roadway design. We evaluate each roadway project in a thorough manner before developing a design to address the needs and concerns of individual communities. We are able to evaluate an existing high-crash location, safety issue, or access management concern and integrate our highway design recommendations with proposed land use and regional transportation improvement strategies. Our roadway safety engineering experience includes designing safety elements such as guardrails, barrier systems, impact attenuators, breakaway sign supports, and other safety devices, as well as special treatments for difficult locations.

Over the years our firm has developed a strong working relationship VTrans, and have a solid understanding of their respective standards for roadway design. We evaluate each project before developing a design that includes context-



Signals in Jericho Improve Safety
Fuss & O'Neill designed signals at the intersection of VT 15 and Browns Trace in Jericho to meet the traffic and safety needs of the community.

sensitive solutions to address the needs and concerns of the individual communities. Fuss & O'Neill has the experience to evaluate existing accident/safety issues or access management concerns and integrate our highway design recommendations with proposed land use and regional transportation improvement strategies. We have been providing construction administration and bidding services for state, municipal, and private projects throughout its history. Our construction services include communication with the public, full or part-time project inspection, running construction meetings, and erosion and sediment control inspections. We review and respond to contractor submittals, requests for information, quality control field test reports, and payment requests. We also develop design modifications, review proposal requests and change orders, prepare contract close-out information, and review/assemble record drawings.



Delaware and Hudson Rail Trail
Fuss & O'Neill provided upgrades that included grading and resurfacing the nearly 20-mile Delaware and Hudson Rail Trail that extends over two sections across southwestern Vermont.

Bicycle, Pedestrian Facilities, and Rail Trails

Greenways connect communities. They offer a break from the solitary and confined methods of traditional travel, creating a shared avenue to the natural environment. At Fuss & O'Neill, we combine our firsthand knowledge of regional trail networks with our decades of local site/civil engineering experience to develop greenways and rail trails, transforming underused space into safe and traversable destinations. We believe that the best transportation solutions are the ones that accommodate all users.

Fuss & O'Neill has planned, designed, and permitted some of the most progressive transportation solutions in the Northeast, while always adhering to state and environmental regulations. We design with the user in mind – creating suitable spaces for cyclists, walkers, runners, and those with special needs. Each greenway, while often providing connectivity to a larger system, has its own identity. Each must pair aesthetically with its natural surroundings. Our engineers and planners design with this compatibility in mind – looking for reuse and refurbishment opportunities and using natural, local, and sustainable materials whenever possible. With nature guiding our design path, the result is a natural fit.

Bridge and Culvert Engineering

Fuss & O'Neill provides bridge engineering services to municipalities, state agencies, architects, industrial, and private clients for vehicular and pedestrian use. Projects range from inspection and evaluation of existing structures to the design of bridge repairs, rehabilitations, replacements, and new structures.



Bridge Replacement in Barton
Fuss & O'Neill performed a complicated replacement of a 26-foot span concrete T-beam bridge over Roaring Brook in Barton. The project went through the VTrans Municipal Assistance Section process. Many improvements were made while staying within the existing Right-of-Way. The bridge was part of the Accelerated Bridge Program and was closed for four weeks for construction.

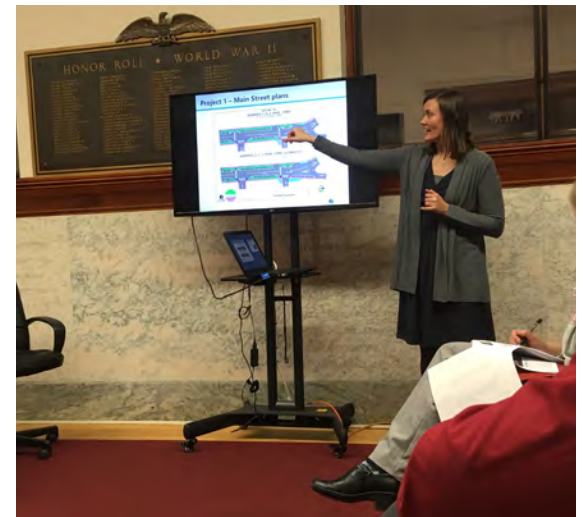
Utilizing a variety of construction materials, we pride ourselves on designing bridges, arches, and culverts that complement their surroundings while meeting the needs of our clients and community residents. Because of our extensive experience in this field, we are able to develop innovative, cost-effective solutions that minimize visual and physical impacts to the surroundings and achieve project goals. Our expertise includes repairs to concrete and steel bridge elements, rehabilitation of historic structures, single and multiple span bridges over waterways, roadways, interstate highways, and railroads, as well as a variety of steel trusses, stone and masonry arches, precast concrete boxes/arches/frames, timber, steel and pre-stressed concrete girders. We regularly incorporate staged techniques into our designs to maintain traffic during construction. As a multidisciplinary engineering firm, we have the ability to coordinate survey, geotechnical engineering, utilities, wetlands, hydrologic/hydraulic engineering, roadway design, maintenance and protection of traffic, permitting, property impacts, and public outreach activities in order to develop designs and repairs that protect the environmental integrity of the location and bring the project to a successful conclusion.

Public Outreach and Participation

All of our projects require client engagement at various levels, and oftentimes community outreach on behalf of our clients. Our professionals are skilled facilitators and sensitive to our clients' concerns.

We focus on clear communication and collaboration throughout the project and have extensive experience in scheduling meetings, preparing presentations, meeting agendas, and reports, as well as making presentations that facilitate understanding and consensus. We also have significant experience organizing and facilitating charrettes and workshops. We have participated in numerous stakeholder, public information, and Planning and Zoning meetings for corridor planning studies, parking studies, traffic calming projects and land use applications for private development projects. We excel at collaboration between private business and public agencies. We understand the importance of sharing study objectives with the public, soliciting valuable input on their concerns, and building consensus in order to develop preferred alternatives.

Our professionals live and work in the communities we serve. They understand the local conditions and challenges these communities face and are personally vested in developing cost-effective, long-term solutions that add value to the community. Because of their keen understanding of the ramifications to the community, they can easily identify key points that resonate with their audience and are very successful in obtaining public consensus.



Public Involvement and Early Coordination
Keeping the public and other key stakeholders involved early in project development creates buy-in and understanding, and a smoother project process. For a Sidewalk Study in Stowe, VT – a VTrans MA project – our team presented at three public meetings to communicate the Town's goal of a safe and comfortable passage for pedestrians through the sidewalk network that extends through Stowe.

Municipal Plan Reviews and RFP/RFQ Preparation

Fuss & O'Neill provides plan review services for Planning Boards for municipalities. We have extensive experience in applying not only a municipality's Regulations and Ordinances to the application under review, but also State and Federal regulatory provisions, permitting requirements, and generally-accepted engineering standards. Fuss & O'Neill has provided all levels of construction inspection services associated with Planning Board peer-reviewed and approved projects, as well as large-scale public works construction projects with water, sewer, drainage, and roadway construction elements using public and/or private funding sources. We have provided resident engineering services for multiple sidewalk construction projects where adherence to ADA requirements was critical to the completion and acceptance of the project. We have performed plan review services to many municipalities across New Hampshire, including Hudson, Merrimack, Plaistow, Goffstown and Chichester.

Relevant Project Examples

Fuss & O'Neill has extensive internal design and engineering capabilities, and collectively we have a thorough knowledge of the VTrans process. We work with municipalities across the state on projects that help improve and preserve critical infrastructure. On subsequent pages, you will find brief examples of project experience that includes a summary of our experience, and client contact information.

Castleton Corners – Route VT 4A and VT 30 Sidewalks

Castleton, VT

Fuss & O'Neill was selected as the preferred consultant from the pre-qualified list of At-The-Ready firms to act as Municipal Project Manager for this sidewalk design and construction project.



This project is currently in the final design and contractor solicitation phase. Our team has been assisting the Town with public awareness for the project, including door-to-door notifications and public hearings. Fuss & O'Neill staff has also reviewed bid documents and coordinated with the design engineer and VTrans personnel to keep the project on track for construction.

Client Contact: Michael Jones, Castleton Town Manager, Road and Police Commissioner

802.468.5319, manager@castletonvt.org



Dover Valley Trail Segment A STP BP14 (1)

Dover, VT

Dover, VT

Fuss & O'Neill worked on behalf of the Town of Dover, VT and acted as a liaison between the Town, VTrans, Project Consultants and Contractors.

An extension of a sidewalk from Dorr Fitch Road to a shopping plaza along Route 100. The walk was proposed to cross the North Branch of the Deerfield River with a pedestrian bridge. Fuss & O'Neill was selected by Dover to provide Municipal Project Management. Throughout the project, we monitored the project schedule and coordinated with the project consultants and contractor and the Town. Fuss & O'Neill assisted the Town with the procurement of a Design Engineer and is working with local landowners to obtain easements.

Client Contact: Eric Durocher, Economic Development Director, Town of Dover, VT,

802.464.5100 x105, econdev@doververmont.com

Third Party Inspections and Reviews

Lebanon, NH

Fuss & O'Neill has provided third party inspections and reviews for the City of Lebanon, on a variety of projects over the last few years. As third party reviewers, our team reviews the work of other engineers and contractors, as we did for the Rogers House parking lot construction project (pictured right.)



Our projects have ranged from construction observation projects, to inspection services at industrial sites, and drainage reviews.

Client Contact: Brian Vincent, PE, City of Lebanon, NH, 603.448.3112 x1515, brian.vincent@lebanonnh.gov



VT113 Pedestrian Pathway Construction Inspection

Thetford, VT

Fuss & O'Neill provided construction inspection services to the Town of Thetford along VT Route 113. This project was developed through the VTrans MAB program and was managed locally.

The end goal of this project was to construct trailhead parking at the Thetford Elementary School, and extend the trail along VT113 through the school parcel and extending to the library. On this project, construction included a new aggregate surface pedestrian path, construction of curbing, crosswalks, detectable warning surfaces, landscaping and a pedestrian bridge.

Fuss & O'Neill had a resident engineer on-site daily to review construction activities and to coordinate with contractors, utility companies, and the general public. We worked closely with the Town, VTrans and the Two Rivers-Ottawaquechee Regional Commission to deliver this project.

Client Contact: Rita Seto, Two Rivers-Ottawaquechee Regional Commission, 802.457.3188, rseto@trorc.org

US Route 7, Segment 6 Roadway Reconstruction

Brandon, VT

Fuss & O'Neill provided the conceptual, preliminary, Right-of-Way, and final design of this one-mile-long complex urban VTrans Municipal Assistance (MA) project. We worked with the Town and local groups to incorporate input in order to best meet the community's needs.



This project included the complete roadway design including streetscape, landscape design, development of traffic control plans, design of a comprehensive closed drainage system, replacement of sewer and water systems, utility relocations, permitting, and the development of contract plans and specifications. We designed the temporary traffic control plans to accommodate two lanes of traffic during construction to minimize the impacts to existing landscape features and to maintain the overall feel of the downtown area during construction. During construction, we responded to contractors' request for information and design assistance for unforeseen circumstances such as a deteriorating bridge deck. Our team has worked on all six segments of the Pittsford-Brandon corridor over the last 20+ years, with Segment 6 winning a prestigious ACEC-VT Grand Award in 2021.

Client Contact: David Atherton, Town Manager, Town of Brandon, VT, 802.247.3635, datherton@townofbrandon.com



Williston Road Multi-Use Facility

South Burlington, VT

The City of South Burlington has been working towards creating a City Center District with an efficient transportation network that supports pedestrians, cyclists, and public transportation while accommodating automobiles.

The project is located between Dorset Street and Midas Drive and there is a significant amount of vehicular traffic and narrow shoulders that make this section of road undesirable for many bicyclists. Fuss & O'Neill is collaborating with the City to design a paved multi-use facility with a seven-foot-wide landscaped area with pedestrian level lighting, and a twelve foot wide concrete facility suitable for pedestrians and bicyclists of all mobilities. The multi-use facility, pedestrian level lighting, and landscaping improvements will enhance the attractiveness of the area from a "typical" city street to an inviting multimodal environment designed to accommodate all users. As part of the design, Fuss & O'Neill completed infiltration testing and groundwater monitoring to support our stormwater treatment design for this MS4 community. Construction anticipated in 2024.

Client Contact: Ilona Blanchard, South Burlington, 802.846.4101, IBlanchard@southburlingtonvt.gov

VT108 Drainage Improvements

Bakersfield, VT

As part of Fuss & O'Neill's 0.65-mile full depth reclamation project through the village of Bakersfield, our team designed extensive drainage improvements that included closed drainage and stormwater treatment.



The project also included new ADA compliant sidewalk, aerial utility relocations, water line modifications, coordination and oversight of video inspections and subsequent subsurface utility mapping efforts, and erosion prevention and sediment control design. We presented the project at the Public 502 hearing and Construction was completed in 2021.

Client Contact: Bruce Martin, VTrans, 802.595.9653, bruce.b.martin@vermont.gov



US 2/VT 314 Intersection Improvements

South Hero, VT

Fuss & O'Neill, in conjunction with the South Hero Selectboard, developed alternatives that sought to improve vehicular and bicyclist safety through the US/VT 314 intersection which is a direct route from the Lake Champlain Ferry to US 2. This complicated intersection project involved the addition of a left turn lane on US 2 for vehicles turning on VT 314.

The improvements utilized a raised apron that accommodates commercial truck turning movements and discourages passenger vehicles from rolling through the intersection. The ferry departs about every 15 minutes with a significant number of commercial vehicles, so two-way traffic had to be maintained at all times. The platoons of traffic generated by the ferry and a box culvert replaced just 300 feet from the intersection complicated the temporary traffic control design. Fuss & O'Neill provided public outreach and stakeholder meetings, development of intersection alternatives, preliminary and final design, Right-of-Way plan development and support, and stormwater permitting. In addition, Fuss & O'Neill provided environmental services, including pre-characterization scope development, permitting, and client and regulator coordination. We performed Phase I and Phase II Environmental Site Assessments (ESA) based on recommendations from the Vermont Department of Environmental Conservation Sites Management Section. These evaluations helped us evaluate the history of environmental conditions in the vicinity of the project site, and then perform soil testing/sampling for VOCs; groundwater sampling; development of specifications, soil, and groundwater management requirements; and evaluation of cut fill volumes and disposal options. Construction was completed in 2022.

Client Contact: Michael LaCroix, VTrans, 802.371.9528, michael.lacroix@vermont.gov

VT15 and Browns Trace Road Improvements

Jericho, VT

Fuss & O'Neill prepared the design for a roadway reconstruction and widening of approximately 0.3 miles of Route 15 to address a growing trend in westbound rear-end crashes on VT Route 15, and to increase visibility for drivers.



As part of widening, our team designed a new left-turn lane and installed a signal at the intersection in order to improve safety. A closed drainage system and bituminous curbing was installed to mitigate existing erosion issues and to separate offsite flows from roadway runoff for stormwater treatment. An existing box culvert was replaced and upsized to accommodate extreme storm events and mitigate existing flooding issues. Fuss & O'Neill completed public interaction for the project, including coordination with affected property owners, meetings with Town and regional officials, and public presentations. We provided VTrans with a drainage model to appropriately size the box culvert and downstream channel and completed the traffic analysis to provide one-way alternating traffic with a temporary signal for the installation of the box culvert. Fuss & O'Neill also completed the traffic signal design. Project was completed in 2020.

Client Contact: Erin Parizo, PE, VTrans, 802.279.1709, erin.parizo@vermont.gov



VT 131 Roadway Improvements

Cavendish-Weathersfield, VT

As part of this 9-mile pavement reclamation project, Fuss & O'Neill worked with the Town of Cavendish and VTrans to design a relocation for a sewer impacted by construction of a new box culvert to replace the existing undersized dry laid stone box culvert.

The project consisted of cold planing, reclaiming, and paving 9-miles of VT 131 located between VT 103 and VT 106. Also included was the design of a slope stabilization with a soil nailed retaining wall, ledge removal, riverbank restoration, new drainage, underdrain, signing and guardrail. The box culvert and municipal sewer replacement were replaced within the 72-hour window specified in the contract documents. Construction was completed in 2021.

Client Contact: Brandon Kipp, VTrans, 802.224.6110, brandon.kipp@vermont.gov

Airport Drive and Kennedy Drive Stormwater Improvements

South Burlington, VT

Fuss & O'Neill completed the Stormwater Scoping Report for Airport Drive to develop stormwater improvements to manage 18.35 acres of runoff.



The Airport Drive stormwater treatment system is an underground infiltration system located on vacant lots owned by the Burlington International Airport. The Kennedy Drive improvements are a retrofit of the existing detention pond into a gravel wetland. Kennedy Drive is located just downstream of the Airport Drive system and will collect additional runoff from Williston Road via a diversion pipe to maximize treatment and detention of runoff. The addition of stormwater treatment along Airport Drive reduces the flow to Kennedy Drive requiring close coordination between the two projects.

Client Contact: Dave Wheeler, City of South Burlington, VT, 802.658.7961, dwheeler@southburlingtonvt.gov



Stormwater Scoping Study

Bridport, VT

Fuss & O'Neill is completing a scoping study to evaluate the replacement of twin 72-inch twin corrugated metal pipes (CMPs) that carry the East Branch Dead Creek under Middle Road in Bridport, VT. The area is prone to flooding and the road is frequently overtopped due to the undersized pipes.

The study evaluated three potential replacement structures to improve the hydraulic capacity of the crossing, as well as improve the roadway to meet current safety standards, while also balancing replacement costs and impacts. The project followed VTrans' Project Definition Process. An initial public meeting was held to identify the Town's project goals, objectives, and concerns, and to define the Purpose and Need for the project. Fuss & O'Neill utilized this information to evaluate replacement alternatives that meet the needs of the community. Three replacement alternatives were evaluated based on a variety of criteria including hydraulic capacity, utility impacts, Right-of-Way impacts, environmental and cultural resource impacts, and cost. These alternatives were presented at a second public meeting where the advantages and disadvantages of each alternative were provided to assist the Town in identifying their Preferred Alternative to moved forward into design. A scoping report was written to compile all the gathered information and present the Town's Preferred Alternative. The report is currently under review.

Client Contact: Tim Howlett, Bridport Selectboard Chair, 802.758.2483, twhowlett@yahoo.com

Pedestrian Accessibility Scoping Study

Pawlet, VT

VT 30 in Pawlet consists of residential, public and commercial properties that do not have safe or adequate pedestrian accommodations.



Fuss & O'Neill conducted public meetings which included the Town, RRPC and VTrans to solicit input from the community and based on feedback prepared several alternatives. The Town was able to use the scoping study submitted in September 2022 to secure a grant from VTrans Municipal Assistance Section to pursue the design of a sidewalk improvement project.

Client Contact: Devon Neary, Rutland Regional Planning Commission, 802.775.0871, devon@rutlandpc.org



Munger Street Bicycle Scoping Study

New Haven, VT

Fuss & O'Neill is developing a scoping study to identify alternatives, issues, and costs, as well as provide recommendations related to construction of a shoulder widening project along Munger Street in New Haven.

This project is being funded in part by the Federal Highway Administration and the Town of New Haven, through the Vermont Agency of Transportation Municipal Assistance Section. The project was identified in the Triangle Bike Loop Master Plan as part of a preferred route between Middlebury and Bristol, as currently, Munger Street does not meet the required Bicycle Level of Traffic Stress 2 standards since it does not have a shoulder. Our team is identifying and prioritizing improvements, ensuring local support through public involvement, and will complete a preliminary cost estimate for construction.

Client Contact: Mike Winslow, Addison County Regional Planning Commission, 802.578.9999, mwinslow@acrpc.org

Key Personnel Overview

Every project we work on requires a team effort. For this VTrans Municipal Project Manager contract, we have assembled professionals that understand your development process and project goals, and are ready to work with you to develop comprehensive solutions. Resumes for all key personnel follow.



Philip Forzley, PE
Principal-in-Charge

Phil is the White River Junction, Vermont Office Manager, a Vice President at Fuss & O'Neill, and will serve as Principal-in-Charge for this contract. Phil has more than 35 years of consulting experience, and will allocate the appropriate technical resources for every assignment of this contract.



Patricia Shedd

Municipal Project Manager

Patricia will serve as Program Manager for this contract. When a task order is assigned, Patricia will work with VTrans to understand its requirements to ensure that the right personnel work on the project. Patricia has been working exclusively for VTrans since 1998, and nobody has a better understanding of the VTrans process.



Daniel Monette, PE

Municipal Project Manager

Daniel is a civil engineer based in our White River Junction office. Having worked with many public clients, Dan has strong knowledge in municipal infrastructure, utility design, environmental engineering, site design, roadway design, heavy civil construction projects, and land use permitting. He will serve as a Municipal Project Manager.



David Munro, PE

Municipal Project Manager

Dave has been a tremendous asset on VTrans projects, and will serve as a Municipal Project Manager for this contract. He will work to deliver the highest level of quality and constructability on every project. Dave has been working exclusively for VTrans since 1997, and has an exacting understanding of the VTrans process.



Joshua Robinson

Municipal Project Manager

Josh will serve as a Municipal Project Manager on this contract, focusing on environmental services. A resident of Bridport, Josh has provided environmental services on a number of projects, including the direction of a Phase I Environmental Assessment for a roadway project in South Hero.



Justin Dechen, PE

Municipal Project Manager

Justin will serve as a Municipal Project Manager on this contract, as he will lead and manage projects with significant water and wastewater requirements. With more than 20 years of experience, has extensive experience with control, treatment, and distribution projects for water and wastewater industries. A Springfield resident, Justin is committed to improving Vermont's infrastructure.



Nicole Fox, PE

Roadway Design and Transportation

A transportation engineer with more than 20 years of relevant experience, Nicole will provide roadway design and transportation insight and support. She is the founder of our firm's Active Design Group. Her specialty is bicycle, pedestrian and trail projects, as she managed the Delaware and Hudson Rail Trail project in Southwestern Vermont. Nicole has also managed scoping studies in towns like Pawlet, Stowe and Castleton.



Kristen Hayden, PE

**Water and Natural Resources/
Permitting**

Kristen has a extensive experience designing stormwater and roadway projects throughout New England. She has worked with State Departments of Transportation, including having helped the Rhode Island DOT develop their Stormwater Manual. She completed stormwater design for projects in Lyndon and South Burlington.



Linda Greer, PE, PTOE

**Community Development and
Traffic**

Originally a roadway engineer, Linda collaborates with clients and Fuss & O'Neill's transportation and community development teams to implement traffic control plans that work. Linda led the traffic planning and design for complex traffic control designs in Royalton and Berlin.



Robert Montgomery

**Environmental/Building and
Hazardous Waste**

Rob has a broad background in environmental services spanning more than 20 years. He performs hazardous waste characterization and sampling, conducts Indoor Air Quality (IAQ) assessments, and Phase I and II Environmental Site Assessment studies including the oversight of drilling and excavation activities. He is also experienced in the management of Brownfield site work, and the development and management of PCB related site activities.

SECTION F

Resumes

Members Advantage Community Credit Union Green Infrastructure, Site Design, Permitting, and Construction – White River Junction, VT





Philip Forzley, PE

Principal-in-Charge

“As far as engineers go, I’m a serious people person. I love learning about clients’ needs, figuring out the best path to the solution, putting a team together, and executing the work to fulfill that need.”

pforzley@fando.com

802.698.0479

EDUCATION

BS, Biology - 1981
University of Connecticut
BS, Civil Engineering - 1984
University of Connecticut
MS, Environmental Engineering -
1997 University of Connecticut

LICENSES & REGISTRATIONS

Professional Engineer VT
Professional Engineer NH
Professional Engineer MA
Professional Engineer CT

PROFESSIONAL AFFILIATIONS

American Soc of Civil Eng
Assoc of State Floodplain Mgrs
New England Water Env Assoc
Water Environment Federation
Assoc State Dam Safety Offcls

EXPERIENCE

39 years Professional Experience
19 years with Fuss & O'Neill

Out of our White River Junction office, Phil manages design teams and actively participates in project design. He has completed a variety of civil and environmental engineering projects, which include stormwater management, hydrology and hydraulic structures design, dam engineering, site planning and engineering, wastewater treatment and disposal, construction services, and regulatory compliance. He provides services to local and state government entities, watershed associations and other non-profits, educational and other institutional clients, industries, and land developers.

Phil’s primary strength is management of projects that involve multiple disciplines. He coordinates design services and partners with our clients to help them meet their project objectives, which typically include budget, schedule, and high quality deliverables.

REPRESENTATIVE PROJECTS:

Municipal Project Manager Services for Route 4A and Route 30, Castleton, VT

Burlington High School PCB Soil, Building Materials, Air Investigation, and Third-party Oversight, Burlington School District, Burlington, VT

Site Design and Drainage, Vermont VA Federal Credit Union, White River Junction, VT

Upper Pond Dam Improvements, Windsor, VT

Wentworth Road Culvert Replacement, Walpole, NH

Municipal Engineering Services, Walpole, NH

Stormwater Management and Beach Repairs, Chesterfield, NH

Soil, Groundwater and Geotechnical Evaluations, Town of Wolfeboro, NH

MADCR On-Call Engineering Services, Various Locations, MA

CT DEEP On-Call Engineering Services, Various Locations, CT



Patricia Shedd

Municipal Project Manager

“I engineer a cost effective solution to improve the safety and mobility in the community regardless of the mode of transportation. I also volunteer with Engineers Without Borders to bring clean and plentiful water supply to villages. Whether it’s local or thousands of miles away, there is no better feeling than being part of a team that has improved the lives of others.”

pshedd@fando.com

603.222.3482

EDUCATION

AS, Civil Engineering Technologies
- 1986 Vermont Technical College

PROFESSIONAL AFFILIATIONS

ACEC - VT
Women in Transportation (WTS)
Engineers Without Borders - NH
Professional Chapter

EXPERIENCE

37 Years Professional Experience
24 years with Fuss & O'Neill

Patricia is the Highway Team Lead, Associate, and a shareholder, located in our Manchester, New Hampshire office, and has been involved in a diverse range of traffic and transportation projects as well as survey and civil/site designs. She is responsible for the project planning, scheduling, client coordination, subconsultant coordination, and project overview for a variety of VTrans projects. Patricia has developed close working relationships with personnel in VTrans’ Highway, Safety & Design, Municipal Assistance Bureau, Pavement Management and Right-of-Way Sections.

Patricia has worked on all aspects of roadway design including horizontal geometry, vertical alignments, guardrail, superelevation, drainage, signing, pavement markings, EPSC plans, temporary traffic control plans, developing Right-of-Way plans, developing cost estimates and obtaining stormwater discharge permits. She has presented at Selectboard meetings, Public 502 Hearings, the Act 250 Hearings, and Necessity Hearings.

REPRESENTATIVE PROJECTS:

Soil Nailed Wall Constructability Review, At-The-Ready (ATR) Consultant Engineering Services, Highgate, VT

US Route 2/VT Route 314 Intersection Improvements, VTrans, South Hero, VT

US Route 7 over Furnace Brook, VTrans, Pittsford, VT

Williston Road Shared-Use Path and Sidewalk Project, At-The-Ready (ATR) Consultant Engineering Services, City of South Burlington, VT

Kennedy Drive Stormwater Pond 7, At-The-Ready (ATR) Consultant Engineering Services, City of South Burlington, VT

US Route 5 Full Depth Reconstruction, VTrans, Lyndon, VT

VT Route 131 Full Depth Reclamation, Cavendish, VT

US 7 Improvement, VTrans Pittsford-Brandon (Segments 1-5), VT

US 7 Improvements, Town of Brandon (Segment 6), VT

VT 100 Sidewalk Replacement Study, Stowe, VT



Daniel Monette, PE

Municipal Project Manager

“Civil Engineering is a noble profession, requiring ingenuity and creativity to produce something beneficial to society. Science and mathematics are required to answer complex questions; however, on-site, real world experience teaches us to be practical in our designs.”

dmonette@fando.com

802.698.0476

EDUCATION

BS, Civil Engineering - 2008
University of Vermont

LICENSES & REGISTRATIONS

Professional Engineer MA
Professional Engineer NH
Professional Engineer VT
Septic Designer NH
Septic Designer VT

PROFESSIONAL AFFILIATIONS

American Soc of Civil Eng
Assoc State Dam Safety Offcls

EXPERIENCE

13 Years Professional Experience
8 years with Fuss & O'Neill

Dan is a Project Engineer and Designer working out of Fuss & O'Neill's White River Junction, VT office. He has construction engineering and field experience on widespread projects throughout New England. This experience, combined with technical design skills, enables him to prepare complicated utility and site design plans for a diverse range of projects. Additionally, Dan has expertise in the development of permitting packages and bid documents for submittal to federal, state, and local regulatory agencies. These efforts have led him to develop a strong working knowledge in municipal infrastructure, utility design, environmental engineering, civil/site design, roadway design, heavy civil construction projects, and land use permitting.

REPRESENTATIVE PROJECTS:

Castleton Corners – Route VT 4A and VT 30 Sidewalks, STP EH10(4), At-The-Ready (ATR) Consultant Engineering Services, Castleton, VT

Thetford Pedestrian Pathway STP EH09(10) and Thetford Village Pedestrian Improvements STP 0180(10) (constructed simultaneously), At-The-Ready (ATR) Consultant Engineering Services, Thetford, VT

Valley Trail MPM Services, At-The-Ready (ATR) Consultant Engineering Services, Dover, VT

Marbleway Path STP BP21(14), At-The-Ready (ATR) Consultant Engineering Services, West Rutland, VT

Goose Pond Road Reconstruction, Lyme, NH

Sidewalk Design, School Street and Beech Street, Newport, NH

Cheney Street Sidewalk Design, Newport, NH

Ray School Site Design, Parking Areas, Site Walkways, Site Access, Site Utilities and Drainage, Hanover SAU70, Hanover, NH

River Road Feasibility Study and Roadway Relocation, Lyme, NH



David Munro, PE

Municipal Project Manager

“It is such a rewarding experience to see my ideas on paper constructed in the real world and in knowing that I have helped to solve a problem and, ultimately, improved public safety, accessibility, and the everyday travel experience.”

dmunro@fando.com

603.222.3458

EDUCATION

BS, Civil Engineering - 1994
University of Vermont

LICENSES & REGISTRATIONS

Professional Engineer VT
Professional Engineer NH

PROFESSIONAL AFFILIATIONS

NH Society of Professional
Engineers

EXPERIENCE

27 years Professional Experience
25 years with Fuss & O'Neill

David is a Senior Transportation Engineer and has extensive knowledge of AASHTO and state-specific design standards and is responsible for ensuring quality submittals. He does this by providing continual design guidance and support to the project engineers working on highway design projects and by thorough review of plans and documents before submittal.

Dave possesses exceptional MicroStation and InRoads skills and is directly responsible for maintaining and enforcing CAD standards. Dave has worked on all aspects of roadway design including scoping, horizontal geometry, vertical alignments, superelevation, pavement design, drainage, stormwater treatment, utility coordination, guardrail layout, right-of-way plans, pavement marking, and signing. His responsibilities have encompassed all aspects of the design and production of highway plans including typical sections, plans, profiles, cross sections, quantity take-offs, cost estimating and contract documents.

REPRESENTATIVE PROJECTS:

US Route 2/VT Route 314 Intersection Improvements, VTTrans, South Hero, VT

VT Route 108 Drainage Improvements, VTTrans, Bakersfield, VT

US Route 5, Full Depth Reconstruction, VTTrans, Lyndon, VT

US Route 7 Improvements, Brandon, VT

VT Route 15 Intersection Improvements, VTTrans, Jericho, VT

Lower Main Street Sidewalk, Stowe, VT

Interstate Renumbering Signing, Statewide, VT

US Route 7 Pownal-Manchester Signing, VT

Signalized Intersections Wallingford, Clarendon, and Rutland Town, VT

South Street Improvements, South Hero, VT

I-91/I-93 Safety Improvement Projects, VTTrans, Various Locations, VT



Joshua Robinson

Municipal Project Manager

“The best part of my job is contributing to the transformation of a blighted parcel into something that protects human health and the environment and aids in the revitalization of a community.”

jrobinson@fando.com

401.533.5963

EDUCATION

BA, Environmental Studies - 2013
Saint Lawrence University

LICENSES & REGISTRATIONS

Asbestos Inspector VT

EXPERIENCE

10 years Professional Experience
5 years with Fuss & O'Neill

Josh is a Senior Environmental Scientist in Fuss & O'Neill's Environment and Facility Services Business Line in Vermont and New Hampshire. He has managed and served as a Project Scientist on a wide range of environmental projects throughout New England and New York, including those on Brownfield sites, for residential and commercial developments, as part of roadway and transportation improvements, and at industrial facilities. He has participated in and overseen geotechnical analyses, environmental investigations, remedy implementation, project planning, and permitting activities. He has experience working with regulators, project stakeholders, subcontractors, as well as both internal and external project teams to provide efficient and thorough solutions for private entities, municipal clients, and non-profit organizations.

REPRESENTATIVE PROJECTS:

Valley Trail MPM Services, Dover, VT

Linear Roadway Construction Environmental Investigation and Permitting, VTrans, South Hero, VT

VT Route 108 Drainage Improvements and Environmental Services, STP SCRP(11), VTrans, Bakersfield, VT

Burlington High School PCB Soil, Building Materials, Air Investigation, and Third-party Oversight, Burlington School District, Burlington, VT

Cycle Track & Pedestrian Improvements STP BP17(9), South Burlington, VT

Middle Road Culverts Scoping Study, Bridport, VT

Lead Investigation, VTrans, Fair Haven, VT

40 Fountain Street Hazardous Materials Management, Nordblom, Providence, RI

Environmental Services for Site Redevelopment, I-195 Redevelopment District, Providence, RI



Justin Dechen, PE

Municipal Project Manager

“My work allows me to implement creative solutions to environmental issues. I enjoy the engineering process of working with the team and clients, all towards the same goal.”

jdechen@fando.com

860.783.4771

EDUCATION

BS, Aeronautical Engineering
- 2001 Rensselaer Polytechnic
Institute
MS, Civil Engineering - 2014
Norwich University

LICENSES & REGISTRATIONS

Professional Engineer NH, VT, CT,
RI, NY, IA, ID

PROFESSIONAL AFFILIATIONS

Construction Documents
Technologist (CDT)
Member of ASCE

EXPERIENCE

21 years Professional Experience
1 year with Fuss & O'Neill

Justin is a Project Manager in our Water and Natural Resources business line. He has a strong technical background in engineering and construction for water infrastructure projects throughout the United States and international market. Justin has extensive experience with control, treatment, and distribution projects for water and wastewater industries. He has been the Subject Matter Expert for a national engineering firm on Sluice, Slide, Flap and Bulkhead water control gates.

REPRESENTATIVE PROJECTS:

Water System Design, Town of Lyndon, VT

Wastewater Design, Village of Lyndonville, VT

Soil Nailed Wall Constructability Review, At-The-Ready (ATR) Consultant Engineering Services, Highgate, VT

School Street to Main Street Stormwater Design, Walpole, NH

Wason Road Off Site Improvement Plan Review, Hudson, NH

Water System Upgrade, Pine Valley Plantation Cooperative Corporation (PVPCC), Belchertown, MA

Old Providence Road Climate resilience, Swansea, MA

Utility Design, Large Government Contractor North Kingston, RI

Wastewater Treatment Plant Review, Town of Peru, NY

The following work was performed prior to joining Fuss & O'Neill:

Wastewater Infrastructure Improvements, Pittsford, VT



Nicole Fox, PE

Roadway and Transportation Projects

"My focus in transportation engineering is to use creative solutions to improve safety and mobility for all modes of travel. I enjoy solving puzzles and working out the best design solutions for challenging situations. I see what we do as a way to serve our communities while fulfilling client needs."

nfox@fando.com

603.222.3480

EDUCATION

BS, Civil Engineering - 1999
University of Florida

LICENSES & REGISTRATIONS

NHDOT LPA Labor Comp NH
Professional Engineer ME
Professional Engineer NH
Professional Engineer VA
Professional Engineer VT

PROFESSIONAL AFFILIATIONS

Women in Transportation (WTS)

EXPERIENCE

23 Years Professional Experience
13 years with Fuss & O'Neill

Nicole is a Project Manager with experience in all phases of transportation design and planning. Her practice includes rail trail design, new location trails, bicycle and pedestrian planning and scoping, as well as sidewalks and on-road bicycle lanes and cycle tracks.

Nicole is a skilled listener and excels at fostering open communication between clients, agencies, and other consultants. As a good communicator and team leader, she has excellent project management skills and experience managing municipal and state projects.

REPRESENTATIVE PROJECTS:

Pedestrian Accessibility Scoping Study, At-The-Ready (ATR) Consultant Engineering Services, Pawlet, VT

TAP TA20(9) Pedestrian Scoping Study, At-The-Ready (ATR) Consultant Engineering Services, Castleton, VT

Williston Road Shared-Use Path and Sidewalk Project, At-The-Ready (ATR) Consultant Engineering Services, City of South Burlington, VT

Sidewalk Replacement Study, Stowe, VT

VT 100 and West Hill Road Scoping Study, Stowe, VT

VT 100 and Moscow Road Scoping Study, Stowe, VT

Cornwall-Middlebury VT 125 Scoping Study, VTrans, Cornwall & Middlebury, VT

Community Trail, Dover, NH

NH 11 and Central Street Preliminary Design, NHDOT, Farmington, NH

VT 100 Sidewalk Design, Stowe, VT

Sidewalk Improvements, Jaffrey, NH



Michael Haley, PE, LSIT

Roadway and Transportation Projects

“I’ve always been interested in the how and why of things; How does this work? Why does it work? Why does it *not* work? Is there a more efficient way to make it work better? Being an engineer lets me ask those questions. The process of developing solutions is fun and it is very satisfying to be able to solve those questions over the life of a project.”

mhaley@fando.com

603.222.3479

EDUCATION

BS, Civil Engineering - 2002
Clarkson University

MS, Civil Engineering - 2006
California State University-Los Angeles

LICENSES & REGISTRATIONS

Professional Engineer VT
Professional Engineer NH
Professional Engineer CA
Land Surveyor in Training NH

PROFESSIONAL AFFILIATIONS

NH Society of Professional Engineers
National Society of Professional Engineers

EXPERIENCE

19 years Professional Experience
14 years with Fuss & O'Neill

Mike has nearly 20 years of experience designing a variety of highway and site development projects ranging from bridge approaches, paving and overlay to full depth reconstruction to curb and sidewalk projects. His primary area of expertise is in the development of 3D roadway design models, but he is well versed in all aspects of roadway design. In addition, Mike serves as Fuss & O'Neill's Work Zone Resource Officer on all VTrans projects.

Mike's career path has taken him from New York to California and back to New England where his focus has been on Vermont highway design projects since 2012. He has served as a resident engineer on a number of construction projects which has further enhanced his design skills. Mike is known for being a reliable problem solver who has a commitment to producing quality designs for clients.

REPRESENTATIVE PROJECTS:

- US Route 7 over Furnace Brook, VTrans, Pittsford, VT
- US 2/VT 314 Intersection Safety Improvement Project, South Hero, VT
- US Route 5 Full Depth Reconstruction, VTrans, Lyndon, VT
- US 2 Cabot-Danville Right-of-Way, VT
- VT Route 100 (Lower Main Street) Sidewalk Project, Stowe, VT
- Williston Road Shared-Use Path and Sidewalk Project, At-The-Ready (ATR) Consultant Engineering Services, City of South Burlington, VT
- South Street Improvements, South Hero, VT
- US 7 Improvements, Pittsford (segments 2, 3 & 4), Pittsford, VT
- VT 131 Cavendish-Weathersfield Reclamation, VT
- VT 11 Londonderry-Chester Reclamation, VT



Alan Vomacka, EIT

Roadway and Transportation Projects

“Engineering is all about continuous learning and improvement to me. I enjoy learning about how things work in the real world and being able to have an impact on the way areas are developed.”

avomacka@fando.com

603.222.3453

EDUCATION

BS, Civil Engineering - 2014
University of Rhode Island

LICENSES & REGISTRATIONS

Engineer In Training RI

EXPERIENCE

7 years Professional Experience
4 years with Fuss & O'Neill

Alan is an Engineer with our Transportation team in the Manchester, New Hampshire office. He works with our team to design roadway, water, sewer, drainage and stormwater treatment and perform quantity calculations, cost estimates and permit applications. His background in commercial and residential site design and development provides him with a unique perspective on our team.

Alan is proficient in MicroStation, InRoads, Connect, OpenRoads, HydroCAD, and AutoCAD Civil 3D.

REPRESENTATIVE PROJECTS:

Williston Road Shared-Use Path and Sidewalk Project, At-The-Ready (ATR) Consultant Engineering Services, City of South Burlington, VT

Kennedy Drive Stormwater Treatment, South Burlington, VT

Airport Drive Stormwater Treatment System Scoping Report and Final Design, South Burlington, VT

US Route 7 Improvements (Segment 2) Stormwater Treatment, VTrans, Pittsford, VT

Sewer Design, VTrans Roadway Reconstruction of US 5, Lyndon, VT

US Route 5 Stormwater Treatment, VTrans, Lyndon, VT

Wastewater Design, US 5 Town of Lyndon, VT

Water Design, US 5 Village of Lyndonville, VT

US Route 2 / VT Route 314 Intersection Safety Improvement Project, VTrans, South Hero, VT

US Route 7 over Furnace Brook, Bridge Replacement, VTrans, Pittsford, VT



Steven Goodwin

Roadway and Transportation Projects

"Transportation has always been a passion of mine. To me, it is not all about the destination. Getting there is half the fun."

sgoodwin@fando.com

802.698.0480

EDUCATION

AS, Civil Engineering - 2010
Vermont Technical College

EXPERIENCE

12 years Professional Experience
12 years with Fuss & O'Neill

Steve is an Engineering Technician in our Transportation department. He works primarily on highway design projects for State and Municipal clients. Steve is experienced in highway, signing and ROW design. He is responsible for creating horizontal and vertical alignments, superelevation, modeling, drafting all plans and details. He has become proficient in SignCAD and signing layout which benefits our signing projects as well as sign needs on our resurfacing, intersection and bridge projects. Steve is knowledgeable in the ROW process and is responsible for ROW plan production and is experienced in MicroStation, InRoads, SignCAD and Estimator.

To complement Steve's design experience, he enjoys construction inspection and monitoring, including preparation of daily work reports, progress meetings and ensuring the project is constructed in accordance with the plans and specifications.

REPRESENTATIVE PROJECTS:

US 2 Cabot-Danville Right-of-Way, VT

US 7 Colchester Exit 16 Right-of-Way, VT

Village Pedestrian Improvements Construction Inspection, Thetford, VT

US Route 4 Signing Project, VTrans, Fair Haven - Rutland Town, VT

Route 105 Resurfacing, VTrans, St. Albans-Sheldon, VT

US Route 2 / VT Route 314 Intersection Safety Improvement Project, VTrans, South Hero, VT

Williston Road Shared-Use Path and Sidewalk Project, At-The-Ready (ATR) Consultant Engineering Services, City of South Burlington, VT

US Route 7 Improvements (Segment 2), VTrans, Pittsford, VT

Pittsford Bridge Replacement, VTrans, Pittsford, VT

VT Route 10/VT Route 11/VT Route 106 Resurfacing, VTrans, Chester-Springfield, VT



Kristen Hayden, PE

Water and Natural Resources/Permitting

“My job allows me to combine my love of math and the great outdoors, which ensures that each roadway I design harmonizes both of these elements without compromise.”

khayden@fando.com

603.222.3474

EDUCATION

BS, Civil Engineering - 2002
University of Vermont

LICENSES & REGISTRATIONS

NHDOT LPA Labor Comp NH
LPA Certification NH
Professional Engineer NH

PROFESSIONAL AFFILIATIONS

Women in Transportation (WTS)

EXPERIENCE

20 years Professional Experience
11 years with Fuss & O'Neill

Kristen supervises and develops roadway and drainage designs for several large-scale highway projects. She has extensive experience in stormwater and roadway design for municipal and state projects and has an understanding of stormwater regulations in New England, while being proficient in MicroStation and InRoads.

Kristen has led design teams on projects utilizing her fully developed understanding of plan development combined with her technical background and practical experience she makes sound engineering decisions. She also has extensive experience in several states and multiple civil engineering disciplines and has participated in and guided projects from conceptual inception through contract plans.

REPRESENTATIVE PROJECTS:

Williston Road Shared-Use Path and Sidewalk Project, At-The-Ready (ATR) Consultant Engineering Services, City of South Burlington, VT

Kennedy Drive Stormwater Treatment, South Burlington, VT

Airport Drive Stormwater Treatment System Scoping Report and Final Design, South Burlington, VT

VT Route 102 over Paul Stream Bridge Replacement, Brunswick, VT

VT Route 131 over Mill Brook Culvert Rehabilitation, VTTrans, Weathersfield, VT

VT Route 15 at Browns Trace Intersection Improvements, VTTrans, Jericho, VT

US Route 5 Stormwater Treatment, VTTrans, Lyndon, VT

Widening Contract 14633H, I-93 Widening from Exit 5 to I-293 Stormwater Treatment, NHDOT, Salem-Manchester, NH

Linear Stormwater Manual, RIDOT, Statewide, RI



David Lewis, PE

Water and Natural Resources/Permitting

“Evaluating existing infrastructure for updated use is interesting since it often sheds light on how original designers and builders approached the initial problem. Now with the availability of improved materials, along with advances in design practice, allow us to offer different solutions for the current project.”

dlewis@fando.com

603.222.3457

EDUCATION

BS, Forest Resource Engineering
- 1988, State University of New
York College-Environment

ME, Construction Management
- 1999, State University of New
York College-Buffalo

LICENSES & REGISTRATIONS

NHDOT LPA Labor Comp NH
LPA Certification NH
Professional Engineer VT
Professional Engineer NH

EXPERIENCE

33 years Professional Experience
23 years with Fuss & O'Neill

David has decades of experience providing municipal, civil, and geotechnical engineering services for both public infrastructure and private development projects. Design and permitting work has included rural and urban roadway design, solid and industrial waste landfills, sewers, and pump stations. He has provided field consultation to owners, designers, and construction managers during both design and construction phases.

REPRESENTATIVE PROJECTS:

Lyndon Water Design, VTrans, Lyndonville Village, VT
Route 7 Bridge over Furnace Brook, Pittsford, VT
Village Pedestrian Improvements Construction Inspection, Thetford, VT
Route 131 Sewer Relocation, Cavendish, VT
Forest Street Bridge and River Street-Dorr Drive Bridge Replacement, VTrans and City of Rutland, VT
Segment 6 Water and Sewer Replacement, VTrans, Town of Brandon, and Brandon Fire District No. 1, Brandon, VT
Stormwater Sample and Inspection, Pelham, NH
South Main Street and Bay Road Utility Improvements, Town of Newmarket, NH
Granite Street Reconstruction, Manchester, NH
Central Square Sidewalk Reconstruction, Safe Routes to School, NHDOT and Town of Troy, NH
Drapers Corners Intersection Improvements, NHDOT and City of Claremont, NH



Leah Cromer, EIT

Water and Natural Resources/Permitting

"I've always loved being around water. I am grateful I get to work to improve and protect our water resources."

lcromer@fando.com

802.359.7277

EDUCATION

BA, Geology - 2015
Carleton College

MS, Water Resources Engineering
- 2021 Oregon State University

LICENSES & REGISTRATIONS

Engineer in Training OR

EXPERIENCE

2 years Professional Experience
1 year with Fuss & O'Neill

Leah is a Water Resources Engineer in Fuss & O'Neill's White River Junction office. While completing her Master's in Water Resources Engineering, Leah completed several hydraulic modeling projects, including a model of different drawdown scenarios for the removal of the Klamath River dams. Her modeling experience includes HEC-HMS, HEC-RAS, FastMECH, HydroCAD, and ArcGIS. At Fuss and O'Neill, she works on a variety of projects including hydraulic modeling for designing culvert replacements and dam removal scenarios, stormwater modeling, and emergency action plans.

REPRESENTATIVE PROJECTS:

Munger Street Bicycle Scoping Study, New Haven, VT
Holding Pond Dam Inspections, West Dover, VT
School Street to Main Street Stormwater Design, Walpole, NH
Stormwater Retrofit Plan; Dudley, MA
Barker Road Bridge Replacement; Pittsfield, MA
Little River Dam Removal and River Restoration Design; Haverhill, MA
Hop Brook Culvert Replacement, Belchertown, MA
Queensville Dam/Titus Pond Dam Feasibility Study, South Hadley, MA
Resilient Riverfront Renewal, Westerly, RI
Aquidneck Island Stormwater Treatment Unit Feasibility Study; Aquidneck Island, RI
Pierce's Detention Pond Dam Emergency Action Plan Development, Southbury, CT



Linda Greer, PE, PTOE

Community Development and Traffic

“Family summer vacations meant driving to Ohio to visit my grandmother, each time changing the route for different points of interest. Going from rural highways to metropolitan cities, I realized how roadways changed with traffic demand. Fascinated by traffic moving through the intertwining interstate junctions led me to a career that combines traffic and roadway design, always working to achieve roadway infrastructure to meet society’s changing needs.”

lgreer@fando.com

603.222.3475

EDUCATION

BS, Civil Engineering - 1997
North Carolina State University

LICENSES & REGISTRATIONS

NHDOT LPA Labor Comp
Professional Traffic Operations Engineer
Professional Engineer ME
Professional Engineer VT
Professional Engineer NH

PROFESSIONAL AFFILIATIONS

American Public Works Assoc
Inst Transportation Engineers
APWA NH Chapter
ACEC - NH
ACEC - ME
WTS-NH

EXPERIENCE

24 Years Professional Experience
8 years with Fuss & O'Neill

Linda leads Fuss & O'Neill’s Community Development Team based in the Manchester, NH office. She works collaboratively with municipalities and private developers to integrate her technical expertise to satisfy project requirements. Linda also has a strong history of working with State Departments of Transportation, taking projects from conceptual design through final construction plans. She also has a history of successfully delivering projects with timeline constraints to meet funding or construction schedules. The foundation of Linda’s career as a Roadway Engineer was built by combining traffic analysis with construction field experience. Linda’s specialty is her ability to develop comprehensive traffic control and maintenance plans on complex roadway, highway and bridge projects.

REPRESENTATIVE PROJECTS:

US Route 7, Segment 6, Traffic Signal Design, Brandon, VT

I-89 Exit 7 Traffic Control, Berlin, VT

VT 131 Traffic Control, Cavendish-Weathersfield, VT

US 5 Traffic Impact, Putney, VT

Route 118 over West Hill Brook, Montgomery, VT

Lyndon Intersection Improvement, Lyndon, VT

I-89, Exit 3 Traffic Control, Royalton, VT

Traffic Control Plan, Queen City Bridge, Manchester, NH

Signal Re-timing for Traffic Control Plan, Granite Street, Manchester, NH

BUILD and RAISE Grant Applications, Alternative Access to South Commercial Street, Manchester, NH

Dartmouth Hitchcock, Wellington Road, Manchester, NH



Robert Lupien

Community Development and Traffic

I love working on traffic projects because I get to help people get where they are going. Nobody likes to sit in traffic, and it's my job to develop and coordinate designs that work for all users.

rlupien@fando.com

603.222.3484

EDUCATION

BS, Civil Engineering - 2019
University of Connecticut

EXPERIENCE

4 years Professional Experience
4 years with Fuss & O'Neill

Robert is a Transportation Engineer that works for Fuss & O'Neill's Traffic Team in our Manchester, New Hampshire office. He provides designs and analyses for traffic signals, management plans, and traffic control on municipal, State and private projects throughout New England.

REPRESENTATIVE PROJECTS:

US Route 4 Signing Project, VTrans, Fair Haven – Rutland Town, VT

Pittsford Bridge Replacement, VTrans, Montpelier, VT

Royalton Deck Replacement, VTrans, Montpelier, VT

Cambridge-Belvidere STP FPAV(69), VTrans, Belvidere, VT

Alternative Access to South Commercial Street, BUILD Grant, Manchester, NH

Traffic Signal Plans, Cate Street Development, LLC and City of Portsmouth, Portsmouth, NH

Queen City Bridge Traffic Control Plan, Manchester, NH

Columbus/Summer Street Intersection Improvements, City of Rochester, NH

Flatley Traffic Study Plan Review, Merrimack, NH

South Elm Multifamily Residential Development, Jones Street Investment Partners, Manchester, NH



Jacob Fowler, EIT

Community Development and Traffic

“As a young student I enjoyed working with my hands and building things more than any other opportunity I had in a classroom. A career where I could continuously use my creativity and still be able to connect with real infrastructure and surroundings was a must for me, becoming an engineer was an easy fit.”

jfowler@fando.com

603.222.3465

EDUCATION

BS, Civil Engineering Technologies
- 2013
Wentworth Institute of
Technology

LICENSES & REGISTRATIONS

Engineer In Training NH

EXPERIENCE

10 years Professional Experience
8 years with Fuss & O'Neill

Jake is a Civil and Transportation Engineer in Fuss & O'Neill's White River Junction, Vermont office. He prepares roadway, sidewalk, grading, drainage and utility drawings to support scoping and design projects. He writes technical specifications, prepares construction cost opinions and assists with construction administration. Construction administration services have included construction observation, addressing contractor RFI and change orders and reviewing pay requisitions. He is highly proficient in AutoCAD and MicroStation.

REPRESENTATIVE PROJECTS:

- Munger Street Bicycle Scoping Study, New Haven, VT
- Pedestrian Accessibility Scoping Study, At-The-Ready (ATR) Consultant Engineering Services, Pawlet, VT
- TAP TA20(9) Pedestrian Scoping Study, At-The-Ready (ATR) Consultant Engineering Services, Castleton, VT
- Williston Road Shared-Use Path and Sidewalk Project, At-The-Ready (ATR) Consultant Engineering Services, City of South Burlington, VT
- US Route 5, VTrans, Rockingham-Springfield, VT
- High Risk Rural Road Signing Projects, VTrans, Statewide South Region
- VT Route 102 over Paul Stream, VTrans, Brunswick, VT
- US 7 Improvements, Brandon (Segment 2), Pittsford, VT
- VT 11 Improvements, Londonderry-Chester, VTrans, State of Vermont
- Culvert Replacement Project, Bridport, VT



Michael Delaney, EIT

Community Development and Traffic

"As an engineer I get to better the world around me and help people. What could be better than that?"

mdelaney@fando.com

860.533.5134

EDUCATION

BS, Civil Engineering - 2021
University of Vermont

LICENSES & REGISTRATIONS

Engineer-in-Training VT

EXPERIENCE

1 year Professional Experience
1 year with Fuss & O'Neill

Michael is a Civil Engineer in Fuss & O'Neill's White River Junction, Vermont office. Michael works on a variety of site and civil engineering tasks, including site design, stormwater management, road design, quantity estimation, permitting, and residential wastewater treatment system design.

Michael serves both public and private clients alike. Michael has valuable construction experience and has worked on municipal GPS asset management projects.

REPRESENTATIVE PROJECTS:

Parson's Hill Road to Castleton Corners Sidewalk, Castleton, VT

Highway Resurfacing, VTrans, Bennington, VT

I-89 4R Reclam and Shoulder Widening, NHDOT, Warner-Sutton, NH

Wilmot Center Road Residential Project, Elkins, NH

Wentworth Road Design and Permitting, Walpole, NH

Shoreland Permitting and Stormwater Management, Seth Kaufman, Canaan, NH

Bunker Road Residential Project, New London, NH

School Street to Main Street Stormwater Design, Walpole, NH

Timber Sale Road Surveys, USDA White Mountain National Forest Service, Lincoln Woods Trail, Lincoln, NH

Cluster 1-Drainage Improvements, Hilltop Place Building, New London, NH



Tia Williams

Community Development and Traffic

"As an engineer, I care about our future because we will be living here for the rest of our lives."

twilliams@fando.com

603.222.3472

EDUCATION

BS, Environmental Engineering
- 2020
Michigan Technological
University

LICENSES & REGISTRATIONS

OSHA 10

EXPERIENCE

2 years Professional Experience
<1 year with Fuss & O'Neill

Tia is a Civil Engineer working out of Fuss & O'Neill's White River Junction, Vermont office. Her background is in environmental engineering, and has performed field inspections across multiple engineering disciplines. Tia has experience in preparing design reports and construction plans, permitting, and cost estimating. She has an understanding of relevant software programs including AutoCAD and Civil 3D.

REPRESENTATIVE PROJECTS:

VTDEC PCB Sampling in Schools, Waite Heindel, Burlington, VT

Dam Engineering Services, Friends of Loon Lake, Croydon, NH

Lower Campus Phase I, Colgate University, Hamilton, NY

The following projects were completed with a previous employer:

Atherton Road Street Rehabilitation and Utility Replacement, Flint, MI

Water Supply Field Inspections, Flint, MI

Shorts Creek Drain Improvements, Saginaw County Department of Public Works, Saginaw, MI

Manhole Inspection, Buena Vista Charter Township, Saginaw County, MI



Robert Montgomery

Environmental/Building and Hazardous Waste

“Every project I work on is an opportunity to make it safer for my client and community. I take pride in my work knowing I am able to provide a safe solution.”

rmontgomery@fando.com

603.222.3455

EDUCATION

BS, Environmental Science - 1999
Johnson State College

LICENSES & REGISTRATIONS

Asbestos Project Monitor VT, NY
Asbestos Inspector VT, NY
Asbestos Project Designer VT, NH, NY
Asbestos Mgmt Planner VT
Lead Inspector VT
Mold Assessor NY

PROFESSIONAL AFFILIATIONS

Certified Indoor Environmentalist
Consultant
Indoor Air Quality Association

EXPERIENCE

21 years Professional Experience
< 1 year with Fuss & O'Neill

Rob is a Senior Project Manager with a broad background in environmental services spanning more than 20 years. He has provided a single point of contact for state agency, legal, pharmaceutical, retail, manufacturing, academic, and health care clients. Rob is responsible for assisting his clients in maintaining OSHA, DOH, DEC, and EPA compliance by performing and managing OSHA and environmental audits, developing personal exposure monitoring programs, conducting workplace training, performing hazardous waste characterization and sampling, conducting Indoor Air Quality (IAQ) assessments, and Phase I and II Environmental Site Assessment studies including the oversight of drilling, excavation, and underground storage tank removal activities. He is also experienced in the management of Brownfield site work, the development and management of PCB related site activities, and has extensive public speaking experience ranging from work place training to industry conferences. Rob regularly corresponds with Federal, State, and Local regulatory agencies. He regularly prepares cost estimates, proposals, and project reports for all types of environmental consulting projects.

www.fando.com

REPRESENTATIVE PROJECTS:

Burlington High School PCB Soil, Building Materials, Air Investigation, and Third-party Oversight, Burlington School District, Burlington, VT

The following projects were prior to joining Fuss & O'Neill:

PCBs in School Air Contract, Vermont Department of Environmental Conservation, Statewide, VT

Environmental and OSHA Compliance, CVPH Medical Center, Plattsburg, NY

Environmental and OSHA Compliance, W. Schonbek LLC, Plattsburg, NY

Environmental and OSHA Compliance, Vermont Agency of Transportation, Statewide, VT

Environmental and OSHA Compliance, Shipman and Goodwin, VT and NY

OSHA Compliance, Veterans Administration Medical Center, Statewide, VT

Building Sciences, Vermont Department of Buildings and General Services, Statewide, VT

Environmental Services, City of Burlington, VT



Dayna Ullathorne

Environmental/Building and Hazardous Waste

“My work contributes to a larger benefit to the community and environment. I enjoy knowing my job can make such an impact.”

dullathorne@fando.com

802.698.0477

EDUCATION

BS, Ecology & Environmental
Science - 2022
University of Vermont

EXPERIENCE

< 1 year Professional Experience
< 1 year with Fuss & O'Neill

Dayna recently joined Fuss & O'Neill's White River Junction office as an Environmental Scientist. In the Environmental and Facilities Services Business Line, Dayna works on a variety of projects involving hazardous building materials and indoor air quality. She serves both public and private clients providing valuable expertise to each project.

REPRESENTATIVE PROJECTS:

Burlington High School PCB Soil, Building Materials, Air Investigation, and Third-Party Oversight, Burlington School District, Burlington, VT

VTDEC PCB Indoor Air Sampling in Schools, Burlington, VT

Environmental Health and Safety Services On-call, Vernal Biosciences, Colchester, VT

2022 Landfill Monitoring, South Deerfield, MA

Woodstock Meadow Solar Station, Glenvalle, LLC, Jamaica Plain, MA



Heidi Quesada, LLS, PLS

Survey/Right-of-Way

“Nothing is more exciting than exploring the sights, challenges, and adventures each new project brings.”

hquesada@fando.com

603.222.3463

EDUCATION

BA, Political Science - 1987
University of Massachusetts at Amherst
AS, Architectural Engineering Technology - 2006
New Hampshire Technical Institute (Concord)

LICENSES & REGISTRATIONS

Land Surveyor MA
Land Surveyor NH
Septic Designer NH
Septic System Evaluator NH

PROFESSIONAL AFFILIATIONS

MA Land Surveyors
Granite State Designers Installers
NH Land Surveyors Association
National Society of Prof Surveyors
VT Society of Land Surveyors
ME Society of Land Surveyors

EXPERIENCE

33 years Professional Experience
21 years with Fuss & O'Neill

Heidi has over 30 years of experience in land and title research and is a licensed subsurface disposal system designer and evaluator. As a land surveyor she has been able to combine these skills in her daily tasks. She is responsible for researching land, owner, and right-of-way information at various registries, town offices, and government agencies throughout Massachusetts, New Hampshire, Maine, and Vermont for various projects. She also performs survey note reduction, computations, the detailing and generation of worksheets and plans, boundary and right-of-way determinations, and prepares field crew assignments. While working in the field Heidi has been involved in various construction layout projects ranging from large commercial facilities to residential subdivisions, from extensive urban topographic plans to rural boundaries.

REPRESENTATIVE PROJECTS:

US 2 Right-of-Way & Title Abstracts, VTrans, Cabot-Danville, VT
US 5 Title Abstracts, VTrans, Brattleboro, VT
U.S. Route 2 Culvert Replacement, VTrans, Lunenburg, VT
Six Bridge Deck Rehabilitations, VTrans, Various Locations, VT
Roaring Brook Road Bridge Replacement, VTrans, Barton, VT
US 2/US 7 Exit 16 Right-of-Way Plans and Title Abstracts, VTrans, Colchester, VT
Survey Services, VTrans, Thetford-Fairlee, VT
US 7 Right-of-Way Plans and Title Abstracts Segments 3 & 4, VTrans, Pittsford, VT
VT 109 Survey, VTrans, Cambridge, VT
Elm Street/Gaslight District Improvements, Manchester, NH



Gregory Brown, LLS, PLS

Survey/Right-of-Way

“From protecting lands with conservation easements to developing lands for improvements, I find providing the solid foundation for these projects through land surveying to be both challenging and rewarding.”

gbrown@fando.com

603.222.3462

EDUCATION

AS, Civil Engineering Technologies
- 1983
Hudson Valley Community
College (NY)

LICENSES & REGISTRATIONS

Land Surveyor ME
Land Surveyor VT
Land Surveyor NH

PROFESSIONAL AFFILIATIONS

NH Land Surveyors Association
National Society of Prof Surveyors
Vocational Partnership
Foundation

EXPERIENCE

41 years Professional Experience
36 years with Fuss & O'Neill

Greg is in charge of the daily administration of Fuss & O'Neill's land surveying services in New Hampshire, Maine, and Vermont. His responsibilities include project scheduling, supervision of field and office personnel, quality control, project management, boundary re-establishment and/or determination, and technical supervision. Greg has been involved in numerous residential, commercial, municipal, state, and construction survey assignments, as well as the organization and performance of various GPS control surveys throughout New England.

REPRESENTATIVE PROJECTS:

US 2 Right-of-Way & Title Abstracts, VTTrans, Cabot-Danville, VT

US 5 Title Abstracts, VTTrans, Brattleboro, VT

U.S. Route 2 Culvert Replacement, VTTrans, Lunenburg, VT

Six Bridge Deck Rehabilitations, VTTrans, Various Locations, VT

Roaring Brook Road Bridge Replacement, VTTrans, Barton, VT

US 2/US 7 Exit 16 Right-of-Way Plans and Title Abstracts, VTTrans, Colchester, VT

Survey Services, VTTrans, Thetford-Fairlee, VT

US 7 Right-of-Way Plans and Title Abstracts Segments 3 & 4, VTTrans, Pittsford, VT

VT 109 Survey, VTTrans, Cambridge, VT

Granite Street Reconstruction, Manchester, NH

South Street / Downtown Improvements, Milford, NH



FUSS & O'NEILL

205 Billings Farm Road
White River Junction, VT 05001
800.286.2469
www.fando.com