

Nydia Lugo, Technical Development Engineer  
Agency of Transportation, Municipal Assistance Bureau  
219 North Main Street  
Barre, VT 05641

March 6, 2020

**RE: At-The-Ready Consulting Engineering Services for Municipalities: Municipal Project Management**

Dear Ms. Lugo:

**GPI/Greenman-Pedersen, Inc.** is pleased to submit our Qualifications to VTrans to provide **Municipal Project Management Services** for municipalities choosing to use the Municipal Assistance Bureau At-The-Ready selection process. GPI is a multi-disciplined firm with a proven record of providing high quality engineering and construction services for over 50 years. We maintain a permanent staff of 1,500+ professionals and many of our staff specialize in the delivery of transportation projects in the public sector for State, Local and County governments.

While this is our first-time submitting qualifications for the ATR Municipal Project Management Services, our staff is very experienced in project management. GPI is pleased to offer **Mr. Pat Travers**, formerly employed by Staff Sterling Management, as a Municipal Project Manager. Mr. Travers has been providing MPM services for a variety of municipal projects for more than 10 years and was the MPM for Staff Sterling Management under the current ATR roster. Pat has exemplary relationships with many communities across the state and has earned their trust as a competent, reliable and professional MPM. GPI is thrilled to have Pat on our team!

In addition, GPI has hired **Mr. Mark Woolaver** and is delighted to be able to offer his services as MPM. Mr. Woolaver was a project manager for the Pavement Management Section of VTrans for more than 10 years and was responsible for delivering hundreds of pavement preservation and safety projects and is intimately familiar with the VTrans project delivery process.

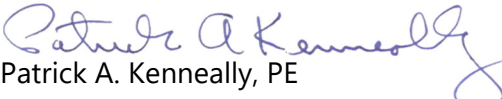
We are also proud to offer **Mr. Jason Rowell, PE** as MPM. Mr. Rowell has demonstrated his proficiency with any task assigned. Under the guidance of Mr. Travers and Mr. Woolaver, Jason will be able to apply his years of experience in managing construction contracts and knowledge of the process to help guide communities to a successful project.

This qualification submittal includes general firm information, an organizational and availability chart, qualifications and experience of the firm/team, examples of relevant projects and key personnel and their resumes. We have also demonstrated our experience working with municipalities and our clear understanding of the scope of work for locally managed projects. We are confident the GPI Team offers the most qualified MPM's and we look forward to providing these services to municipalities through the ATR process.

We appreciate the opportunity to submit this Statement of Qualifications and we hope it clearly reflects our firm's ability and enthusiasm to perform Municipal Project Manager Services to municipalities through the MAB ATR selection process. Enclosed are one (1) electronic copy and ten (10) bound copies of our submission for review and consideration.

Sincerely,

**GPI/Greenman-Pedersen, Inc.**

  
Patrick A. Kenneally, PE  
Branch Manager | Executive Vice President

### Request for Qualifications | Two-Tier (State-Local) Qualifications-Based Selection for At-The-Ready (ATR) Consultant Engineering Services for Municipalities | MUNICIPAL PROJECT MANAGEMENT



---

# Table of Contents

---

*Cover Letter*  
*Cover*  
*Table of Contents*

**SECTION 1 | ..... GENERAL INFORMATION**  
    -Introduction to Consultant Firm | Page 5  
    -Organizational Chart | Page 6  
    -Availability Chart | Page 6

**SECTION 2 | ..... MUNICIPAL PROJECT MANAGEMENT SERVICES**  
    -Qualifications and Experience of Firm | Pages 8-10  
    -Project Examples | Pages 10-11  
    -Key Personnel | Pages 11-12  
    -Qualifications and Experience of Staff | Page 12

**SECTION 3 | ..... RESUMES**  
    -Resumes | Pages 14+

# SECTION 1.

---

## GENERAL INFORMATION

*-Introduction to Consultant Firm*

*-Organizational Chart*

*-Availability Chart*

## General Information

### Introduction to Consultant Firm

**GPI/Greenman-Pedersen, Inc.** is pleased to submit our statement of qualifications to the Vermont Agency of Transportation (VTrans) for placement on the At-The-Ready (ATR) roster for providing Municipal Project Management (MPM) Services to municipalities developing local transportation facilities through the VTrans Municipal Assistance Bureau (MAB). Founded in 1966, GPI is a leading multi-discipline engineering consulting firm that specializes in the innovative design, management and construction of transportation infrastructure and building projects. GPI maintains a permanent staff of 1,500+ professionals specializing in the design, management and construction of projects in the public and private sectors, with an emphasis on the transportation industry.

Currently, GPI is providing construction inspection services directly to Vermont communities and through the VTrans MAB ATR selection process and is pursuing a renewal of our ATR qualified status through the recent request for qualifications. GPI has been working closely with VTrans since 1996 and is very familiar with the process and requirements for projects managed by a municipality or by VTrans.

GPI is taking this opportunity to submit this Statement of Qualifications for MPM ATR services because we believe we have earned a reputation for providing value to our Vermont clients and wish to expand our offerings to include MPM services. The recent hires of Mr. Pat Travers and Mr. Mark Woolaver offer VTrans and the municipalities unparalleled project management experience at the state and local level. GPI has demonstrated our proficiency working on State and Federally funded projects in Vermont for more than 20 years, competently facilitating municipally managed projects through the construction phase, and the addition of Pat and Mark enables us to continue this tradition with MPM services.

The addition of Mr. Travers to our team, and his wealth of experience in performing MPM and CI services, allows GPI to offer our municipal clients the same level of quality and customer service we have provided during the construction phase. Pat brings to GPI extensive experience as an MPM in the municipal marketplace, having completed several projects since 2008, including five that were developed through the MAB during the last five years. The MAB projects include sidewalks, modifications to bridges to accommodate pedestrians, drainage improvements and shared use paths. Pat has delivered these projects for the City of Barre and the Towns of Castleton, Plainfield and Moretown, and has earned a reputation as a practical, effective MPM that brings his experience with him to every project. Pat knows how to deliver municipally managed projects and has demonstrated his ability to meet schedules, stay on budget and follow the rules.

Mr. Woolaver brings to our team 10 years of project management experience, delivering projects for VTrans in accordance with State and Federal requirements. Mark led a team of state employees and consultants tasked with delivering the Class 1 Town Highway, State and Interstate pavement preservation and rehabilitation program, valued at \$100M per year. Mark has an intimate knowledge of the project delivery process, is well versed in the regulatory requirements for projects, has worked with municipalities throughout the state for the Class 1 Town Highway projects and is acutely familiar with the public involvement and outreach process. Mark is a well-respected engineer and trusted throughout the industry.

GPI recognizes this is our first statement of qualifications for ATR MPM services and we are submitting this qualifications statement because we have the personnel with the skills and experience to deliver. Pat and Mark have the demonstrated experience in performing project management throughout Vermont, they have developed relationships based on trust and performance throughout the state and they can provide the guidance that will keep projects moving forward, thereby avoiding the pitfalls and traps, and ensuring the process is followed so as to not jeopardize the grant money or project funding. Pat and Mark have the experience and temperament to guide Vermont municipalities through any project type that is partially or fully funded by the federal and state government and will make outstanding MPM's.

GPI's Principal-In-Charge and contact information are as follows:

**Patrick A. Kenneally, PE**  
Executive Vice President / Branch Manager  
80 Wolf Road, Suite 300  
Albany, NY 12205  
Phone: 518.453.9431 | [pkenneally@gpinet.com](mailto:pkenneally@gpinet.com)

GPI's Contract Manager in Charge and contact information are as follows:

**David J. Hoyne, PE**  
Senior Civil Engineer  
1445 Center Fayston Rd  
N Fayston, VT 05660  
Phone: 802.917.4310 | [dhoyne@gpinet.com](mailto:dhoyne@gpinet.com)

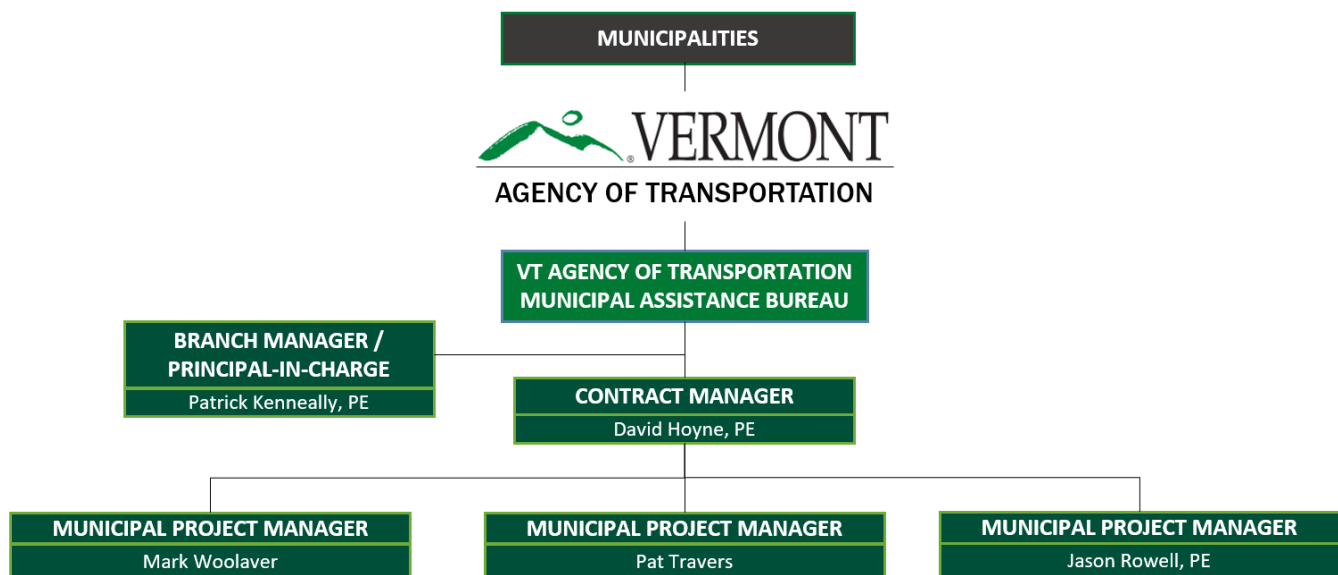
## Organization Chart

The following organizational chart offers a graphical representation of the team structure for any municipal contracts that we procure through the At-the-Ready (ATR) process. The Executive Vice President overseeing GPI operations is Mr. Pat Kenneally PE. Pat will provide executive level oversight of the team, with direction to the Contract Manager to ensure the goals of the program are achieved and the work meets or exceeds our clients' expectations.

Mr. David Hoyne PE will be the Contract Manager and point of contact for VTrans and the municipalities. David will be directly responsible for working with the municipalities to develop responses to RFP's and negotiating cost proposals for the work, reviewing work product from the MPM to ensure the work meets quality expectations and provide feedback to the MPM's regarding cost and schedule.

The primary MPM's will be Mr. Travers and Mr. Woolaver. We are also including Mr. Jason Rowell PE in the roster for MPM's with the intent to expand the roster of available MPM's. Mr. Rowell is an accomplished engineer with a proven track record of developing construction specifications, serving as an inspector, chief inspector and office engineer for a variety of construction projects, and as a quality assurance engineer for design-build projects. Jason has the knowledge and skills to be an excellent MPM if given the opportunity. There may be an opportunity on select projects for Jason to apprentice under the guidance of Pat and Mark and prove he can perform as an MPM.

The resumes for the entire team are provided in the Resumes tab.



## Availability Chart

Name	Proposed Role	Availability
Jason Rowell, PE	MPM	50% Available for projects
Mark Woolaver	MPM	50% Available for projects
Pat Travers	MPM	100% Available for projects

## SECTION 2.

---

### MUNICIPAL PROJECT MANAGEMENT SERVICES

- *Qualifications and Experience of Firm*
  - - *Project Examples*
  - - *Key Personnel*
- *Qualifications and Experience of Staff*

## Municipal Project Management Services

### Qualification and Experience of Firm

GPI has been performing project management services for clients in the building and transportation sectors for decades, to include private clients, DOT's and municipalities. GPI is accustomed to providing comprehensive project management services to public and private sector clients undertaking development or capital improvement projects. Our project managers are trained to be well versed with the client's project development process, to understand critical path schedules and scheduling software, to manage the design and technical support services and offer outstanding communication and documentation services.

Managing a complex project requires a detailed working knowledge of the project goals and constraints which leads to the development of a realistic project schedule and estimate of costs. These must anticipate the regulatory, ROW and utility relocation processes and associated schedule implications. The project manager is the conductor and must have the knowledge, skills and experience to guide the team in a measured and predictable manner. The project manager must be prepared to augment the team with the necessary resources and hold team members accountable for quality, schedule and cost.

At GPI our project managers have the tools and process controls in place to guide them and be successful in meeting our client's needs and expectations.

Our presence in the Vermont market for project management has been bolstered by our new employees; Mr. Pat Travers, formerly with Staff Sterling Management, and Mr. Mark Woolaver, formerly with VTrans. These two combined have more than 20 years of experience delivering projects as project managers in Vermont.

Mr. Travers has been delivering projects as an MPM for Staff Sterling Management since 2008. This includes providing such services to municipalities consistent with the tasks and responsibilities outlined in the Local Projects Guidebook. In the past five years, Pat has served as MPM for the following municipal infrastructure projects coordinated through the MAB:

- Town of Castleton; Route 4A West Sidewalk project, Castleton STP BP 13(10)
- Town of Castleton; Route 30 Sidewalk project, Castleton EH 10(4)
- Town of Plainfield; Main Street Pedestrian Bridge project, Plainfield STP BP 14(3)
- Town of Moretown; Village Sidewalk and Drainage project, Moretown STP BP 13(8)
- City of Barre; Smith Street Shared Use Path, Barre City TAP TA 13(4)

In addition to those projects coordinated through the MAB, Mr. Travers has provided MPM services directly to other municipalities that developed infrastructure projects outside the MAB process. Pat was also under contract, from 2009 through 2019, by the Vermont State Parks to perform total project management services for its parks in the northwest quadrant of Vermont. During that time, Pat managed 15 projects for the State Parks to include park planning and development, infrastructure construction, building renovations, historic restoration and other capital improvements.

Mr. Woolaver joined our team in 2019 after a long and distinguished career with VTrans. Mark was the only project manager for the Pavement Management Section of VTrans from 1997 through 2007 and oversaw the design and development of construction contracts for one of the largest programs at VTrans. Mark led a team of state employees and consultants tasked with delivering the Class 1 Town Highway, State and Interstate pavement preservation and rehabilitation program, valued at \$100M per year. The program was delivered in accordance with the VTrans project development process, State and Federal requirements. Mark delivered literally hundreds of projects during his tenure and can probably boast having delivered more projects than any other project manager in VTrans history. Mark clearly has an intimate knowledge of the project delivery process and will be able to quickly consume and adapt the MAB requirements outlined in the Local Projects Guidebook.



Mark worked with municipalities throughout the state for the delivery of the Class 1 Town Highway projects. He is acutely familiar the needs of the communities, including access control requirements, maintenance agreements for sidewalks in the State ROW, parking spaces, signs, and safety features. Mark was directly involved with the public involvement process during the development stages for the most challenging projects and has the right personality for the job. Mark has a unique ability to engage with the communities as is quickly accepted as a trusted and respected engineer.

Pat and Mark have extensive experience with Federally Funded Projects and a working knowledge of the VTrans process and specifications. Together they have extensive experience developing appropriate design solutions, performing constructability reviews, controlling project scope and costs and ensuring the projects achieve the design elements that make them biddable, buildable and compliant with design guidelines. The projects must conform to all the procedures and regulations required by FHWA and VTrans, including the process workflows and documentation requirements.

For the past eleven years, Pat has worked with twenty-two Vermont municipalities, the Vermont Association of Snow Travelers and a state agency on transportation projects funded through VTrans-MAB; both as a Construction Inspection Consultant and as a Municipal Project Manager. This experience has bolstered us with a thorough working knowledge of the VTrans-MAB Project Development Process, the duties and responsibilities of the MPM, the various permit processes, the administrative and transparency requirements, and the state and federal funding guidelines surrounding public infrastructure construction.

For the entirety of Mark's 30-year career at VTrans, he worked within the framework of federally funded projects, using the VTrans project development process and VTrans Standard Specifications, procedure manual and design guidelines.

Specific competencies offered by the GPI team include:

- Familiarity with State of Vermont procurement and contracting process
- Knowledge of VTrans specifications, MAB procedures and requirements
- Familiarity with state and local permitting processes
- Knowledge of federal government procurement guidelines
- Knowledge of federal funding regulations (CFR)

Our team has also worked under contracts governed by the following reference materials, guidebooks and manuals, and we have a working knowledge of the requirements contained within:

- VTrans *Municipal Assistance Bureau Local Projects Guidebook for Locally Managed Projects, 2014, revised May 2019*
- VTrans Specifications for Contractor Services, June 2014
- VTrans Pedestrian and Bicycle Facility Planning and Design Manual, 2002
- Vermont Standard Specifications for Construction 2011 & 2018
- VTrans General Special Provisions for 2011 & 2018
- Specifications VTrans Construction Manual
- VTrans Route Survey Manual
- VTrans Quality Assurance Program
- VTrans Materials Sampling Manual
- VTrans Approved Products List
- VTrans List of Materials with Advance Certification
- Project Special Provisions
- Manual on Uniform Traffic Control Devices

The duties and responsibilities for the MPM outlined in the Local Projects Guidebook are clearly articulated and very familiar to Pat and Mark. Whether it is invoicing or billing, preparing and executing contracts, conducting

kick-off or local concerns meetings, shepherding the PS&E development or addressing contaminated soils or utility relocations, the communities will have the confidence that GPI MPM's have the experience to deliver the project. More importantly, our MPM's take responsibility for successful delivery of the project.

## Project Examples

The following is a sample of transportation projects and other public infrastructure projects for which Mr. Pat Travers served as MPM, including contact information for key stakeholders:

### **Town of Castleton, VT**

### **Route 30 Sidewalk Project**

### **Castleton STP EH 10(4)**

Pat Travers served as Municipal Project Manager for this undertaking that will create 4,000 feet of new sidewalk along Route 30, from the Castleton Corner intersection to the Castleton Family Health Center. The project is currently in the rights-of-way acquisition stage with construction hoped-for in the summer of 2020. The project is being coordinated through the VTrans Municipal Assistance Bureau.

#### *Contacts:*

Mike Jones, Town Manager  
(802) 468-8939 Ext. 203  
[manager@castletonvt.org](mailto:manager@castletonvt.org)

Peter Pochop, VTrans-MAB Project Supervisor  
(802) 477-3123  
[peter.pochop@vermont.gov](mailto:peter.pochop@vermont.gov)

### **Town of Castleton, VT**

### **Route 4A West Sidewalk Project**

### **Castleton STP BP 13(10)**

Pat Travers provided Municipal Project Management services for this effort that resulted in the construction of 3,800 feet of sidewalk along Route 4A, between the villages of Castleton Corner and Hydeville. Construction was completed in July 2019. The project was coordinated through the VTrans Municipal Assistance Bureau.

#### *Contacts:*

Mike Jones, Town Manager  
(802) 468-8939 Ext. 203  
[manager@castletonvt.org](mailto:manager@castletonvt.org)

Peter Pochop, VTrans-MAB Project Supervisor  
(802) 477-3123  
[peter.pochop@vermont.gov](mailto:peter.pochop@vermont.gov)

### **Town of Plainfield, VT**

### **Main Street Pedestrian Bridge**

### **Plainfield STP BP14 (3)**

Pat Travers fulfilled Municipal Project Manager services for this undertaking that will culminate in the construction of a new pedestrian walkway from the Mill Street parking lot to the Plainfield Town Hall / Opera House. The project includes widening the existing Main Street Bridge over the Winooski River to accommodate the new sidewalk. Construction is scheduled to start in April 2020. The project is being coordinated through the VTrans Municipal Assistance Bureau.

#### *Contacts:*

David Strong, Citizens Advisory Committee  
(802) 454-1418  
[dstrong@vtlink.net](mailto:dstrong@vtlink.net)

Ross Gouin VTrans-MAB Project Supervisor  
(802) 595-2381  
[ross.gouin@vermont.gov](mailto:ross.gouin@vermont.gov)

### **Town of Moretown, VT**

### **Village Sidewalk Improvement Project Moretown STP BP 13(8)**

Pat Travers recently concluded Municipal Project Manager responsibilities for the Town of Moretown. This project involves replacing 1,700 feet of existing sidewalk, adding granite curbing and improving the stormwater collection system along the east side of Route 100B through the entirety of Moretown Village. Construction of this project is scheduled for the spring of 2020. The project is being coordinated via the VTrans Municipal Assistance Bureau.

#### *Contacts:*

Cherilyn Brown, Town Clerk  
(802) 882-8218  
[townclerk@moretownvt.net](mailto:townclerk@moretownvt.net)

Chris Hunt, VTrans-MAB Project Supervisor  
(802) 595-4556  
[chris.hunt@vermont.gov](mailto:chris.hunt@vermont.gov)

### City of Barre, VT

### Smith Street Shared Use Path

### Barre STP TAP TA13 (4)

Pat Travers acted as Municipal Project Manager for the City of Barre on this effort that created a new 1,900 LF multi-use recreation path, with other improvements, along Smith Street. The project was constructed in 2017. This project was coordinated through the VTrans Municipal Assistance Bureau.

#### Contacts:

Steve Mackenzie, City Manager  
(802) 476-0240  
[manager@barrecity.org](mailto:manager@barrecity.org)

Jon Kaplan, P.E., VTrans-MAB Project Supervisor  
(802) 498-4742  
[jon.kaplan@vermont.gov](mailto:jon.kaplan@vermont.gov)

### VT Dept. of Forests, Parks & Recreation Park Development Plan

### Alburgh Dunes State Park

For seven years, Pat Travers served as Owner's Project Manager for Vermont State Parks on this effort that brought limited development to this designated rustic park. Mr. Travers oversaw all design, permitting and construction activities of this undertaking. This \$1.5 million project, which was completed in 2019, resulted in the development of better parking areas, pedestrian enhancements, nature trails, interpretive signage, toilet facilities and other infrastructure improvements at one of the State's most popular parks.

#### Contacts:

Frank Spaulding, Parks Projects Coordinator  
(802) 522-0798  
[frank.spaulding@vermont.gov](mailto:frank.spaulding@vermont.gov)

Rob Peterson, Northwest Parks Supervisor  
(802) 279-8329  
[robert.peterson@vermont.gov](mailto:robert.peterson@vermont.gov)

### VT Fish & Wildlife Department John Guilmette Access Area Improvements South Hero, VT

Pat Travers provided Resident Project Management services for the State of Vermont Fish & Wildlife Department on this project that entailed replacing the former boat ramp with a modernized and larger ramp, installation of a new floating dock, expansion and improvements to the parking area, providing ADA accessibility to the launch site and relocating and improving Featherbed Lane, a road that bisects the property. This project was constructed during 2015 at a cost of approximately \$700,000.

#### Contacts:

Mike Wichrowski, VT Fish & Wildlife Dept.  
(802) 917-1347  
[Mike.wichrowski@vermont.gov](mailto:Mike.wichrowski@vermont.gov)

Jim Burke, P.E., ANR Engineer  
(802) 777-3396  
[jim.burke@vermont.gov](mailto:jim.burke@vermont.gov)

## Key Personnel

The Contract Manager for this project will be **Mr. David Hoyne P.E.**, Senior Construction Engineer and the former State Construction Engineer for VTrans. Mr. Hoyne retired from VTrans in 2017 after a 28-year career with the Agency. Mr. Hoyne also served as the Vice Chair of the AASHTO Committee on Construction from 2010 until his retirement, assuming a leadership role with the national committee charged with advancing the state of practice for the highway construction program.

For the last 11 years of his career as the State Construction Engineer, David was responsible for delivering the capital construction program for VTrans in conformance with all State and Federal requirements. The program was approximately \$200 million annually and consisted of a mix of design-bid-build, design-build and CMGC projects for all modes of transportation. David was directly responsible for the development of the procedures contained in the VTrans Construction and Regional Procedures Manuals and has mastered the requirements for compliance. In addition, he is considered an expert in the VTrans Standard Specification for Construction, the Code of Federal Regulations (CFR), partnering, claims avoidance, claims analysis and resolution, and root cause analysis.

Mr. Hoyne will guide, coach and advise the team throughout the life of this assignment, bringing tremendous value to the work.

**Mr. Patrick Travers**, GPI Client Relations Specialist, is one of our designated Municipal Project Managers for municipal contracts procured through the ATR process. Mr. Travers possesses a degree in civil engineering and holds an Engineer-in-Training license. Mr. Travers has over forty years of professional experience in engineering, construction management and business management, and for the past thirty years, most of his focus has been in the area of managing projects. Mr. Travers’ career has included working for municipal agencies, earth moving contractors, general contractors in commercial construction, design-build firms, a multi-national engineering corporation, a state agency, Staff Sterling Management and GPI/Greenman-Pedersen, Inc. He has also owned businesses in the construction, education and agriculture arenas.

Mr. Travers commands a strong expertise in the area of public infrastructure projects and has fulfilled responsibilities as a construction inspector, resident engineer and project manager on many public sector efforts throughout Vermont, New York State and Connecticut; including those coordinated through the MAB. In addition to his experience as a Municipal Project Manager, Mr. Travers has managed twenty-three Construction Inspection Services contracts on local transportation projects developed through the MAB.

Mr. Travers’ personal strengths include strong verbal and written communication skills; diplomatic public relations capabilities; excellent public speaking and public presentation skills; and being able to effectively coordinate efforts among all those involved in a project, such as owners, design firms, contractors and the general public. He is also adept at managing multiple construction projects at the same time.

**Mr. Mark Woolaver** is our other designated Municipal Project Manager available for assignment to municipal contracts procured via the ATR process. Mark had a successful 30-year career as an engineer for VTrans, starting as a highway design engineer, then working as a construction inspector before being promoted to project supervisor. Mark was promoted again to become a project manager, where he served in that role for 10 years. Mark completed his career as the Paving Engineer for the VTrans, providing technical guidance to designers, contractors, project managers and construction engineers on proper specifications, manufacturing and laydown of bituminous concrete pavements. Mark is recognized nationally for his knowledge of best practices and has been an invited speaker for state and national audiences. Mark’s experience as a VTrans project manager make him uniquely qualified for the role as a MPM.

## Qualifications and Availability of Staff

Name	Role	Exp.	Firm	Qualifications
<b>Jason Rowell, PE</b>	MPM	18	GPI	ACI Concrete Field Testing Tech, Grade I; ATSSA Traffic Control; Permit-Required Confined Spaces – Entrant; Permit-Required Confined Spaces – Attendant; Permit-Required Confined Space Rescue – For Supervisors - Defensive Driving - NETTCP Concrete Inspector; Drilled Shaft Inspector; Driven Pile Inspector; HMA Paving Inspector; Soils & Aggregate Inspector - NHI Driven Pile Inspector Nuclear Density Gauge - OSHA 10-Hour - Professional Engineer
<b>Mark Wollaver</b>	MPM	30	GPI	PAV / AOT Committee, Lead Member Pavement Working Group, Lead Member - AOT Pavement Design, Committee Member - AOT Guard Rail, Committee Member - AOT Pavement Marking, Committee Member - NESMEA, Member - NEAUPG, Member - AOT NETTCP, Coordinator / Member - AOT Standard Specifications for Construction, Committee Member - AOT Standard Drawings, Committee Member - AASHTO EDC, Lead States Member - AASHTO / ARRA, Lead Member
<b>Pat Travers</b>	MPM	40	GPI	OSHA 10-Hour

# SECTION 3.

---

## RESUMES

## David J. Hoyne, PE

### Senior Construction Engineer

#### PROPOSED PROJECT ASSIGNMENT: Senior Construction Engineer

#### EDUCATION:

*BS/1989/Civil Engineering*

#### REGISTRATIONS/CERTIFICATIONS:

*1994/Professional Engineer/VT*

*National Highway Institute Certified Instructor*

*FHWA-Bridge Maintenance Training, 2000*

*FHWA- Construction Program Management  
Workshop, 2005*

*FHWA-NHI-Course No. 13049 Economical and  
Fatigue Resistant Steel Bridge Details, 1990*

*FHWA-NHI- Course No. 01-004 Highways in  
the River Environment, 1993*

*FHWA-NHI- Course No. 132014, Drilled  
Shafts, 2002*

*FHWA-NHI-Course Alternative Contracting,  
2005*

*FHWA-NHI-Course No. 134064, Transportation  
Construction Quality Assurance, 2006*

*FHWA-NHI-Course No. 136065, Risk  
Management, 2008*

*FHWA-NHI-Course 420018 Instructor  
Development Course, 2017*

*Vermont Criminal Justice Training Council, ICS  
100, 2012, ICS 200, 2013*

*AGC Fall Protection Training, 2005*

*OSHA 1926.21 Construction Hazard  
Awareness Training,*

*OSHA 1926.503 Fall Protection Certification  
and Inspection, 2012*

*ASCE Leadership Development for the  
Engineer, 2008*

*ASCE Project Management, 2009*

*NASBA Fraud Awareness for Managers, 2008*

*PCI, Prestressed Concrete Bridge Design  
Course, 1996*

*AASHTO, Management Development Training,  
1997*

**YEARS WITH FIRM: 2**

**TOTAL YEARS EXPERIENCE: 30+**

#### Professional Profile

Mr. Hoyne is an expert with demonstrated leadership for all phases of program delivery in the field of transportation engineering. He is driven to inspire transportation professionals to seek excellence in their work, promote a culture of quality and the fundamental principles and canons of the engineering profession. Mr. Hoyne is a leader with a clear focus on safety.

Mr. Hoyne has built a successful career through the development of lasting and effective relationships with all stakeholders, maximizing employee potential by aligning employee strengths with opportunities, and leading organizational excellence through process improvement, performance management and documentation. Mr. Hoyne is an expert at constructability reviews, contract specifications, root cause analysis and developing solutions to move complicated challenges forward. Mr. Hoyne has extensive experience analyzing contractors claims, delays and disputes, and has served as an expert witness and lead negotiator for many complex claims and mediation.

#### Firm Experience

**GPI. 09/2017+.** As Senior Construction Engineer, Mr. Hoyne will provide expertise with constructability reviews, claims analysis, client relationships for locally managed construction services contracts, a subject matter expert in construction engineering, asset management, process improvement, bridge management and inspection and will provide training and onboarding expertise for construction inspection staff.

**FHWA Bridge Preservation Expert Task Group.** Mr. Hoyne is supporting the BPETG as the principal author for the communication plan, facilitation services for the development of the next strategic plan and co-author for several of the technical guides promoting preservation such as the Bridge Washing, the Removal and Replacement of Bridge Coatings and Deck Patching guides.

**West Virginia Department of Transportation.** Mr. Hoyne is the principal investor leading the team with the renewal of the WVDOT-DOH Contract Award Manual. This project is capturing the current state workflows for the prequalification, PS&E, procurement and award processes including documentation of state and federal requirements, changes to the construction manual and standard specifications.

**Municipally Managed Projects.** Mr. Hoyne is serving as the regional manager for resident engineer and construction inspection services for locally managed projects. Projects include the Market Street reconstruction project in South Burlington, Sykes Mountain Avenue Roundabouts project in Hartford, and sidewalk projects in Springfield, West Rutland and Moretown Village, Vermont.

**National Highway Institute.** Mr. Hoyne is a certified instructor teaching three courses for NHI including 130053 Bridge Inspection Refresher, 134067 Inspection of Bridge Rehabilitation Projects and 130091B Underwater Bridge Repair and Countermeasures. In addition, Mr. Hoyne is the subject matter expert for a new 6-hour web-based training for construction inspectors and is responsible for developing the technical content for the lessons.

**Albany Port District Commission.** Mr. Hoyne is providing expert guidance to the APDC as they navigate a notice of claim for a construction delay alleged by the contractor. *Client: Albany Port District Commission.*

#### Prior Firm Experience

**AASHTO Subcommittee on Construction, Vice Chair, 2010-2017.** Responsibilities included the development of the annual work plan, managing the committee functions in preparation and support of the annual meeting and providing support for the Chair and AASHTO committee liaison with committee matters.

## Jason Rowell, PE

### Construction Services

#### PROPOSED PROJECT ASSIGNMENT: CE IV

#### EDUCATION:

BSCE/2007/Norwich University, GPA 3.1/  
Dean's List/Member ASCE/Member Chi  
Epsilon  
AS/2007/ Mechanical Engineering  
Technology/Vermont Technical College;  
GPA 3.5/Presidents List/Member Tau Alpha  
Pi/ASCE Award - Greatest Academic  
Development; 2004/Mechanical Technician  
of the Year 2005  
AS/2004/Civil & Environmental Engineering  
Technology/Vermont Technical College

#### REGISTRATIONS/CERTIFICATIONS:

ACI Concrete Field Testing Tech, Grade I -  
2018  
ATSSA Traffic Control - 2017  
Permit-Required Confined Spaces – Entrant  
Permit-Required Confined Spaces – Attendant  
Permit-Required Confined Space Rescue – For  
Supervisors  
Defensive Driving  
NETTCP Concrete Inspector - 2018  
NETTCP Drilled Shaft Inspector - 2017  
NETTCP Driven Pile Inspector - 2019  
NETTCP HMA Paving Inspector - 2016  
NETTCP Soils & Aggregate Inspector - 2017  
NHI Driven Pile Inspector  
Nuclear Density Gauge  
OSHA 10-Hour  
Professional Engineer – VT - 2019

**YEARS WITH FIRM: 10**

**TOTAL YEARS EXPERIENCE: 18**

#### Professional Profile

Mr. Rowell is well versed in all facets of construction inspection. He is experienced in developing Quality Assurance plans and coordinating inspection activities for construction projects. He is proficient in project layout, general surveying and data collector operation, Site Manager, Site Manager Reports, E-Books, DocExpress, as well as plan, specification, and contract reading. He maintains great technical communications (Microsoft: Outlook, Excel & Word), and is good with developing and maintaining working relationships. He is skilled in creating record plans with AutoCAD and has experience in bridge design, plan review, and cost estimating.

#### Project Experience

Mr. Rowell served as a Chief Inspector or Inspector on the projects listed below. As a Chief Inspector, he was responsible for the administration, engineering, and inspection of the project. Duties included survey including initial project control, verifying the contractor's layout during construction, and taking cross sections to determine pay quantities; monitoring field operations, verifying field measurements, coordinating sampling, traffic control, safety issues, public meetings, and general communication and documentation duties. As Chief Inspector, he also delegated duties to the inspector(s) and the Office Engineer.

**South Burlington STP 5200(17), VT.** 06/18-Present. Chief Inspector. This project included the complete reconstruction of Market street. The project included new subbase, pavement, sewer and water lines, underground utilities, drainage, stormwater treatment ponds, sidewalks, curbing, lighting, landscaping, traffic signal modifications, pavement markings, and other related items on new horizontal and vertical alignment. *Client: City of South Burlington; Justin Rabidoux, Public Works Director.*

**Hardwick-Danville STP 2122(1), VT.** 08/17-12/17. Chief Inspector. This 12.5-mile paving project was on VT 15. Work to be performed under this project included cold planing, resurfacing with leveling and wearing courses, guardrail, removal of retaining walls, drainage improvements, pavement markings, and other highway related items. *Client: Vermont Agency of Transportation (VAOT); John Sladyk, Resident Engineer (RE).*

**Barton Village BO 1449(33) and Barton Village BHF 0286(5), VT.** 04/17 to 08/17. Chief Inspector. The BO project was to replace the bridge at the intersection of VT 16 and TH 4 (Roaring Brook Road) on a new alignment. The BHF project was to

replace the bridge on VT 16 (Glover Street) on the existing alignment. Both projects were accelerated bridge projects and included demolition of the existing of the existing structures, pre-excavation and installation of pile foundations, forming, tying, and placement of cast-in-place abutments, installation of precast abutments, placement and pre and post-tensioning of pre-cast box beams, grouting of shear keys for box beams, the placement of rapid-set closures for approach-slabs, the forming, tying placement and aesthetic finishing of cast-in-place combination bridge rail, construction of full-depth approaches, removal of contaminated soils, installation of torch-applied bridge membrane, placement of pavement, and installation of plug-joints. *Client: VAOT; Kevin McClure, RE.*

**Specification Coordinator.** 10/16-04/17. Mr. Rowell served as a specification coordinator for the VTrans Construction and Materials Bureau's Pre-Contract and Specifications group. Jason's responsibilities included reviewing and verifying the completeness of proposed contract specifications to verify compatibility with plans, permits, traffic management plan, estimate, and general VTrans construction conventions. Jason's responsibilities also included reviewing the constructability of the plans and specifications to identify any areas of concern and then coordinate with construction staff, project managers, permitting groups, and specialist, to fully identify and resolve any specification issues. Jason also assisted the Pre-Contract and Specifications Manager with identifying and establishing the workflow of this group (which was newly formed at the time) and developed some of the forms and guiding documents that formalized this process. *Client: Vermont Agency of Transportation; Wendy Ducey, Pre-Contract and Specifications Manager*

## Edward Mark Douglas Woolaver

### Construction Services

#### PROPOSED PROJECT ASSIGNMENT: CE IV

#### EDUCATION:

BSCE/1998/University of New Brunswick Civil Engineering Technology/1994/New Brunswick Community College

#### REGISTRATIONS/CERTIFICATIONS:

ACI Field Testing Technician, Grade I - 2020 (Anticipated)  
NETTCP HMA Paving Inspector – 2020 (Anticipated Recertification)  
Nuclear Density Gauge – RSO Cert  
OSHA 10

**YEARS WITH FIRM: 1**

**TOTAL YEARS EXPERIENCE: 30**

#### PROFESSIONAL AFFILIATIONS:

PAV / AOT Committee, Lead Member  
Pavement Working Group, Lead Member  
AOT Pavement Design, Committee Member  
AOT Guard Rail, Committee Member  
AOT Pavement Marking, Committee Member  
NESMEA, Member  
NEAUPG, Member  
AOT NETTCP, Coordinator / Member  
AOT Standard Specifications for Construction, Committee Member  
AOT Standard Drawings, Committee Member  
AASHTO EDC, Lead States Member  
AASHTO / ARRA, Lead Member

#### Professional Profile

Mr. Woolaver has worked for GPI for one year as a Chief Inspector after 30 years with the Vermont Agency of Transportation. Mr. Woolaver is capable and comfortable of working independently with minimum supervision and committed to respond wherever the need may be. He is a professional and motivated individual who consistently performs in challenging environments. Mr. Woolaver is an active member in many committees and is comfortable performing presentations, trainings, and public speaking.

#### Project Experience

Mr. Woolaver served as a Chief Inspector on the projects listed below.

As a Chief Inspector, he was responsible for the administration, engineering, and inspection of the project. He was accountable for survey, including initial project survey, verifying the contractor's layout during construction, and taking cross sections to determine pay quantities. Other duties included monitoring field operations, verifying field measurements and coordinating sampling. Traffic control, safety issues, public meetings, and general communication and documentation duties were also included. As Chief Inspector, he delegated duties to the Inspector(s) and the Office Engineer.

**Essex-Underhill STP PS19(6), VT.** 05/19-01/20. Chief Inspector. Work performed under this project included milling and resurfacing with a leveling and wearing course, pavement markings, guardrail and drainage improvements, and other highway related items on 13 miles of VT 15. *Client: Vermont Agency of Transportation (VAOT); Josh Hulett, Resident Engineer (RE).*

**Essex NH 2931 (2) & Jericho-Richmond STP 2931 (1).** 04/19-11/19. Chief Inspector. Work on this project included cold planing, reclaiming with emulsion injection, correcting superelevation deficiencies, resurfacing with base course of cold mix, intermediate and wearing courses of hot mix, pavement markings, guardrail, drainage and other related highway items on 6.8 miles of VT 117. *Client: VAOT; Josh Hulett, RE.*

#### Prior Firm Experience

**Vermont Agency of Transportation, Montpelier, VT.** 10/07-Present. Construction and Materials Paving Engineer. Mr. Woolaver is currently independently responsible to cover the State of Vermont as the subject expert in the field of various highway construction activities and HMA bituminous paving operations. His day to day activities

throughout the State serve to ensure consistency and protect the annual State investment of the current \$110M program. He reported on a periodic basis to management personnel. *Client: Vermont Agency of Transportation*

**Vermont Agency of Transportation, Montpelier, VT.** 08/97-10-07. Highway Design Project Manager. Mr. Woolaver was independently responsible for a Project Supervisor Design staff of six State personnel along with administering six Consultant 3-year retainer Contracts of \$3M/Contract. He was responsible for guiding the annual design of the program through to success and completion such that the annual program would be completed. He was responsible for reviewing and drafting, for management review, VAOT Policy such that the goals of the program were met, successful, and in line with FHWA requirements. He reported on a periodic basis to management. *Client: Vermont Agency of Transportation*

**Vermont Agency of Transportation, Montpelier, VT.** 12/94-08/97. Highway Design Project Supervisor. At the request of in-house management, he was transferred to this position from the field position. In this capacity, he was responsible for the review of Consultant designed project plans and performed Contract processing of the State's annual paving/roadway program. He worked independently with Consultant designers to ensure compliance with Vermont State Standards and to ensure the approximate \$75M program would be successful. *Client: Vermont Agency of Transportation*



**Patrick Kenneally, P.E.**  
Branch Manager/Executive Vice President

**PROPOSED PROJECT ASSIGNMENT:** Principal-in-Charge

**EDUCATION:**

*BS/1992/Civil Engineering*

**REGISTRATION/CERTIFICATIONS:**

*OSHA 10-Hour*

*Professional Engineer/KS*

*Professional Engineer/NY*

*Professional Engineer/OK*

*Professional Engineer/SC*

*Professional Engineer/TX*

*Storm Water Management*

*SWAC ID*

**YEARS WITH FIRM:** 21

**TOTAL YEARS EXPERIENCE:** 26

**PROFESSIONAL AFFILIATIONS:**

*National Society of Professional Engineers*

**Professional Profile**

Mr. Kenneally is the Branch Manager of the Albany, NY office. He has worked on numerous major transportation projects in both technical and managerial roles. He serves as Project Manager on the Branch's Construction Inspection contracts and is responsible for staffing and overseeing these contracts. Typical duties include developing design alternatives, performing initial calculations, preparing technical reports and managing all aspects of the design, coordinating the preparation of plans, specifications, estimates, environmental permits and other contract documents, developing and implementing proactive community involvement programs and ensuring that appropriate quality assurance/quality control guidelines are followed.

**Project Experience**

**CR 6 Emergency Culvert Replacement, Albany County, NY.** 06/19+. Structural Engineer. This project included the replacement of an existing failing culvert with corrugated steel plate arch with a larger hydraulic opening. The proposed structure was installed on pile and included cast-in-place concrete headwalls/wingwalls. The profile of the road had to be raised approximately 1-ft to accommodate the taller steel culvert while still providing the minimum cover of fill over it. GPI provided design of the substructures and prepared the contract plans, specifications and engineer's estimate, as well as provide construction support during the construction of the replacement culvert. *Client: Albany County DPW, Bill Anslow, (518) 765-2055 wanslow@albanycounty.com*

**RPI - 2019-2021 Engineering Services Blanket Purchase Order, Troy, NY.** 01/19+. Under this agreement GPI will provide Campus-Wide On-Call professional engineering and construction services as prime consultant to Rensselaer Polytechnic Institute (01/1/19 to 12/31/2021). GPI provided appropriately skilled technical staff to address items related to the Campus' existing and future infrastructure. The projects anticipated under this blanket agreement will vary in scope and magnitude including issues with existing infrastructure elements; condition assessments and analysis, code review, and investigatory and forensic studies of existing deteriorated/failed conditions. Professional services may also include developing long-term durable engineering solutions, designs for minor alterations and additions and independent reviews on behalf of RPI. *Client: Rensselaer Polytechnic Institute, Nicole Runyon, 518.276.6104. runyon@rpi.edu*

**North Ferry Street Force Main - Building Assessments, Schenectady NY.** 2019+. GPI provided professional structural engineering assessments of approximately 72 existing buildings consisting of residential, commercial and industrial buildings located along a North Ferry Street where a 30" diameter forced main sanitary system was being installed by the contractor. As required by the construction contract, GPI performed both pre and post construction structural assessment of these buildings in an effort to identify structural deficiencies that existing before the onset of construction work as well as deficiencies that may have been caused by the performance of work by the contractor. The assessments consisted of photographic documentation of the exterior of the buildings noting any visible cracks, signs of settlement, deterioration and/or distress. Following the field work, GPI prepared reports that summarized our findings with supporting color photos. *Client: Carver Construction, AG Bourgeois, 518.355.6034, ag@carvercompanies.com*

**Tappan Zee Bridge Replacement (The New NY Bridge) over the Hudson River [PIN 8TZ.100]; South Nyack, Tarrytown, NY.** 2012+. Principal-in-Charge. This \$3.9B Design-Build bridge replacement project for NYSTA involved a signature three-mile crossing over the Hudson River that is to be the widest bridge of that length in the world. As the Independent Quality Assurance Engineer for design and construction, GPI is responsible for providing a quality review of the work being performed and overseeing and/or performing quality audits of the Design-Builder's management, design and construction activities, the Design-Builder's Quality Control procedures, Verification Sampling and Testing and the quality of the final product, utilizing ISO 9001 standards. *Client: Tappan Zee Constructors, LLC/ New York State Thruway Authority; Sam Choy, 914.789.3226, sam.choy@tzc-llc.com*

**PIN 1754.68, County Route 111 Bridge over Hoosic River, Town of Johnsonville, Rensselaer County, NY.** 01/15+. Principal-in-Charge. GPI is providing construction support and inspection services that includes review and approval of shop drawings, review and approval of erection plans, review and approval of truss relocation plans; provide full time Resident Engineer and NACE Certified Paint Inspector as needed for the project.

## Patrick Travers, EIT

### Customer Relations Specialist

**PROPOSED PROJECT ASSIGNMENT:** Project Manager

**EDUCATION:**

*BS/1976/Civil Engineering*

**REGISTRATIONS/CERTIFICATIONS:**

*1976/Engineer-in-Training/CT*

**TOTAL YEARS EXPERIENCE:** 40+

### Professional Profile

Mr. Travers is a seasoned construction industry professional with over forty years of experience as a project manager, project engineer, estimator and construction inspector. He also owned his own construction consulting business in the past.

Mr. Travers has an extensive background in public infrastructure projects, where he has developed a solid reputation for managing construction inspection contracts and serving as a municipal project manager. For the past thirteen years, Mr. Travers has been involved, in a management capacity, for 38 municipal infrastructure projects throughout the State of Vermont. Additionally, Mr. Travers has managed 17 projects for Vermont State Parks and the Vermont Department of Fish and Wildlife.

Prior to his focus in public infrastructure projects, Mr. Travers was a successful project manager for general contractors in the commercial building arena as well as earthmoving contractors. Mr. Travers was directly responsible for managing the placement of over 250,000 cubic yards of concrete at a nuclear power plant and has extensive experience performing quantity takeoffs, developing cost estimates and assembling bids.

Mr. Travers is highly organized and has developed a keen skill for directing multiple projects concurrently. Mr. Travers is also adept at moderating efficient and effective project meetings and can effectively coordinate efforts among all stakeholders involved in a project, such as owners, engineers, contractors and the general public.

Personal strengths for Mr. Travers include strong verbal and written communication skills, public relations capabilities, and presentation skills.

### Firm Experience

**GPI. 02/2020.** As Client Relations Specialist, Mr. Travers is responsible for procuring municipal project management and construction inspection contracts, managing those contracts, assigning manpower to each project site and overseeing the site manpower. Additionally, Mr. Travers ensures that positive relationships are maintained with clients and GPI's services are provided in adherence to contract requirements. Responsibilities also involve overseeing quality control of work products, monitoring project schedules and keenly observing project budgets.

### Prior Firm Experience

**Staff Sterling Management, Morrisville, VT 2007-2020.** Project and Operations Manager. Responsibilities included marketing and assembling proposals for resident engineering, construction inspection and project management assignments within the municipal infrastructure arena, then managing those contracts once procured. A total of 38 municipal infrastructure projects were procured and managed, along with another 17 State of Vermont projects. Construction projects ranged up to \$3,000,000 in size and involved street reconstruction, new sidewalks, recreation paths, waterlines, stormwater collection systems, sanitary sewers, new building construction, building rehabilitations and historic preservation.

**Vermont Small Business Development Center (SBDC), Randolph, VT. 1998-2007.** Business Counselor. This position involved advising small business owners and entrepreneurs on how to start up and successfully manage a business in Vermont. One-on-one counseling was provided to clients and business planning classes were presented. Many clients were able to secure business financing via their business plans developed through SBDC counseling.

**Patrick Travers Construction Consulting, Burlington, VT. 1993-1998.** Owner/Operator. Primary services offered were construction estimating and project management for small commercial construction contractors in northern Vermont and the North Country of New York State. The company also offered owner representation services as well as the development and presentation of seminars on construction estimating and project management. The company was licensed to present the VT. Department of Health Lead Paint Essential Maintenance Practices workshop to landlords of residential rental properties. Some 2,000 landlords statewide were educated through dozens of workshops.

**CS Architecture and Construction, Burlington, VT. 1990-1993.** Construction Project Manager. This position was responsible for on-site commercial construction supervision, including manpower oversight, budget monitoring, schedule managing and moderating project meetings. Projects included the Akwesasne Community Health Center for the Mohawk Nation, a 2,000 square-foot medical facility that required the supervision of over 100 craft workers.