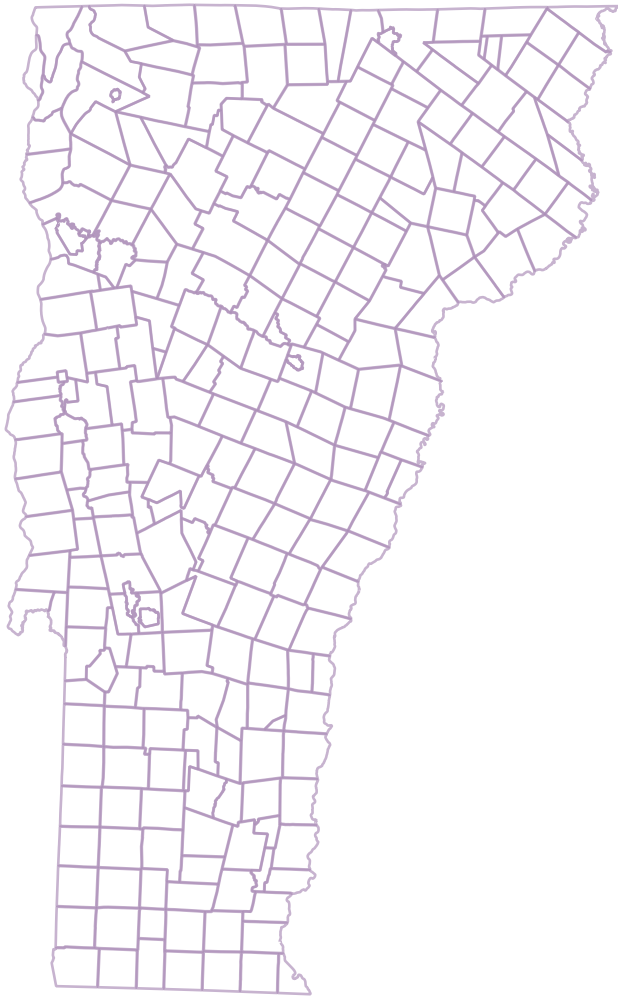
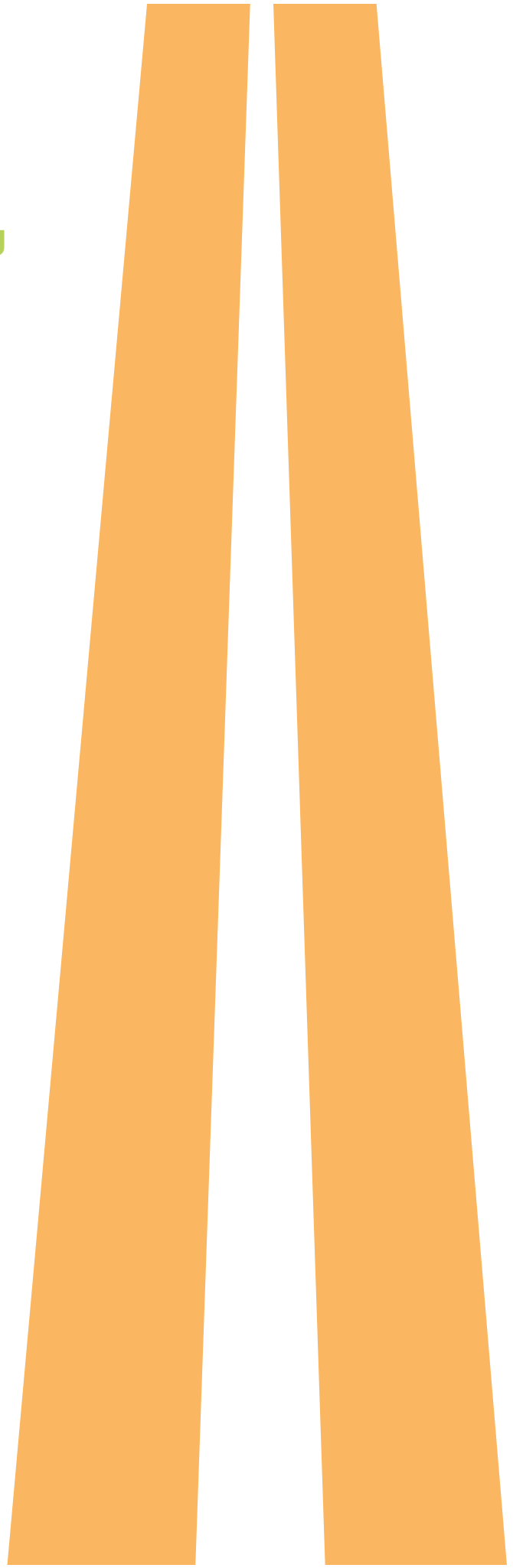


AT-THE-READY

2020 Consultant Engineering
Services for Municipalities



MPM SERVICES





626234X
March 9, 2020

Nydia Lugo, Technical Development Engineer
Municipal Assistance Bureau
Agency of Transportation
219 North Main Street
Barre, VT 05641

Subject: VTrans At-the-Ready Consultant Engineering Services for Municipalities – Municipal Project Management Services

Dear Ms. Lugo and Members of the Selection Committee,

DuBois & King (D&K) is pleased to submit ten (10) paper copies and one (1) electronic copy of our Technical Proposal in response to your February 6, 2020, Request for Qualifications for At-the-Ready Consultant Engineering Services for Municipalities (ATR). Please consider the following information as you review our proposal.

For more than 100 projects, D&K has provided scoping, design, municipal project management, and/or construction phase services for Municipal Assistance Bureau projects since the program's inception in the 1990s. D&K regularly leads projects receiving grants from the State of Vermont, FHWA, FEMA, FAA, and EPA throughout Vermont and New England.

We have selected qualified professionals with MPM and project management experience following the MAB program to serve this contract. D&K has a clear understanding of the requirements of federally-funded, municipally-managed transportation projects and the needs of municipal governments ranging in size from Vermont's smallest town to its largest city. Our staff maintain positive working relationships with Vermont's regional planning commissions and the regulatory community. We are committed to providing qualified, well-equipped, experienced, and responsible professionals who perform high-quality work on a consistent basis.

D&K has dedicated planning, design, and construction professionals who have provided services on hundreds of projects throughout Vermont over our 58-year history. Our project management and design experience includes roadway/highway reconstruction, paving and pavement management, bridges, intersections, culverts, dams, water/wastewater, sidewalks/pathways, historic facilities, utility reconstruction and replacement, stormwater, riverbank and slope stabilization, building construction, and site improvements.

D&K's team includes multidisciplined in-house personnel who frequently address the needs of municipal projects. We appreciate your consideration of our qualifications and look forward to continuing to support Vermont municipalities on state- and federally-funded transportation and infrastructure improvement projects. We would be pleased to answer any questions you may have. Please do not hesitate to give me a call at 802-728-7238 or contact me via email at krobie@dubois-king.com.

Sincerely,
DuBois & King, Inc.

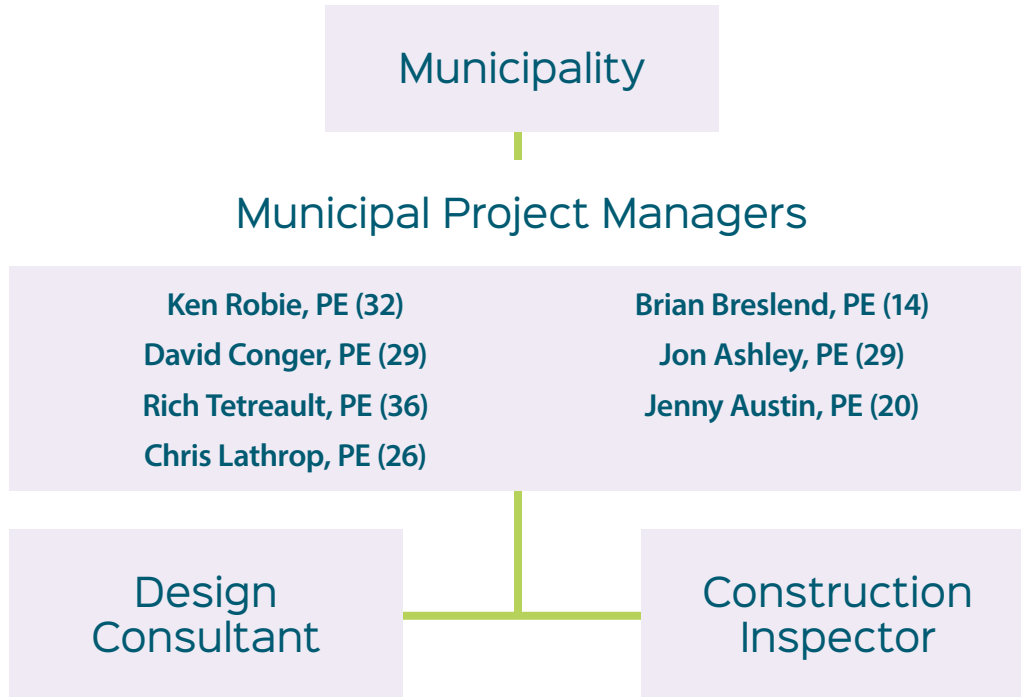
Ken Robie, PE
Contract Manager

General Firm Information

Introduction to the Consultant Firm

This document details DuBois & King’s (D&Ks) experience and qualifications to provide Municipal Project Management (MPM) services on projects being designed by others. D&K understands that we will act as an extension of municipal staff and work cooperatively with regulatory agencies, VTrans, the Design Engineer, and Construction Inspector to develop and/or manage projects in a focused and efficient manner.

Each of our key staff members is experienced with projects administered through VTrans and has project management experience that will be applied to MAB projects.



Staff Availability

Below is an overview of staff availability based on the firm’s current MPM workload. D&K’s ongoing larger MPM assignments include the Champlain Parkway and the Hartford Roundabouts; the firm is also engaged as MPM for smaller projects such as multimodal facility, salt shed, slope stability, and culvert projects. D&K anticipates the required weekly workload (availability) for MPM services will require up to 25% of a manager’s hours. D&K will staff projects according to individual project requirements.

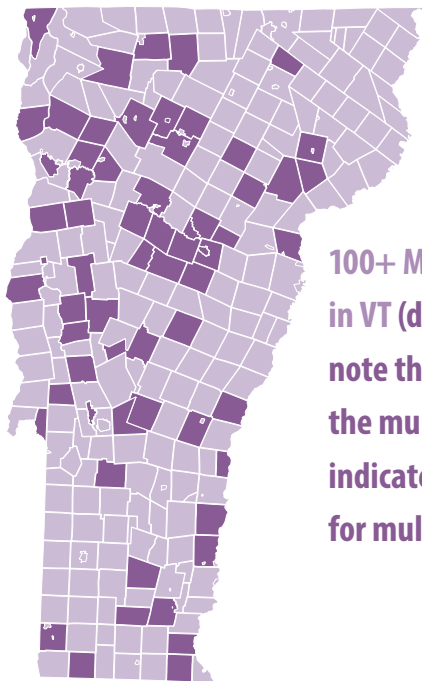
Staff Member Name	Position	Availability %
Ken Robie, PE (32)	Municipal Project Manager	25
David Conger, PE (29)	Municipal Project Manager	25
Rich Tetreault, PE (36)	Municipal Project Manager	25
Chris Lathrop, PE (26)	Municipal Project Manager	25
Brian Breslend, PE (14)	Municipal Project Manager	25
Jon Ashley, PE (29)	Municipal Project Manager	25
Jenny Austin, PE (20)	Municipal Project Manager	25

Qualifications and Experience of the Firm

Understanding of MPM Responsibilities

Municipalities often need assistance in the management and administration of state- and federally-funded projects, whether due to a shortage of staff, lack of expertise, or just lack of available time. MAB projects typically come with processes more complicated and time consuming than a municipally-funded project would normally entail. D&K has extensive experience in all areas of the VTrans Project Development Process, and we understand the challenges any project can face within that process.

Municipal experience:



100+ MAB projects in VT (dark shading, note that many of the municipalities indicated selected D&K for multiple projects)

- 50+ federally-funded municipal projects in New Hampshire and Maine.
- Municipal projects constitute the largest share of D&K's work.

The role of the Municipal Project Manager can vary greatly from project to project depending on the municipality's needs, but the following duties could be required on any given project:

Project Administration:

- **Ensure the municipality follows** the VTrans Project Development Process and adheres to the Municipal Assistance Bureau (MAB) Local Projects Guidebook.
- **Coordinate all project activities** and monitor all aspects of project development while acting as liaison between the municipality, VTrans, other consultants and/or contractors as necessary.
- **Ensure adherence to all federal and state rules and regulations** relative to developing and constructing a project.
- **Identify, obtain approval of, and implement procedures** for facilitating development of the project.
- **Arrange for, participate in, and provide documentation** of all project-related discussions, meetings or hearings.
- **Procure additional consultants.** Prepare Requests for Proposals and Scopes of Services for projects. Participate on the selection team and document the selection process.
- **Perform all contract administration.** Ensure that all provisions of contracts are met and submitted on time and within cost limits.
- **Review all project invoices** for accuracy, completeness and reasonableness. Facilitate municipal approval and payment. Request appropriate reimbursement from VTrans for services completed on a monthly basis.
- **Provide regular progress reports** to the municipality and VTrans with invoices.
- **Review and monitor a master project schedule** to coordinate all activities necessary for completing the project design, obtaining permits and approvals, relocating conflicting utilities, acquiring all rights-of-way, preparing construction bid documents, and completing construction and final documentation.
- **Keep a master project file** which will become the possession of the municipality once the project is complete.

Project Scoping & Design:

- **Ensure all permit mandates, conditions or stipulations** are incorporated into the project design.
- **Obtain waivers of design criteria** if deemed necessary.
- **Review project plans and documents.** Explore design options to improve constructability, reduce costs or expedite construction.
- **Assist with utility and/or railroad issues.** Provide assurances to VTrans that federal and state laws and regulations have been complied with.
- **Review the project for compliance** with all federal, state and local laws, ordinances, regulations and permit requirements, including environmental permitting. Provide certification to VTrans attesting that all requirements have been met and all permits have been obtained.
- **Secure certification** that the design meets all applicable standards, codes and requirements for design and public safety standards.
- **Secure and submit to VTrans documentation by an engineer** registered under the laws of the State of Vermont to practice structural or civil engineering attesting to the required structural capacity requirements for all bridges. Provide certification from an engineer of adherence of all traffic control devices per the Manual on Uniform Traffic Control Devices.
- **Secure and submit a statement to VTrans** as to which permits, agreements and clearances have been secured and which ones are not applicable to the project.

Right-of-Way:

- **Ensure all right-of-way activities conform** with the Uniform Relocation Assistance and Real Property Acquisition Act.
- **Assist the municipality** with property valuations, negotiations and acquisitions, as needed.
- **Provide certification** that all right-of-way issues have been resolved in accordance with applicable federal and state laws and regulations.

Contracting & Construction:

- **Assist in preparing a bid package** for construction that conforms with federal and state regulations. Once bids are received and opened, assist in determining the lowest responsible bid. Prepare contract for municipality with low bidder.
- **Provide administration** of the project during construction.
- **Secure certification** that the project was constructed as designed.

Staff member experience:

- **Selectboard chairs**
- **Selectboard members**
- **Development review board members**
- **Fire chiefs**
- **Small business owners**
- **Municipal engineers**
- **Regional planning commission employees**
- **VTrans employees**

Every project has its challenges. D&K's role is to provide a confident, experienced, qualified project manager dedicated to driving the village, town, or city's project to successful completion.

Example Projects

Following are summaries of relevant projects completed by DuBois & King.



Champlain Parkway City of Burlington

Largest MAB project designed to date

D&K is MPM for a roadway and streetscape project that connects I-89, US 7 and Burlington's City Center, primarily located in the South End. **Key Staff:** John Benson (not on this contract)

- Roadway/Highway
- Bike/Ped
- Stormwater
- Lighting
- Utilities

Contact: Norm Baldwin, Asst. Director of Public Works; 802-863-9094; nbaldwin@burlingtonvt.gov



Project Area

Roundabouts & Road Reconst. Town of Hartford

MAB Process 2 Roundabouts, 1,000 ft of roadway

D&K is MPM for a project that eliminates a traffic signal, improves the roadway and sidewalks, and upgrades stormwater in a commercial area along US 5 and Sykes Mt. Avenue. **Key Staff:** Ken Robie

- Roadway
- Intersections
- Bike/Ped
- Stormwater
- Lighting
- Utilities

Contact: Brannon Godfrey, Town Manager; 802.295.9353 ext. 216; bgodfrey@hartford-vt.org



Existing Conditions

Culvert Replacement Town of Bridport

MAB Funding

D&K is MPM for a project that improves a town highway stream crossing with a larger culvert. **Key Staff:** Jon Ashley

- Bridges and Culverts
- Water Resources

Contact: Joan Eustis, Selectboard Chair; 802-758-2483; bridportdpw@gmavt.net



One Taylor Street Transit Ctr. City of Montpelier

MAB Funding Transit Facility, Pathway, and Parking

D&K is MPM for a project that develops a new, centrally-located transit and housing facility including multiuse pathways and parking. **Key Staff:** Jeff Tucker (not on this contract), Jon Ashley (hazardous materials)

- Transit
- Brownfield
- Retaining Wall
- Water Resources
- Traffic

Contact: William Fraser, City Manager; 802.223.9502; wfraser@montpelier-vt.org



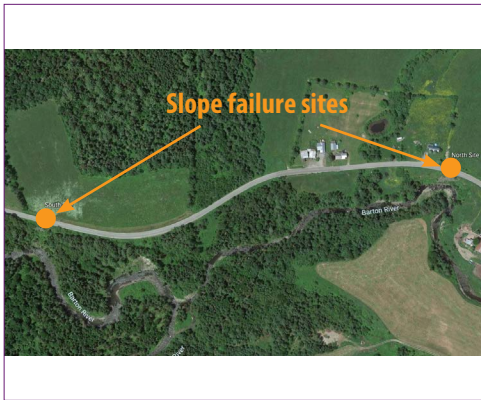
Road and Multimodal Project Town of South Hero

- Roadway
- Bicycle Facilities

MAB Funding 2 miles of roadway reconstruction

D&K served as MPM for a project that reconstructs a town highway and adds bicycle lanes. **Key Staff:** Chris Lathrop

Contact: Jonathan Shaw
Selectboard Chair;
802.372.5552;
jgtshaw@hotmail.com



Slope Stabilization Town of Brownington

- Slope Protection
- Roadway
- Stormwater

MAB Funding

D&K is MPM for a project that addresses significant erosion and stormwater issues on a town-owned roadway. **Key Staff:** Ken Robie

Contact: Beverly White,
Selectboard Chair;
802.754.8401;
browningtontc@comcast.net



Shared Use Pathway Town of Proctor

- Bicycle/Pedestrian
- Stormwater

MAB Funding Shared use path on new alignment

D&K is MPM for a project that increases connectivity within the town. **Key Staff:** Jon Ashley, Jenny Austin

Contact: Stan Wilbur,
Town Administrator;
802.459.3333 x13;
proctor_administrator@comcast.net



Salt Shed City of Vergennes

- Site Design
- Water Quality

MAB Funding

D&K is MPM for a project that improves a town highway stream crossing with a larger culvert. **Key Staff:** Jon Ashley, Jenny Austin

Contact: James Larrow,
Public Works Supervisor;
802.877.3585; vpwvt@vergennes.org

Key Personnel

Ken Robie, PE, has 32 years of experience in transportation engineering with the Vermont Agency of Transportation (VTrans). His background includes project management and design for all types of highway projects. He has experience supervising project teams, setting budgets and schedules, reviewing cost proposals and consultant scopes of work, and coordinating all aspects of project development involving VTrans, FHWA, other state and federal agencies, and the public.



David Conger, PE, has 29 years of experience in transportation and civil engineering for municipal, state, and federal clients. He is Director of the D&K's Site and Land Division. David has served as Project Manager on intersection and corridor scoping studies and on multimodal, roadway, streetscape, park, and site projects.



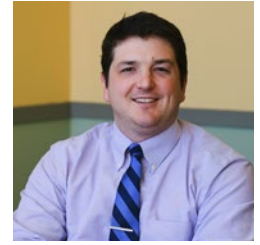
Rich Tetreault, PE, has 36 years of experience as a Project Manager and Civil Structural Engineer overseeing transportation projects throughout New England. Rich was an employee with the Vermont Agency of Transportation (VTrans) for 31 years, ultimately serving as the Deputy Secretary of the Agency.



Chris Lathrop, PE, is a Senior Transportation Engineer and the Highway Department Manager at D&K with 26 years of experience in transportation improvement projects. His professional experience includes the preliminary and final design of a variety of transportation projects for the Vermont Agency of Transportation, New Hampshire Department of Transportation, and numerous municipalities.



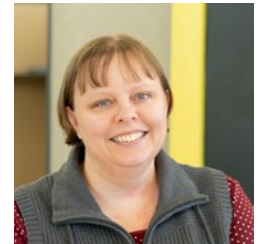
Brian Breslend, PE, is a civil engineer with 14 years of experience providing management and design of transportation projects. Brian's project experience includes roadway, bridges and culverts, rail, sidewalk, pathways, and slope stabilization. He has provided a range of services including the preparation of alternatives analyses; preliminary and final design; cost estimation; plan development; field survey; and utility coordination.



Jonathan Ashley, PE, has 29 years of professional engineering experience, including the planning, management and design of site/civil development projects, municipal infrastructure projects, road, sidewalk, and slope projects, stormwater collection and treatment for municipal, state, local and private clients. Jon is familiar with the VTrans MAB process from current and former salt and sand shed, culvert, sidewalk, roadway, and slope stabilization projects, and he maintains strong working relationships with regulatory officials.



Jenny Austin, PE, has 20 years of experience providing management and design for civil engineering projects. Her experience focuses on traffic engineering to support future growth for public and private entities, as well as transportation planning and design for municipal, regional, and state projects. Jenny has worked on a range of projects, including serving as Assistant Municipal Project Manager overseeing a 1.2-mile roadway reconstruction project.



Roundabouts and Roadway Reconstruction, US 5 and Sykes Mountain Ave, Town of Hartford, White River Junction, VT. Municipal Project Manager working with the Town of Hartford and design engineer for final construction plans, specifications and estimate for two roundabouts at the intersection of US 5 and Sykes Mountain Avenue and the intersection of Sykes Mountain Avenue and Lehman Road. The project also includes roadway approach work, utility coordination, and drainage design. This project follows the VTrans MAB process.

Slope Stabilization, Center Road, Brownington, VT. Municipal Project Manager working with the Town and design engineer to develop a project to mitigate the large amount of sediment flowing into the Willoughby River at two sites along Center Road. The project will stabilize slopes, manage erosion, sediment discharge, and stormwater in the project area. This project follows the VTrans MAB process.

Scrabble Hill Road Stabilization, Duxbury STP MM19(9), Duxbury, VT. Project Manager leading engineering services for this multiphase project to identify options to address ongoing erosion and stabilize the roadway embankments. Firm services include survey, geotechnical investigations, hydrologic and hydraulic analysis, right-of-way and deed information, utility location, alternatives analysis (with cost estimates and recommendations), traffic impact assessment, permitting, preparation of bid documents and engineering assistance during construction. Responsibilities include leading engineering services, and coordination with subconsultants, Town of Duxbury, and VTrans. This project follows the VTrans MAB process.

Smugglers' Notch Scenic Highway Parking Area and Stormwater Improvements, Stowe and Jeffersonville, VT. Project Manager leading the project to design improvements to parking and stormwater management along this sensitive route between Jeffersonville and Stowe on Vermont Route 108, also known as the Smugglers' Notch Scenic Highway. The project includes the design of both on-street and off-street parking areas and the stabilization of roadside ditches and revegetation of woodland and stream buffers throughout this steep and narrow mountain pass. This project follows the VTrans MAB process.

VT 116 Intersection Improvements, Hinesburg, VT. VTrans Project Manager for three intersection improvement projects along VT 116. Oversaw scoping, design, permitting and construction phases of intersection improvements and a new traffic signal at Charlotte Road, intersection improvements at Silver Street, and preliminary design of intersection improvements at CVU Road.

US Route 7 Road Reconstruction, Shelburne and South Burlington, VT. VTrans Project Manager during the final two years of construction of these two projects. The projects consisted of full-depth reconstruction and widening of the most heavily traveled portion of US Route 7. The projects included multiple signalized intersections, installation of a raised median, drainage and stormwater management, utility relocation, bicycle and pedestrian facilities, and landscaping.

Main Street (US Route 2) in Danville Village. VTrans Project Manager during final design, Act 250, stormwater permitting, right of way acquisition and construction of this village revitalization highway project. The project reconstructed Main Street in context with its Village surroundings. The project involved full depth construction of a narrowed roadway and the addition of curb, sidewalk, street lighting, and street trees throughout. It also included a new signalized intersection, a new closed drainage system, stormwater treatment and detention facilities, replacement of existing underground utilities (water and sewer) and undergrounding of existing aerial utilities (power, phone, cable TV, data). The project also included the elimination of a spur of town highway, creating a larger and improved village green. One very unique aspect of the project was the involvement of the Vermont Arts Council and the incorporation of locally crafted granite artwork on the village green and throughout the project area.

Tropical Storm Irene Recovery Route 107, Stockbridge and Bethel, VT. VTrans Project Manager for the design-build recovery effort after Tropical Storm Irene. Provided concurrent design and construction for more than a dozen distinct damage areas along this 10-mile corridor, primarily consisting of streambank, slope, channel and culvert failures that resulted in significant roadway damage, the largest being the total loss of approximately 2,000 feet of roadway and its underlying embankment.

Church Street Marketplace, Burlington, VT. Project Manager assisting the Marketplace, CCRPC, and City DPW to evaluate conditions along one of the premier outdoor pedestrian malls. Three primary task for this effort: topographic survey for two intersections and distressed area in front of City Hall, GIS site evaluation and mapping for maintenance items, and capital planning development for major, minor, and deferred maintenance items.

Construction Phase Services, US Route 7 Segment 6, Brandon, VT. Manager of Construction Phase Services for full-time construction administration and observation for a \$20M roadway improvement project in the heart of downtown Brandon. The project includes reconstruction of more than a mile-long section of US 7 roadway, all associated intersections and two parks. D&K is providing four full-time construction inspectors to support the improvements. The project was developed through the Municipal Assistance Bureau (MAB) of VTrans.

Knight Lane Sidewalk, Williston, VT. Project Manager for the design and construction phase services for over 242 LF of sidewalk in a highly commercial area. The new 5-ft-wide concrete sidewalk is being designed to match the existing connecting sidewalk while considering the existing roadside drainage swale and bordering stormwater detention basin. The design accommodates steep side slopes on either side of the walkway. This project includes survey, right of way, conceptual through final plans, bidding assistance, environmental resource impacts, and cultural resource review. This ongoing municipally managed project is being developed through the VTrans MAB Section.

Master Service Agreement, Mendon, VT. Project Manager assisting the Town of Mendon during recovery efforts following Tropical Storm Irene. Under a Master Service Agreement, provided FEMA coordination for submission of grant applications for six damaged roadway, bridge, and culvert projects.

Neshobe River Overflow Culvert, Brandon, VT. Project Manager for design of an overflow culvert to mitigate flooding of US Route 7 in downtown Brandon under a Hazard Grant Mitigation Program (HGMP) grant. Significant storm events caused overtopping of the roadway by the Neshobe River. A preliminary feasibility study was advanced with updated hydraulics and inlet control details to provide a

three-sided precast structure that prevents flooding at the 100-year design event. The design integrated hydraulic requirements with a tight urban site to develop a geometry and construction details protecting adjacent structures and utilities while limiting ledge removal and property acquisition. The project fast-tracked permitting, design, and grant modifications to initiate construction in advance of impending highway work in the Town. Construction management services were continued for submittal and field condition reviews and near full-time construction inspection services. Kept client and public apprised of project status through daily logs, materials measurement, pay requisition review and biweekly contractor meetings.

Burlington Town Center, Burlington, VT. Project Manager assisting City Economic Development Office and Department of Public Works to evaluate \$28 million worth of public infrastructure improvements associated with the redevelopment of a major urban mall. Initial tasks involved the review of concepts and construction estimates by the developer. Second tasks were to independently vet the concepts and develop feasible construction cost estimates for necessary work to meet the desired streetscape and utility improvements. Final evaluation provided CEDO and the City with a basis and assumptions for what could be accomplished with available funding leading to a successful ballot measure.

Gentes Road Bridge, Town of Essex, VT. Civil Engineer for the investigation and rehabilitation of deteriorated deck and concrete abutments at Bridge No. 20, Gentes Road over New England Central Railroad off Route 2A. The abutments were originally constructed in 1910 and were deteriorating due to seasonal freeze thaw cycles. Remedial work consisted of deteriorated concrete removal, new concrete facing, new backwalls and water diversion at bridge seats. Project tasks included field investigation, conceptual design, and final design.

FRP Implementation, Sydney Drive, Essex, VT. Project Manager for conversion of an open stormwater retention pond to a subsurface manifold piping and stone retention facility with an underlying treatment media developed by University of New Hampshire Stormwater Center faculty. The project is an implementation of the Indian Brook Flow Restoration Plan and a pilot treatment study in preparation of future Lake Champlain Phosphorus TMDL requirements.



Rich Tetreault, PE
Municipal Project Manager

Years of Experience: 36

Years with D&K: 1

Education: B.S., Civil Engineering, University of Vermont, 1985

Registrations: Professional Engineer: VT 5707, NH 15693, ME 15618
NHDOT LPA Certification: 2160

Deputy Secretary and Chief Engineer, Vermont Agency of Transportation. Served as the VTrans executive staff member overseeing the agency. Responsible for oversight of the highway division and managed the agency's use of the design-build contracting method on over a half-dozen large bridge projects. Served as one of two members of the VTrans Unified Command during Vermont's response to Tropical Storm Irene. Rich's leadership at the Agency led to a significant reduction in Vermont's percentage of structurally deficient bridges on interstate and state highways by using innovative programs such as the Accelerated Bridge Construction method.

Bridge Inspection Team Leader and Chief Bridge Inspector, VTrans. Managed the NBIS program and the statewide maintenance bridge program at VTrans and performed Rail Bridge Inspections for the agency. Responsible to inspect, report on, and develop emergency repairs for hundreds of local and state bridges across Vermont working hand in hand with bridge owners.

Public Assistance Officer, VTrans, Statewide. Served as Vermont's State Public Assistance Officer under a four-year Presidential emergency declaration administering the FEMA Public Assistance disaster relief program. This work provided direct service to hundreds of municipalities across Vermont to ensure that federal disaster response and recovery funds were fully realized.

Corridor Studies, Project Management, and Public Information Officer, VTrans, Essex, Bennington, Colchester. Project Manager on highway corridor studies focusing on solutions for safe and efficient mobility for all users along Susie Wilson Road in Essex as well the intersection of VT67A and Silk Road in Bennington. Also served as Project Manager on multiple projects providing Public Information Services to include the Diverging Diamond Interchange and the I89 Bridge Bundle in Colchester.

NH 12A Bridge over NH Railroad, Lebanon, NH.

Principal/QA Manager for the evaluation of a consulting firm's design of a precast concrete arch carrying NH 12A over a railroad. D&K's study concluded a smaller precast concrete arch or a conventional steel stringer and concrete deck bridge, on alignment would result in significant construction cost savings to NHDOT and the City and D&K proceeded to provide design services. Responsible for oversight of firm services and quality assurance.

Lahaye Drive Pathway, Lebanon, NH.

Principal/QA Manager for survey, design, and permitting of an approximate 1000-ft section of multi-use path adjacent to the heavily-used Lahaye Drive. Lahaye Drive connects Mount Support Road to NH 120 and provides access to Dartmouth-Hitchcock Medical Center. At the Mount Support intersection, TAP-Funded improvements will connect to the existing bike and pedestrian facilities with alterations to traffic signals. Responsible for oversight of firm services and quality assurance.

West Main Street Sidewalks, Hillsborough, NH.

Principal/QA Manager for study, design, permitting assistance, and construction phase services for a Transportation Alternatives Program project for the construction of approximately 0.8 mi of sidewalk and appurtenant pedestrian infrastructure. The project includes the design of ADA-compliant sidewalk, locating and designing crosswalks (including ADA tip-downs), and signage. Responsible for oversight of firm services and quality assurance.

NH 130, Sidewalk and Pedestrian Bridges, Brookline, NH.

Principal/QA Manager for study, design, permitting assistance, and construction phase services for a Transportation Alternatives Program project for the construction of approximately 0.5 mi of sidewalk and appurtenant pedestrian infrastructure. The project also includes installation of two 70-ft-span prefabricated truss bridges. Responsible for oversight of firm services and quality assurance.

Roadway Reconstruction and Multimodal Facilities, South Hero, VT. Municipal Project Manager for a project that reconstructed two miles of roadway and reconfigure the road to accommodate bike lanes. Specific responsibilities included advising the Town regarding the MAB Project Development Process, preparing a request for proposals, soliciting engineering proposals for design of the project, reviewing the engineering consultant's progress as the design developed, acting on behalf of the Town for right of way negotiations, and facilitating public meetings and discussions.

Great Streets BTV, Burlington, VT. Senior Transportation Engineer for the design implementation of reenvisioned downtown Burlington into a vibrant, walkable, and sustainable urban center. Efforts are focused twofold. The first is in assisting and vetting team design standards being established for the downtown core. The second is the development of design documents to meet these goals with the reconstruction of two blocks of Main Street and City Hall Park. Responsible for quality assurance reviews of deliverables and quantity guidance.

Road Improvements, Route 140, Middletown Springs, VT. Project Manager/Senior Highway Engineer for a 2,000-ft-long roadway improvement project along Vermont Route 140. This stretch of road was experiencing side slope erosion, inadequate drainage, and an inordinate amount of maintenance problems. Project elements included reclaim and paving roadway, slope stabilization, profile and superelevation modifications, and drainage improvements. Responsible for plan development, typical sections, culvert and cut-slope recommendations, and engineering services during construction.

Sidewalk Design, Route 116, Safe Routes to School Program, VTrans, Hinesburg, VT. Project Manager responsible for the preliminary and final design of a 5-ft-wide concrete sidewalk along Route 116. The sidewalk includes a 5-ft green strip beginning at the Hinesburg Elementary School and extends 950 ft along the west side of Hinesburg Road to Charlotte Road. The project included ROW acquisition, utility relocation, crosswalks, pedestrian ramps, concrete curbing, drainage improvements, environmental permitting, erosion control narrative, and parking and driveway improvements.

Sidewalk Design, Mt. Philo Road, Shelburne, VT. Project Manager responsible for the preliminary and final design of a 5-ft-wide concrete sidewalk. The sidewalk, which includes a 5-ft green strip, begins at Wild Ginger Road and extends 2,500 ft along the east side of Mount Philo Road to Falls Brook Road. The project included crosswalks, pedestrian ramps, concrete curbing, drainage improvements, environmental permitting, erosion control narrative, and utility relocation coordination. The project followed the VTrans MAB process.

Colchester Ave Sidepath, City of Burlington, VT. Project Manager for reconstruction and widening of 2100' of sidepath. Coordinated with City of Burlington and VTrans, utility relocation coordination, ROW plans and overall technical design of the project. The project also consists of reconstructing pedestrian ramps for ADA compliance. The project follows the VTrans MAB process.

Webster Road Bicycle and Pedestrian Path, Shelburne, VT. Project Manager for conceptual and final design for 1.1-mile-long bicycle and pedestrian path along Webster Road in Shelburne. The project extends the path from the entrance of the Boulder Hill Development at Boulder Hill Drive, to the west along the north side of Webster Road, to its intersection with Route 7. The project followed the VTrans MAB process.

Three Rivers Transportation Pathway, St. Johnsbury, VT. Senior Engineer for engineering services for a new 1.1-mile transportation path that included design upgrades to the WACR-CRD rail line/Bay Street grade crossing. The project included the retrofitting of a former rail bridge for pedestrian traffic. Responsible to oversee design of pathway alignment and alignment of rail crossing and evaluating alternatives to minimize impacts to adjacent roadways and properties, while meeting VTrans bike and pedestrian criteria. The project followed the VTrans MAB process.

Roadway and Safety Engineering Services Retainer Contract, VTrans, Statewide, VT. Project Manager for on-call retainer contract with the Vermont Agency of Transportation to assist with the development of roadway, intersection, and other safety related transportation projects throughout the State.

Bethel Mountain Road Slope Stabilization, Rochester, VT. Project Manager and Manager of Construction Phase Services for the evaluation, survey, permitting and final design of a 2,800-LF emergency roadway repair project. The project implemented long-term repairs to sections of an embankment that failed during a heavy spring rainfall and snowmelt event that closed the road. Improvements included upgraded drainage systems and structures, slope repair, and roadway reconstruction and minor realignment. The road is a valuable mountain connector road between VT 100 and VT 12 that required rapid reopening and stabilization of the roadway, which dictated a significantly compressed schedule. The project was managed by the Town of Rochester and received FHWA-ER funding. Led day-to-day development of D&K's services, provided senior level engineering, and coordinated with the client and state and federal regulators

US 2 Pedestrian Improvements, East Montpelier, VT. Project Manager for design of pedestrian enhancements as recommended in the Town's Scoping Study, also prepared by D&K. Approximately 2,000 ft long, the project includes the design of sidewalk and crosswalk improvements, relocation of a water line and hydrant, consolidation of driveway openings, property owner coordination to understand and mitigate concerns, and extensive VTrans coordination due to location along a state highway. The project is largely being funded through a federal and administered through the VTrans Municipal Assistance Bureau (MAB).

Sidewalks and Pedestrian Improvements, Fairfield, VT. Project Manager for design and of sidewalks, streetscape enhancements, and other pedestrian facilities in the core of the village. Improvements address unsafe conditions that include minimal pedestrian facilities, ill-defined parking lots, and wide unmarked roadways with narrow shoulders. Responsible for management of scheduling and budgeting of firm resources; coordination of VT Construction General, VT ANR Wetlands, and VTrans 11/11 permits; and design of horizontal and vertical alignments. This project receives federal, state, and municipal funding and is administered by the VTrans Municipal Assistance Bureau.

Warners Corner Sidewalk Project, Colchester, VT. Project Engineer for design and construction phase services for 4,725 lf of new sidewalks along portions of the four roadways intersecting at Warners Corner. Scope included survey, right-of-way documentation, conceptual plans, utility relocations, preliminary and final plans, landscaping, cost estimates, and permitting. The project was a municipally managed project developed through the VTrans LTF Section. Responsibilities included preparation of final plans, review and drafting of the storm drain network (catch basins, culverts, and pipes), right-of-way plan preparation, and preparation of quantity and cost estimates.

Crescent Connector Road, Essex Junction, VT. Transportation Engineer for \$6.5 million FHWA-funded Crescent Connector roadway, an 1,800 LF bypass around the Five Corners intersection. The project included coordination of five traffic signals and five railroad crossings. Responsible for redesign review and finalizing details. The project follows the VTrans MAB process.

Roadway and Safety Engineering Contract, VTrans, Statewide, VT. Project Manager for on-call contract to assist with the development of roadway, intersection, and other safety-related transportation projects.

Montpelier-Berlin Shared Use Pathway, Montpelier, VT. Design Engineer for Project Development of 3.8-mile-long, 10-ft-wide shared use pathway. Responsible for development of right of way and final design drawings. The project followed the VTrans MAB process.

Brandon STP 2033(27), Carver Street Crossing, VTrans Rail, Brandon, VT. Project Manager/Senior Engineer to perform a safety evaluation of a track crossing to evaluate the vehicle speed limits and a skewed crossing. Determined horizontal geometry in relation to the track. Designed a new crossing layout including gates, signals, signal cabinet, and an active warning system. Prepared roadway vertical geometry improvements, drainage improvements, and intersection pavement markings.

Jonathan Ashley, PE
Municipal Project Manager

Years of Experience: 27

Years with D&K: 5

Education: B.S. Environmental Engineering, Rensselaer Polytechnic Institute, 1992; M.S. Course, Advanced Hydrology, Kansas State University, 2001; M.S. Course, Physical and Chemical Hydrogeology, University of Massachusetts, Lowell, 1996; M.S. Courses, Wastewater Treatment and Engineering; Open Channel Hydraulics, University of New Haven, Connecticut, 1994-95

Registrations/Certifications: Professional Engineer: VT 7350, NH 9709, NY 79818; Certified Vermont Class 2 Public Water System Operator; 40-hour OSHA HAZWOPER Course; 8-hour OSHA HAZWOPER Course; Firefighter I Certification

Basin Harbor Road Culvert Replacement, MPM Services, Bridport, VT. Municipal Project Manager for the replacement of a deteriorating corrugated metal pipe culvert that carries the West Branch of the Dead Creek and drains to Otter Creek. The culvert is to be replaced with a precast concrete box culvert. Responsibilities included managing the selection of the consultant and the design process through all phases. Assisted the Town and design engineer with strategies to streamline the project schedule to allow the culvert replacement to be constructed prior to upcoming planned utility poles relocation in this area. Responsibilities also include supporting the Town through the selection of the contractor and construction of the replacement culvert. The project is being developed in accordance with the VTrans Municipal Assistance Bureau process.

Salt Shed, MPM Services, Vergennes, VT. Municipal Project Manager for the study through bid phase engineering services for a new City salt storage structure.

Beaver Pond Shared Use Path Project, MPM Services, Proctor, VT. Co-Municipal Project Manager (MPM) to assist the Town with the design phase of the shared use path project.

Salt Shed, Proctor, VT. Project Manager for the study through bid phase engineering services for a new Town salt storage structure. The Town had predetermined preference for a pre-engineered building. Evaluated foundation alternatives. Coordinated with the Town to compare structure and vendor alternatives and select the preferred structure.

Enosburg Salt and Sand Shed, Enosburg, VT. Senior Civil Engineer responsible for leading conceptual design and permitting to construct a new municipal salt and sand shed at the Town Highway Garage on VT Route 108. Developed structure alternatives to accommodate the 5,000 yards of sand and 225 tons of salt that the Town uses annually. Services included assessment of structure alternatives and assessment of natural resources features, including wetlands, floodways,

and cultural resources for NEPA approval. The project follows the VTrans MAB process.

Salisbury Village Lighting and Sidewalk Study, ACRPC, Salisbury, VT. Project Manager in-responsible-charge of D&K's evaluation and planning services. Served as primary contact for Town. Evaluated existing conditions of safety and accessibility for pedestrians, presenting multiple alternatives for walkways and lighting options for the village center.

US Route 7 Segment 6 Construction Inspection, Brandon, VT. Senior Environmental Engineer for a supplementary site investigation to precharacterize petroleum contamination associated with three known and two former hazardous waste sites in the vicinity of a \$20M roadway and underground infrastructure reconstruction project through the heart of downtown Brandon. The road reconstruction project is largely being funded through a federal and administered through the VTrans Municipal Assistance Bureau.

Bethel Mountain Road Slope Stabilization, Rochester, VT. Project Director for evaluation, survey, permitting and final design for a 2,800-LF emergency roadway repair project. The project was managed by the Town of Rochester and receives FHWA-ER funding. Responsible for providing quality assurance review, firm resource scheduling and budgeting oversight, geotechnical subconsultant coordination, and client coordination.

Creek Road Streetscape Planning, Design, and Reconstruction, Addison County Transit Resources, Middlebury, VT. Senior Project Manager for Town road reconstruction design, drainage improvements, high school athletic fields and facilities, Addison County Transit Resources (ACTR) headquarters planning, and sidewalk projects on Creek Road with various funding sources including VTrans Local Transportation Fund (LTF); town, school, and boosters; and Federal Highway Administration (FHWA).

Beaver Pond Shared Use Path Project, MPM Services, Proctor, VT. Municipal Project Manager (MPM) to assist the Town with the design phase of the shared use path project. Responsibilities include preparation of a design engineering services RFP, served on the selection committee meeting, coordinated meetings with the Path Committee including engaging Doodle Polls for collecting input from meeting attendees and attended meetings; review of design engineers' invoices; and has been a project liaison between VTrans and the design engineer.

Bicycle and Pedestrian Scoping Study, Weston, VT. Project Manager for a study to evaluate opportunities to improve the streetscape and encourage walking and cycling within the village's Route 100 corridor. The project receives funds administered by the VTrans Municipal Assistance Bureau.

Planning Study for the Intersection of States Prison Hollow Road and Monkton Ridge Road, ACRPC, Monkton, VT. Project Manager assisting with the planning study and conceptual plans for improvements to the States Prison Hollow Road and Monkton Ridge Road intersection. This project follows the VTrans MAB process. Project responsibilities include attending committee meetings, reviewing and evaluating the intersection, preparation of conceptual plans, and general project management tasks. The project goal will be to have a conceptual design for this intersection, which includes straightening the States Prison Hollow Road approach of the intersection, associated grading needed to tie into existing conditions, and the adjacent side street, and other incidentals for the project.

US 2/Oak Hill Road/North Williston Road Scoping Study, Williston, VT. Provided development of scoping study for the CCRPC at an intersection which is known to be a high crash location. Alternatives developed included signalization of the intersection and a new roundabout. Project tasks include assessment of existing conditions, alternatives investigation, development of alternatives in AutoCAD, preparation of the scoping report, and assistance with the selection of a preferred alternative.

East Darling Hill Road Bicycle and Pedestrian Scoping Study, Town of Burke, VT. Project Engineer for a scoping study to develop alternatives to make East Darling Hill Road more bicycle and pedestrian-friendly. The study developed and evaluated various alternatives including variations of bike lanes and sharrow markings and two different multi-use path options. Responsibilities included review of development and evaluation of alternatives, evaluation matrix preparation, attending and presenting at local meetings, and preparation of the Scoping Study report.

Barre-Montpelier Road Diet, VTrans, Berlin, VT. Project Engineer on a pilot project for VTrans to support the monitoring and performance evaluation of the Barre-Montpelier Road Diet project. Responsible for public outreach process and reviewing summarizing hundreds of survey responses, development of a Road Diet Evaluation Matrix with scoring criteria, preparation of a Road Diet Assessment Report, traffic analyses, before and after evaluations, and project management coordination with VTrans. This project was featured in FHWA's Innovator newsletter.

US 7 Segment 6 Reconstruction Project Local Project Management Services, Brandon, VT. Assisted with all aspects of the Local Project Manager role overseeing a 1.2-mile roadway reconstruction project. Responsibilities included being a liaison between the design engineer, municipality, and VTrans; attended and prepared notes at public meetings; review of plans; assist the Town through the right of way phase, including assistance with waiver valuation forms; compiling, reviewing, and submitting invoices to VTrans from the engineering consultant and subconsultants for project design; and performed other general project management LPM tasks including project coordination, scheduling meetings, providing design-related information to new Town staff, and other necessary tasks.

Springfield Schools Consolidation Traffic Study, Springfield, VT. Conducted traffic impact study to analyze traffic impacts of school consolidation. Tasks included trip generation, capacity analyses, queuing analyses, evaluation of safety concerns, evaluation of existing pedestrian facilities, recommendations for lessening traffic impacts at five intersections, and summarizing these into a report. Conducted all aspects of this project including attendance and participation in public meetings and the Act 250 hearing.