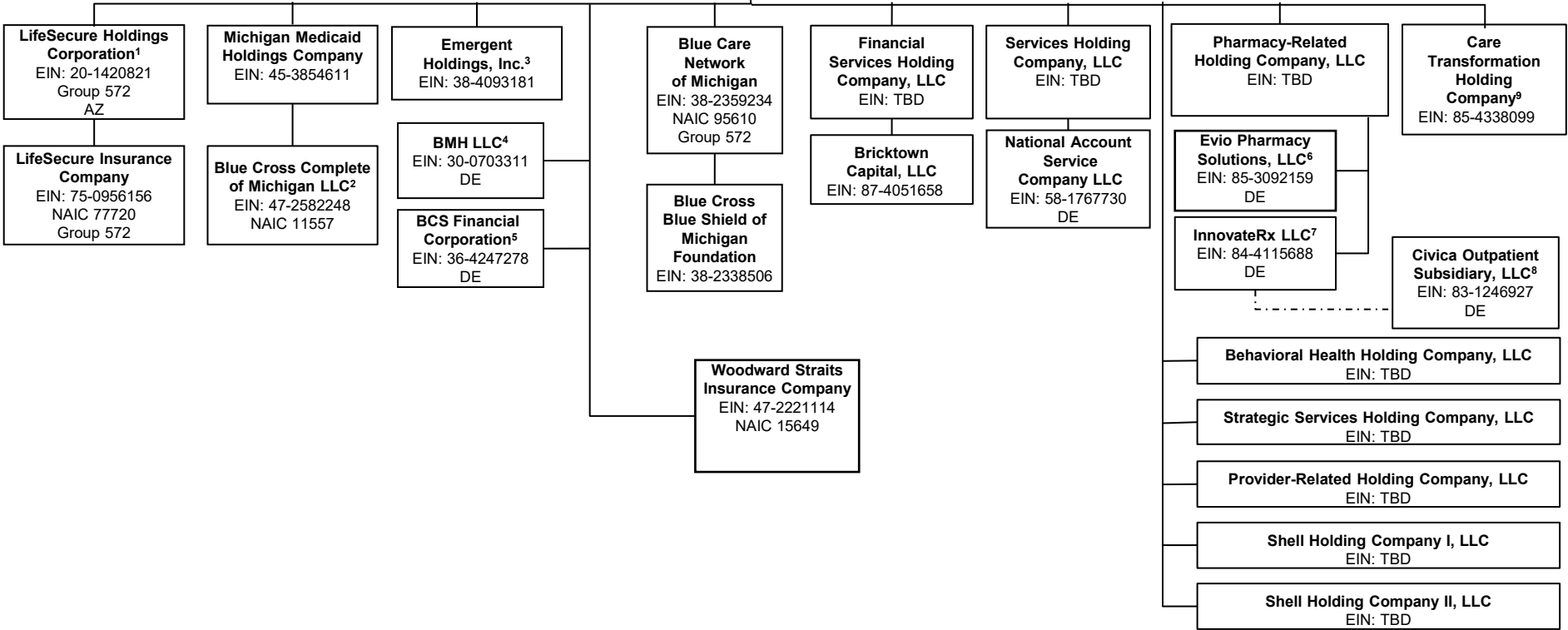


Exhibit B-1

Pre-Closing Organizational Chart of the Applicant and its Affiliates

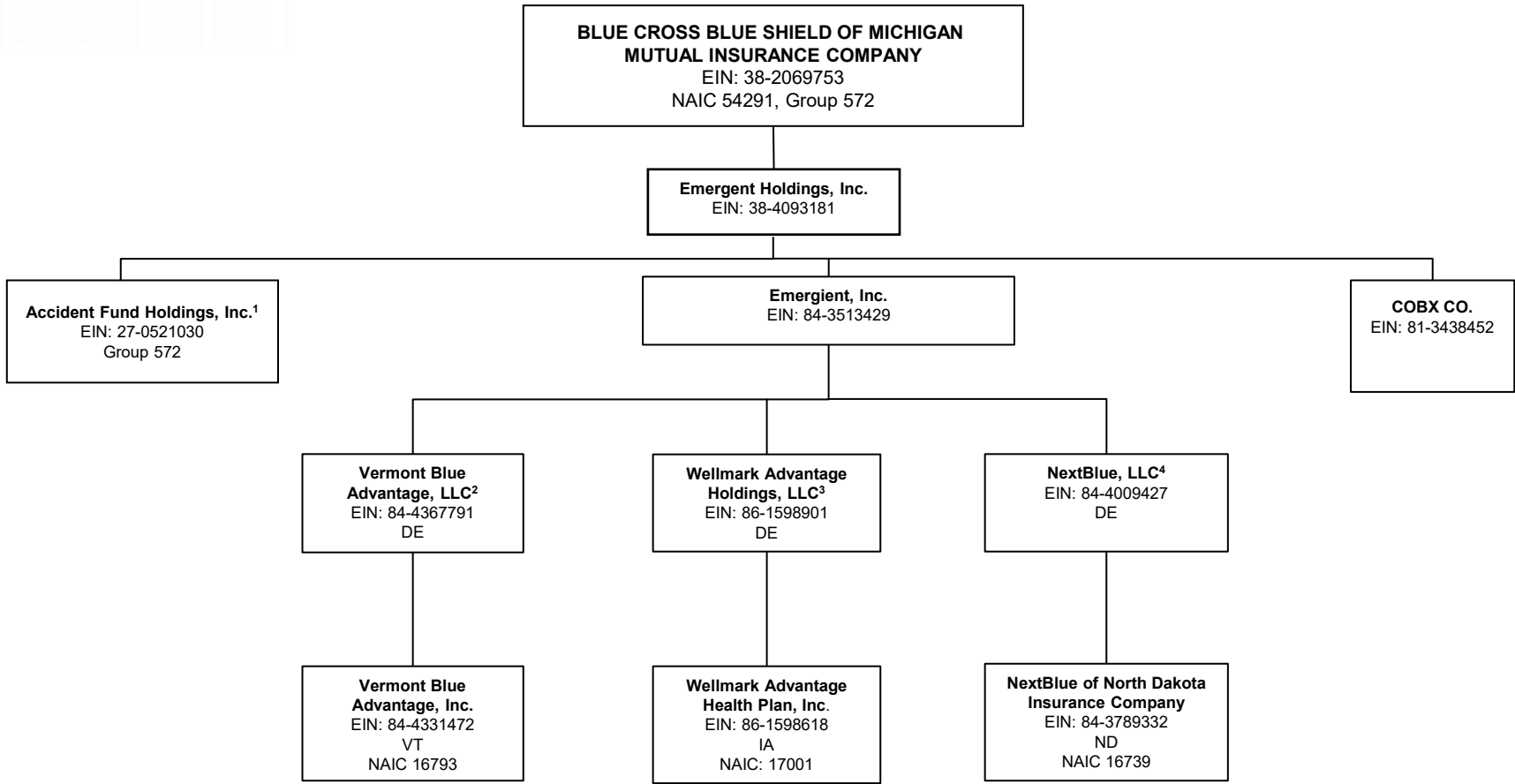
Please see attached.

**BLUE CROSS BLUE SHIELD OF MICHIGAN
MUTUAL INSURANCE COMPANY**
EIN: 38-2069753
NAIC 54291, Group 572



1 BCBSM owns an 80% stake of LifeSecure Holdings Corporation with the remaining 20% owned by BCS Financial Corporation.
 2 Michigan Medicaid Holdings Company owns a 50% stake of Blue Cross Complete of Michigan LLC. Remaining 50% stake is owned by AmeriHealth Caritas Health Plan.
 3 See pg. 2 for additional subsidiaries.
 4 See pg. 4 for additional affiliates.
 5 See pg. 5 for affiliated companies.
 6 Pharmacy-Related Holdings Company, LLC owns a 20% stake of Evio Pharmacy Solutions, LLC.
 7 Pharmacy-Related Holdings Company, LLC owns a 9.99% stake of InnovateRx LLC.
 8 Innovate Rx LLC does not have an equity ownership in Civica Outpatient Subsidiary, LLC, which is a non-profit company. However, Innovate Rx LLC does have the right to appoint five managers to Civica Outpatient Subsidiary, LLC's board of managers which can range from 6 to 10 managers.
 9 See pg. 6 for additional subsidiaries.

- Blue Cross Blue Shield of Michigan Bargaining Unit Internal Health Benefit Trust**
EIN: 84-6869872
- Blue Cross Blue Shield of Michigan Non-Bargaining Unit Internal Health Benefit Trust**
EIN: 84-6871980
- Blue Cross Blue Shield of Michigan Long-Term Disability Trust**
EIN: 81-6482696
- Blue Cross Blue Shield of Michigan Employees' Retirement Master Trust**
EIN: 30-1140600
- Blue Cross Blue Shield of Michigan 401 (K) MASTER TRUST**
EIN: 38-2069753-096



1 See page 3 for additional subsidiaries and affiliates.

2 Emergent, Inc. owns a 51% stake in Vermont Blue Advantage LLC

3 Emergent, Inc. owns a 51% stake in Wellmark Advantage Holdings, LLC

4 Emergent, Inc. owns a 51% stake in NextBlue, LLC.

**BLUE CROSS BLUE SHIELD OF MICHIGAN
MUTUAL INSURANCE COMPANY¹**
EIN: 38-2069753
NAIC 54291, Group 572

Emergent Holdings, Inc.
EIN: 38-4093181

Accident Fund Holdings, Inc.
EIN: 27-0521030
Group 572

Accident Fund Insurance Company of America
EIN: 38-3207001
NAIC 10166
Group 572

Fundamental Agency, Inc.
EIN: 32-0550098
WI

Affinity Services, LLC
EIN: 26-4728075

AF Global Capital, Ltd.
Company No. 09789424
United Kingdom

Miracle Nova I (US) LLC
EIN: 83-4598059
DE

Miracle Nova II (US) LLC
EIN: 47-4391033
DE

AmeriTrust Group, Inc.
EIN: 38-2626206

Accident Fund General Insurance Company
EIN: 20-3058200
NAIC 12304, Group 572

Accident Fund National Insurance Company
EIN: 20-3058291
NAIC 12305 Group 572

United Wisconsin Insurance Company
EIN: 39-0941450
NAIC 29157, Group 572
WI

Third Coast Insurance Company
EIN: 36-4072992
NAIC 10713, Group 572
WI

CompWest Insurance Company
EIN: 20-1117107
NAIC 12177, Group 572
CA

Meadowbrook Inc.
EIN: 38-1798156

ProCentury Corporation
EIN: 26-3468547

Crest Financial Corporation
EIN: 33-0000063
NV

Star Insurance Company
EIN: 38-2626205
NAIC 18023

Preferred Insurance Agency, Inc.
EIN: 04-3279903
MA

Meadowbrook Intermediaries, Inc.
EIN: 38-2573624
NY

Commercial Carriers Insurance Agency, Inc.
EIN: 95-3328008
CA

Interline Insurance Services, Inc.
EIN: 94-2828166
CA

Ameritrust Insurance Corporation
EIN: 65-0661585
NAIC 10665

Florida Preferred Administrators, Inc.
EIN: 65-0150469
FL

Mackinaw Underwriters, Inc.
EIN: 71-1051888

Liberty Premium Finance, Inc.
EIN: 33-0498603
CA

American Highway Carriers Association
EIN: 33-0000979
CA

ATG I, LLC
EIN: 83-3258073

TPA Insurance Agency, Inc.
EIN: 04-3296168
MA

Meadowbrook Insurance, Inc.
EIN: 63-1223412
AL

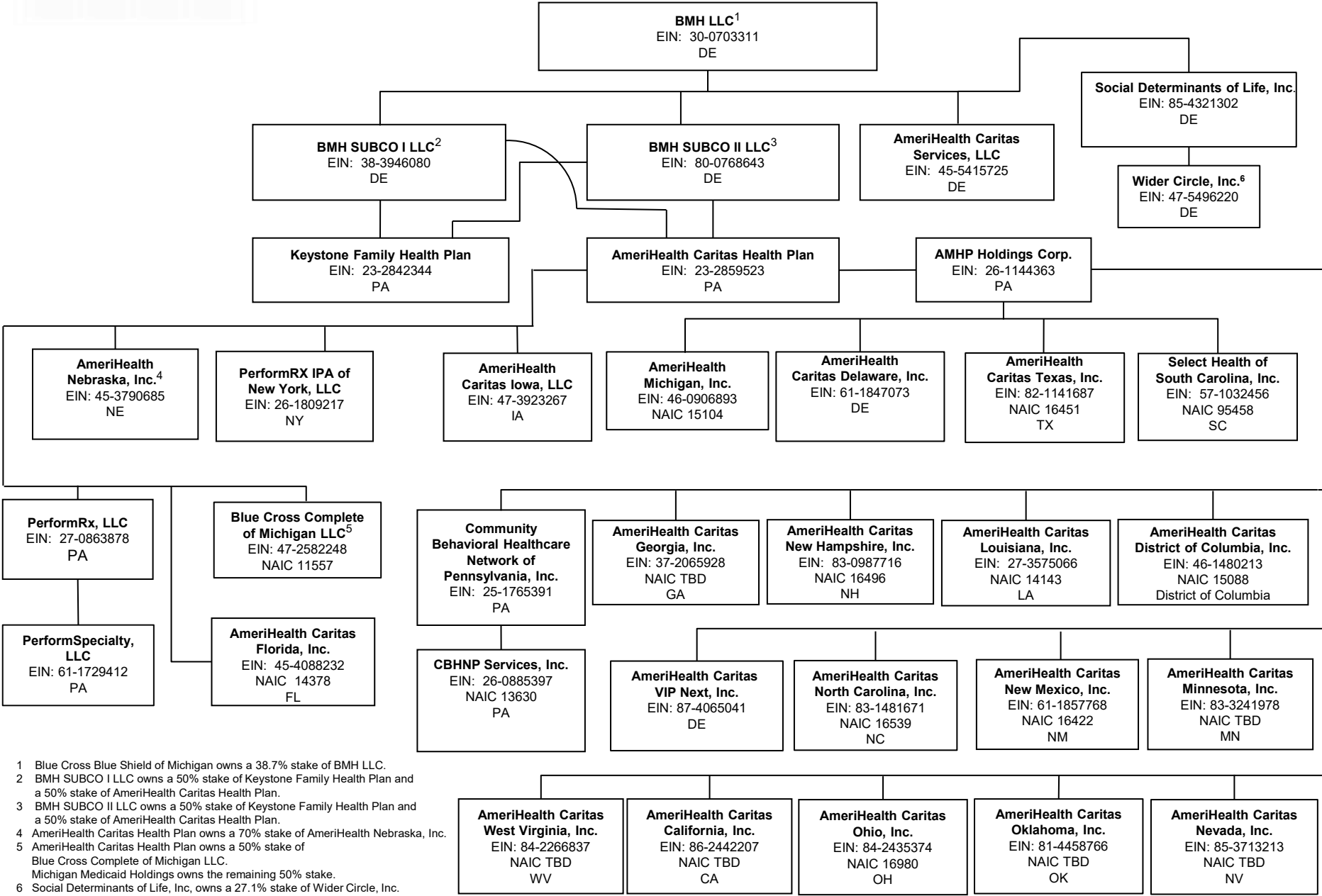
Williamsburg National Insurance Company
EIN: 33-0208084
NAIC 25780

Century Surety Company
EIN: 31-0936702
NAIC 36951
OH

Mackinaw Administrators, LLC
EIN: 38-3243249

ProCentury Insurance Company
EIN: 94-6078027
NAIC 21903

All entities that do not reflect a particular state name or abbreviation are domiciled in Michigan.

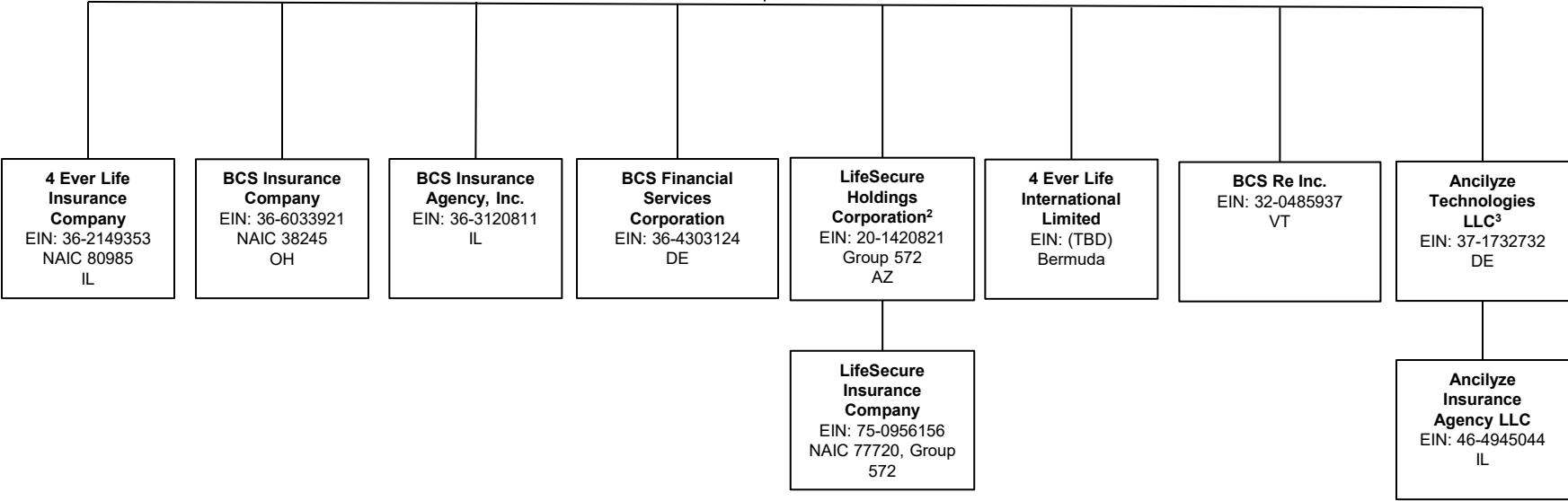


1 Blue Cross Blue Shield of Michigan owns a 38.7% stake of BMH LLC.
 2 BMH SUBCO I LLC owns a 50% stake of Keystone Family Health Plan and a 50% stake of AmeriHealth Caritas Health Plan.
 3 BMH SUBCO II LLC owns a 50% stake of Keystone Family Health Plan and a 50% stake of AmeriHealth Caritas Health Plan.
 4 AmeriHealth Caritas Health Plan owns a 70% stake of AmeriHealth Nebraska, Inc.
 5 AmeriHealth Caritas Health Plan owns a 50% stake of Blue Cross Complete of Michigan LLC. Michigan Medicaid Holdings owns the remaining 50% stake.
 6 Social Determinants of Life, Inc. owns a 27.1% stake of Wider Circle, Inc.

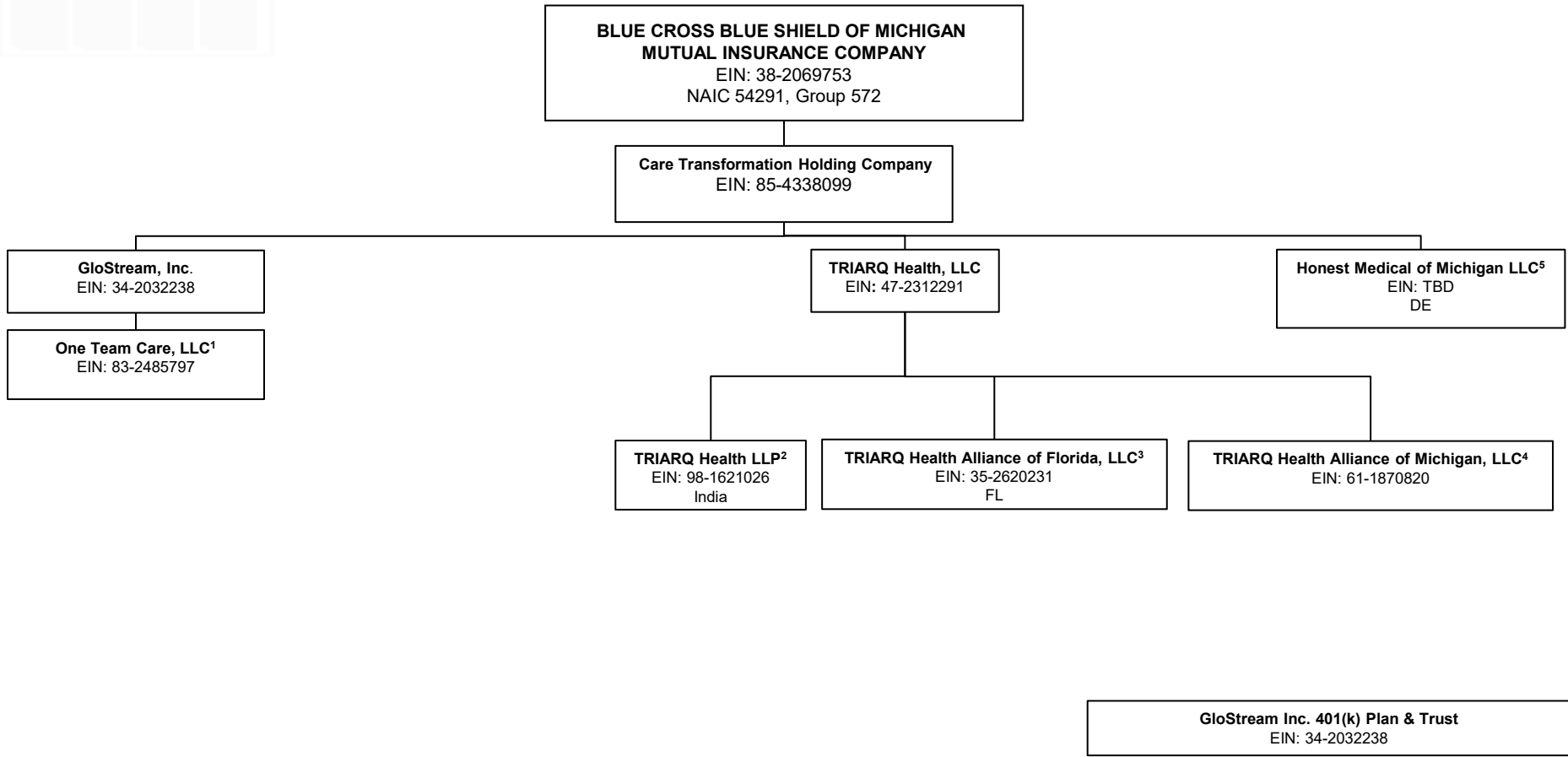


**BLUE CROSS BLUE SHIELD OF MICHIGAN
MUTUAL INSURANCE COMPANY**
EIN: 38-2069753
NAIC 54291, Group 572

BCS Financial Corporation¹
EIN: 36-4247278
DE



1 Blue Cross Blue Shield of Michigan owns 10.1% of BCS Financial Corporation Accident Fund Insurance Company of America owns 3.56% of BCS Financial Corporation.
2 BCS Financial owns a 20% stake in LifeSecure Holdings Corporation with the remaining 80% owned by BCBSM.
3 BCS Financial Corporation owns 50% of Ancilyze Technologies LLC.



1 GloStream Inc. owns a 50% stake in One Team Care, LLC.
2 TRIARQ Health, LLC owns a 99.99% stake in TRIARQ Health LLP.
3 TRIARQ Health, LLC owns a 90% stake in TRIARQ Health Alliance of Florida.
4 TRIARQ Health, LLC owns a 68% stake in TRIARQ Health Alliance of Michigan.
5 Care Transformation Holding Company owns a 19.9% stake in Honest Medical of Michigan LLC