

Facility Planning for Justice-Involved Youth: Stakeholder Working Group Notes

May 20th, 2024, 4:00 p.m. - 5:00 p.m.

[Join Virtually](#)

Join In Person: Pine Conference Room at the Waterbury State Office Complex,
280 State Drive, Waterbury, VT 05671

Brief Introductions

1. Tyler Allen, Adolescent Services Director at FSD/DCF – Yes
2. Elizabeth Morris, Juvenile Justice Coordinator at FSD/DCF – Yes
3. Ali Dieng, Regional Manager for Building Bright Futures
4. Geoffrey Pippenger, Director of Policy and Planning for DCF
5. Andrew Pitts, TreanorHL
6. Chris Huston, Vice President of Preconstruction at ReArch Company
7. Melanie D'Amico, Specialized Services Manager for DCF/FSD
8. Rachel Edens, Director of Race, Gender, Equity, and Accessibility for DCF
9. Jennifer Garabedian, Development Disabilities Division Director at DAIL
10. Lauren Highbee, Deputy Advocate, Office of the Child, Youth and Family Advocate for Vermont
11. Matthew Bernstein, Child Youth and Family Advocate for Vermont
12. Jennifer Poehlmann, Executive Director, Vermont Center for Crime Victims Services
13. Kara Casey, Vermont Network Against Domestic and Sexual Violence
14. Tabrena Karish, Project Manager, BGS
15. Katherine O'Day, Statewide Program Coordinator for Youth in Transition
16. Haley McGowan, Pediatric Psychiatrist, UVMHC & Department of Mental Health
17. Michael Biama, Vice President of Development & Property Management for ReArch Properties
18. Marshall Pahl, Deputy Defender General and Chief Juvenile Defender
19. Penny Sampson, Council for Juvenile Justice Administrators (a national organization focused on administrators for justice involved youth)
20. Dana Robson, Operations Chief at DMH
21. Anthony O'Meara, Member of the public, resident of Newbury.
22. Karen Vastine, Chair of the Council of Equitable Youth Justice, Member of the Group.
23. Laury Burriss, Clinician at UVMHC
24. Sandi Yandow, Vermont Federation of Families for Children's Mental Health
25. Sam Beall, Duncan Wisniewski Architecture
26. Taryn Barrett, Duncan Wisniewski Architecture
27. Jennifer Garabedian, Development Disabilities Division Director at DAIL
28. Cheryle Wilcox, Department of Mental Health

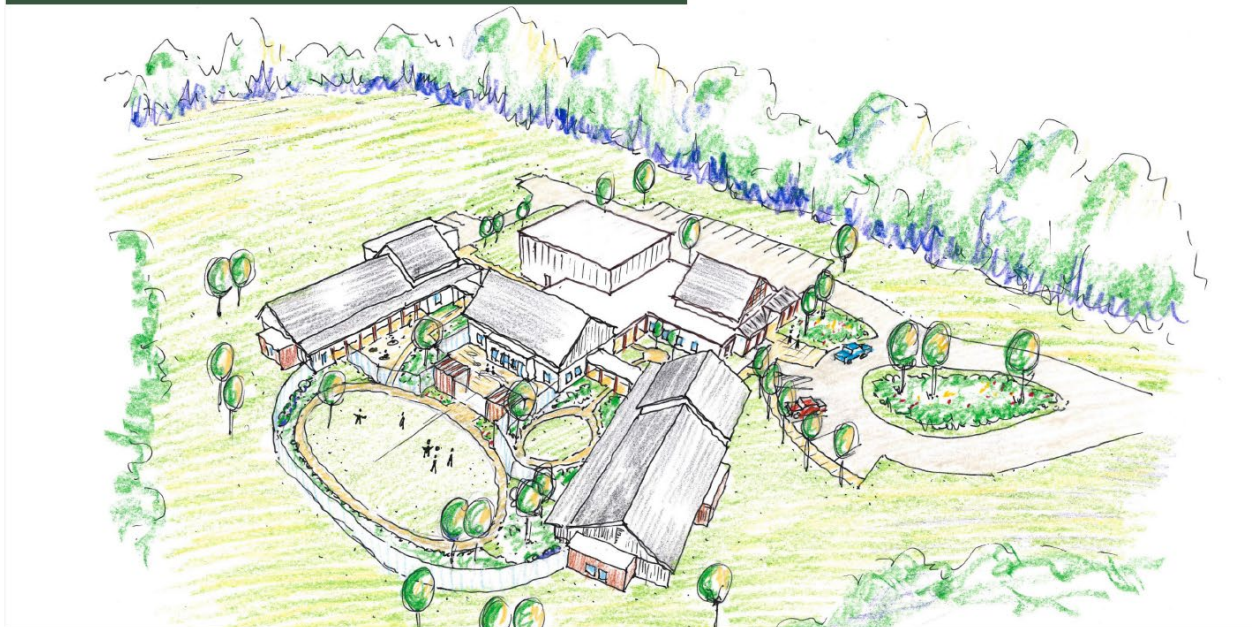
Presentation from the Builders for the upcoming secure facility in Vergennes:

- ReArch Properties
- TreanorHL
- Duncan Wisniewski Architecture

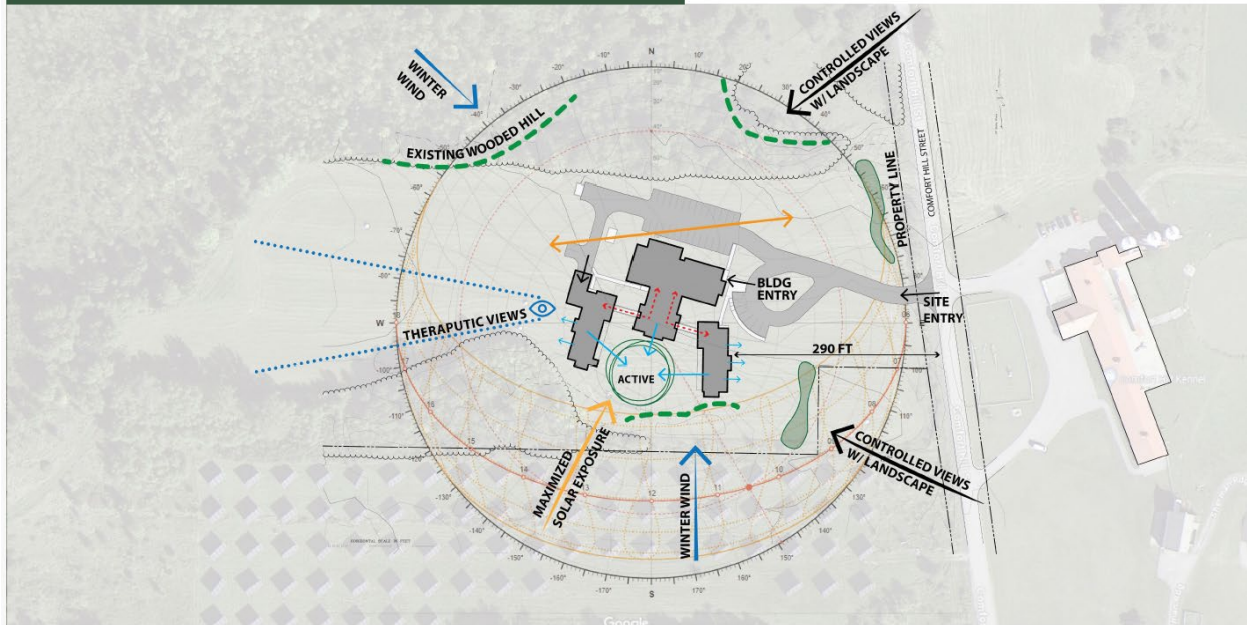
ReArch properties was selected through a competitive process. There was a design team, and pictures of slides were part of the original proposal. There is an iterative design process where work with the state and stakeholders before it is submitted for permitting. Looking to get thoughts and feedback (what do you see as working, what can we approve on, etc.)

We have a landscape architect and are looking towards a therapeutic landscape, populated with different courtyards within fenced in areas. We want to use the buildings themselves instead of fencing, this is important to creating an attractive landscape for those at the location.

Green Mountain Youth Campus



Green Mountain Youth Campus



Bedrooms face outside with the living spaces towards the outside shared space. There is a small kitchen area in each of the small buildings. Serenity rooms for privacy.

Pictures of the location as it currently looks now below – it is the field.

Green Mountain Youth Campus



Green Mountain Youth Campus



Green Mountain Youth Campus



Green Mountain Youth Campus



Green Mountain Youth Campus



Green Mountain Youth Campus



Green Mountain Youth Campus

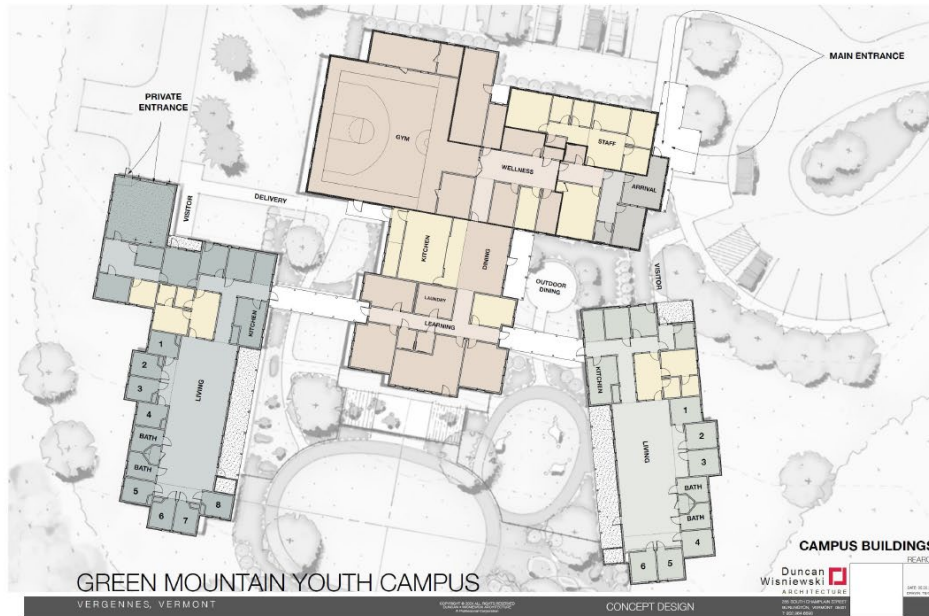


Views of the solar field. As you're looking at this from a birds eye view – campus style, important to have a smaller scale and normative, so multiple buildings. Picked a mixture of flat roofs and gables and distinct buildings that are connected. Scales small, more residential, less institutional.

Green Mountain Youth Campus



Green Mountain Youth Campus



There is a private entrance to blue program, treatment program is in green, red is common area, yellow is private for the staff.

Green Mountain Youth Campus



JUVENILE JUSTICE EXPERIENCE

Influencing behavioral change through transformative design.

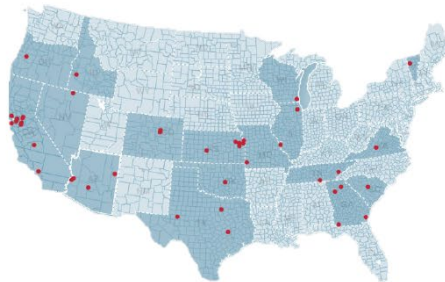
TREANORHL

Green Mountain Youth Campus



INVESTING IN OUR NEXT GENERATION

Transcending juvenile justice



TREANORHL



Green Mountain Youth Campus



Dignity and Respect

Normalization

Safety



Least Restrictive Approach

Focus on Staff

Rehabilitative



Family and Community Centered

Trauma-Informed

Educational Opportunities



Health

Responsive to Special Needs

Flexibility



Green Mountain Youth Campus



TRAUMA INFORMED DESIGN

Guiding Design Principles

- Image and Setting - Welcoming, Safe, Secure
- Spaces for Personalization, Flexibility, Collaboration and Display - Human Scale, Varied Spaces
- Role of Nature – Biophilic Design
- Connections with Community – Meeting Spaces, Programs

TREANORHL

Treanor HL is dedicated to these types of facilities, they have completed 46 other facilities across the country, many themes that drive our discussions.

Brain science emphasizes nature, by leading with landscape it can emphasize restorative justice, healing.

THANK YOU



QUESTIONS



COMMENTS

Questions

Jennifer Poehlmann: Public Transportation? How does that look in Vergennes and for families who might be coming from a distance?

Tyler: It's on a bus route, but not directly into the facility.

Geoffrey: That's something we've talked about in terms of the programming, the way we operate and serve folks, I think the bigger thing you're asking is access. How we can make families and visitors feel welcome and how we can make the approach necessary.

Jennifer: I will leave it at that, but it's in my thoughts!

Lauren: Since this has been in conversation and development for over a year, have you shown these drawings to youth who have lived experience who would potentially be in these bedrooms. I also want to see what the windows look like, what the doors look like.

Tyler: This is the initial unveiling, we haven't shown it to youth, when we get to the windows, doors, we do have some time to discuss that.

Lauren: Great job with indoor gymnasium.

Ali: How far is the bus route from the location, in terms of miles.

A: About a mile, maybe less from main street.

I want to push back about no outdoor physical sports, people love outdoor access. Why is the gym inside, can we have outdoor baseball field, soccer field, etc.?

Sam: There is some space for outside kicking of a soccer field, but there isn't a larger area. Perhaps there would be a question for Tyler about field trip opportunities. Perhaps trails close by.

Geoffrey: I think that eventually gets to a question of fencing, there's a tension between being able to use less fencing in a secure setting versus having bigger outdoor spaces with fencing, how that does or does not point towards the normative goals. It could be a larger conversation but pointing out that it's a balancing act.

Marshall: Thoughts & concerns about the size of the facility and how we decided on the number of beds. One thing we didn't see here and it's been a problem with Woodside & with DOC facilities is a lack of dedicated space for attorney client space and remote hearing spaces. Remote transport doesn't seem to be happening, agencies are stopping transporting people and that forces us to use remote. No facility has dedicated space for that, they all suck – the camera is in wrong position, if someone is in a wheelchair the camera can't be moved. Dedicated rooms for attorneys to meet with their clients. Multiple spaces, they don't need to be big, but a computer, Webex, etc. for court appearances.

A: Each section has a dedicated teleconference room – so there are 3 spaces to teleconference with family, court hearings, etc. I think we could look at those spaces more closely with your feedback.

We have to think about the acoustics, 4 walls and a box, and sometimes that doesn't work for teleconferences.

We'd like to go through the rooms in the next sections.

Sandi: Concerns about fire safety concerns in the kitchen, to the building. There is a bus into Vergennes, shuttle about a mile outside.

Sam: This will be a fully sprinkled building, so in terms of fire risk that knocks that down significantly. We will be working with fire dept.

Melanie: Why are the buildings not symmetrically placed?

A: We broke apart the residential wings with the covered walkways. We did choose to crank one building over, it can't be truly symmetrical because the treatment wing has some differences in the buildings (bedrooms, private entrance), so we've leaned into the differences.

Dana: I'm bad at scale -- can you give us a sense of how big the outdoor area is?

A: about the size of a basketball field.

Haley: Designing a space without knowing what the programming looks like, how does that fit in and how much is changeable down the road?

Trying to get the provider there, but as soon as we can get the operator in the design team, we'll be able to get that in place.

Marshall's question: more detailed schematic section.

Matthew: What is the current cost projection towards the campus?

Tabrena: The proposal contained an estimated cost, but we don't have a definitive cost as we go through the design cost. What's public is between 15 and 20 million.

Matthew: Looking for the contract on the state website, can we get that or post it online if others want it?

This is a leased space, so the construction cost is rolled into the cost of the lease that we pay overtime.

Next Meeting

6.17.24 from 4:00 PM - 5:00 PM

Enabling Statutory Language

Sec. E.316 STAKEHOLDER WORKING GROUP; FACILITY PLANNING FOR JUSTICE-INVOLVED YOUTH

(a) The Department for Children and Families, in consultation with the Department of Buildings and General Services, shall assemble a stakeholder working group to provide regular input on the planning, design, development, and implementation of the temporary stabilization facility for youth and on the development of a long-term plan for the high-end system of care.

(b) The stakeholder working group, constituted as a subcommittee of, or 13 drawn from, existing groups or created as a separate group, may include 14 representatives from:

- (1) the families of children in the Department's custody for delinquency offenses;
- (2) youth who have been in custody for juvenile offenses;
- (3) the Juvenile Defender's Office;
- (4) the Office of State's Attorneys;
- (5) the Family Court;
- (6) the Office of Racial Equity;
- (7) the Vermont Family Network;
- (8) the Vermont Federation of Families;
- (9) the Children and Family Council for Prevention Programs;
- (10) the Vermont Protection and Advocacy;
- (11) the Department of Mental Health;

- (12) the Department of Disabilities, Aging, and Independent Living;
- (13) the State Program Standing Committees for Developmental Services, Children's Mental Health, and Adult Mental Health; and
- (14) any other groups the Department may select.

(c) The Department shall regularly present relevant information to the stakeholder working group established pursuant to this section and review recommendations from the working group regarding:

- (1) facility design layout, programming, and policy development for the temporary stabilization facility, including data on the number of cases and types of case mix, as well as likely length of stay; and
- (2) the Department's data and assumptions for size, type of treatment, and security levels for future permanent facilities included in the planning process proposed in the fiscal year 2024 capital bill; optimal locations, including whether a campus plan is appropriate; and any plans regarding the use of outside contractors for facility operations, including State oversight of appropriate quality of care.

(d) The stakeholder working group established in this section shall be subject to the requirements of the Vermont Open Meeting Law.

(e) On or before January 15, 2024, the Commissioner of Children and Families shall develop and submit a strategic plan to the House Committees on Corrections and Institutions and on Human Services and to the Senate Committees on Health and Welfare and Institutions, as part of the overall planning process for development of the high-end system of care, for preventing the disproportionality of youth who are Black, Indigenous, or Persons of Color in staff- or building-secure facilities. The strategic plan shall include mechanisms for collecting necessary data, and the process of development shall include input from relevant public stakeholders.

(f) The stakeholder working group shall cease to exist on June 30, 2025.