

GPS CONTROL POINTS

HVCTRL #1

CLEVELAND
 NORTH = 77610.30
 EAST = 1931.49
 ELEV. = 579.72

DESCRIBED BY VERMONT AGENCY OF TRANSPORTATION 1996 (DJM) GENERAL LOCATION BETHEL, 1.4 MILES (2.3 KM) SW OF BETHEL VILLAGE. TO REACH FROM THE JUNCTION OF VT 107 AND VT 12 SOUTH OF BETHEL, PROCEED EASTERLY ALONG VT 107 AND VT 12 FOR APPROX 0.3 M (1.0 FT) TO THE MARK ON THE LEFT. THE MARK IS DIRECTLY OPPOSITE CLEVELAND BROOK ROAD, 25.5 FT (7.8 M) NORTH FROM THE CENTERLINE OF VT 107 AND VT 12. OWNERSHIP STATE OF VERMONT STATION MARK IS A STATE OF VERMONT SURVEY MARK SET IN THE TOP OF A 12 INCH DIAMETER CONCRETE POST SET FLUSH WITH GROUND. IT IS 25.5 FT (7.8 M) NORTH OF CENTERLINE VT 107 AND VT 12, 4.5 FT (1.4 M) NORTH OF 3 CABLE GUARD RAIL, 45 FT (13.7 M) SOUTHEAST FROM COMBINATION POLE 4/49/57, 15 FT (4.6 M) SOUTH OF THE NORTH END OF A 4 FT (1.2 M) X 5 FT (1.5 M) CONCRETE BOX, 72 FT (21.9 M) NORTH OF THE SOUTH END OF A 4 FT (1.2 M) X 5 FT (1.5 M) CONCRETE BOX.

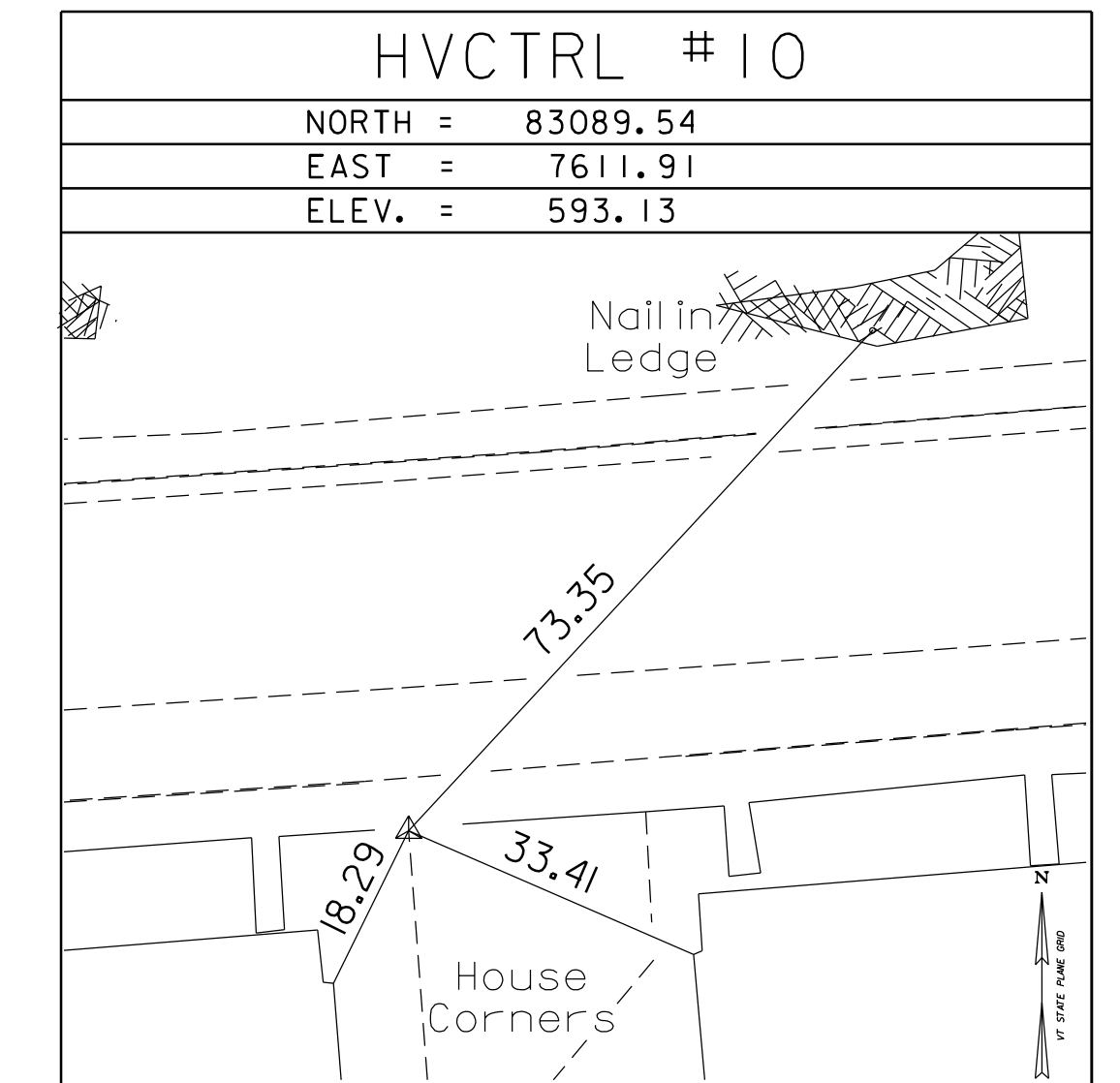
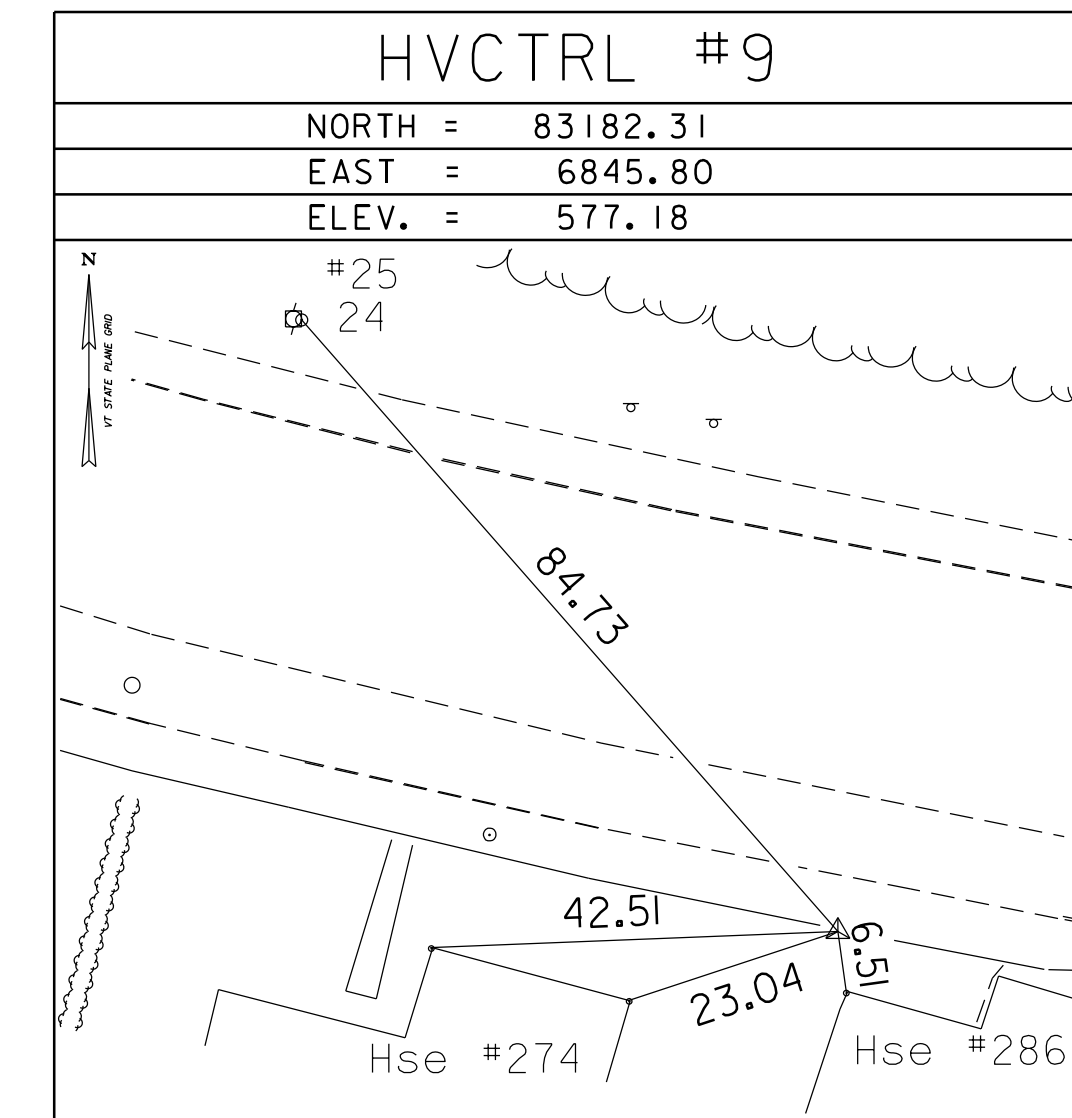
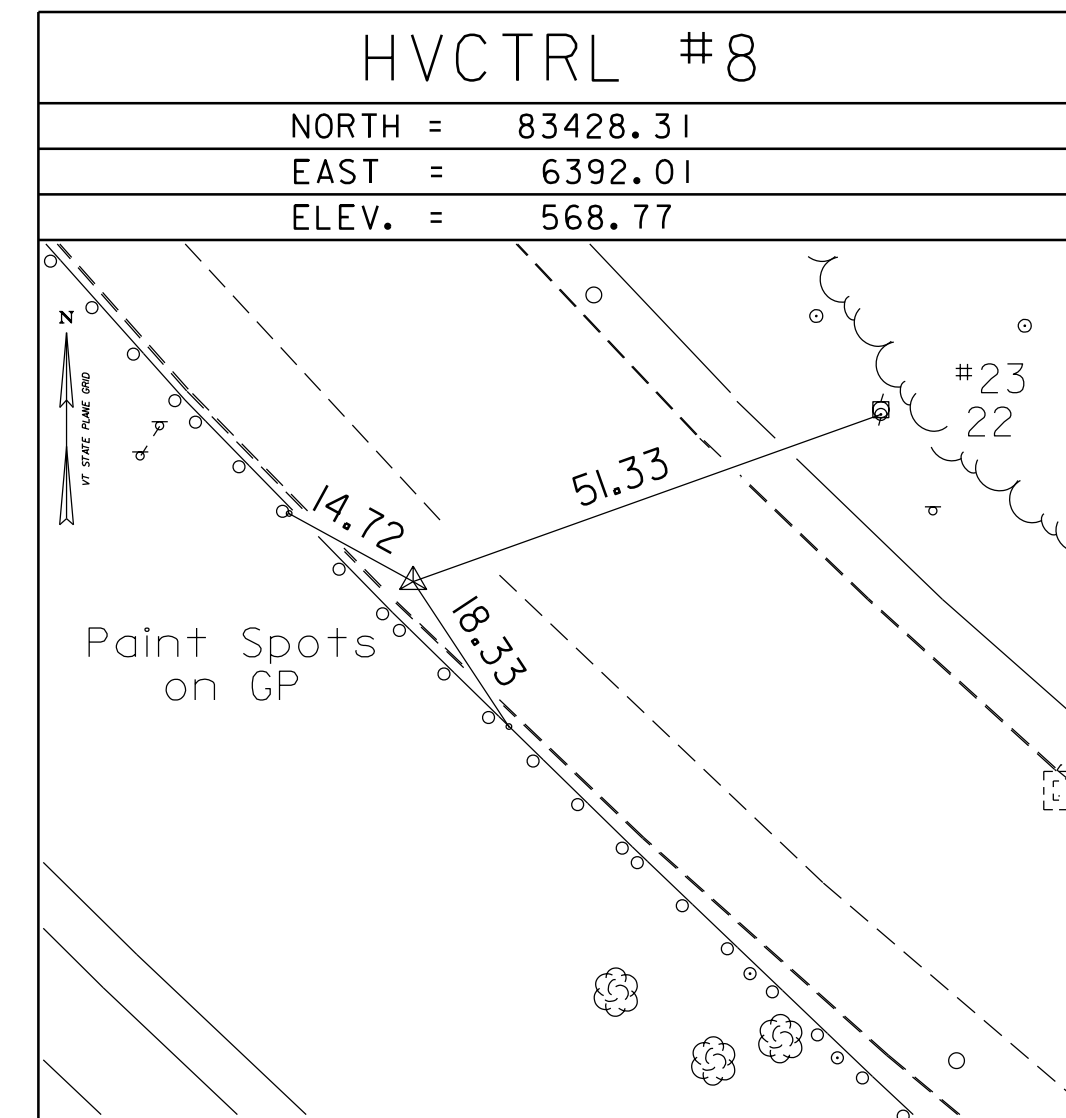
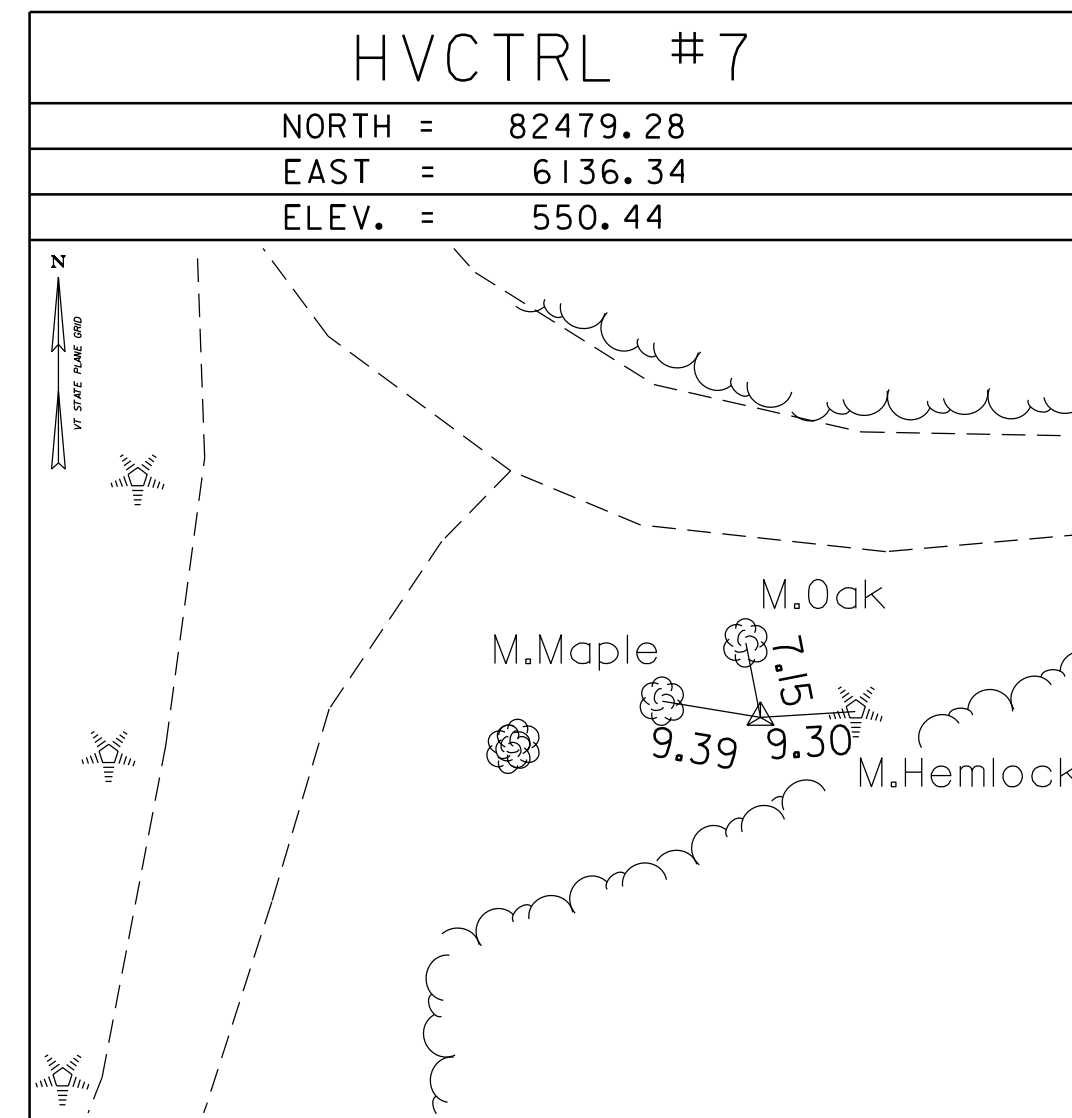
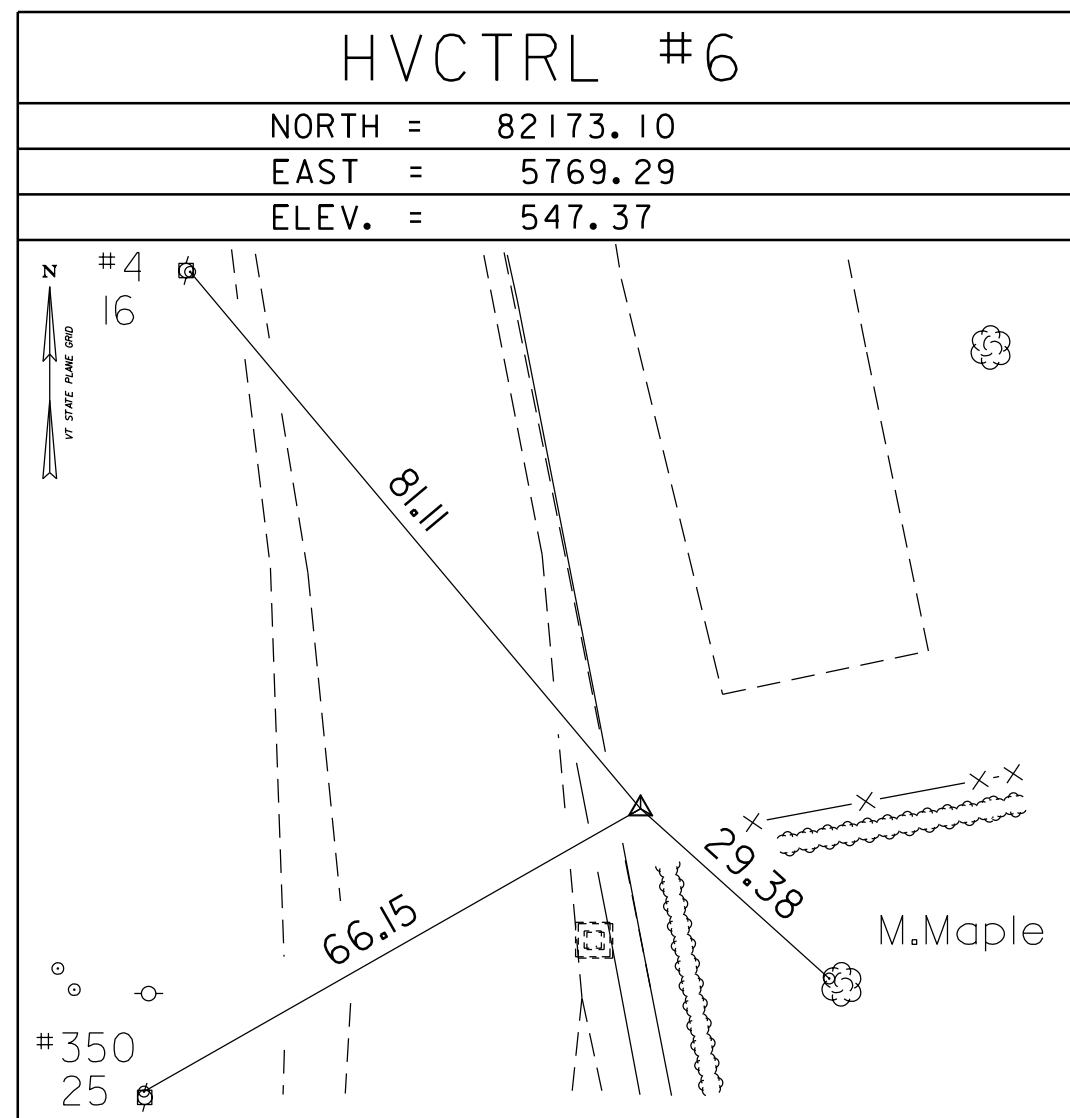
HVCTRL #2

CLEVELAND AZ
 NORTH = 78386.83
 EAST = 3594.38
 ELEV. = 553.18

DESCRIBED BY VERMONT AGENCY OF TRANSPORTATION 1996 (DJM) GENERAL LOCATION, BETHEL, VT. 1.1 MILES (1.8 KM) SOUTHWEST OF BETHEL VILLAGE. OWNERSHIP STATE OF VERMONT. TO REACH FROM THE JUNCTION OF VT ROUTE 107 AND VT ROUTE 12, SOUTH OF BETHEL, PROCEED EASTERLY ALONG VT 107 AND VT 12 FOR APPROX 0.6 M (2.0 FT) TO THE MARK ON THE LEFT. STATION MARK IS A STATE OF VERMONT SURVEY MARK SET IN THE TOP OF A 12 INCH DIAMETER CONCRETE POST SET FLUSH WITH GROUND. IT IS 26 FT (7.9 M) NORTHWEST OF THE CENTERLINE OF THE ROAD, 88.5 FT (27.0 M) SOUTHWEST OF COMBINATION POLE 49/4/41, 143 FT (43.6 M) WEST OF 18 INCH CGMP WITH 7FT MARBLE HEADWALL.

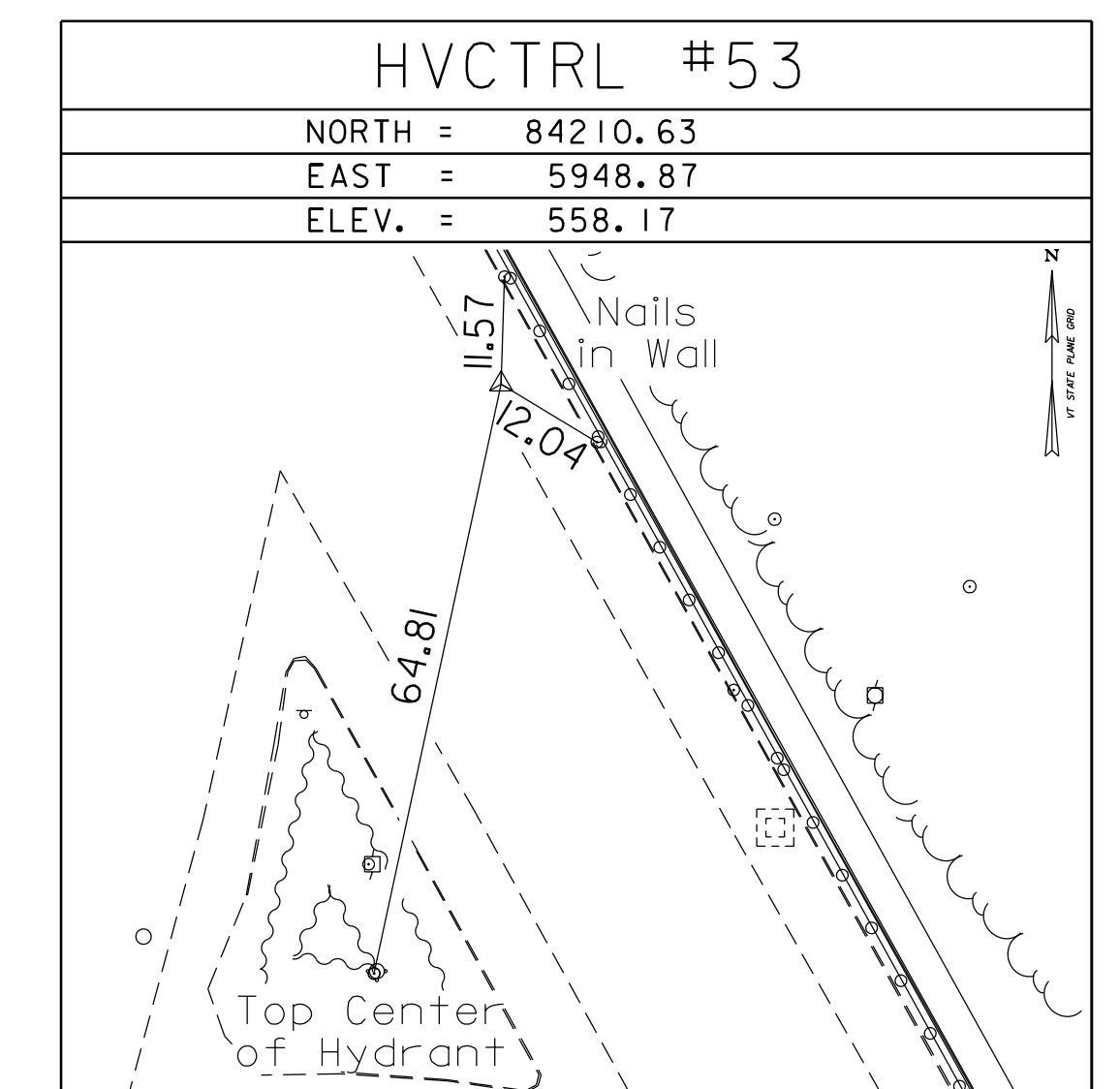
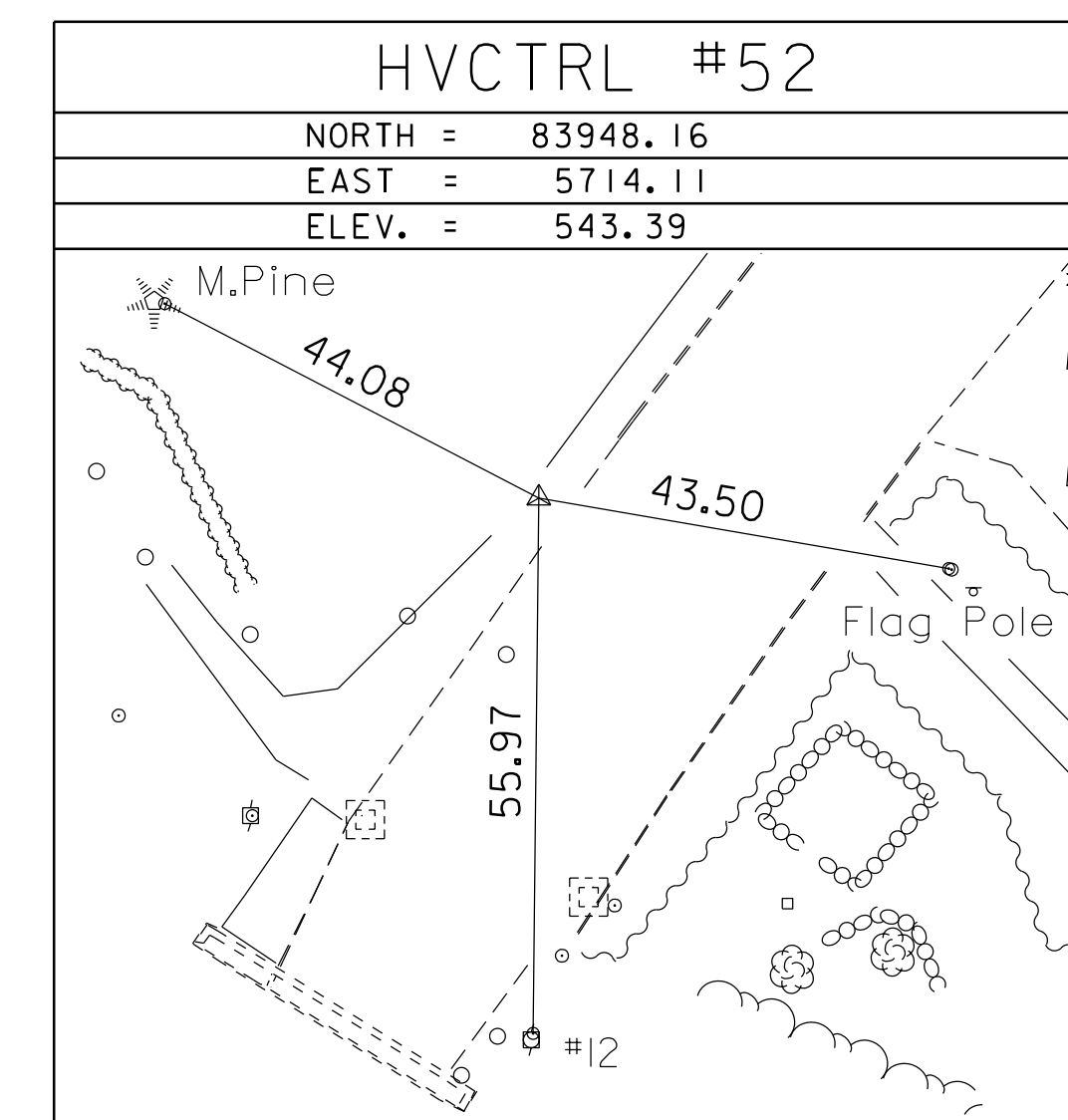
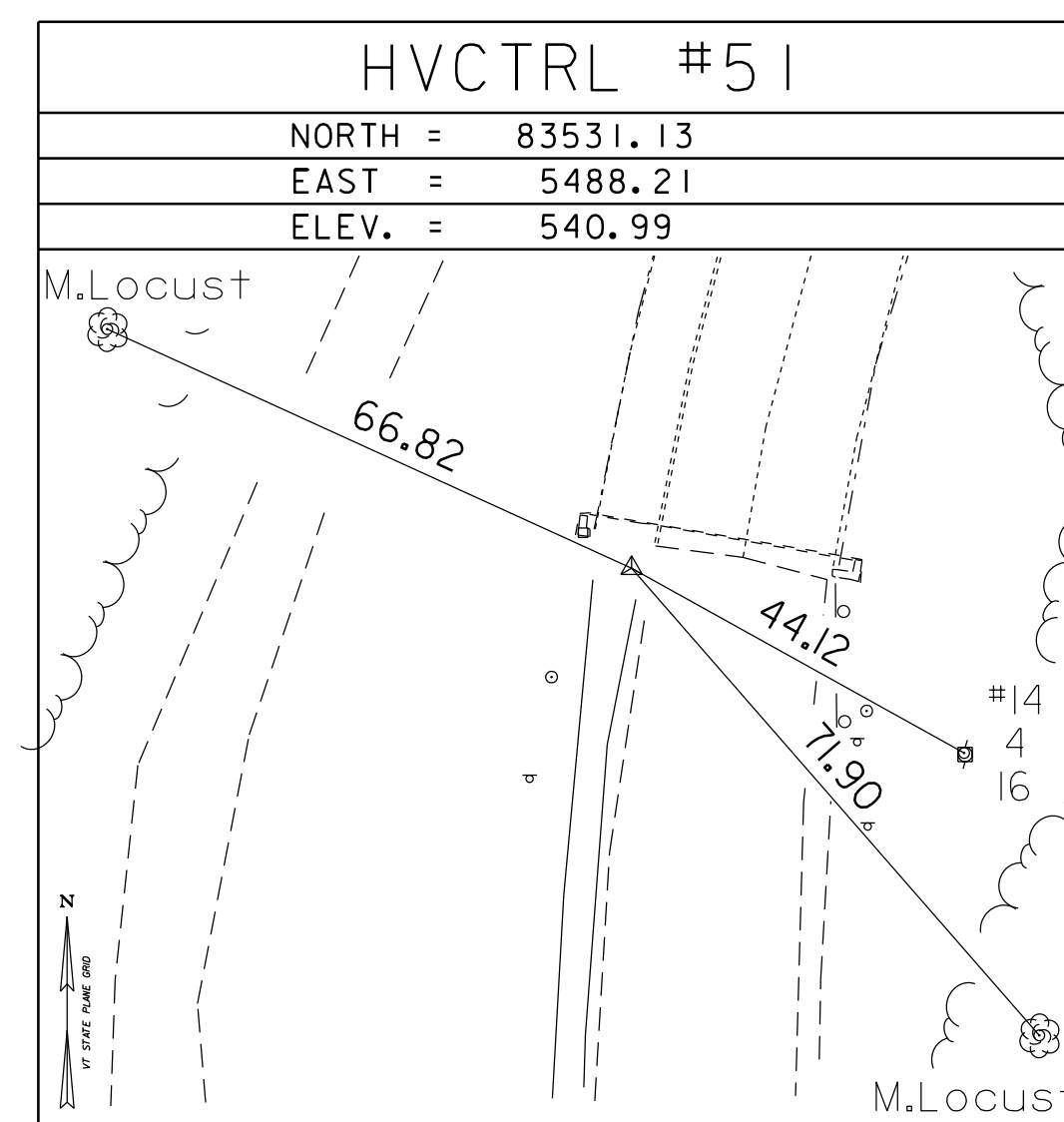
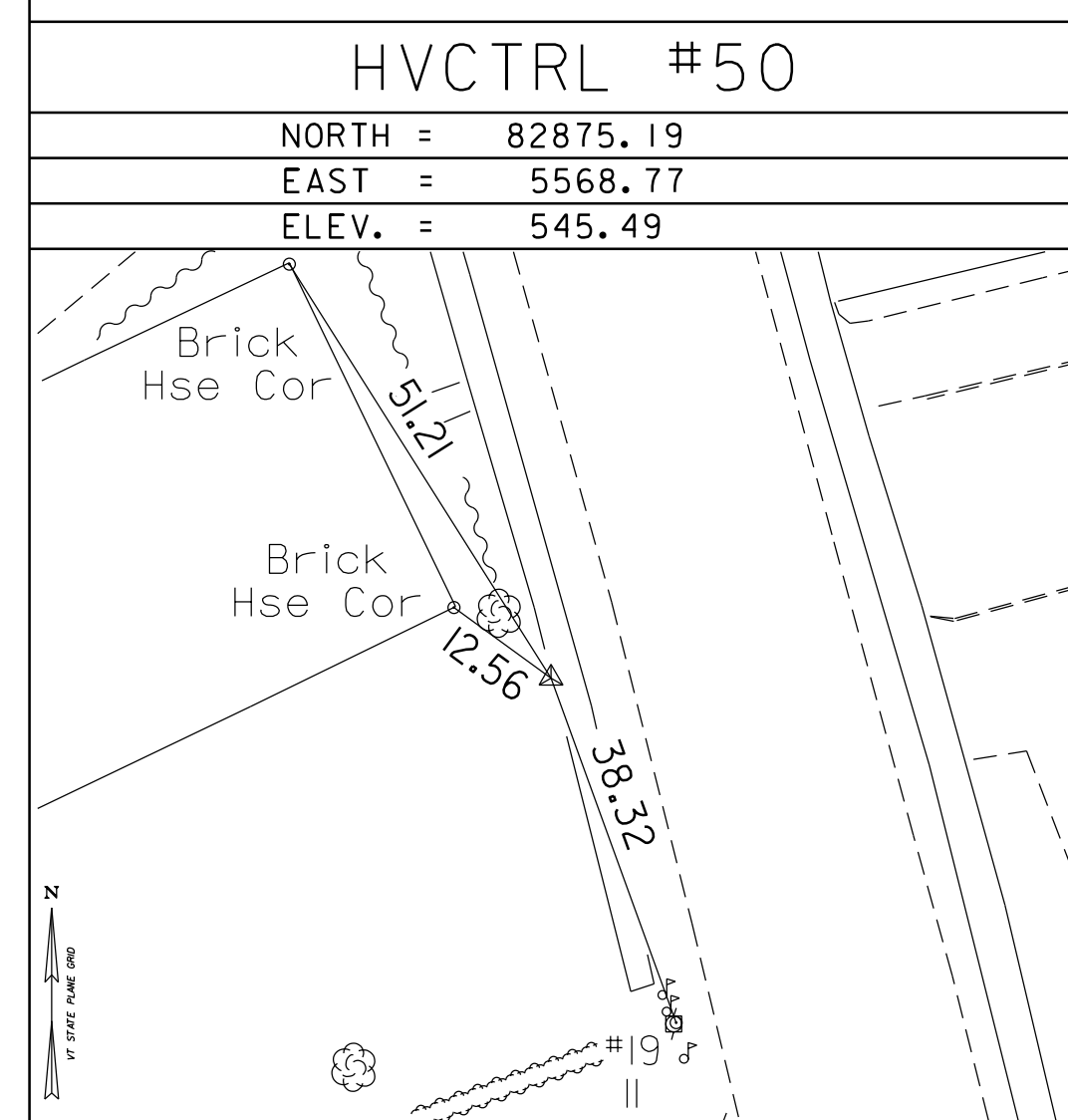
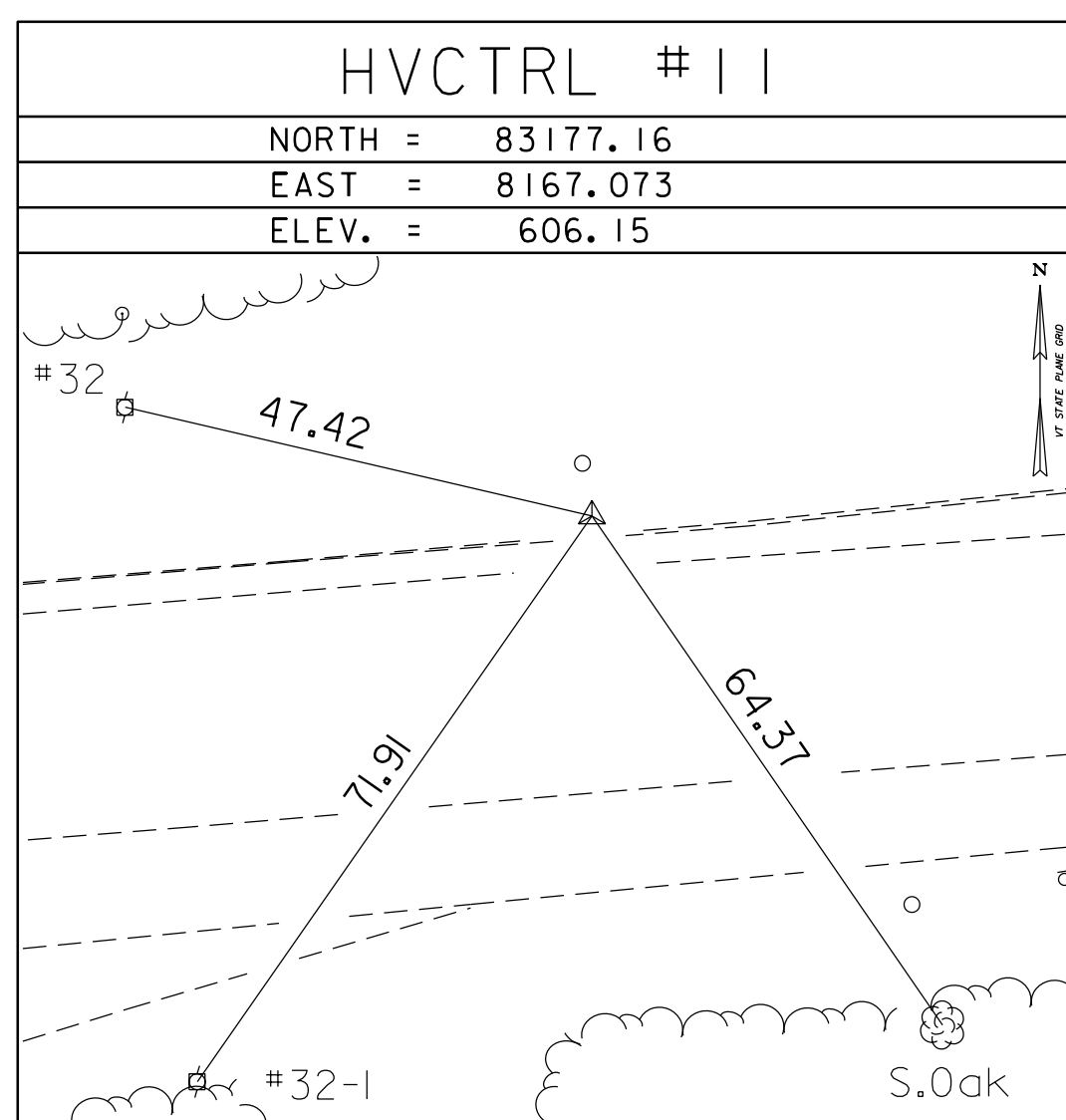
* TO ALLOW THE STATE PLANE COORDINATES TO FIT THE AGENCY DESIGN PLANE, SUBTRACT 400,000 FROM THE NORTHINGS AND SUBTRACT 1,600,000 FROM THE EASTINGS

TRAVERSE TIES



* Main Traverse Completed 12/94 by R.Gilman P.C. & T.Companiion

Traverse Ties

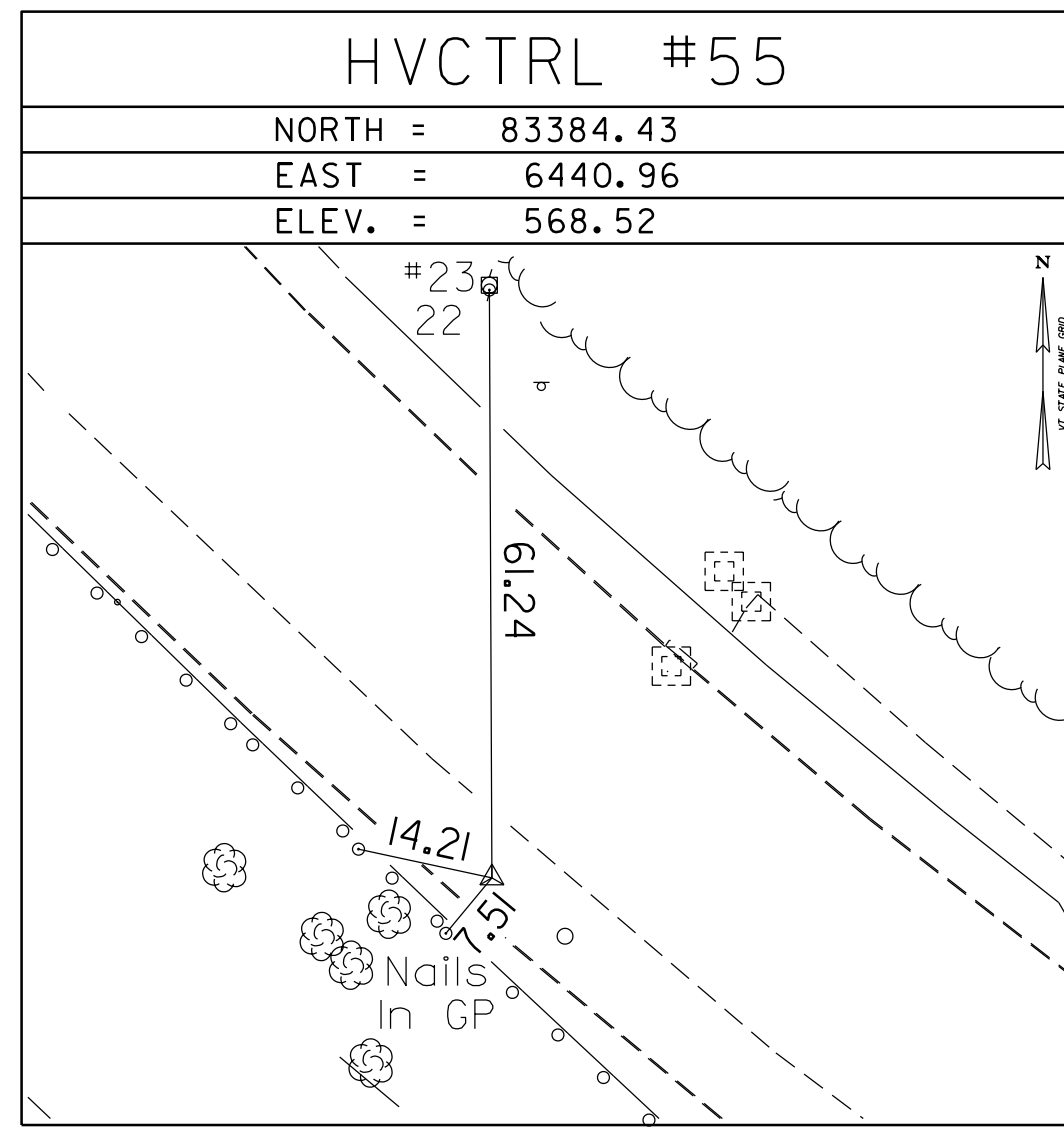
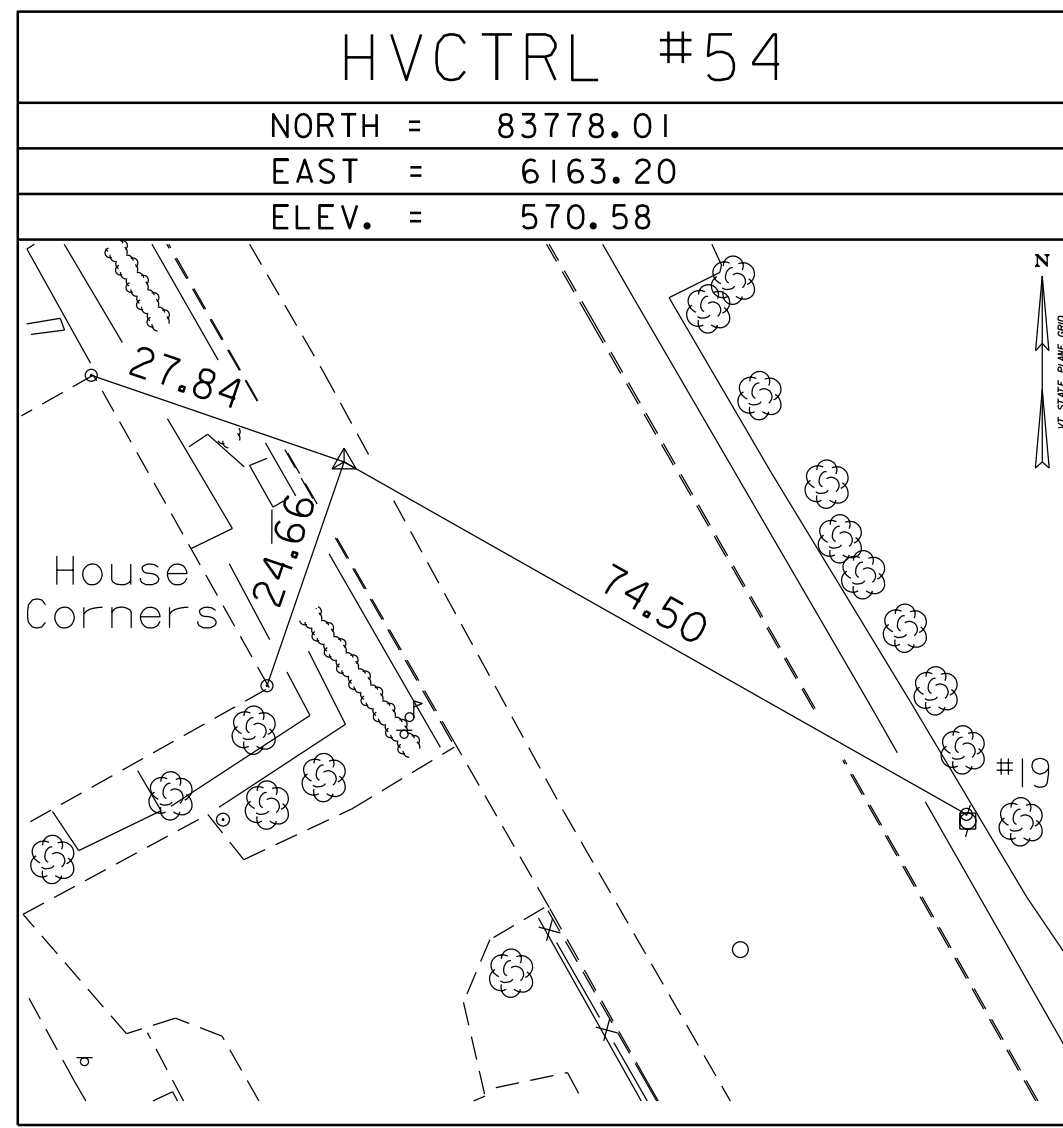


* Secondary Traverse Completed 3/22/07 by R.Gilman P.C. & P.Winters & R.Bullock

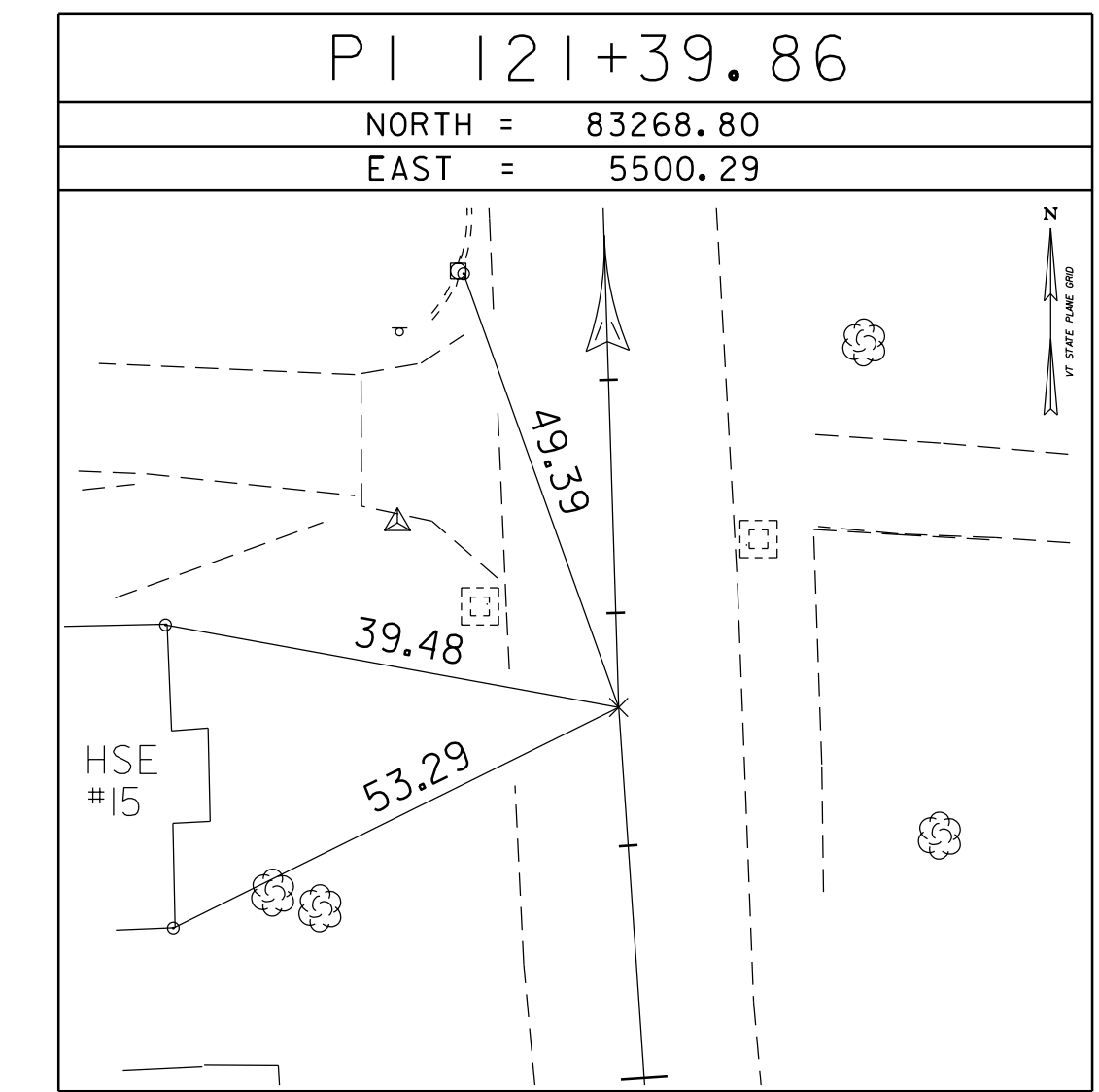
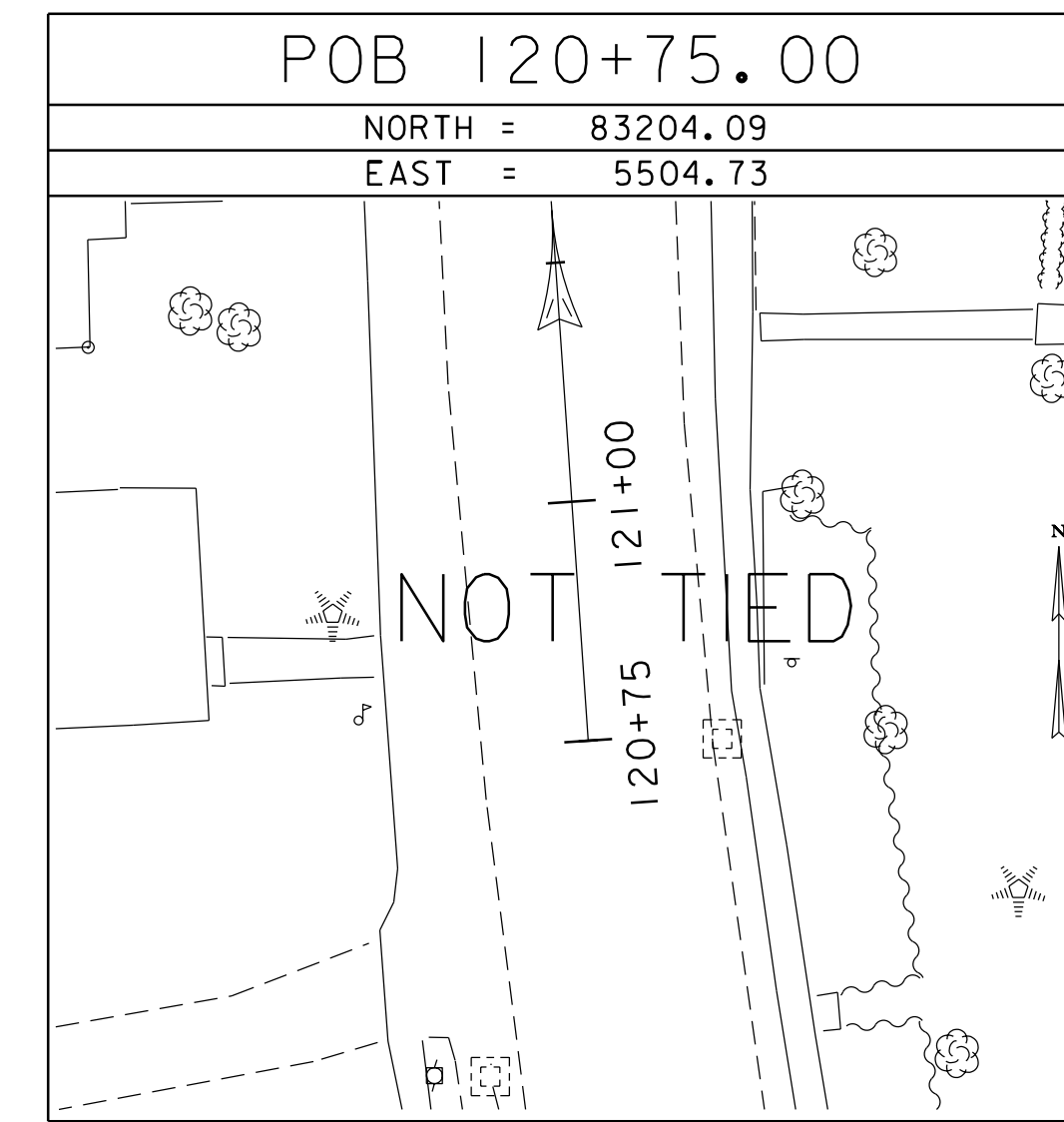
DATUM	
VERTICAL	NAVD 88
HORIZONTAL	NAD 83 (92)
ADJUSTMENT	Compass

PROJECT NAME: BETHEL	
PROJECT NUMBER: BRF 022-1(I14)	
FILE NAME: 78f16\survey\78f16ti.dg	PLOT DATE: 20-MAY-2011
PROJECT LEADER: Martha Evans-Mongeon	DRAWN BY: R. Bullock
DESIGNED BY:	CHECKED BY:
TIE SHEET 1 OF 2	SHEET 14 OF 148

Traverse Ties

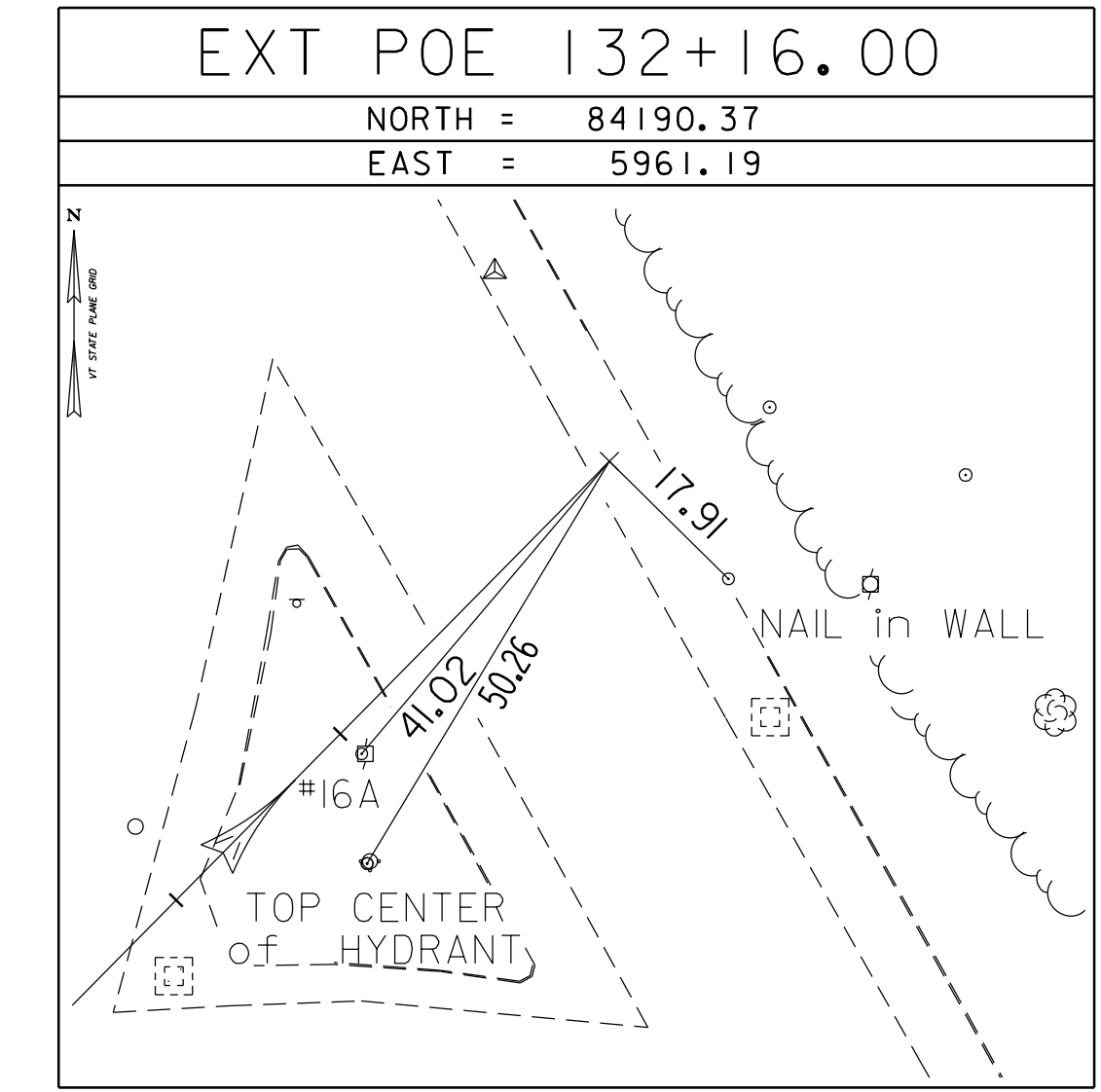
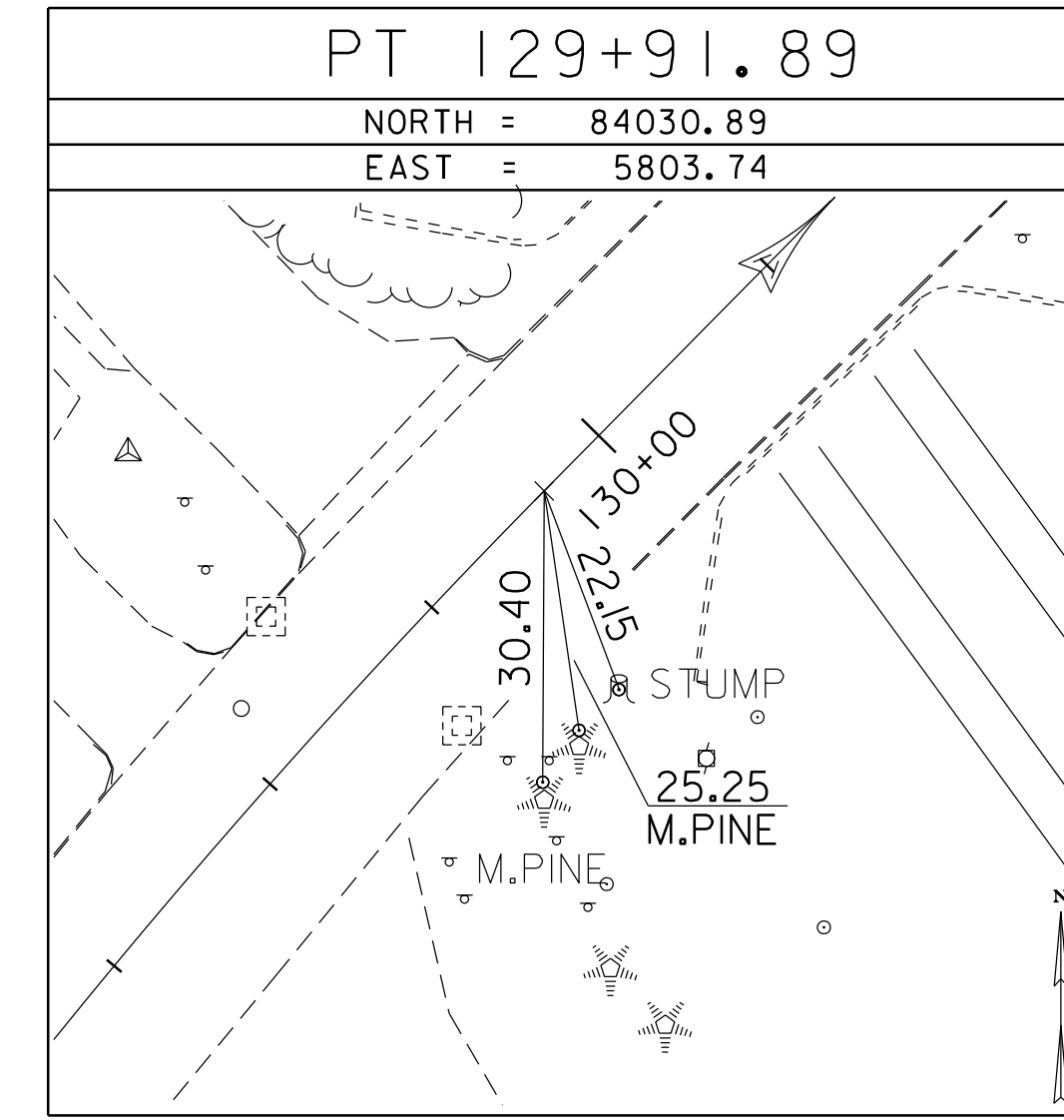
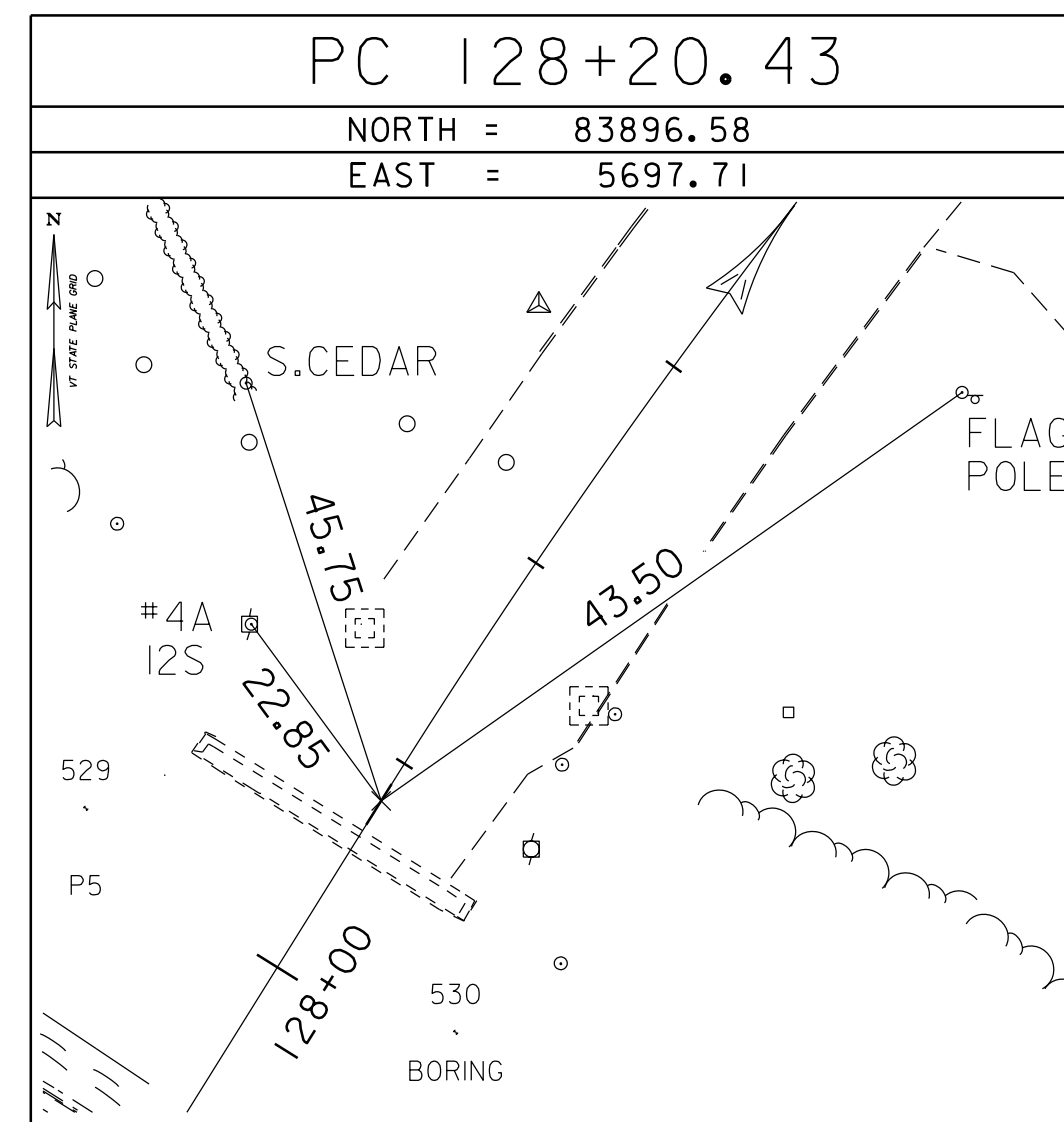
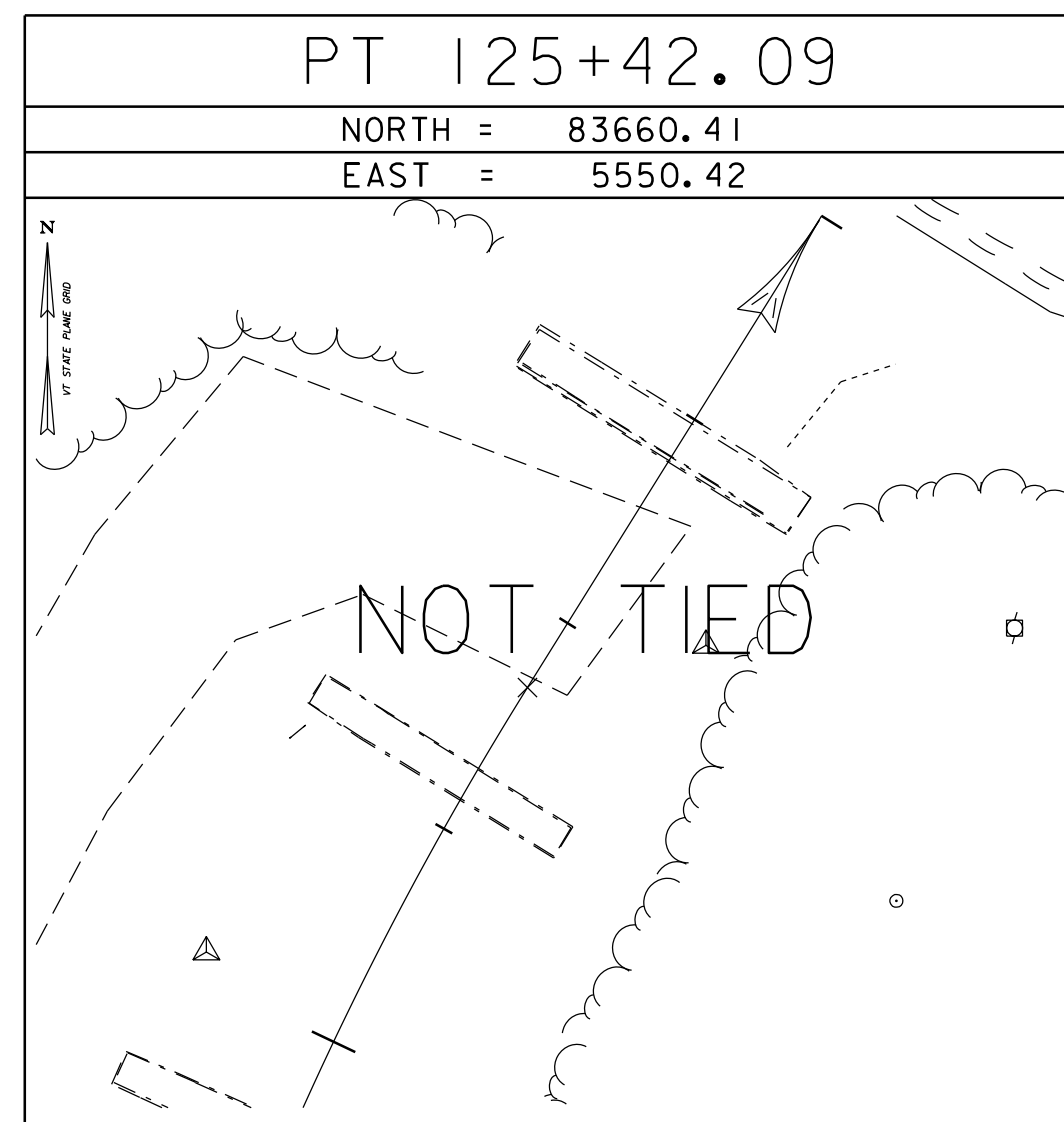
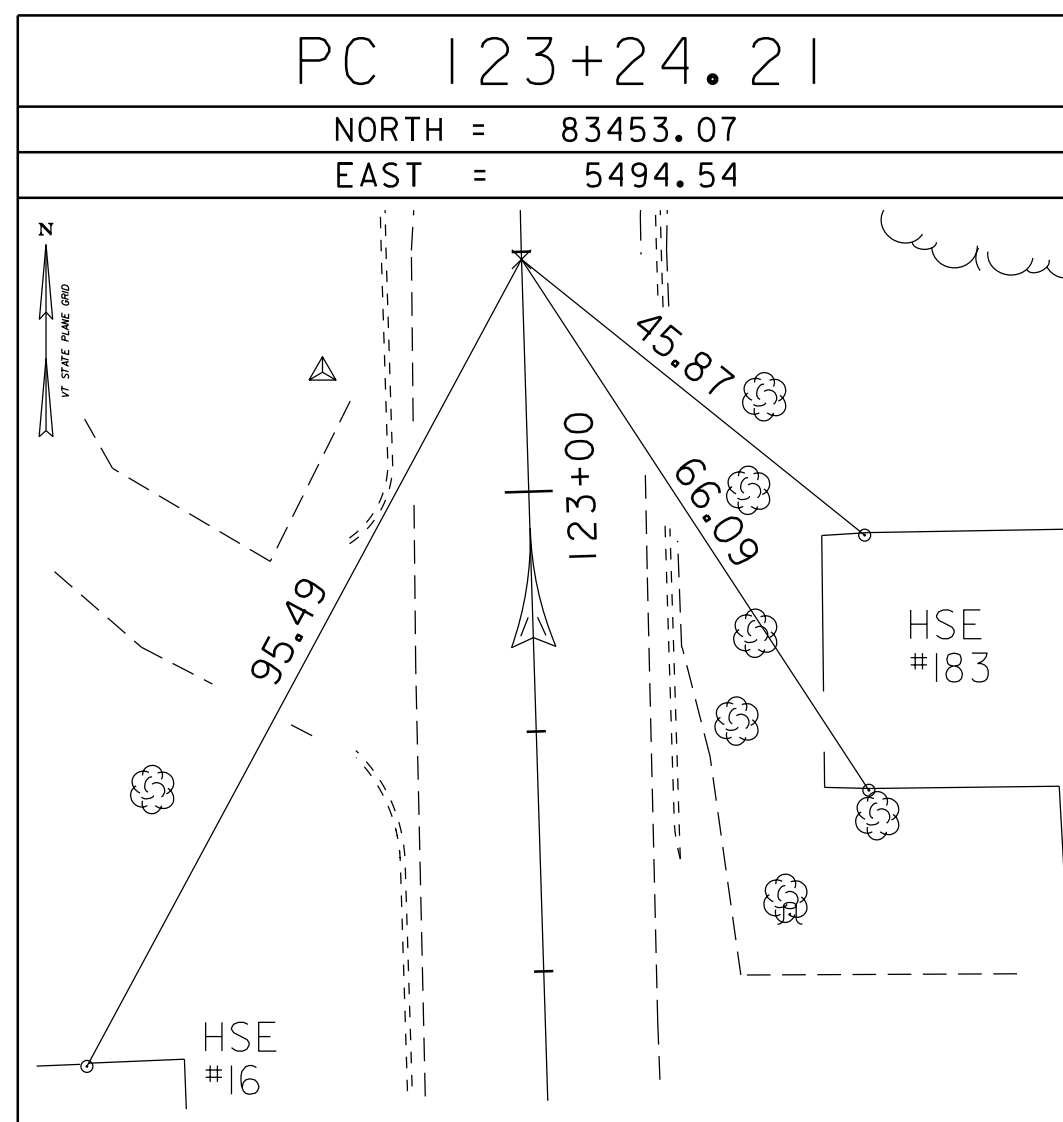


ALIGNMENT TIES

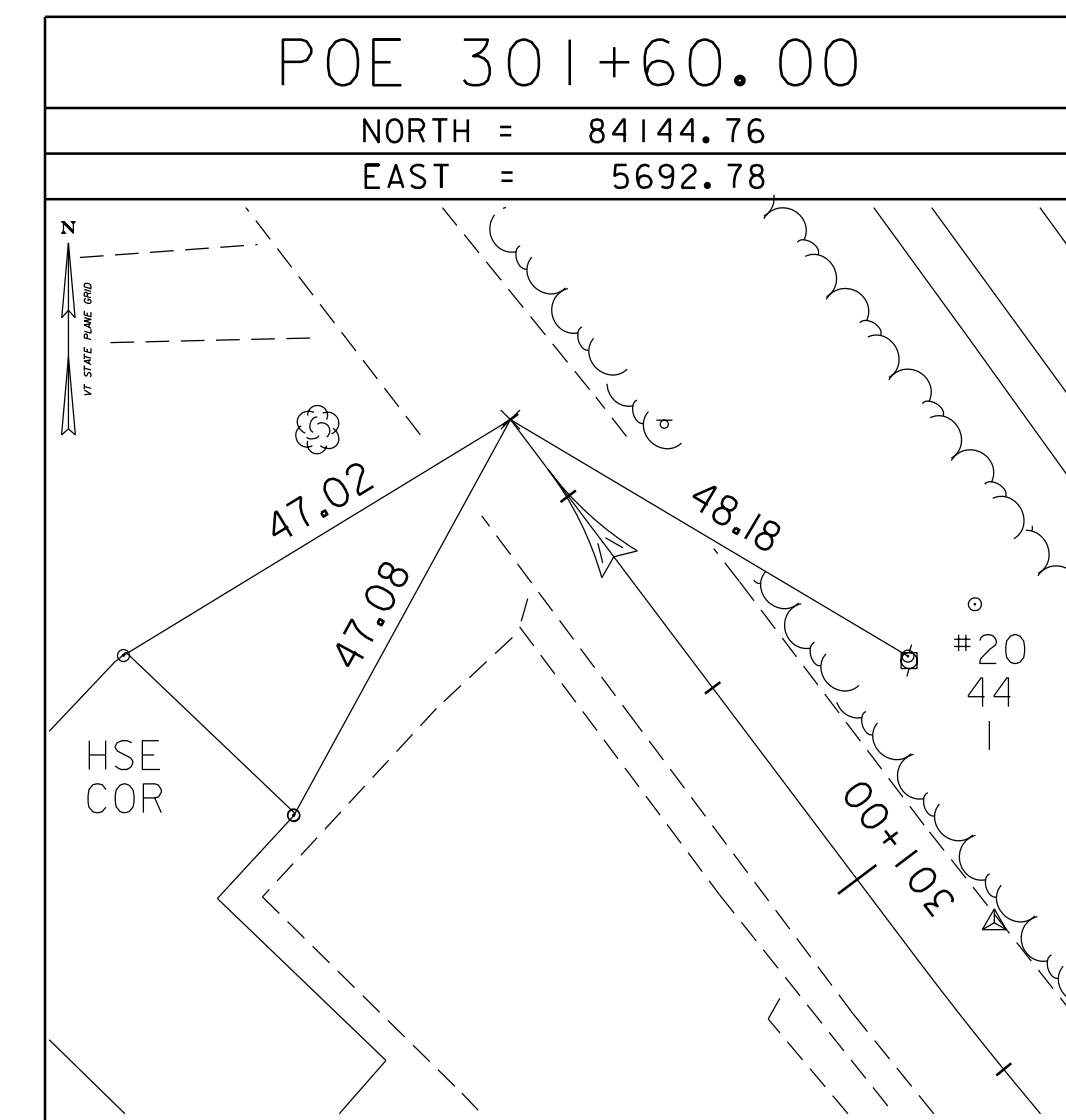
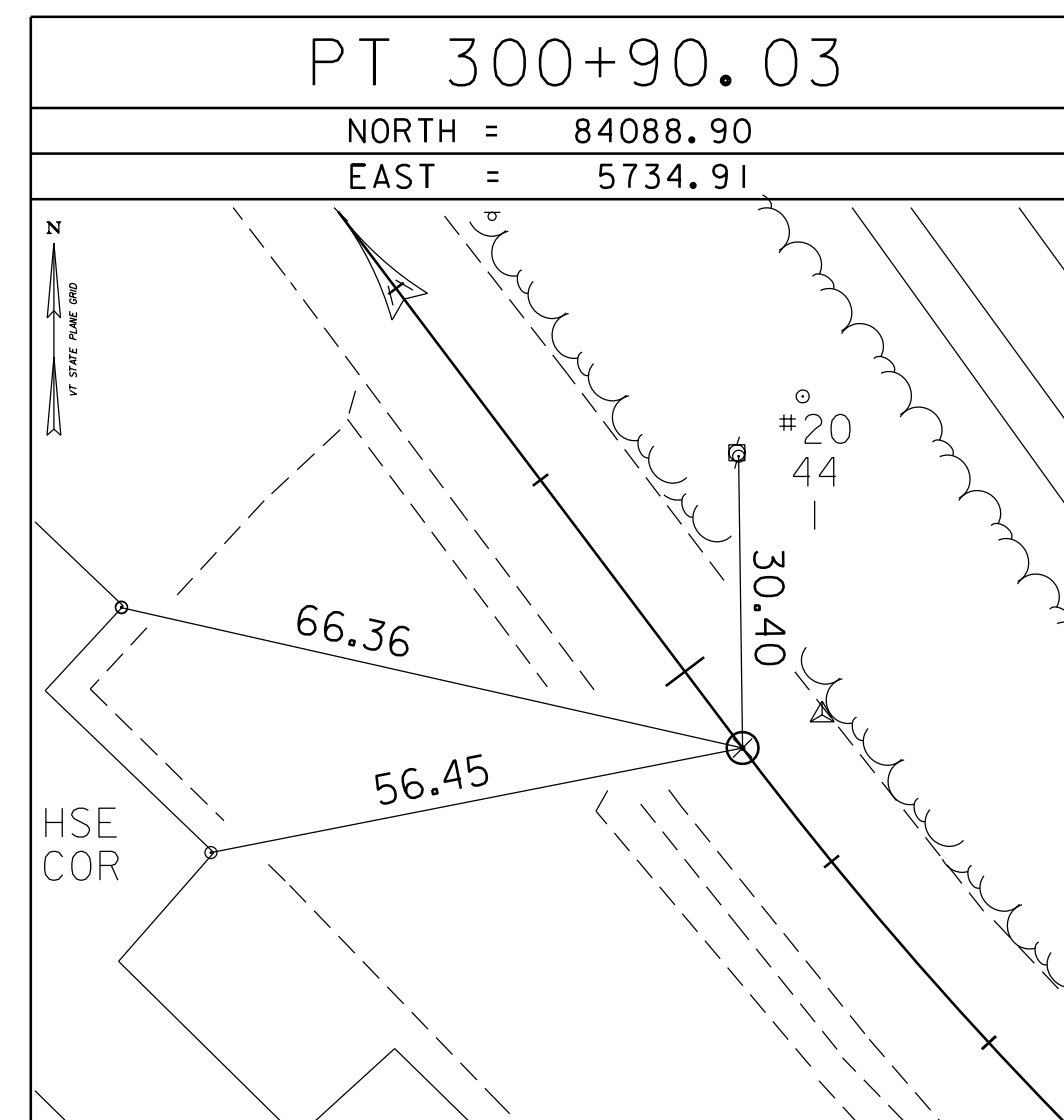
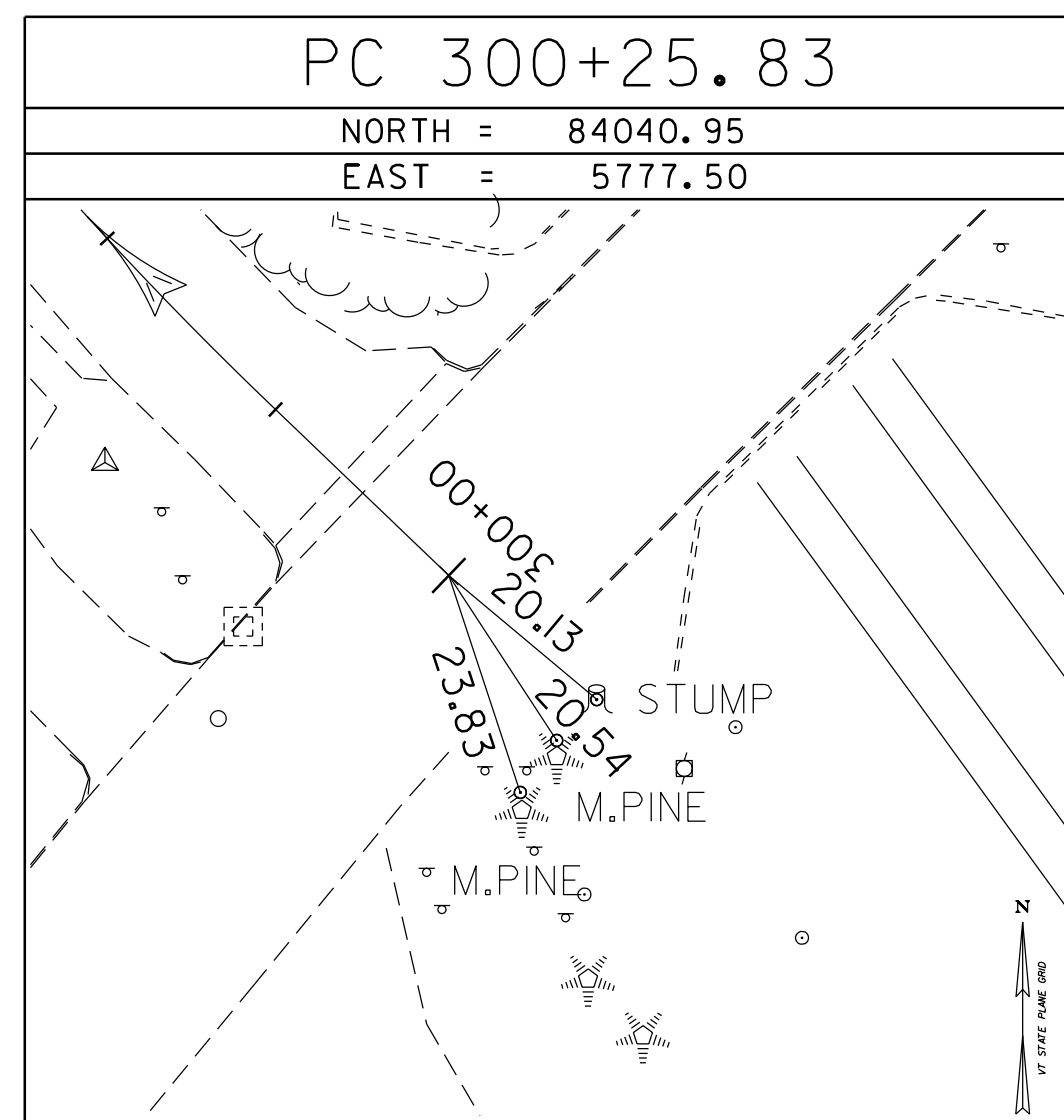
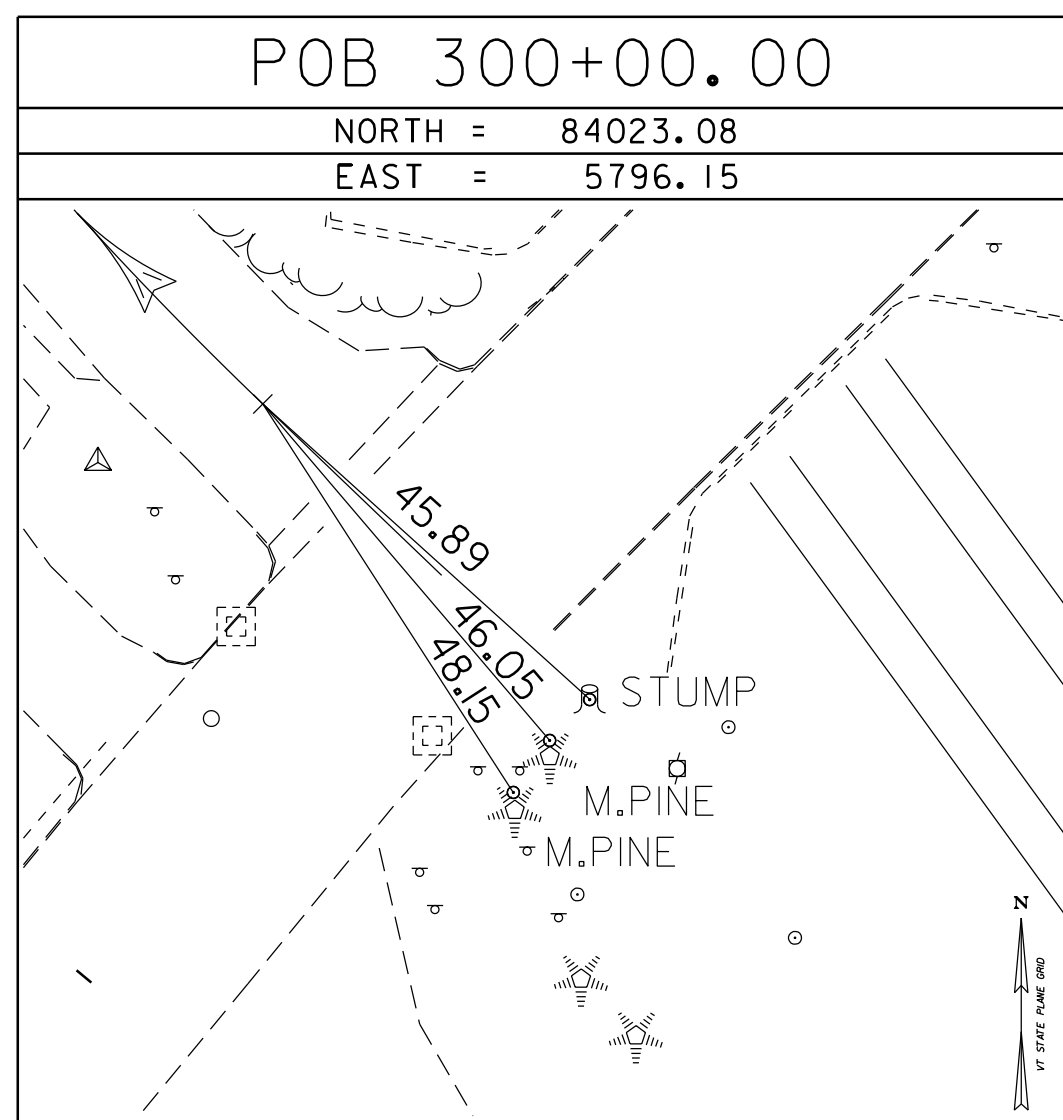


• Alignment Staked 3/22/07 by R.Gilman P.C. & P.Winters & R.Bullock

Alignment Ties



ALIGNMENT TIES



DATUM	
VERTICAL	NAVD 88
HORIZONTAL	NAD 83 (92)
ADJUSTMENT	Compass

PROJECT NAME: BETHEL	
PROJECT NUMBER: BRF 022-1(I14)	
FILE NAME: 78f16\survey\78f16\i14.dg	PLOT DATE: 20-MAY-2011
PROJECT LEADER: Martha Evans-Mongeon	DRAWN BY: R. Bullock
DESIGNED BY:	CHECKED BY:
TIE SHEET 2 OF 2	SHEET 15 OF 148