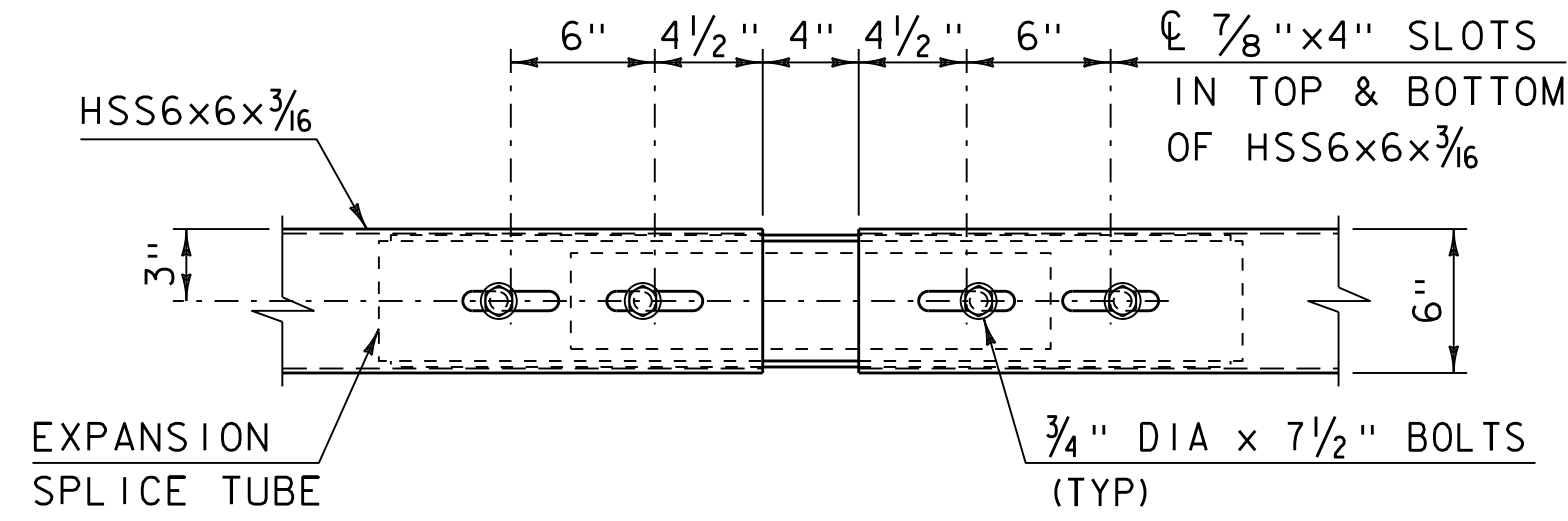
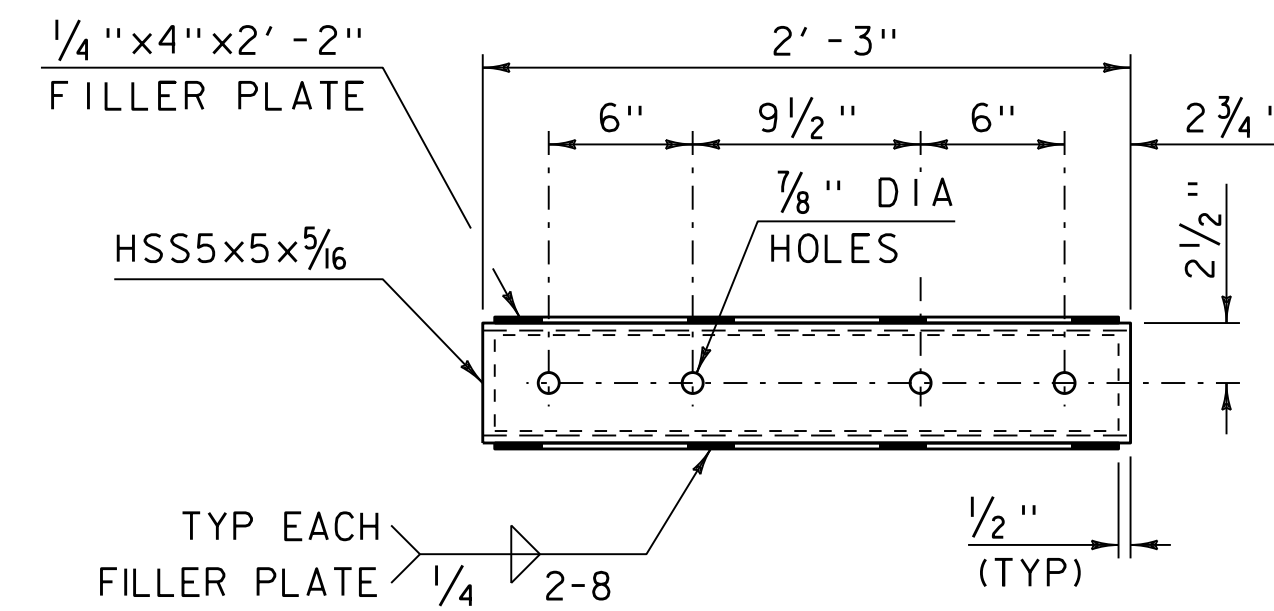


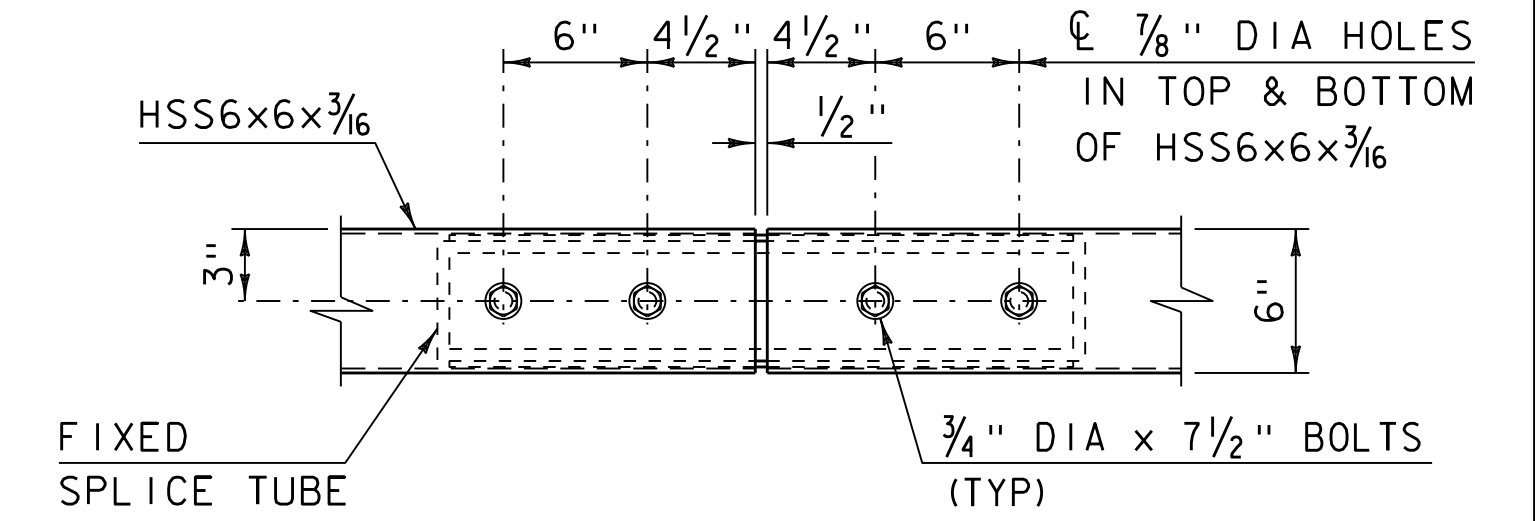
TOP VIEW



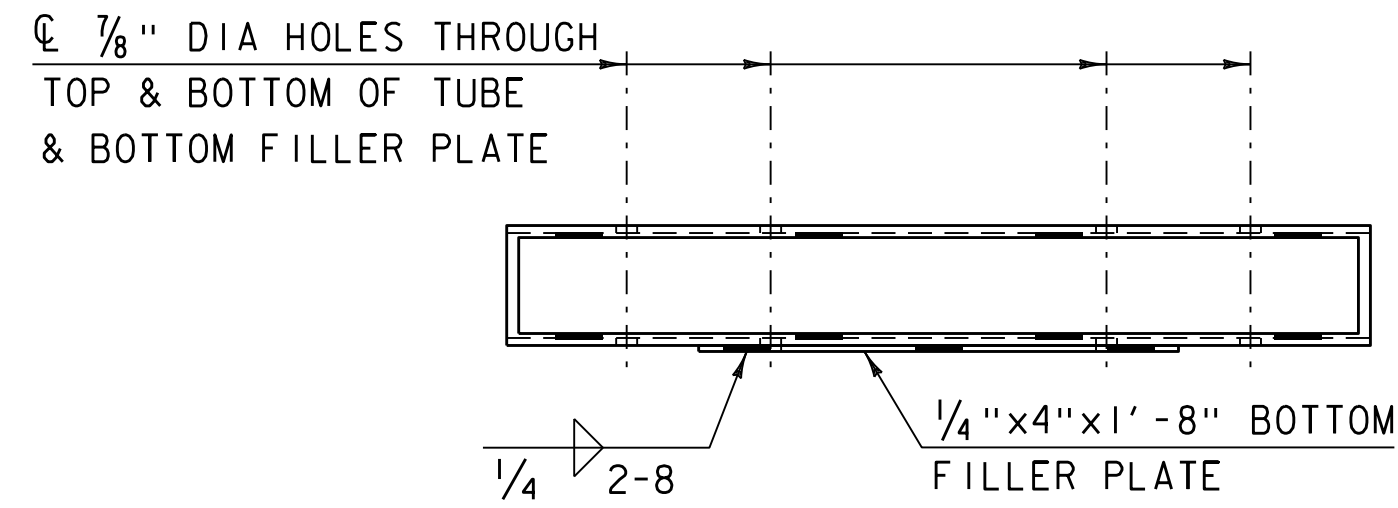
TOP VIEW



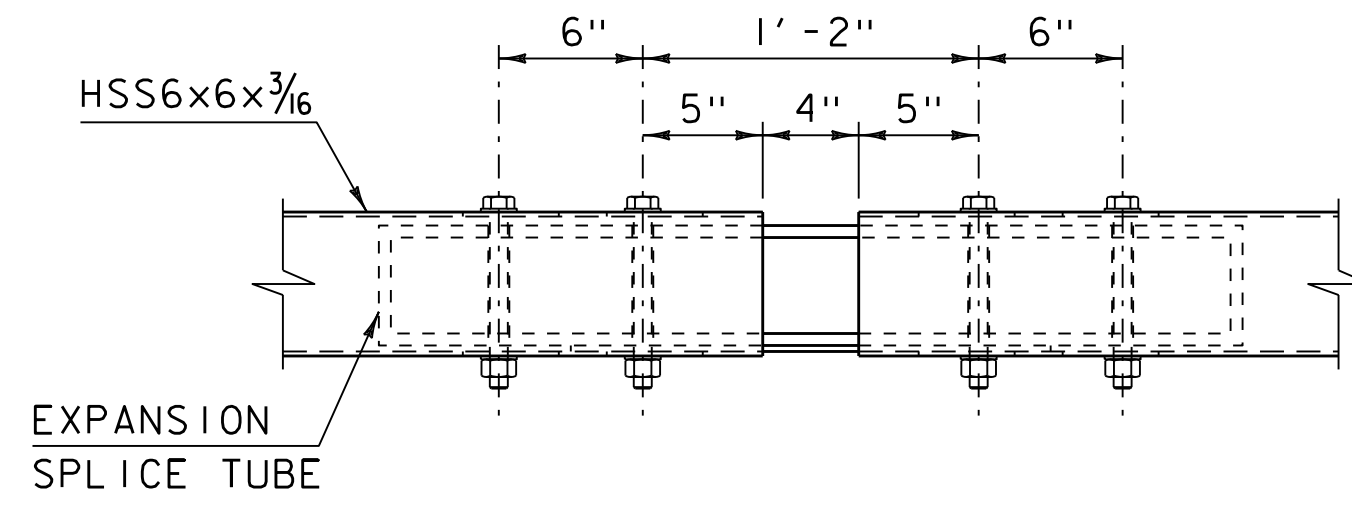
TOP VIEW



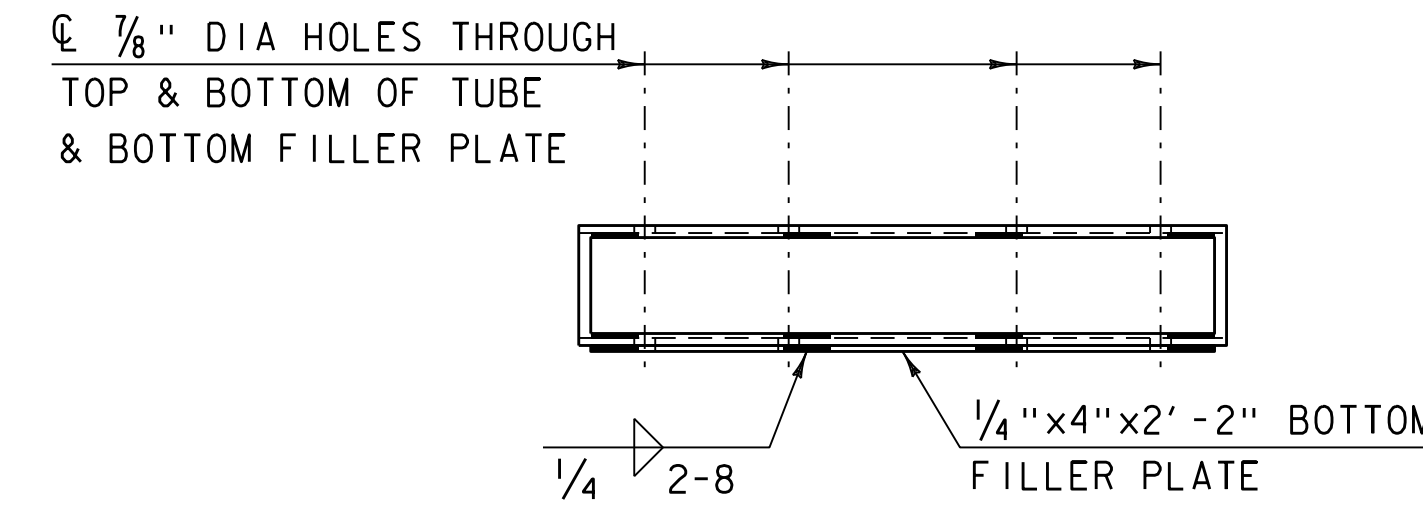
TOP VIEW



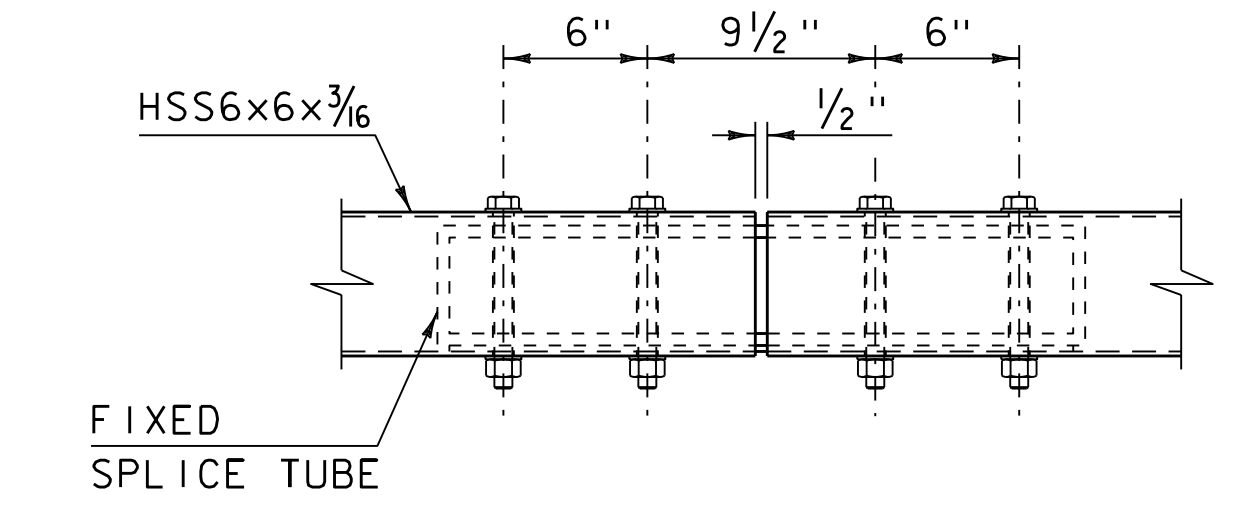
SIDE VIEW
EXPANSION SPLICE TUBE



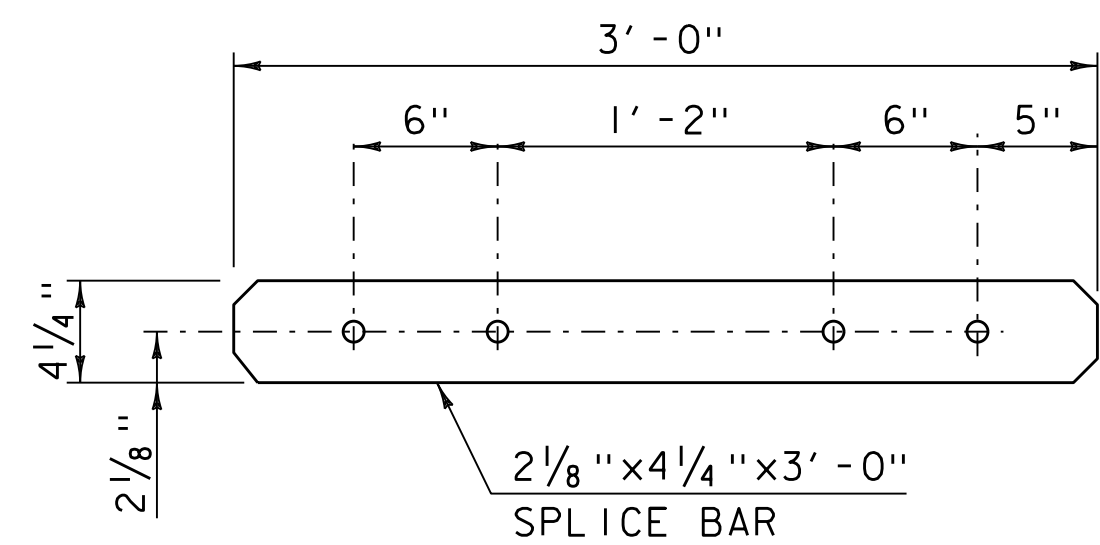
SIDE VIEW
EXPANSION SPLICE TUBE ASSEMBLY



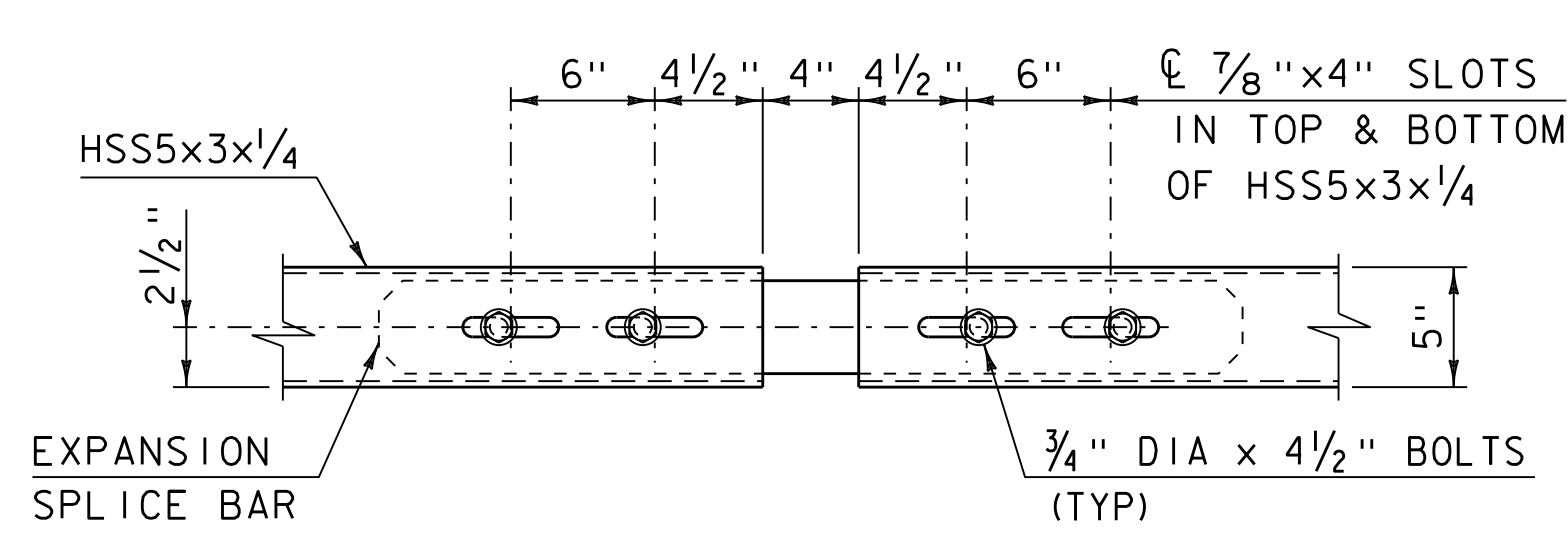
SIDE VIEW
FIXED SPLICE TUBE



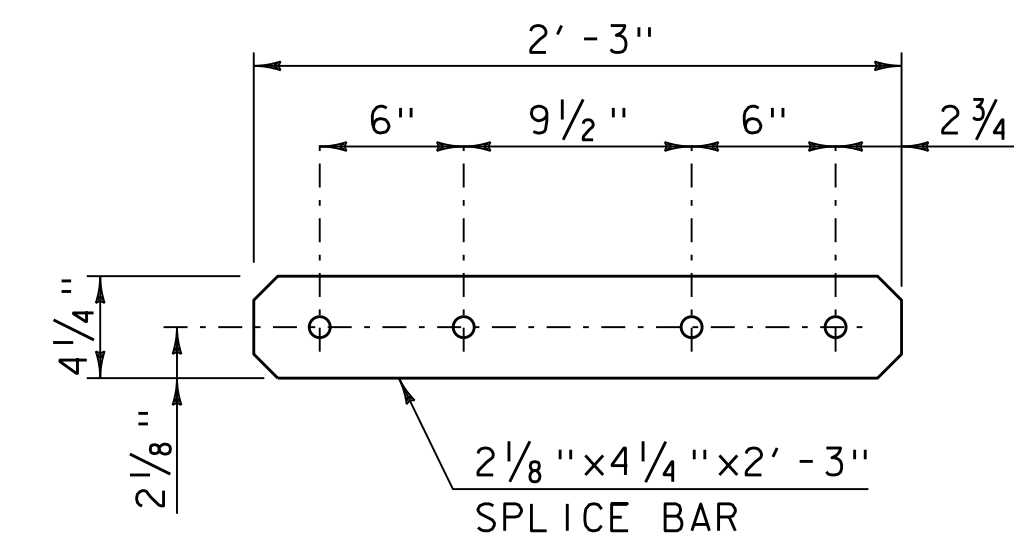
SIDE VIEW
FIXED SPLICE TUBE ASSEMBLY



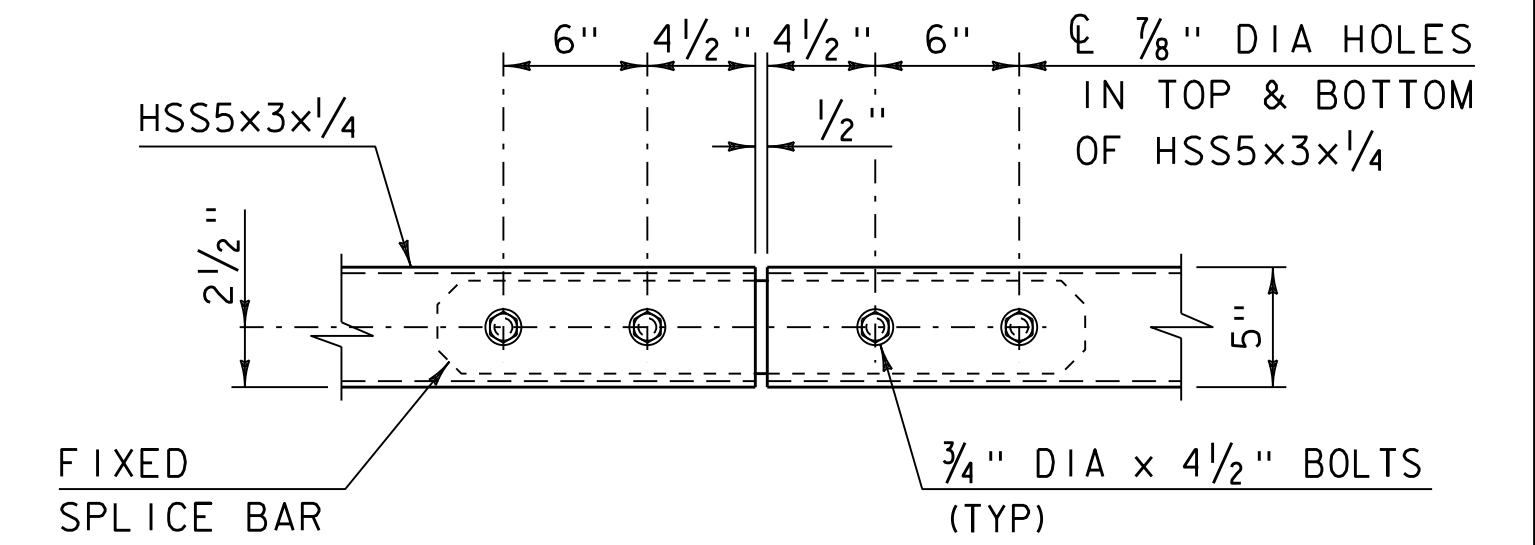
TOP VIEW



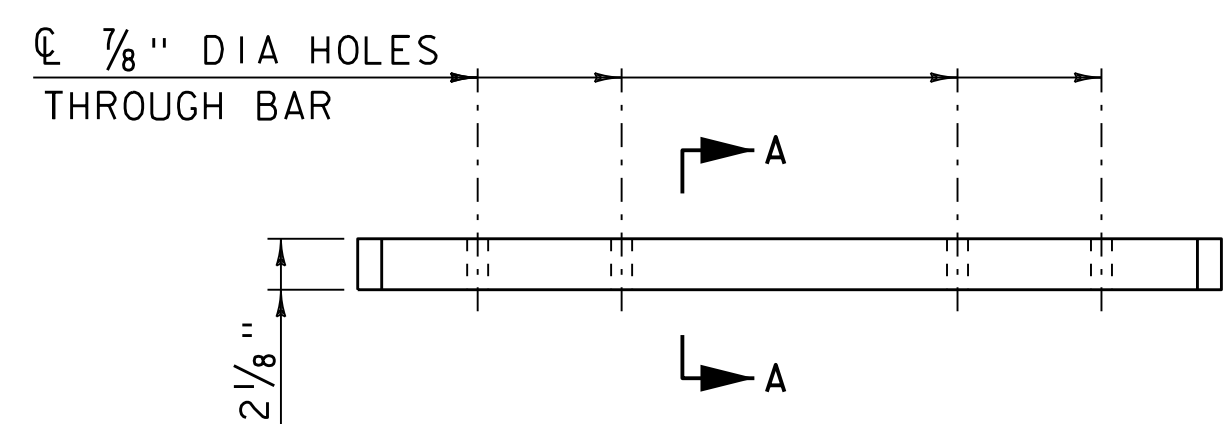
TOP VIEW



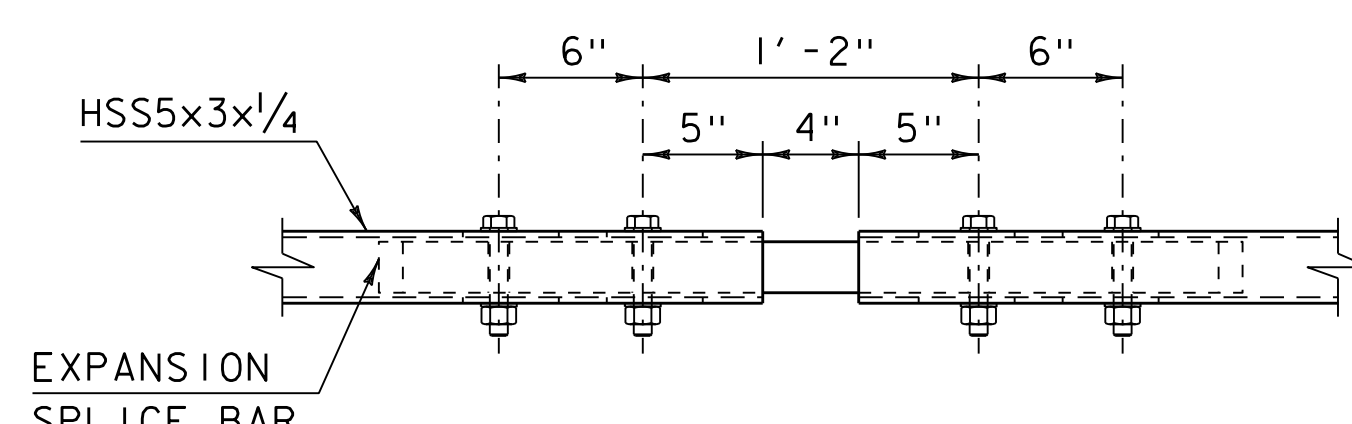
TOP VIEW



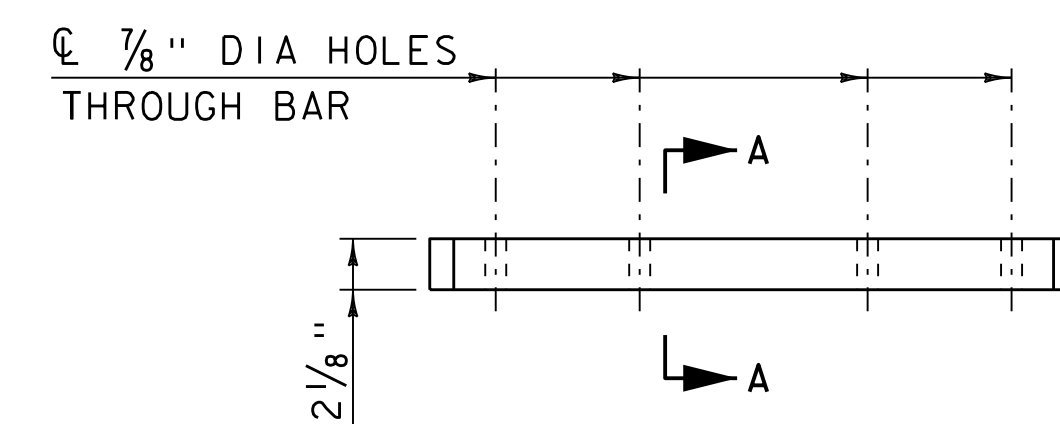
TOP VIEW



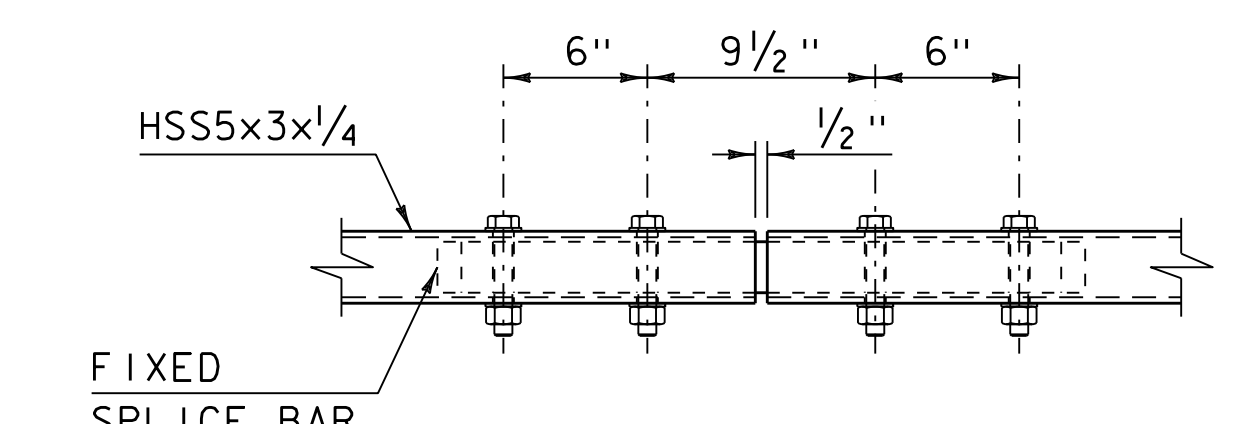
SIDE VIEW
EXPANSION SPLICE BAR



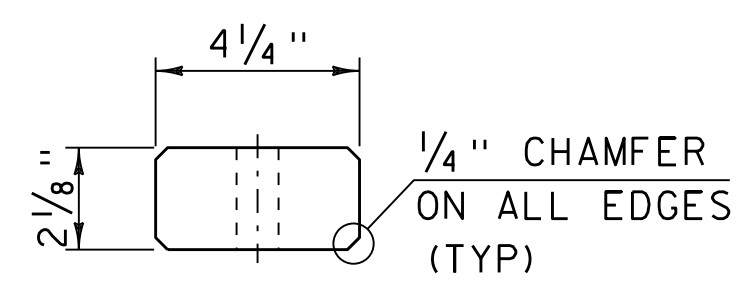
SIDE VIEW
EXPANSION SPLICE BAR ASSEMBLY



SIDE VIEW
FIXED SPLICE BAR



SIDE VIEW
FIXED SPLICE BAR ASSEMBLY



SECTION A-A

NOTES:

1. PROTRUSIONS CAUSED BY WELDING OR GALVANIZING ARE NOT PERMITTED ON THE ADJOINING SURFACES OF THE BOX BEAM RAILS, SPLICE TUBES, SPLICE BARS, AND FILL PLATES.
2. FOUR 3/4" DIAMETER FULLY THREADED BOLTS WITH TWO HARDENED (F436) WASHERS AND A HEAVY HEX NUT ON EACH BOLT. NUT TO BE FINGER TIGHT AND THE FIRST THREAD BELOW THE NUT TO BE BURRED TO PREVENT DISLODGING. FOUR BOLTS AT EACH SPLICE.

REV.	DATE	DESCRIPTION
0	AUG. 9, 2010	ORIGINAL APPROVAL
3	FEB. 2, 2017	BORDER UPDATE, MISC. REVISIONS
4	APR. 7, 2020	ADJUST SPLICE BAR DETAILS
5	FEB. 17, 2022	REMOVED EXTRA NOTES ABOUT GALVANIZING
6	FEB. 15, 2023	REVISED STANDARD TITLE AND PAY ITEMS
OTHER STANDARDS REQUIRED: NONE		
VTRANS AND FHWA APPROVAL ON FILE WITH CONTRACT ADMINISTRATION		

GUARDRAIL APPROACH SECTION, GALVANIZED 3 RAIL BOX BEAM - CURBLESS



STANDARD
S-364C