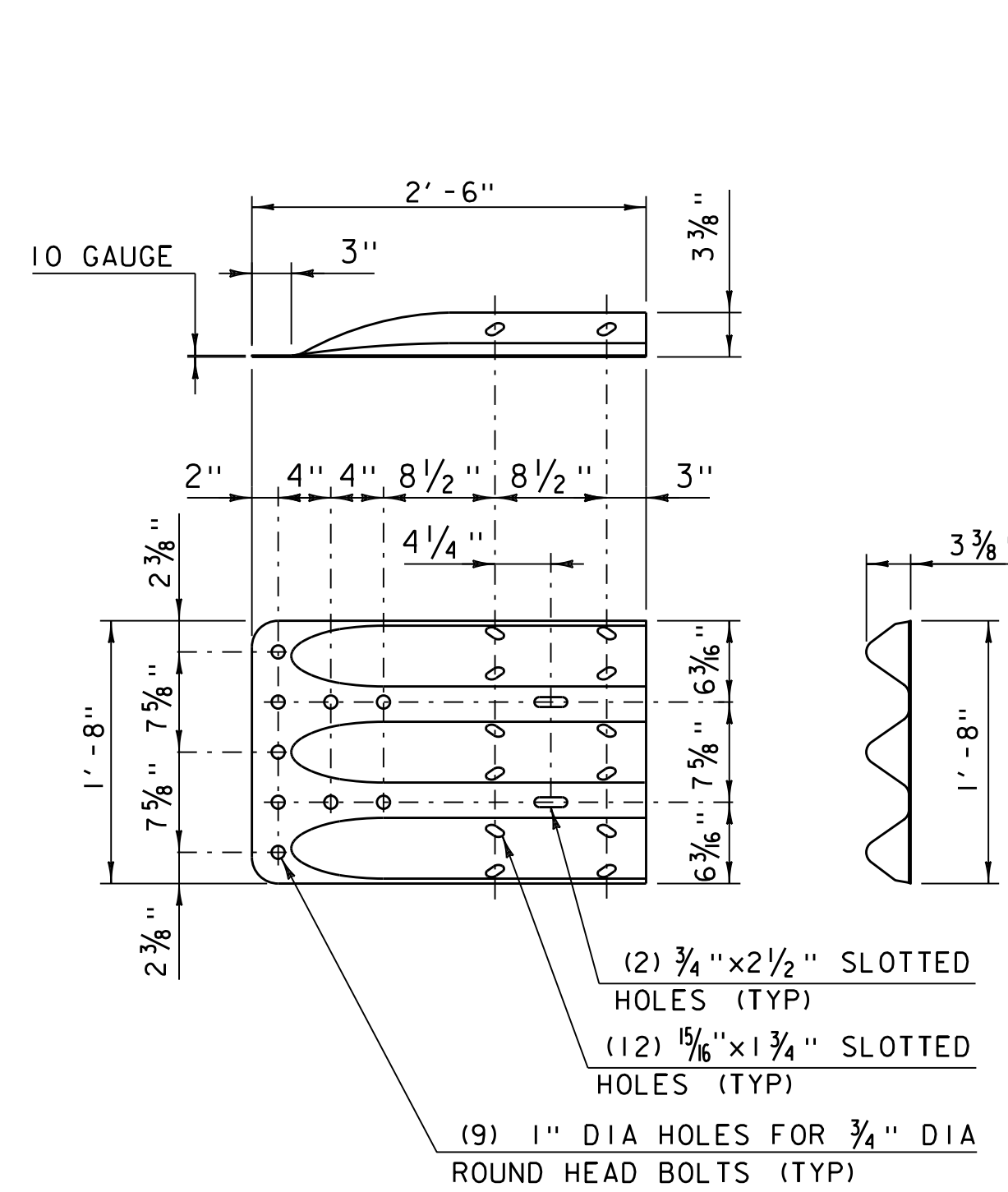


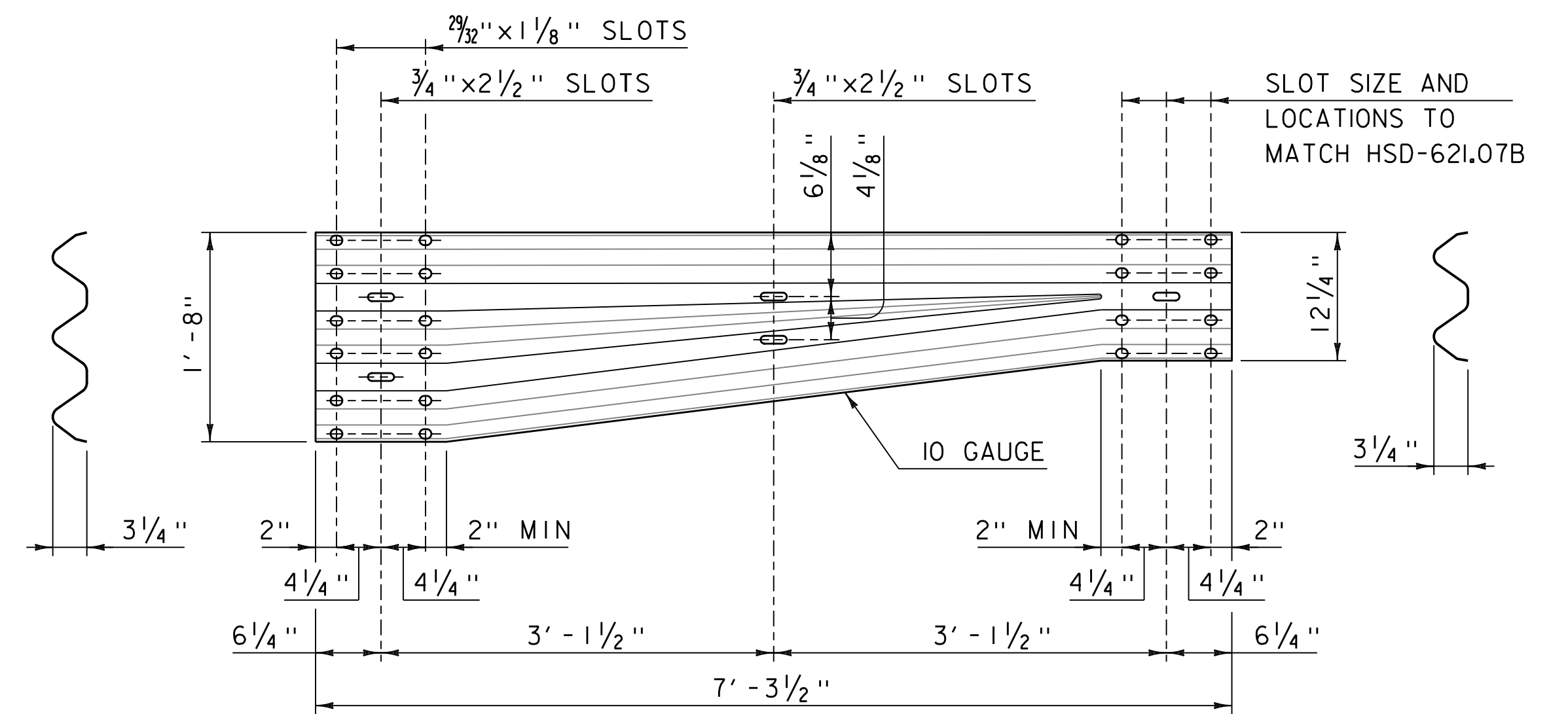
THRIE BEAM GUARDRAIL ASSEMBLY

*POST AND OFFSET BLOCKS SHALL BE OF THE SIZE AND TYPE SPECIFIED IN THE PLANS



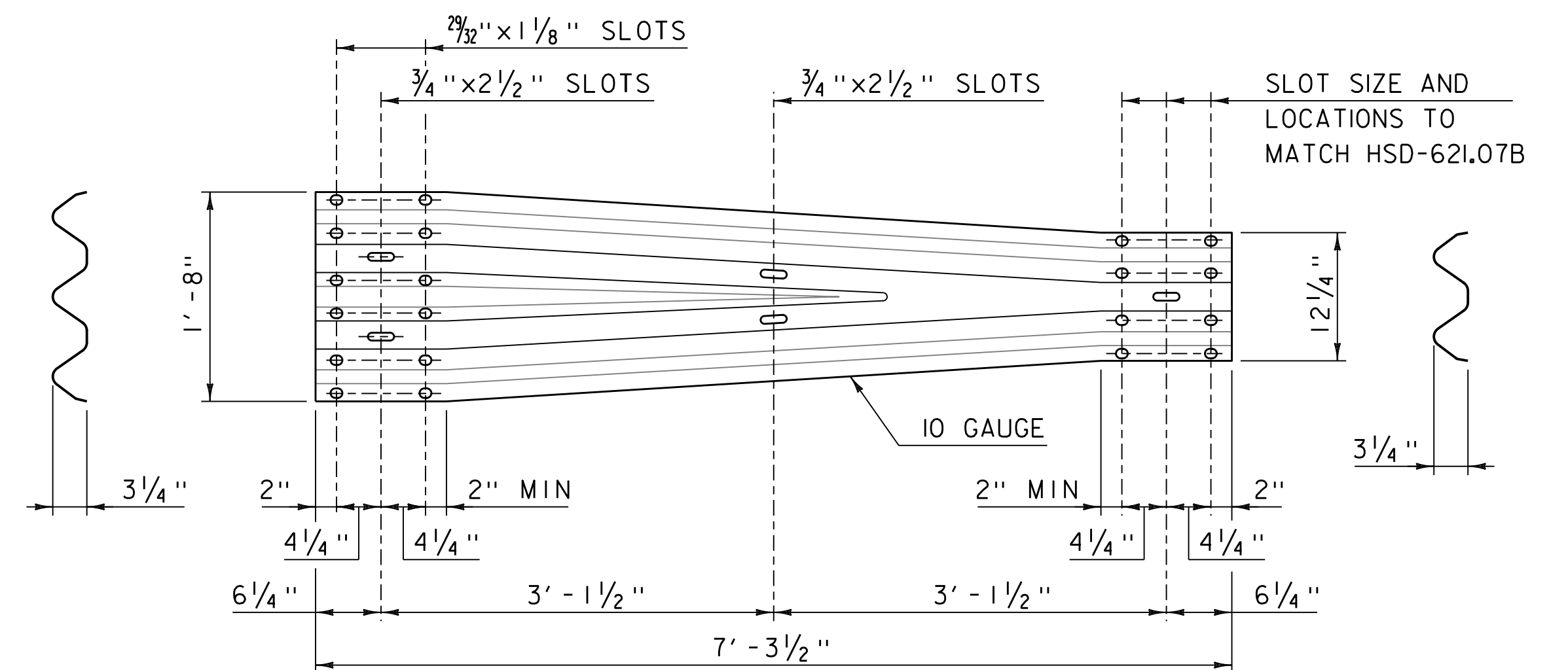
THRIE-BEAM TERMINAL CONNECTOR

(ARTBA RTE01b)



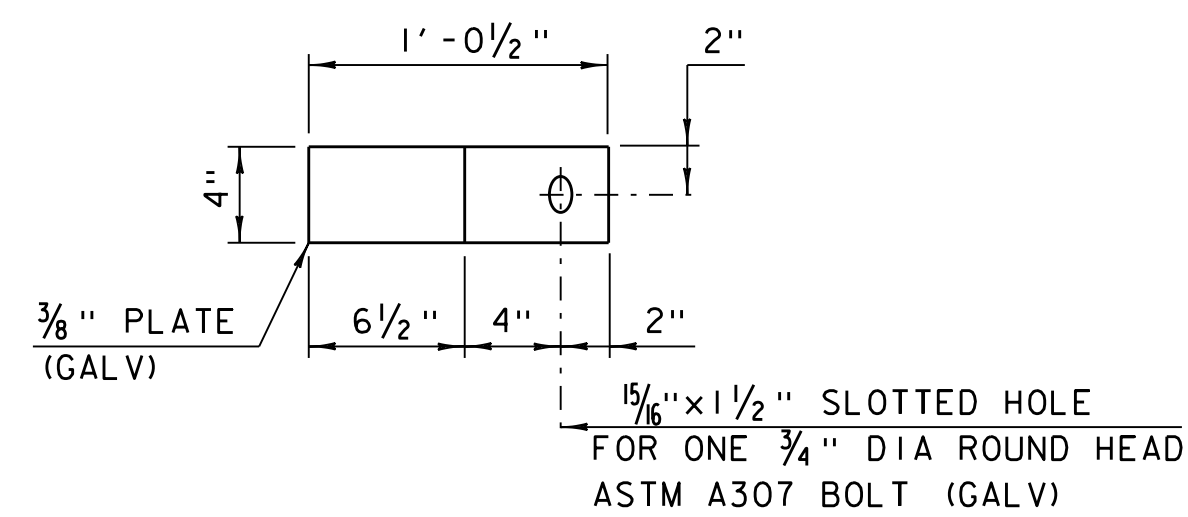
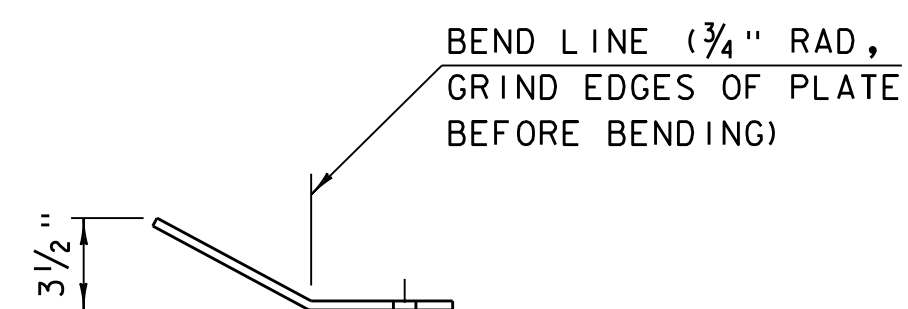
ASYMMETRICAL THRIE-BEAM TO STANDARD STEEL BEAM TRANSITION SECTION

(ARTBA RWT02) (SEE NOTE #1)

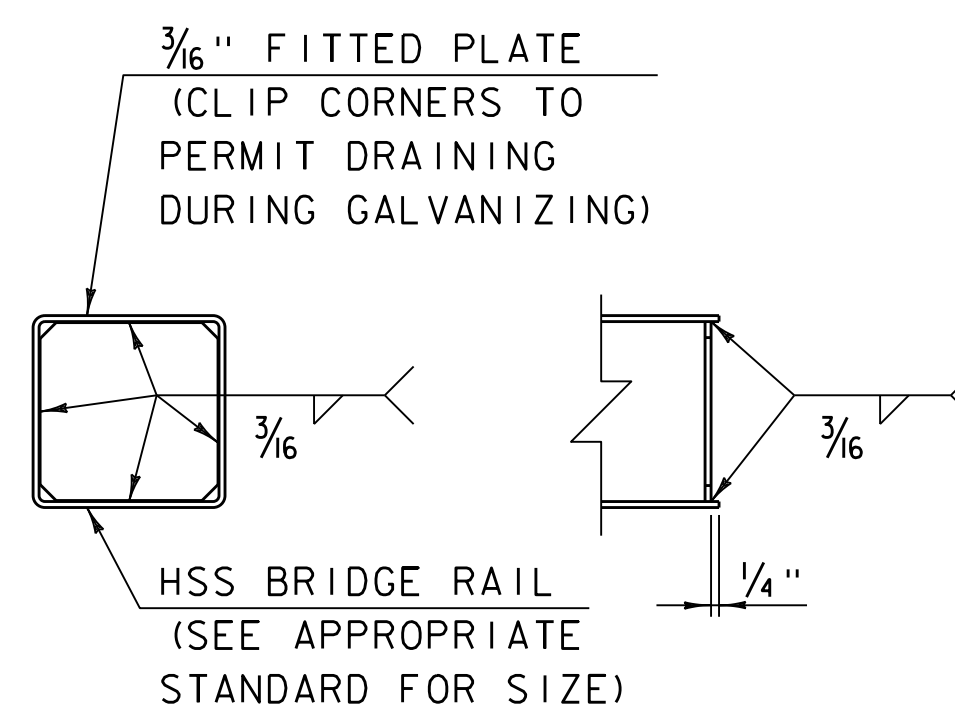


THRIE-BEAM TO STANDARD STEEL BEAM TRANSITION SECTION

(ARTBA RWT01a-b)



DEFLECTOR PLATE DETAIL



END OF RAIL DETAIL

NOTES:

1. THE ASYMMETRICAL THRIE-BEAM TO STANDARD STEEL BEAM TRANSITION SECTION IS TO BE USED WHEN THE STEEL BEAM RAIL HEIGHT IS 32".
2. THRIE-BEAM TO STANDARD STEEL BEAM TRANSITION SECTIONS CANNOT BE BENT WHICH MUST BE ACCOUNTED FOR IN THE GUARDRAIL LAYOUT.

REV.	DATE	DESCRIPTION
0	DEC. 14, 2009	ORIGINAL APPROVAL
2	FEB. 2, 2017	BORDER UPDATE, MISC. REVISIONS
3	APR. 7, 2020	CORRECTED HOLE IN DEFLECTOR PLATE DETAIL
4	FEB 17, 2022	NEW END OF RAIL DETAIL
5	FEB. 15, 2023	NEW THRIE BEAM GUARDRAIL ASSEMBLY DETAIL
OTHER STANDARDS REQUIRED: C-10		
VTRANS AND FHWA APPROVAL ON FILE WITH CONTRACT ADMINISTRATION		

THRIE-BEAM TO STANDARD STEEL BEAM TRANSITION SECTION



**STANDARD
S-363**