

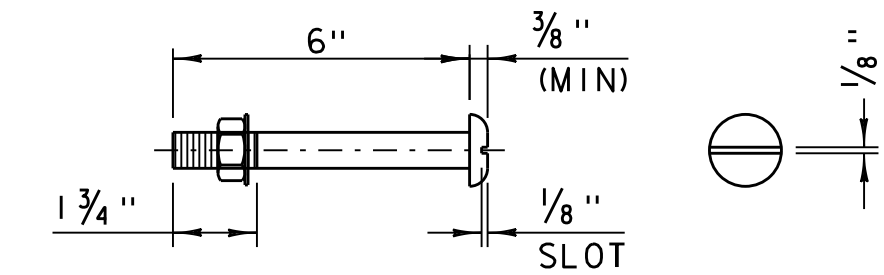
RAIL SPLICE AND EXPANSION JOINT DETAIL

(BOTTOM VIEW)
 *EXPANSION JOINT ONLY
 ** FIXED SPLICE JOINT ONLY

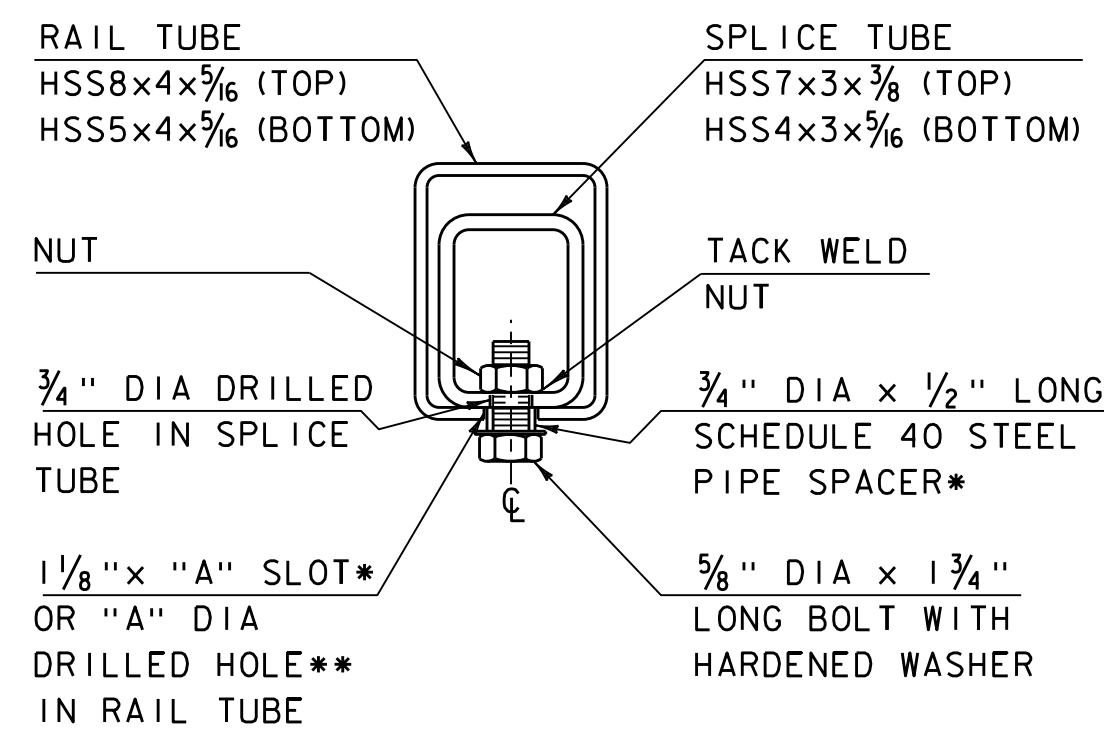
SPLICE TUBE DIMENSION TABLE						
T	A	B	C	D	X	L
** 0"	3/4"	4"	4"	2"	3/4"	1'-8"
* < 3/4"	2 1/2"	4"	4"	2"	2"	1'-8"
* 3/4" ≤ T ≤ 5 1/4"	3 1/2"	5"	5"	2 1/2"	3"	2'-1"

T = TOTAL MOVEMENT OF THE JOINT
 * = EXPANSION JOINT
 ** = FIXED SPLICE JOINT

NOTE: THE TOTAL MOVEMENT OF THE RAIL JOINT TO BE INDICATED IN THE PLANS

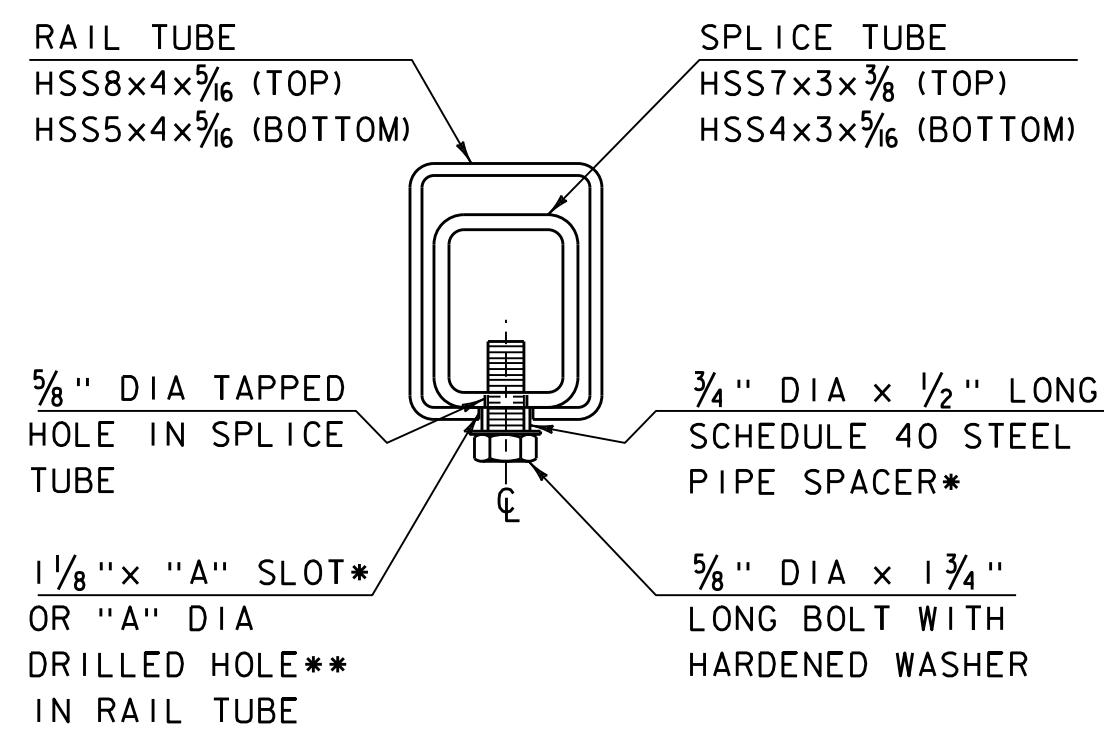


3/4" DIA A449 (TYPE 1) ROUND HEAD BOLT
 (WITH WASHER AND PREVAILING TORQUE TYPE LOCK NUT)
 (SEE NOTE #8 ON S-360A)
 ONLY FULL DIAMETER BODY BOLTS WILL BE ALLOWED.



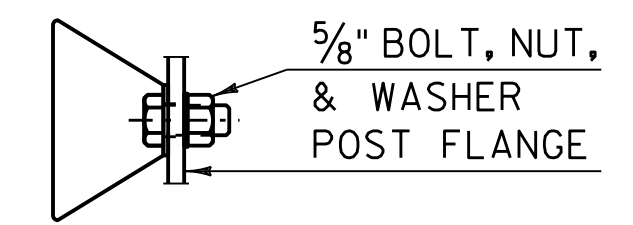
SECTION A-A

*EXPANSION JOINT ONLY
 ** FIXED SPLICE JOINT ONLY

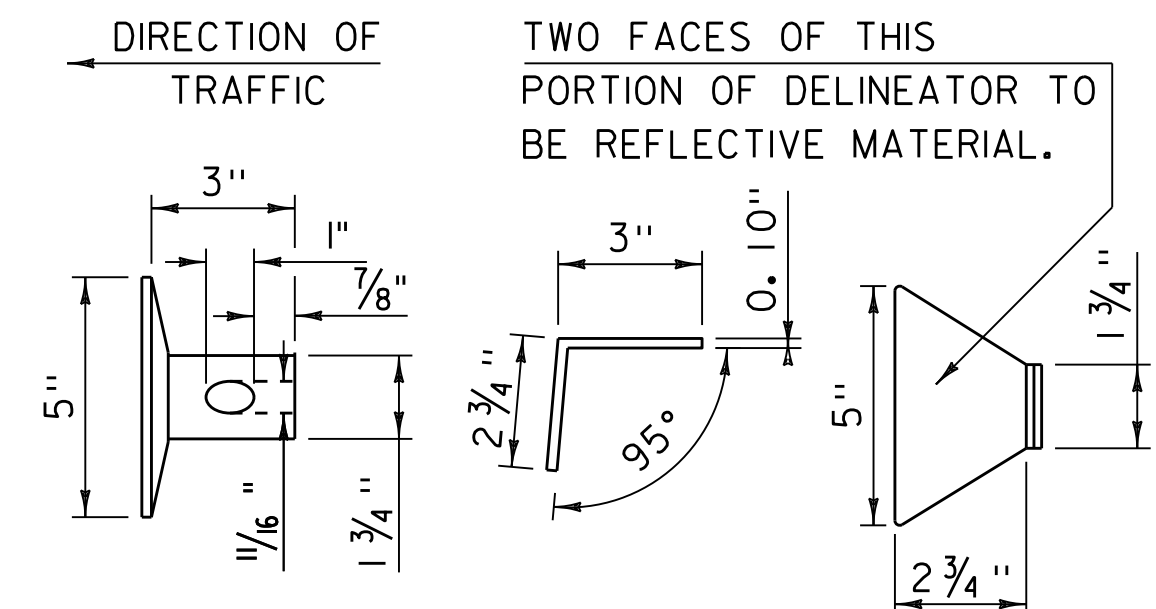


SECTION B-B

*EXPANSION JOINT ONLY
 ** FIXED SPLICE JOINT ONLY

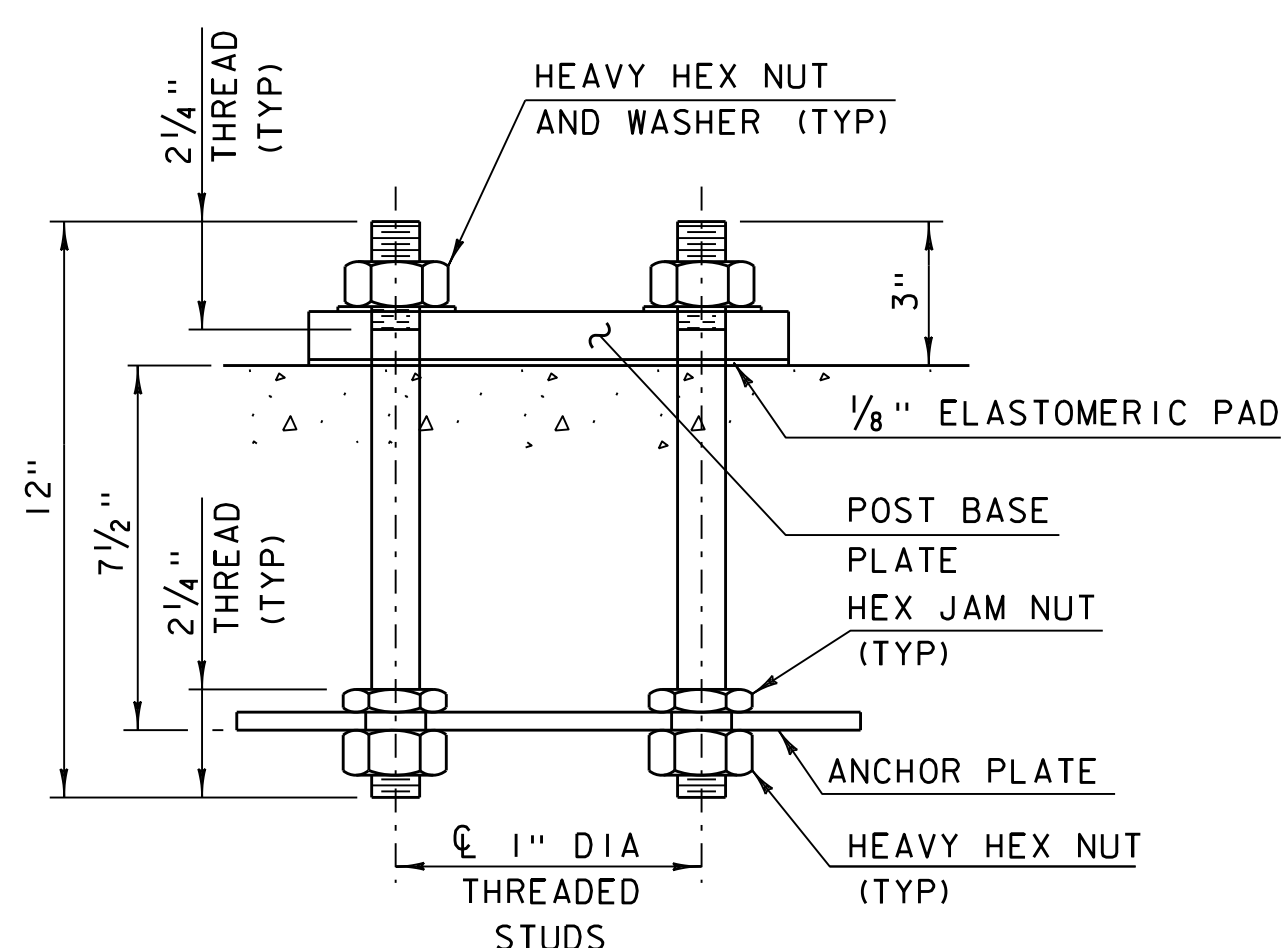


DELINEATOR MOUNTING
 NTS

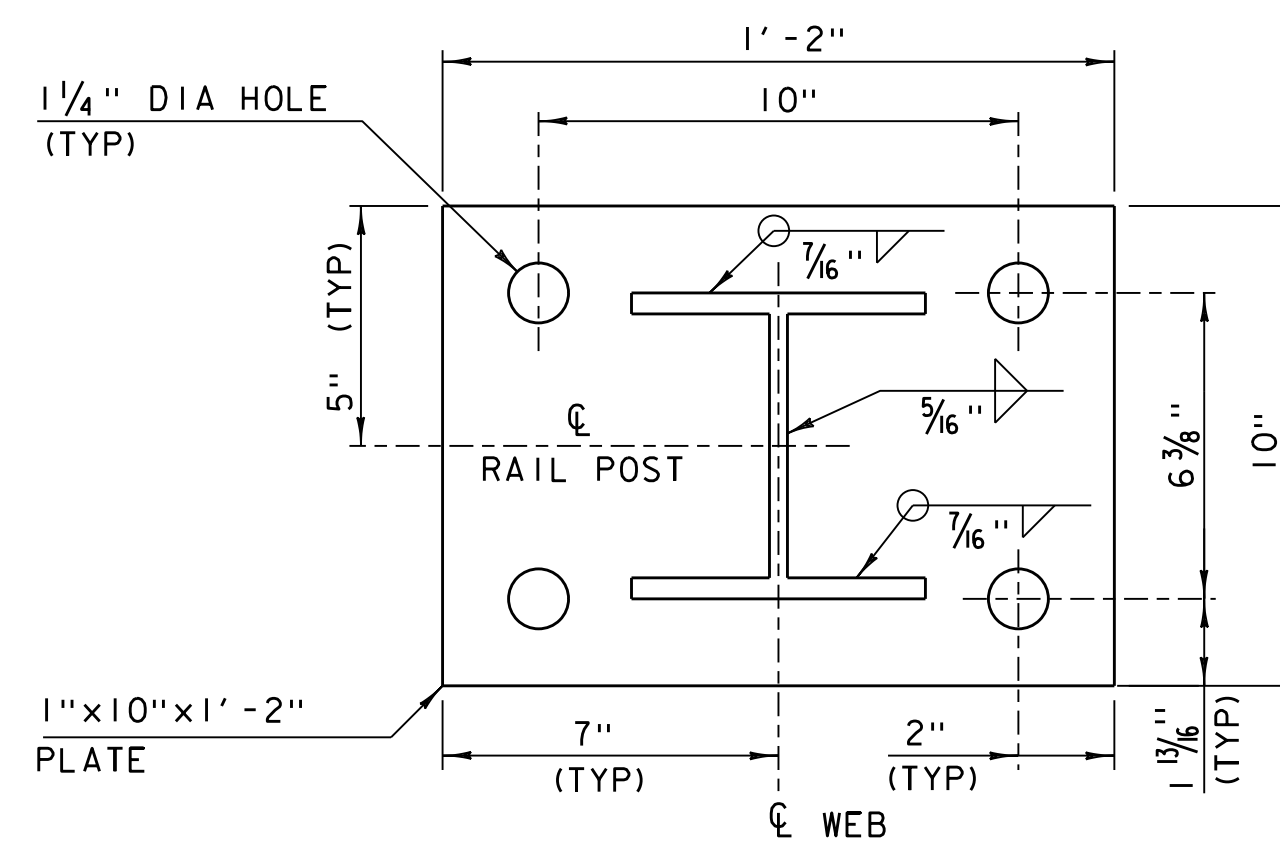


GUARDRAIL DELINEATOR
 NTS

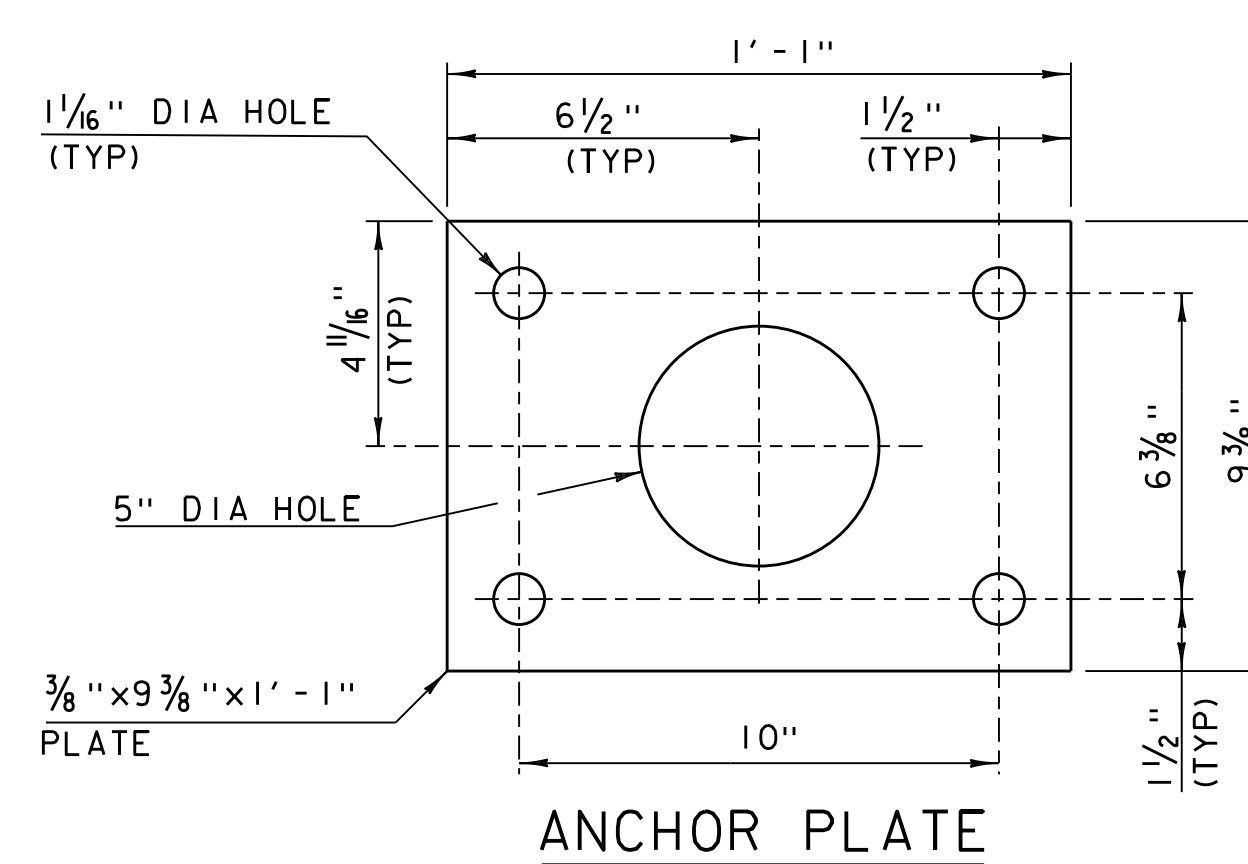
1. GUARDRAIL MOUNTED DELINEATORS SHALL HAVE WHITE RETROREFLECTIVE SHEETING EQUAL TO OR EXCEEDING SUBSECTION 750.08(B)(3) OR YELLOW RETROREFLECTIVE SHEETING EQUAL TO OR EXCEEDING SUBSECTION 750.08(B)(7).
2. DELINEATOR SHALL MEET SPECIFICATION REQUIREMENTS FOR ASTM B209/B209M ALLOY 5052-H32.



RAIL POST ANCHORAGE



POST BASE PLATE



ANCHOR PLATE

REV.	DATE	DESCRIPTION
0	DECEMBER 14, 2009	ORIGINAL APPROVAL
2	MARCH 10, 2017	BORDER UPDATE, MISC. REVISIONS
3	APR. 7, 2020	ADJUSTED TO MATCH NETC 18-01
4	FEB. 17, 2022	UPDATED POST TABLE FOR NEW RAIL SIZE
5	FEB. 15, 2023	UPDATED SPLICE DETAIL AND ADDED A TABLE

OTHER STANDARDS REQUIRED: S-360A
 VTRANS AND FHWA APPROVAL ON FILE WITH CONTRACT ADMINISTRATION

BRIDGE RAILING, GALVANIZED
2 RAIL BOX BEAM



STANDARD
S-360B