

Vermont Climate Council 2025 Update to Vermont's Climate Action Plan

**Rural Resilience & Adaptation Subcommittee
Business Resilience Input Session**



Dennis Curran

Vermont Climate Action Plan

- **2020** Global Warming Solutions Act (GWSA)
- **July 1, 2025** Climate Action Plan Update due; updated every 4 years
- Plan is a roadmap for how to achieve objectives set by GWSA
- **The Update focuses on:**
 - **Cutting Climate Pollution (aka. emissions reductions)**
 - **Adaptation & Resilience in Built and Natural Environment**
 - **Natural and Working Lands Solutions**
 - **Public Health and Housing**

Vermont Climate Action Plan Update

Vermont Climate Council & Subcommittees

Spring and Summer 2024

Council orients update and subcommittees begin work

Fall 2024

Task Groups draft updates to Pathways, Strategies, and Actions.

Subcommittees submit recommendations to Council in **December**

Winter 2025

Council compiles a draft updated plan

Spring 2025

Council revises and finalizes plan based on public input.

Plan delivered by July 1, 2025

Engagement and Outreach



Public kick-off meetings



Eight input sessions: Cross-Sector Mitigation, Rural Resilience, Agriculture & Ecosystems, Municipalities



We are here!



Public consultation on draft plan

Community engagement throughout!

Meeting Vermonters where they are; partnering with community-based orgs; focus groups, etc.

GWSA Definitions

Resilience: the capacity of individuals, communities, and natural and built systems to withstand and recover from climatic events, trends, and disruptions.

Adaptation: reducing vulnerability and advancing resilience through planned and implemented enhancements to, or avoiding degradation of, natural and built systems and structures.

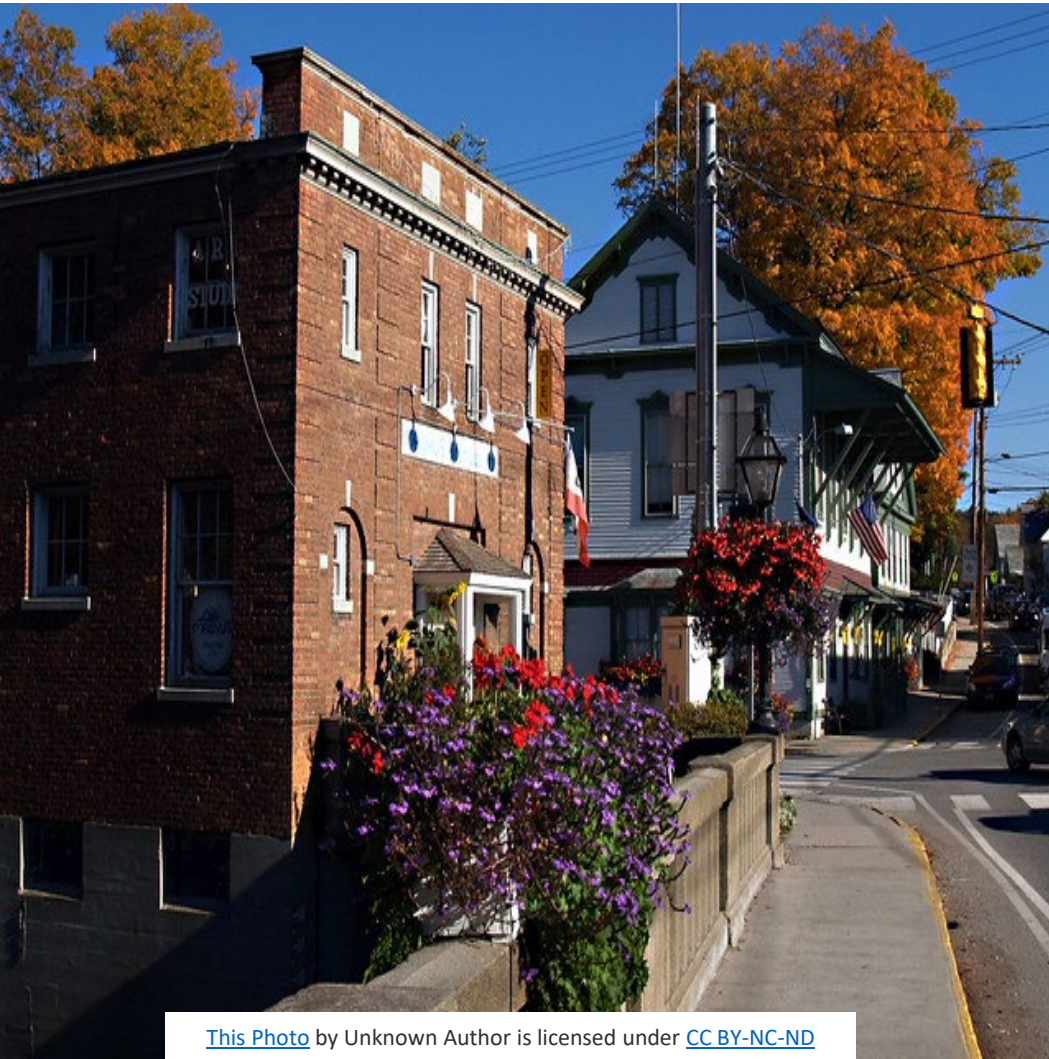


Rural Resilience & Adaptation Subcommittee focuses on:

Identifying, evaluating and analyzing existing and new strategies and programs that build resilience and prepare the State's communities, infrastructure, and economy to adapt to the current and anticipated effects of climate change.

2025 Climate Action Plan resilience focus areas:

**Community Capacity and Planning
Infrastructure and the Built Environment
Public Health**



[This Photo](#) by Unknown Author is licensed under [CC BY-NC-ND](#)

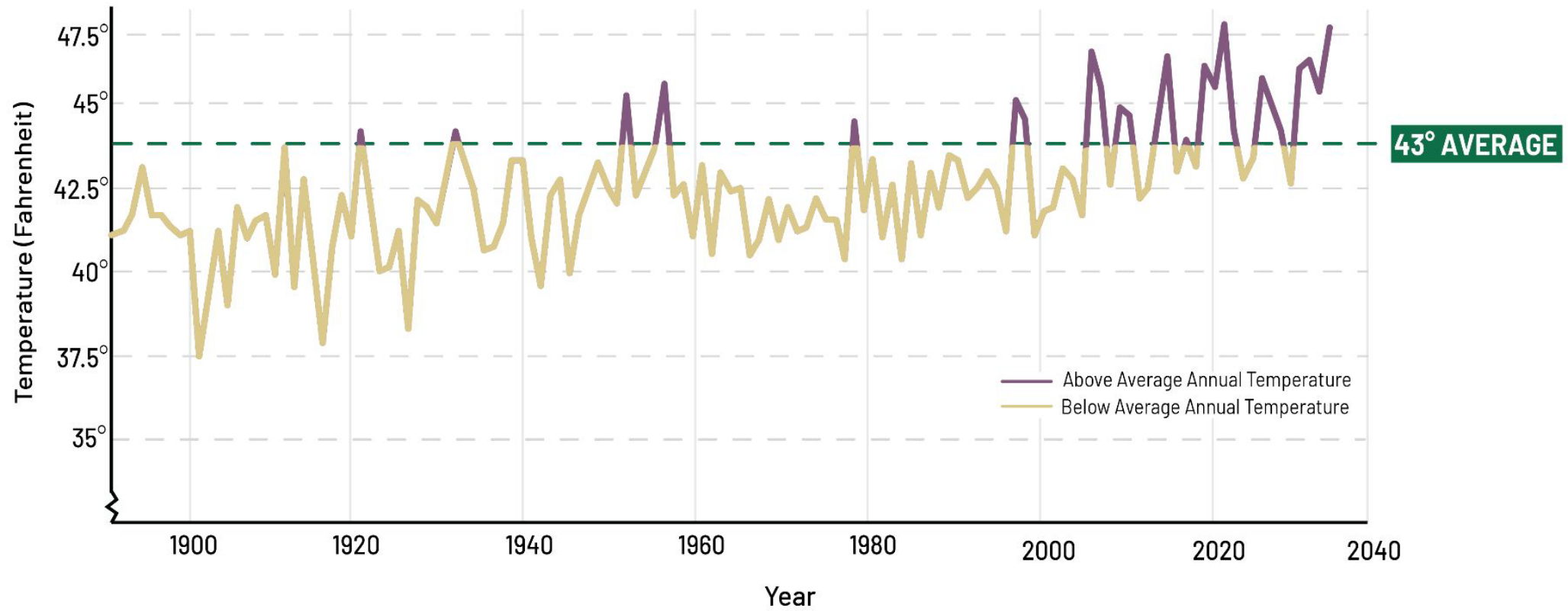
Today, we are concentrating on **business resilience** in the face of climate change impacts.

2021 CAP included actions on:

- Conducting a **climate change impact assessment** for Vermont's commercial and natural resource-based industries.
- Developing programs to address the impacts of **drought, irregular snowfall, and shorter sugaring seasons on Vermont industries.**

VERMONT AVERAGE ANNUAL TEMPERATURES

Source: Northeast Regional Climate Center, 2024



COMMERCIAL RISK

Source: UVM and Vermont Grand List

— Steven's Branch

UVM Inundation Model

- 2-Year Flood
- 5 to 25-Year Flood
- 50-500-Year Flood

Commercial Buildings

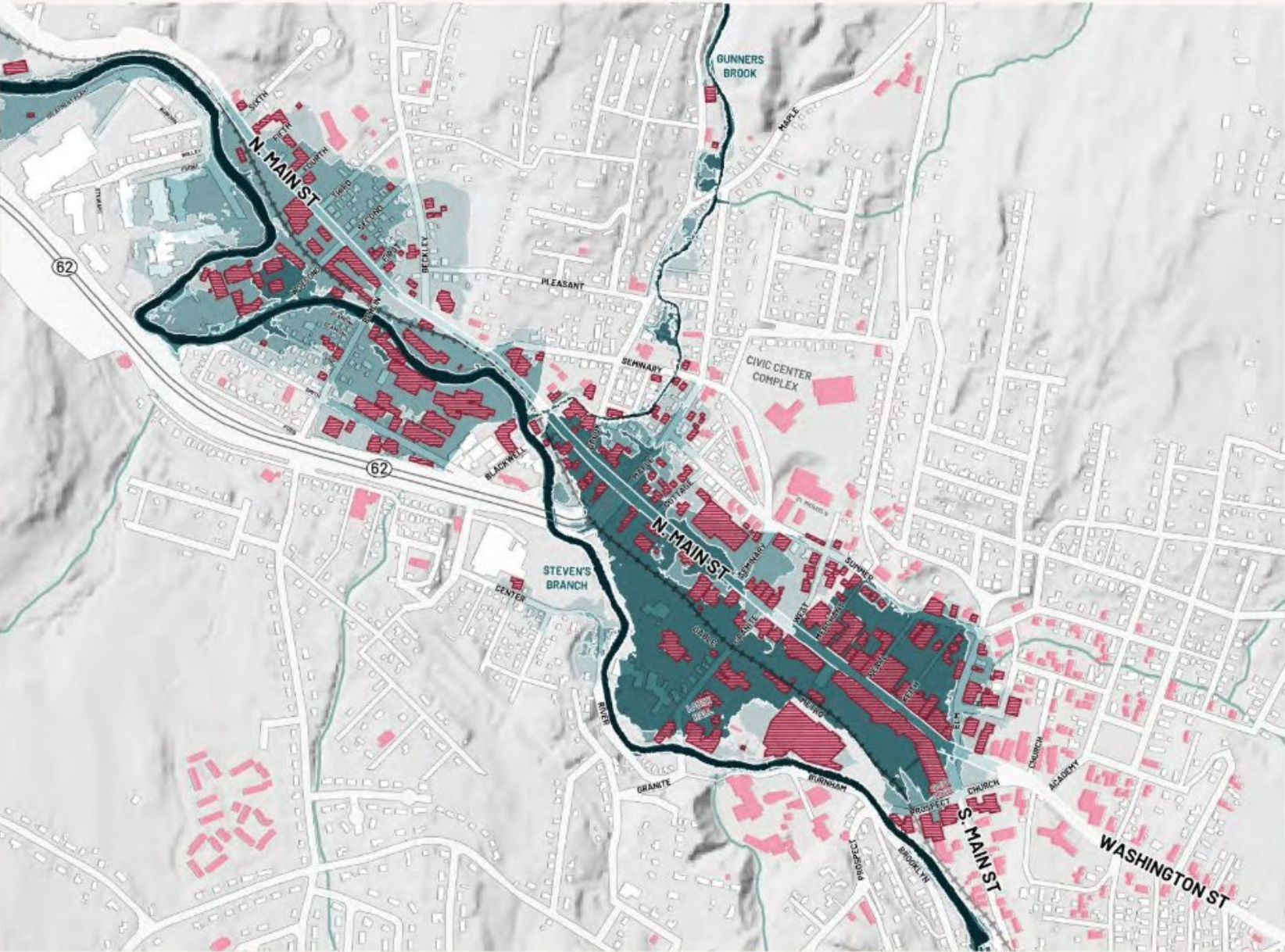
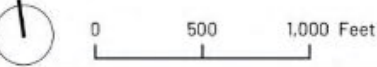
- In Flood Hazard Area
- Not In Flood Hazard Area

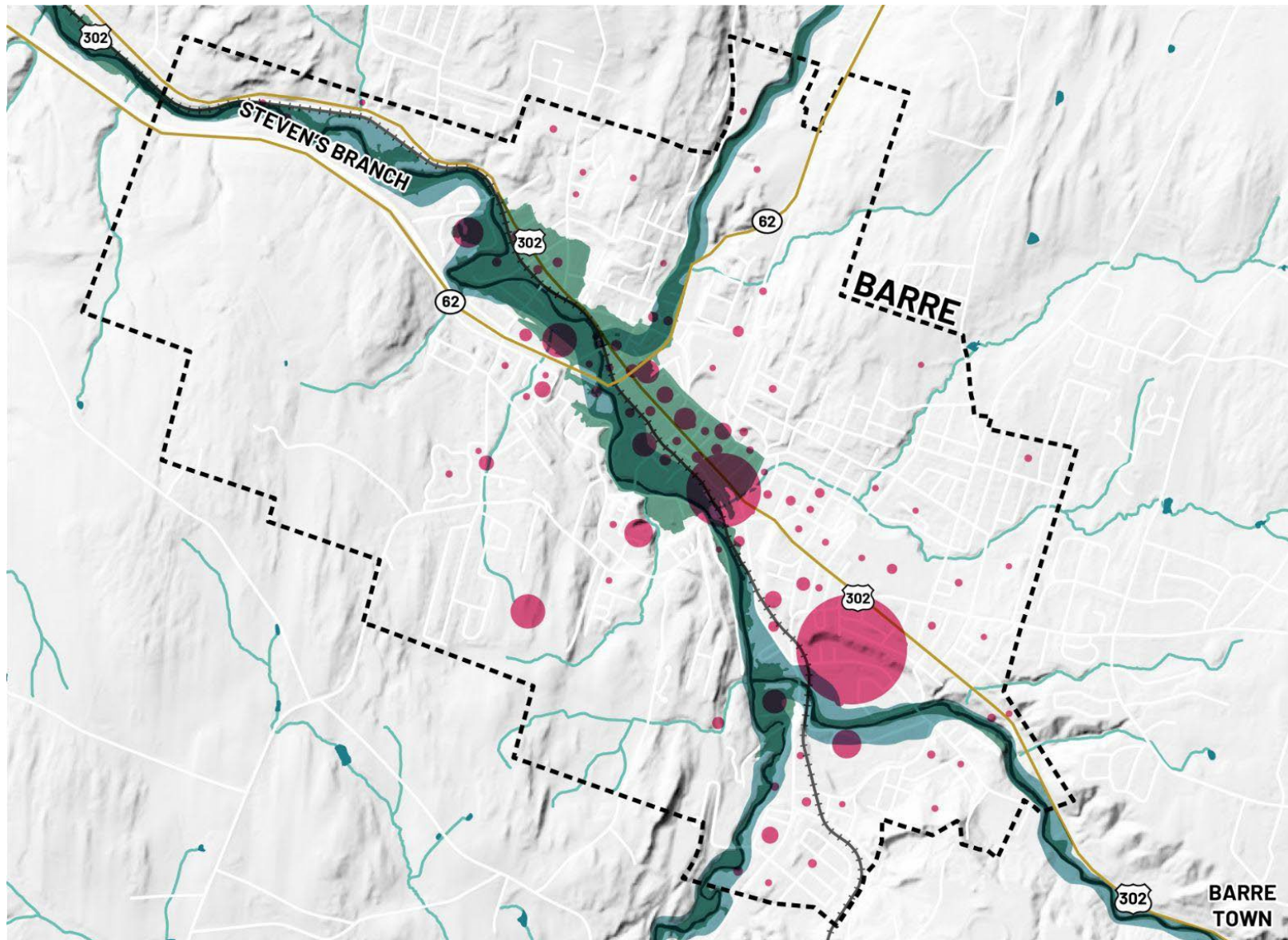
Total Properties Affected:

158 PARCELS (36%) of total commercial property in a **2 year flood**

211 PARCELS (48%) of total commercial property in a **25 year flood**

246 PARCELS (56%) of total commercial property in a **500 year flood**





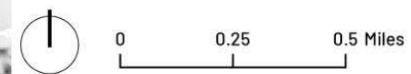
JOB CENTERS

Source: Census, LEHD Employment Statistics (2021)

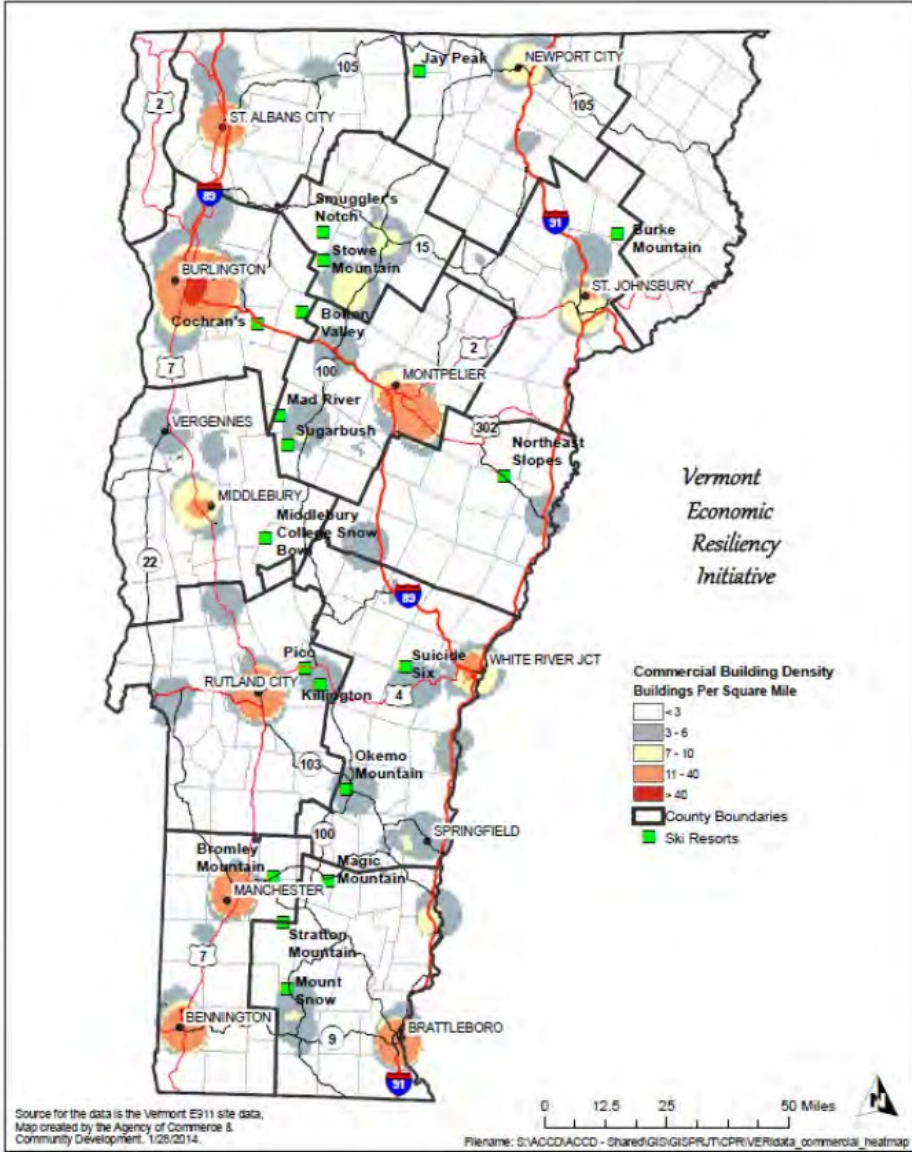
- Township Boundary
- Rivers and Lakes
- Flood Hazard Areas (FEMA)
- River Corridors (VT)
- Streams
- Major Roadways
- Railroad

NUMBER OF WORKERS

- <10
- 50
- 100
- 250
- 500



Map of Vermont Commercial Site Density



AP News

Vermont ski town says it's 'waiting with open arms' for the winter season after severe flooding

Ludlow businesses that lost out on summer tourism want to get the word out that they are open, even though some are still in the throes of rebuilding.



Oct ARTS

'Creativity is the name of the game': Weston Theater Company adjusts again to flooding



Brent Hallenbeck

The Guardian

'It is devastating': unprecedented floods in US strain small businesses

As the climate crisis causes heavier and more frequent floods across the US, one in four small businesses are one disaster away from shutting down.

Jul 18, 2024



Flood-related road closures impact businesses in the Mad River Valley

"When the traffic slows down in July, it's impactful," Mad River Valley feels the effects of road flood-related road closures during peak summer season.

CAP Resilience in Communities and the Build Environment Pathways

Pathway 1 - Increase **capacity for climate resilience planning and implementation**, and **address inequities** of under-resourced communities.

Pathway 2 - Proactively and strategically **invest to enhance resilience** in transportation, communications, water/wastewater, and energy **infrastructure** statewide.

Pathway 3 - Support the **reduction of** municipal, school district, residential, university, and hospital **fossil fuel use** in rural areas through equitable best practices that address the unique challenges of rural communities.

Pathway 4 - Change Vermont's **land-use policies** so current and future land development will be **adaptive and resilient** to climate change impacts.

Pathway 5 - Ensure that all people have **access to** safe, accessible, energy efficient, and affordable **housing**.

Pathway 6 – *Climate Change impacts on **Public Health**.*

Community Capacity for Planning and Implementation

Pathway 1: Increase capacity for climate resilience planning and implementation, and address inequities of under-resourced communities.



Strategy 1: Provide tools and resources to **help communities assess climate vulnerabilities** and create climate resilience plans.



Strategy 2: Establish **permanent statewide funding** and technical support for local and regional climate resilience planning and project implementation to enhance rural resilience to impacts of climate change.



Strategy 3: Expand **cross-sector collaboration** to align efforts, share best practices, and leverage resources to advance resilience and preparedness efforts statewide.



Strategy 4 : Increase **community participation in local governance** and support civic engagement and citizen involvement.

Invest in Resilience Infrastructure

Pathway 2: Proactively and strategically invest to enhance resilience in transportation, communications, water/wastewater, and energy infrastructure statewide.



Strategy 1: Create a policy, planning and organizational foundation to **support effective investments in infrastructure resilience.**



Strategy 2: Public, private, and nonprofit entities should be prepared to **respond and recover quickly to disruptions** caused by severe weather and other climate change threats.



Strategy 3: Increase the resilience of critical infrastructure to severe weather and other climate change threats by **reducing vulnerabilities of specific facilities.**



Strategy 4 : Increase the resilience of critical infrastructure to severe weather and other climate change threats by **improving system efficiency, reliability and redundancies.**

Rural Communities, Businesses, and Institutions Fuel Use Reduction

Pathway 3: Support the reduction of municipal, school district, residential, university, and hospital fossil fuel use in rural areas through equitable best practices that address the unique challenges of rural communities.



Strategy 1: Provide tools and resources to **help assess data needs and establish best practices for rural communities, businesses, and institutions to reduce fossil fuel use.**



Strategy 2: Equitably **expand access to programs** that provide options to rural homeowners, landlords, municipalities, school districts, universities, and hospitals for weatherization, electrification, and utility upgrades.

Adaptation and Resilience Through Land-Use Policy

Pathway 4: Change Vermont's land-use policies so current and future land development will be adaptive and resilient to climate change impacts.



Strategy 1: **Increase investment in the infrastructure** (sewer, water, stormwater, sidewalks, bike lanes, EV charging, broadband, energy supply) needed to support communities that are more resilient to climate disruptions, equitable, resource efficient, and protects the adaptive capacity of natural resources.



Strategy 2: **Develop permanent private and public funding sources to flood-proof**, elevate and purchase commercial and residential properties, as well as conserve and restore ecosystem services upstream to protect our people, property, environment, and economy from flooding.

Access to Housing

Pathway 5: Ensure that all people have access to safe, accessible, energy efficient, and affordable housing.



Strategy 1: Update state and local land-use governance, regulations, practices, and investments to **eliminate barriers to housing development.**



Strategy 2: Increase investments in the **preservation and development of both private-market and nonprofit-owned affordable housing.**



Strategy 3: **Increase access to fair and affordable housing** for Vermonters who are housing instable.

Public Health Impacts

Pathway 6: *Climate Change impacts on Public Health.*



Strategy 1: **Identify and communicate risks** to public health due to climate change exacerbated hazards.



Strategy 2: Emphasize the **importance of mental health services** for communities and individuals impacted.



Strategy 3: **Prepare municipalities to play a more active role** in communications and emergency health impacts preparedness.

Cross-Cutting Pathways

Workforce Development



Strategy 1: Further support where licensing occurs and review opportunities where it does not currently take place that would **enhance a climate workforce**

Support compact settlement patterns that contribute to the reduction of GHG emissions, enhance community and built environment resilience, and help conserve natural and working lands.



Strategy 1: **Increase investment in the infrastructure** (sewer, water, stormwater, transportation, mixed-use development, housing, sidewalks, bike lanes, EV charging, broadband, energy supply) **needed to support resilient, compact, walkable development.**



Strategy 2: **Update state and local land-use policies, regulations, and practices to remove barriers to compact settlement** and improve coordination on land use and development planning and implementation across agencies, departments, municipalities, boards, commissions, and authorities.



Strategy 3: **Fund research, data collection and digital maps** to provide insights on land use decisions in Vermont and the impact it can have on climate and resilience goals and outcomes.

Building Codes: Ensure that existing or potential codes or standards account for anticipated climate hazards.



Group Discussion

- Disaster preparedness and response: What support does the business community most need?
- Long-term resilience: Beyond immediate recovery, how can businesses build resilience to climate change impacts? What do you have the capacity to do?
- Engagement: How might businesses be better included in state, regional, and local resilience planning?
- What is missing? Has the subcommittee overlooked a key resilience issue?

Next Steps

Stay involved!

- Sign up for the [Climate Action Office's newsletter](#) (link in chat)
- Attend a subcommittee meeting or another input session: climatechange.vermont.gov/calendar
- Share your thoughts!
 - [Climate Action Plan public comment form](#) (link in chat)
 - Leave a voice message at 802-404-2729