

# **Vermont Climate Council 2025 Update to Vermont's Climate Action Plan**

**Rural Resilience & Adaptation Subcommittee  
Municipal Support Input Session**



# Vermont Climate Action Plan

Dennis Curran

- **2020** Global Warming Solutions Act (GWSA)
- **July 1, 2025** Climate Action Plan Update due; updated every 4 years
- Plan is a roadmap for how to achieve objectives set by GWSA
- **The Update focuses on:**
  - **Cutting Climate Pollution (aka. emissions reductions)**
  - **Adaptation & Resilience in Built and Natural Environment**
  - **Natural and Working Lands Solutions**
  - **Public Health and Housing**

# Vermont Climate Action Plan Update

## Vermont Climate Council & Subcommittees

### Spring and Summer 2024

Council orients update and subcommittees begin work

### Fall 2024

Task Groups draft updates to Pathways, Strategies, and Actions.

Subcommittees submit recommendations to Council in **December**

### Winter 2025

Council compiles a draft updated plan

### Spring 2025

Council revises and finalizes plan based on public input.

Plan delivered by July 1, 2025

## Engagement and Outreach



Public kick-off meetings



Eight input sessions: Cross-Sector Mitigation, Rural Resilience, Agriculture & Ecosystems, Municipalities



We are here!



Public consultation on draft plan

### Community engagement throughout!

Meeting Vermonters where they are; partnering with community-based orgs; focus groups, etc.

# GWSA Definitions

**Resilience:** the capacity of individuals, communities, and natural and built systems to withstand and recover from climatic events, trends, and disruptions.

**Adaptation:** reducing vulnerability and advancing resilience through planned and implemented enhancements to, or avoiding degradation of, natural and built systems and structures.





## **Rural Resilience & Adaptation Subcommittee focuses on:**

Identifying, evaluating and analyzing existing and new strategies and programs that build resilience and prepare the State's communities, infrastructure, and economy to adapt to the current and anticipated effects of climate change.

### **2025 Climate Action Plan resilience focus areas:**

**Community Capacity and Planning  
Infrastructure and the Built Environment  
Public Health**



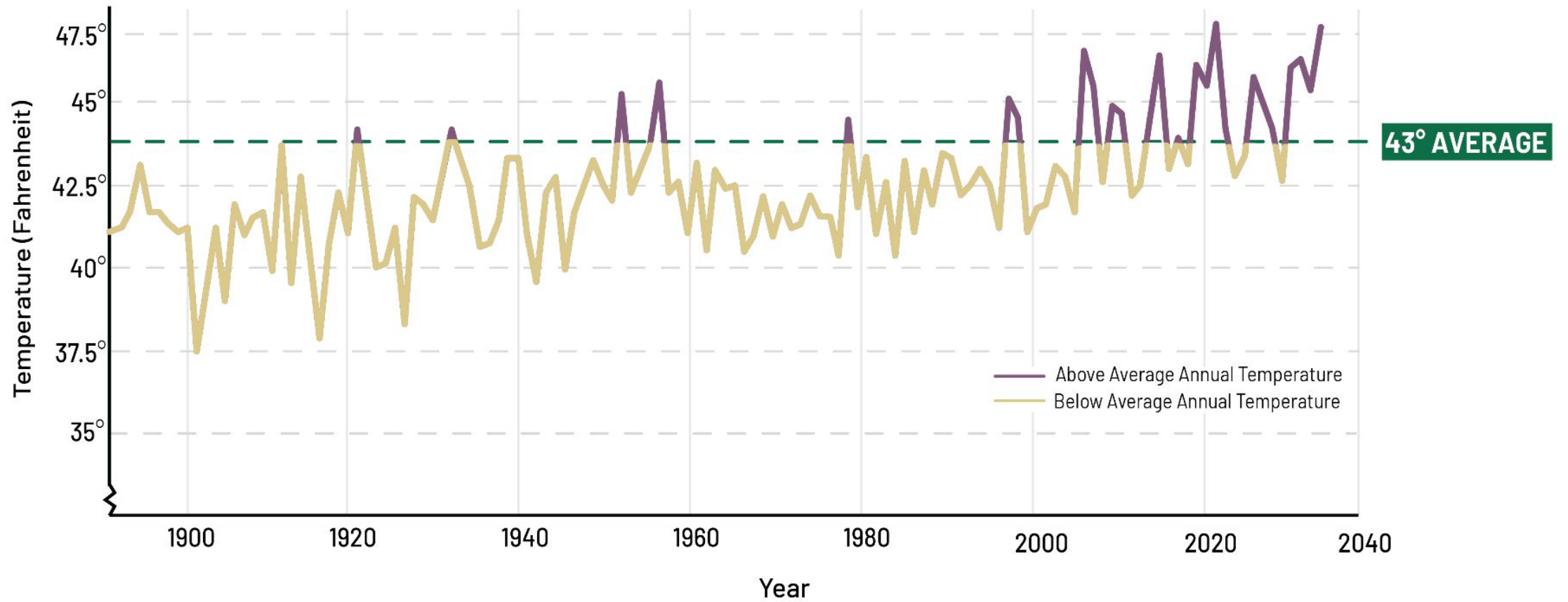
Today, we are concentrating on **support to municipalities** to adapt to the impacts of climate change.

GWSA charges the Council with:

- **Recommending and developing tools** for municipalities to assess their climate preparedness
- Addressing pressures climate change will pose to **rural infrastructure**
- **Minimizing impact of the energy transition** on marginalized and rural communities

# VERMONT AVERAGE ANNUAL TEMPERATURES

Source: Northeast Regional Climate Center, 2024







AP News

## Flood damage outpaces some repairs in hard-hit Vermont town

The Vermont town of Lyndon was hit by severe flash floods twice last month. As residents brace for the remnants of Tropical Storm Debby to...

Aug 9, 2024



Vermont Public

## Flash flooding tears through rural communities in Vermont's Northeast Kingdom

Flash flooding in far-flung pockets of the Northeast Kingdom has destroyed houses, stranded homeowners and left longtime residents of rural communities on edge.

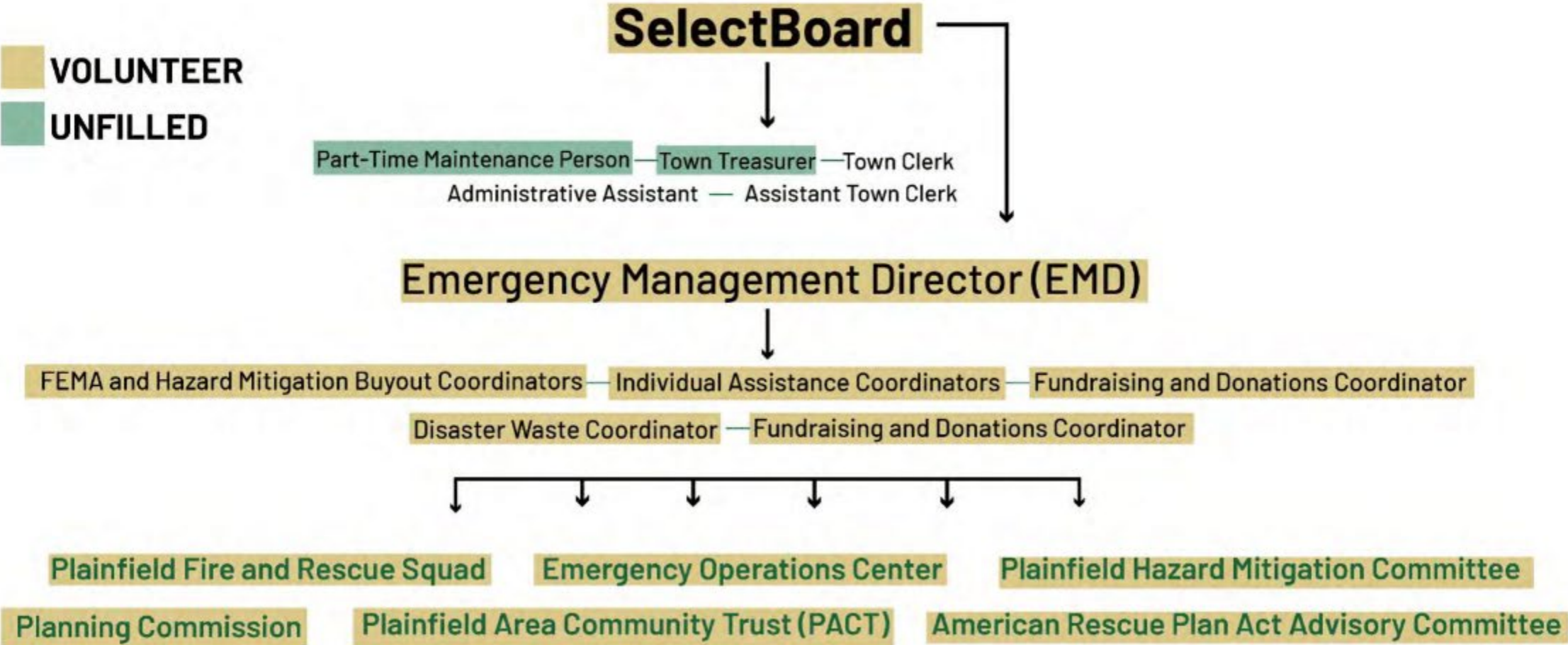
Jul 30, 2024



Glenn Russell/ VTDigger



# PLAINFIELD EMERGENCY MANAGEMENT RUNS ON VOLUNTEERS



# CAP Resilience in Communities and the Build Environment Pathways

Pathway 1 - Increase **capacity for climate resilience planning and implementation**, and **address inequities** of under-resourced communities.

Pathway 2 - Proactively and strategically **invest to enhance resilience** in transportation, communications, water/wastewater, and energy **infrastructure** statewide.

Pathway 3 - Support the **reduction of** municipal, school district, residential, university, and hospital **fossil fuel use** in rural areas through equitable best practices that address the unique challenges of rural communities.

Pathway 4 - Change Vermont's **land-use policies** so current and future land development will be **adaptive and resilient** to climate change impacts.

Pathway 5 - Ensure that all people have **access to** safe, accessible, energy efficient, and affordable **housing**.

Pathway 6 – *Climate Change impacts on **Public Health**.*



# Community Capacity for Planning and Implementation

Pathway 1: Increase capacity for climate resilience planning and implementation, and address inequities of under-resourced communities.



Strategy 1: Provide tools and resources to **help communities assess climate vulnerabilities** and create climate resilience plans.



Strategy 2: Establish **permanent statewide funding** and technical support for local and regional climate resilience planning and project implementation to enhance rural resilience to impacts of climate change.



Strategy 3: Expand **cross-sector collaboration** to align efforts, share best practices, and leverage resources to advance resilience and preparedness efforts statewide.



Strategy 4 : Increase **community participation in local governance** and support civic engagement and citizen involvement.

# Invest in Resilient Infrastructure

Pathway 2: Proactively and strategically invest to enhance resilience in transportation, communications, water/wastewater, and energy infrastructure statewide.



Strategy 1: Create a policy, planning and organizational foundation to **support effective investments in infrastructure resilience**.



Strategy 2: Public, private, and nonprofit entities should be prepared to **respond and recover quickly to disruptions** caused by severe weather and other climate change threats.



Strategy 3: Increase the resilience of critical infrastructure to severe weather and other climate change threats by **reducing vulnerabilities of specific facilities**.



Strategy 4 : Increase the resilience of critical infrastructure to severe weather and other climate change threats by **improving system efficiency, reliability and redundancies**.



# Rural Communities, Businesses, and Institutions Fuel Use Reduction

Pathway 3: Support the reduction of municipal, school district, residential, university, and hospital fossil fuel use in rural areas through equitable best practices that address the unique challenges of rural communities.



Strategy 1: Provide tools and resources to **help assess data needs and establish best practices for rural communities, businesses, and institutions to reduce fossil fuel use.**



Strategy 2: Equitably **expand access to programs** that provide options to rural homeowners, landlords, municipalities, school districts, universities, and hospitals for weatherization, electrification, and utility upgrades.

# Adaptation and Resilience Through Land-Use Policy

Pathway 4: Change Vermont's land-use policies so current and future land development will be adaptive and resilient to climate change impacts.



Strategy 1: **Increase investment in the infrastructure** (sewer, water, stormwater, sidewalks, bike lanes, EV charging, broadband, energy supply) needed to support communities that are more resilient to climate disruptions, equitable, resource efficient, and protects the adaptive capacity of natural resources.



Strategy 2: **Develop permanent private and public funding sources to flood-proof**, elevate and purchase commercial and residential properties, as well as conserve and restore ecosystem services upstream to protect our people, property, environment, and economy from flooding.



# Access to Housing

Pathway 5: Ensure that all people have access to safe, accessible, energy efficient, and affordable housing.



Strategy 1: Update state and local land-use governance, regulations, practices, and investments to **eliminate barriers to housing development**.



Strategy 2: Increase investments in the **preservation and development of both private-market and nonprofit-owned affordable housing**.



Strategy 3: **Increase access to fair and affordable housing** for Vermonters who are housing instable.

# Public Health Impacts

## Pathway 6: *Climate Change impacts on Public Health.*



Strategy 1: **Identify and communicate risks** to public health due to climate change exacerbated hazards.



Strategy 2: Emphasize the **importance of mental health services** for communities and individuals impacted.



Strategy 3: **Prepare municipalities to play a more active role** in communications and emergency health impacts preparedness.

# Cross-Cutting Pathways

## Workforce Development



Strategy 1: Further support where licensing occurs and review opportunities where it does not currently take place that would **enhance a climate workforce**

Support compact settlement patterns that contribute to the reduction of GHG emissions, enhance community and built environment resilience, and help conserve natural and working lands.



Strategy 1: **Increase investment in the infrastructure** (sewer, water, stormwater, transportation, mixed-use development, housing, sidewalks, bike lanes, EV charging, broadband, energy supply) **needed to support resilient, compact, walkable development.**



Strategy 2: **Update state and local land-use policies, regulations, and practices to remove barriers to compact settlement** and improve coordination on land use and development planning and implementation across agencies, departments, municipalities, boards, commissions, and authorities.



Strategy 3: **Fund research, data collection and digital maps** to provide insights on land use decisions in Vermont and the impact it can have on climate and resilience goals and outcomes.

**Building Codes:** Ensure that existing or potential codes or standards account for anticipated climate hazards.





# Group Discussion

- **Disaster preparedness and response:** What support do municipalities most need?
- **Long-term resilience:** Beyond immediate recovery, how can municipalities build resilience to climate change impacts? What do you/they have the capacity to do?
- **Engagement:** How might municipalities be better included in state, regional, and local resilience planning?
- **What is missing?** Has the subcommittee overlooked a key resilience issue?

# Next Steps

## Stay involved!

- Sign up for the [Climate Action Office's newsletter](#) (link in chat)
- Attend a subcommittee meeting or another input session: [climatechange.vermont.gov/calendar](https://climatechange.vermont.gov/calendar)
- Share your thoughts!
  - [Climate Action Plan public comment form](#) (link in chat)
  - Leave a voice message at 802-404-2729