



+



VERMONT

AGENCY OF TRANSPORTATION

Wilmington BF 010-1(58) Local Concerns Meeting

Structures Engineering Services

June 4, 2024

Project Location



Project Development Process

- Scoping & Conceptual Design – ***In Progress***
 - Site Visit - ***Complete***
 - Stakeholder and Community Engagement - ***Ongoing***
 - ❖ Regional and Local Concerns Meeting - ***Today***
 - Alternatives Evaluation
 - ❖ Alternative Presentation
 - Draft Scoping Report
- Preliminary Design
- Final Design
- Construction





Existing Bridge Conditions

- *The passage of the Deerfield is constricted; history of flooding at this location.*
- *Two 11-foot lanes, 4-foot shoulders, 5-foot sidewalks*
- *Intersections on each side of the bridge*
- *Congestion at Rt 9/Rt 100 intersection a notable concern*
- *Deteriorating concrete throughout, severe deterioration of the deck and tee beams*
- *Previous deck repairs*

Inspection Findings



Depression Cracking and Exposed Deck Surface



Probable Full-Depth Deck Hole in Bay 4 with Severe Concrete Spalling and Corroded Reinforcing

The Deck and Superstructure are in **poor condition**. The Substructure is in **fair condition**.

Finding from Inspection on 4/24/24: possible full depth hole in the deck, triggering a short-term repair.

Draft Purpose and Need Statement

⌞⌞ *The purpose of this project is to provide a safe crossing over the North Branch of the Deerfield River that meets current design standards and provides a 100+ year service life. **The project is needed** to address the structural deficiencies and deterioration of the existing bridge while improving resilience, hydraulic performance, and mobility through downtown Wilmington.* ⌞⌞



Design Alternatives

- No Action
- Bridge Rehabilitation
- New Bridge on New Alignment
- New Bridge on Existing Alignment



Key Considerations

- Impacts on local businesses
- Mobility
- Resilience and historic integration



Mobility

Maintaining Mobility is Key:

- This section of Route 9 serves around 10,000 vehicles every day, and **many are trucks**
- Need to maintain bike and pedestrian mobility
- Access to downtown businesses



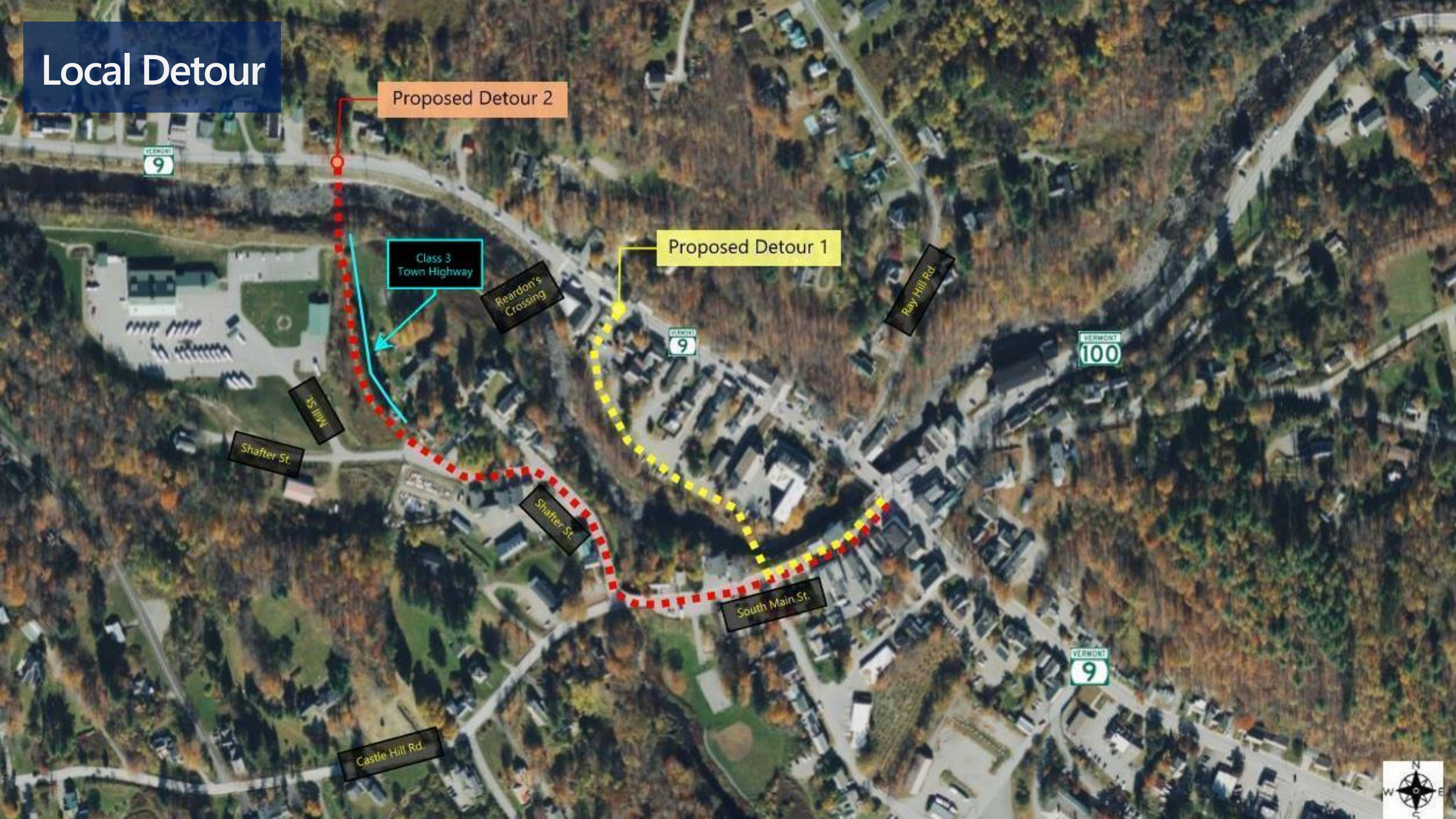
Traffic Control & Construction Options

Traffic Control Alternatives:

- Possible local/regional detours
- Phased bridge construction
- Accelerated bridge construction with closure(s)



Local Detour



Proposed Detour 2

Class 3
Town Highway

Proposed Detour 1

Shafter St.

Shafter St.

South Main St.

Castle Hill Rd.

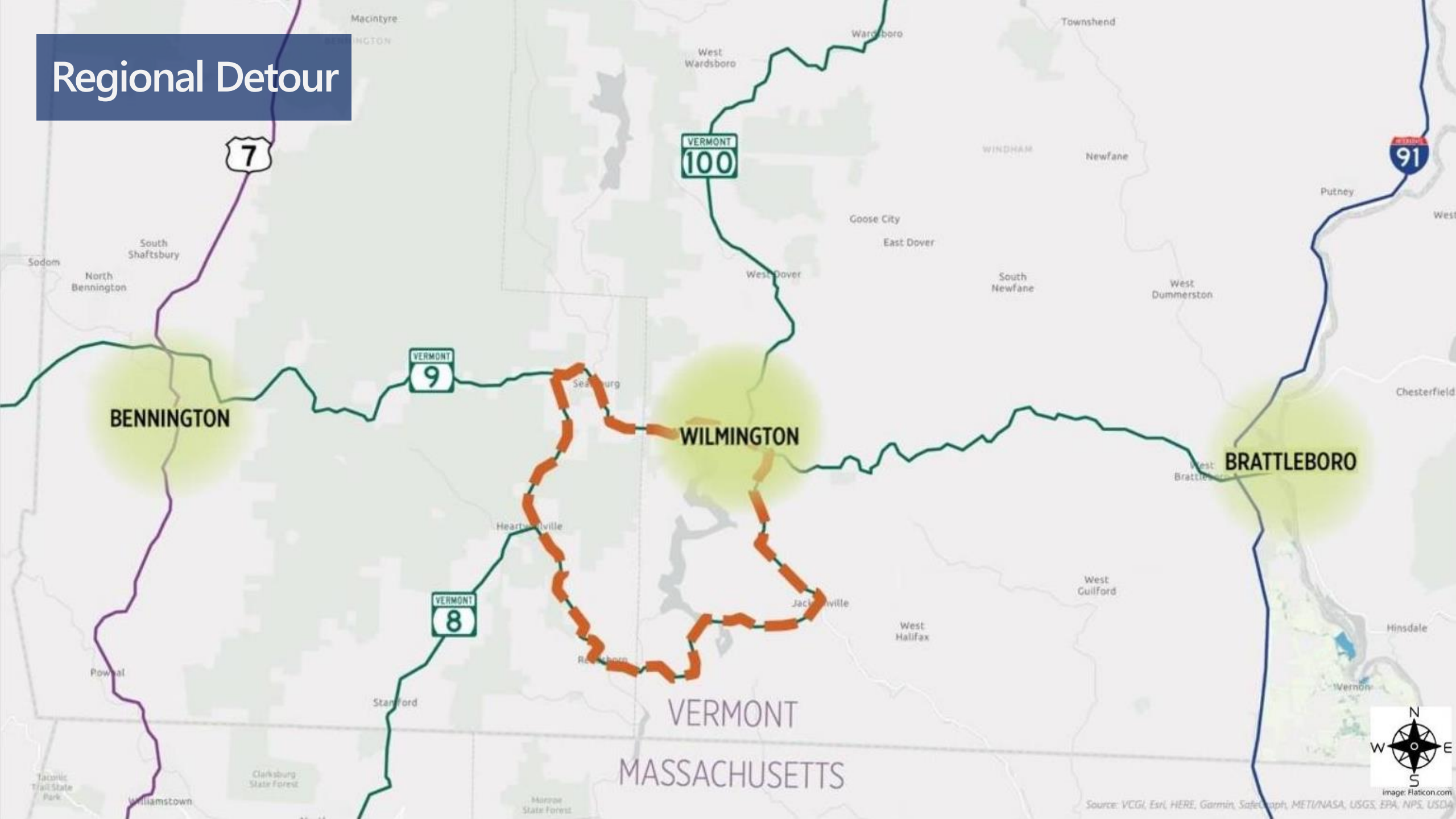
Reardon's
Crossing

Ray Hill Rd.

35 Mill St.



Regional Detour





Resilience and Historic Integration

- Bridge 31, built in 1934, is located within the Wilmington Village Historic District
- Eligible as part of the historic district
- Bridge 31 survived the 1938, 1976, and 2011 flooding.
- Rehabilitation/replacement will require mitigation of impact to historic resources

Other Considerations

- Utilities
- Right-of-Way
- Public Input





Next Steps

- Deck Repairs
- Evaluate Alternatives
- Alternatives Public Meeting
- Prepare Scoping Report

Schedule





Discussion



+



Thank you!



- www.vhb.com



- jlroy@vhb.com



- (802) 497-6117