

# LOCAL CONCERNS MEETING

KINGSLEY COVERED BRIDGE  
CLARENDON BO 1443(55)  
TH 39, BRIDGE NO. 28 OVER MILL RIVER

AUGUST 10, 2020



Vermont Agency of Transportation  
Clarendon BO 1443(55)

1



1

## PRESENTATION OUTLINE

- Purpose and Need
- Location Map
- Existing Bridge Information
- Inspection Findings
- Rehabilitation & Traffic Control Alternatives
- Cultural & Natural Resources
- Abutters & Right-of-Way
- Your Input is Needed
- Next Steps
- Anticipated Schedule
- Questions



Vermont Agency of Transportation  
Clarendon BO 1443(55)

2



2

## PURPOSE AND NEED

### Purpose

- Evaluate the Kingsley Covered Bridge for continued Special Use on Roads crossing the Mill River and to extend its service life

### Need

- Continue to provide access for vehicles across Mill River in the eastern part of the Town of Clarendon



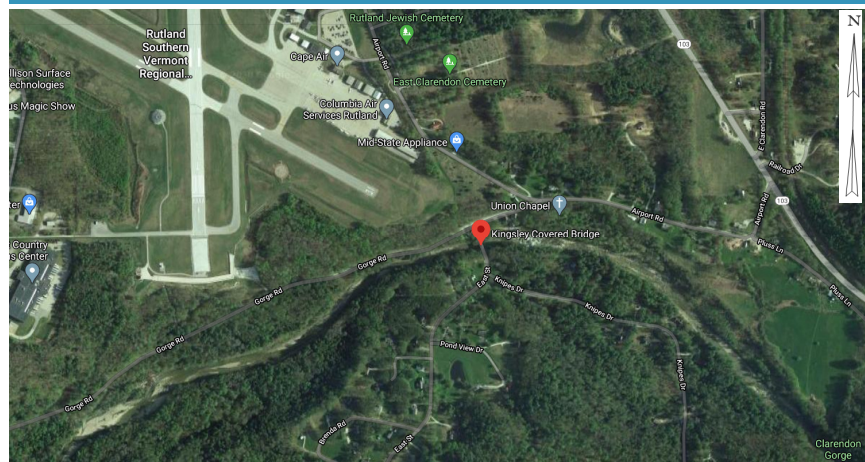
Vermont Agency of Transportation  
Clarendon BO 1443(55)

3

Hoyle, Tanner  
& Associates, Inc.

3

## LOCATION MAP



Vermont Agency of Transportation  
Clarendon BO 1443(55)

4

Hoyle, Tanner  
& Associates, Inc.

4

## EXISTING BRIDGE INFORMATION

- Bridge constructed in 1836, Rehabilitated in 1949 & 1987
- Listed in National Register of Historic Places in 1974
- Town Lattice Trusses:
  - 120' Long (Portal to Portal)
  - 15'-7" On Center
  - 11'-0" Vertical Clearance
  - Posted Weight 3 Tons
- Substructures: Reinforced Concrete Abutments Founded on Bedrock



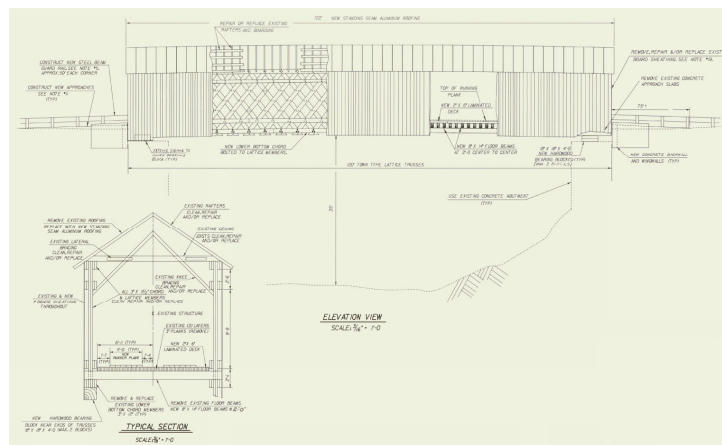
Vermont Agency of Transportation  
Clarendon BO 1443(55)

5

Hoyle, Tanner  
& Associates, Inc.

5

## SECTION AND ELEVATION VIEW



Vermont Agency of Transportation  
Clarendon BO 1443(55)

6

Hoyle, Tanner  
& Associates, Inc.

6

## INSPECTION FINDINGS

- National Bridge Inspection Standard Condition Ratings
  - 9 = Excellent
  - 0 = Failed Condition - Closed
- Overall bridge condition is rated 5 or fair.
  - Deck condition is rated 7 or good.
  - Superstructure condition is rated 5 or fair.
  - Substructure condition is rated 7 or good.
  - Channel condition is rated 8 or very good.



Vermont Agency of Transportation  
Clarendon BO 1443(55)

7



7

## METAL ROOF

Paint Blistering,  
Fading, Ridge  
Cap Attached  
with Nails &  
Screws, Trees  
Overgrown



Vermont Agency of Transportation  
Clarendon BO 1443(55)

8



8

## ROOF MEMBERS

Splits, Breaks,  
Rot,  
Overcuts,  
Insect  
Damage



Vermont Agency of Transportation  
Clarendon BO 1443(55)

9

Hoyle, Tanner  
& Associates, Inc.

9

## BRACING MEMBERS

Guy wires  
not well  
anchored



Vermont Agency of Transportation  
Clarendon BO 1443(55)

10

Hoyle, Tanner  
& Associates, Inc.

10



## LATTICE MEMBERS

Large Gaps at  
Previous  
Splices, Splits,  
Breaks, Rot,  
Insect  
Damage



Vermont Agency of Transportation  
Clarendon BO 1443(55)

11

Hoyle, Tanner  
& Associates, Inc.

11

## TOP CHORD MEMBERS

Out of Plumb,  
Splits, Breaks,  
Rot, Insect  
Damage



Vermont Agency of Transportation  
Clarendon BO 1443(55)

12

Hoyle, Tanner  
& Associates, Inc.

12

## BOTTOM CHORD MEMBERS

Bedding  
Timbers  
Rotted,  
Settling of  
Trusses,  
Rusting of  
Bolts



Vermont Agency of Transportation  
Clarendon BO 1443(55)

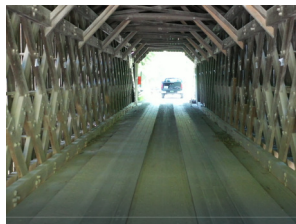
13



13

## FLOOR MEMBERS

Runners Trap  
Debris,  
Ramps Each  
End



Vermont Agency of Transportation  
Clarendon BO 1443(55)

14



14

## SUBSTRUCTURE

Concrete  
Cracks,  
Spalling,  
Delamination



Vermont Agency of Transportation  
Clarendon BO 1443(55)

15



15

## REHABILITATION ALTERNATIVES ANALYSIS

- Bridge rehabilitation is feasible based on:
  - Current condition of bridge.
  - Deterioration type and level of section losses observed.
  - Expected remaining service life.
- Rehabilitation will extend service life.



Vermont Agency of Transportation  
Clarendon BO 1443(55)

16



16



## REHABILITATION ALTERNATIVES ANALYSIS

- Bridge rehabilitation alternatives analysis will consider and evaluate:
  - H-3 (3-Ton) Design Vehicle
  - H-12 (12-Ton) Design Vehicle
  - H-15 (15-Ton) Design Vehicle
  - H-20 (20-Ton) Design Vehicle



Vermont Agency of Transportation  
Clarendon BO 1443(55)

17



17

## REHABILITATION ALTERNATIVES ANALYSIS

- Rehabilitation alternatives evaluation will include:
  - Initial construction cost.
  - Traffic impact.
  - Public safety.
  - Environmental impacts.
  - Property impacts.
  - Extending remaining service life.
  - Public input.



Vermont Agency of Transportation  
Clarendon BO 1443(55)

18



18

## TRAFFIC CONTROL ALTERNATIVES

- Phased construction.
  - One lane of alternating two-way traffic (Not Feasible)
- Temporary bridge (Not Feasible)
- Bridge closure with off-site detour:
  - East St to Gorge Rd, VT Route 7B, Bump Rd, back to East St (3.8 miles)



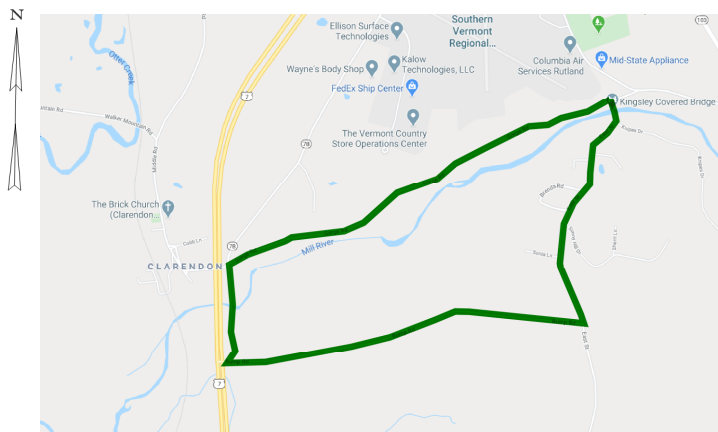
Vermont Agency of Transportation  
Clarendon BO 1443(55)

19

Hoyle, Tanner  
& Associates, Inc.

19

## POTENTIAL DETOUR ROUTE



Vermont Agency of Transportation  
Clarendon BO 1443(55)

20

Hoyle, Tanner  
& Associates, Inc.

20

## CULTURAL RESOURCES

- Project must follow Section 106 of the National Historic Preservation Act
- Section 106 requires consideration of cultural resources, including historic buildings, structures & archaeological deposits
- Coordinate with State Historic Preservation Office (SHPO) and Historic Covered Bridge Preservation Committee (HCBPC)



Vermont Agency of Transportation  
Clarendon BO 1443(55)

21

Hoyle, Tanner  
& Associates, Inc.

21

## NATURAL RESOURCES ABUTTERS & RIGHT-OF-WAY

- Natural Resources
  - Check project limits for natural resources.
- Abutters & Right-of-Way
  - We currently do not anticipate any property rights needed
    - Temporary easements for construction access may be required



Vermont Agency of Transportation  
Clarendon BO 1443(55)

22

Hoyle, Tanner  
& Associates, Inc.

22

## YOUR INPUT IS NEEDED

- Abutter concerns
- Emergency response routes
- Bridge usage
- Local events and impacts
- Bridge safety concerns
- Other concerns



Vermont Agency of Transportation  
Clarendon BO 1443(55)

23



23

## NEXT STEPS

- Evaluate rehabilitation alternatives
- HCBPC presentation to get input & comments
- Hold Public Information Meeting to present recommended rehabilitation alternative
- Complete National Environmental Policy Act (NEPA) Process for environmental permitting
- Prepare Scoping Report
- Develop contract plan & documents



Vermont Agency of Transportation  
Clarendon BO 1443(55)

24



24

## ANTICIPATED SCHEDULE

Scoping  
Report  
Fall 2020

Contract  
Plans  
Fall 2022

Advertise  
January  
2023

Construction  
Begins  
Summer 2023



Vermont Agency of Transportation  
Clarendon BO 1443(55)

25



25

## QUESTIONS



Vermont Agency of Transportation  
Clarendon BO 1443(55)

26



26