



VT Route 110 – Bridge #21 over Jail Branch
Public Information Meeting - Questions and Comments
April 27, 2021

Meeting With You Today



Mahendra Thilliyar, P.E.

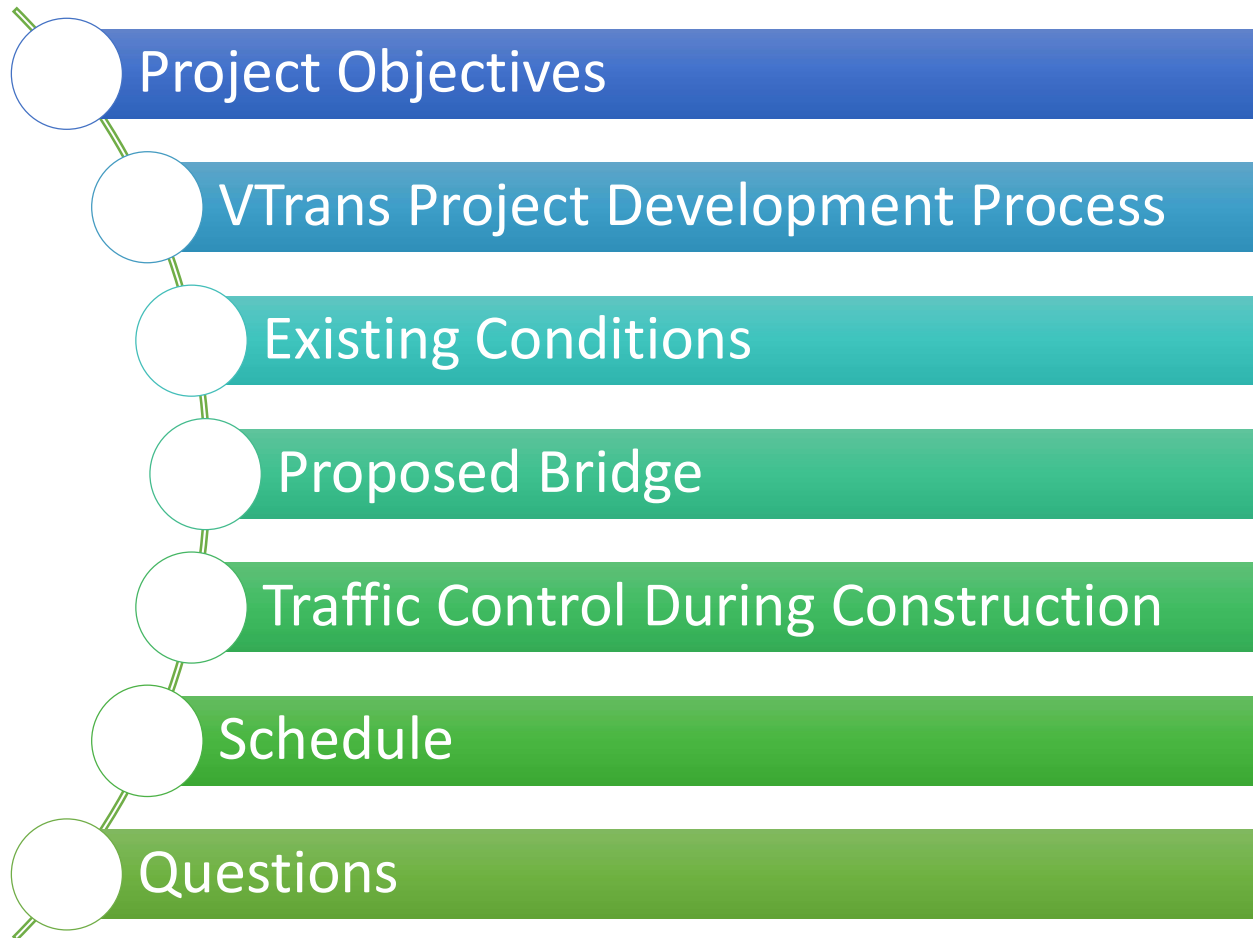
Project Manager - VTrans



David Kull, P.E.

Design Consultant – McFarland Johnson (MJ)

Purpose of Tonight's Meeting?



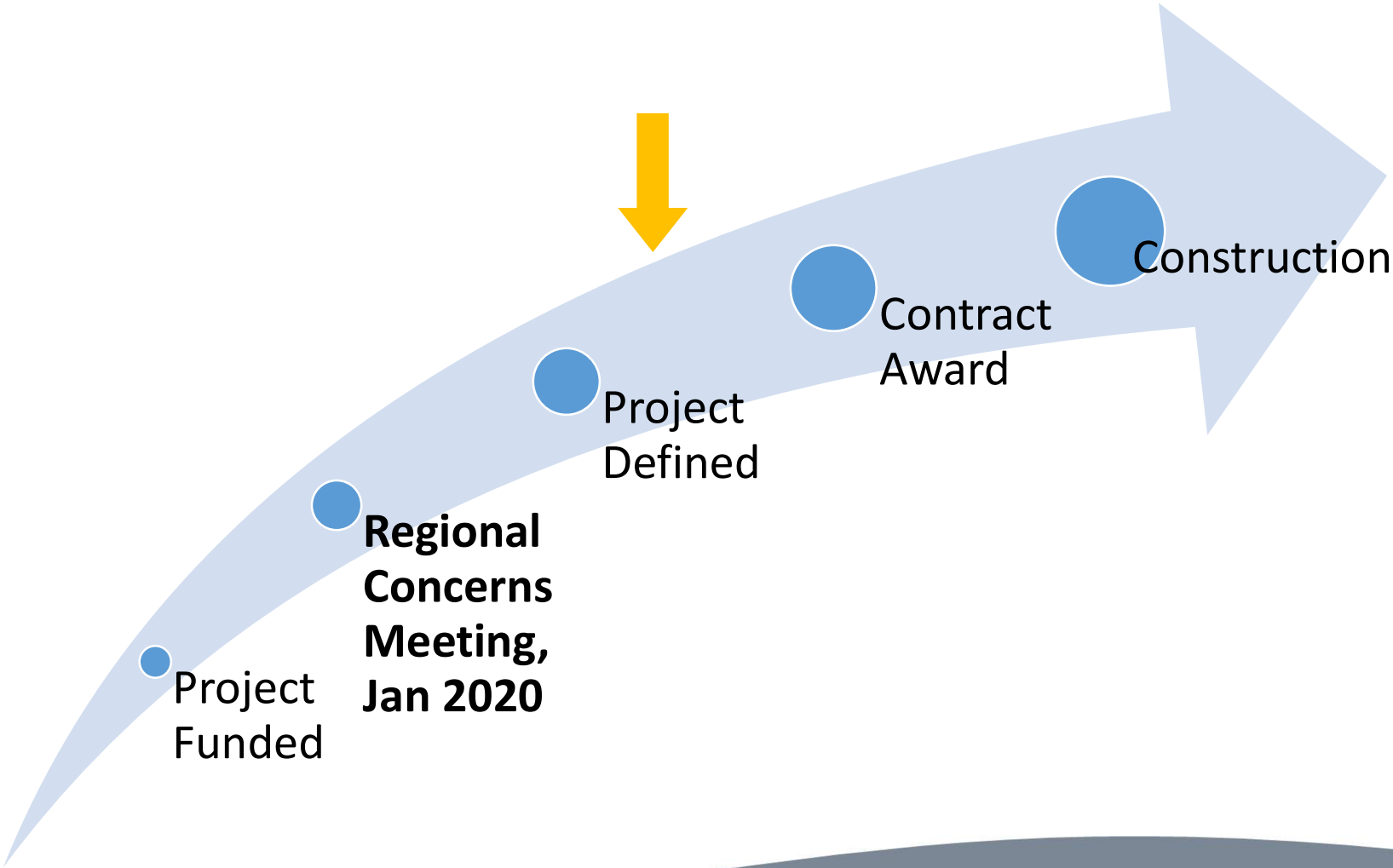
Project Location



Project Objectives?

- ✓ Coordinate Replacement of the Bridge
- ✓ Minimization of Disruptions to the Public
- ✓ Minimize Impacts to:
 - Right-of-way (ROW)
 - Environmental Resources
 - Historic And Archaeological Resources
 - Utilities

VTrans Development Process



Existing Condition – Why Are We Here?



- Deck Rating 5 (Fair)
- Superstructure Rating 5 (Fair)
- Substructure Rating 6 (Satisfactory)

Existing Condition – Environmental


Contaminated Soils Identification

- Low-Moderate Levels of Petroleum Contamination
- Typical for Sites Similar to This Project



SOIL AND GROUNDWATER MANAGEMENT PLAN
VERMONT AGENCY OF TRANSPORTATION
VT Route 110, Bridge No. 21 over Jail Branch Brook
Barre Town BF0169(12)
Barre, Vermont

March 2021
File No. 04.0191154.03



PREPARED FOR:
Vermont Agency of Transportation
Berlin, Vermont

GZA GeoEnvironmental, Inc.
5 Commerce Park North, Suite 201 | Bedford, NH 03110-6984
603-623-3600

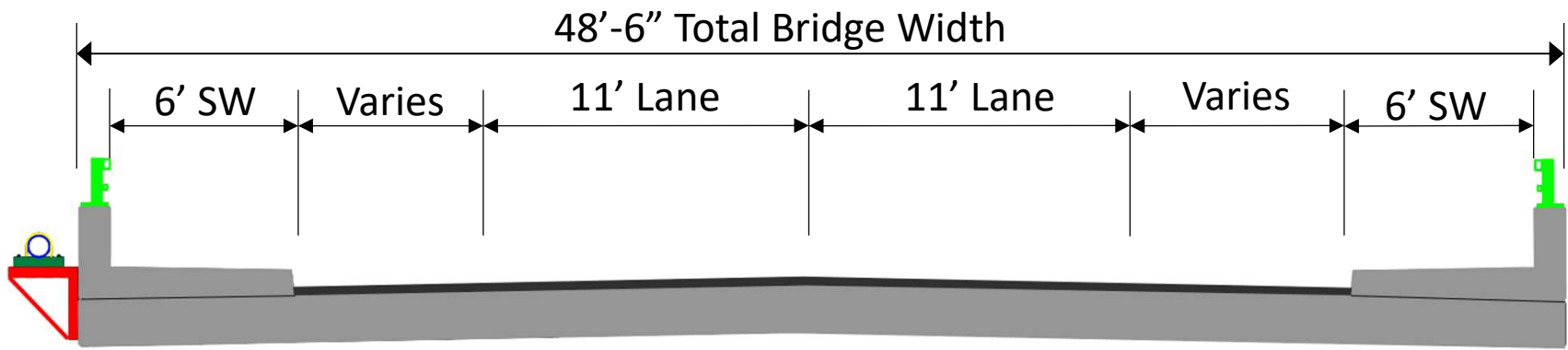
Offices Nationwide
www.gza.com

Copyright© 2021 GZA GeoEnvironmental, Inc.

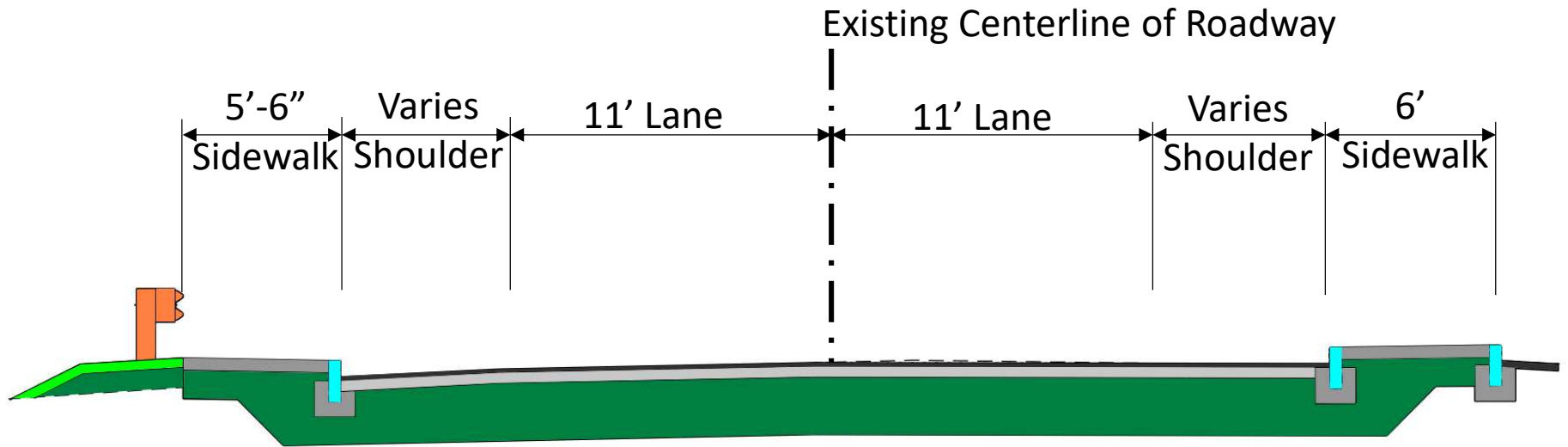
Proposed Bridge

- Full Bridge Replacement Design Criteria & Goals:
 - Widen To Match The Corridor and Adjacent Intersections
 - 11-foot Lane Width and Variable Shoulder Widths
 - Sidewalks Provided on *BOTH* sides of Bridge
 - Utility Accommodation on Bridge – Accommodation for Proposed Water Line
 - 75+ Year Design Life
 - Minimize Right-Of-Way Impacts
 - No Utility Relocation
 - Minimize Environmental Impacts

Proposed Bridge



Proposed Roadway



Proposed Bridge Summary



	<u>Proposed</u>	<u>Existing</u>
• Bridge Width	48'-6"	46'-0"
• Span Length	45'-0"	41'-0"
• Utility Accommodation:	Yes	No

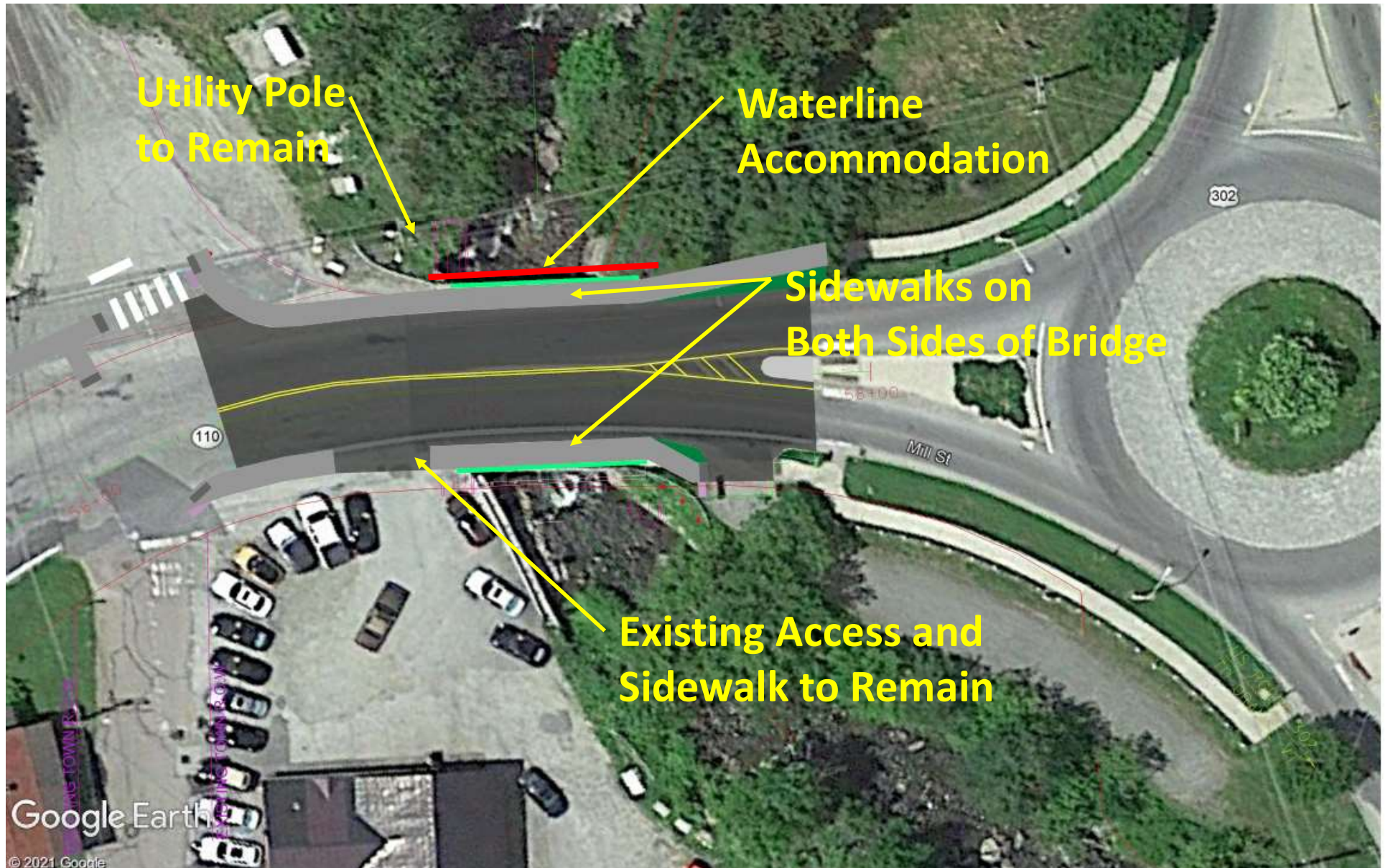
06/19/2015

Proposed Bridge Summary

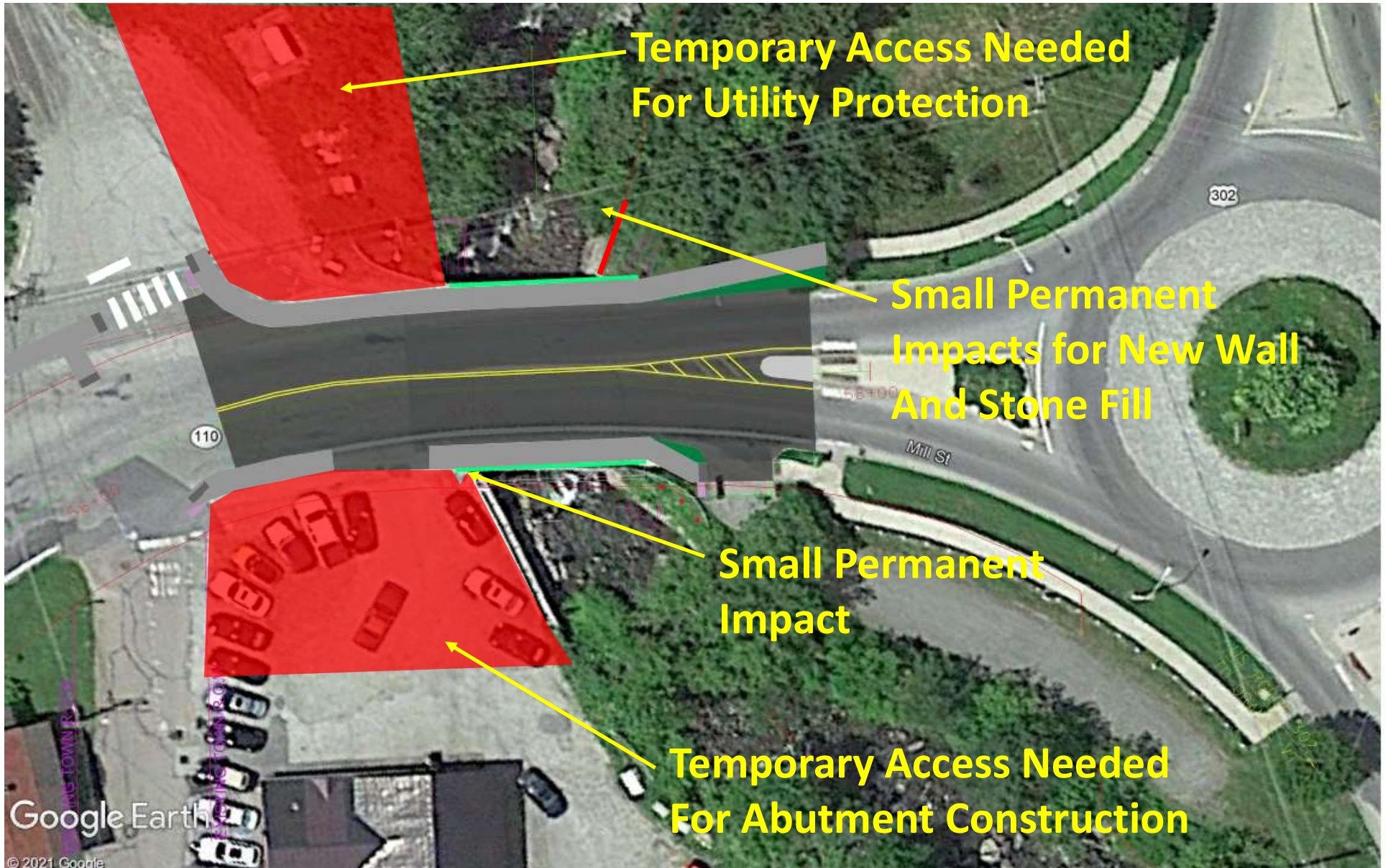
Accelerated Bridge Construction



Project Impacts – Final Condition



Project Impacts - Construction



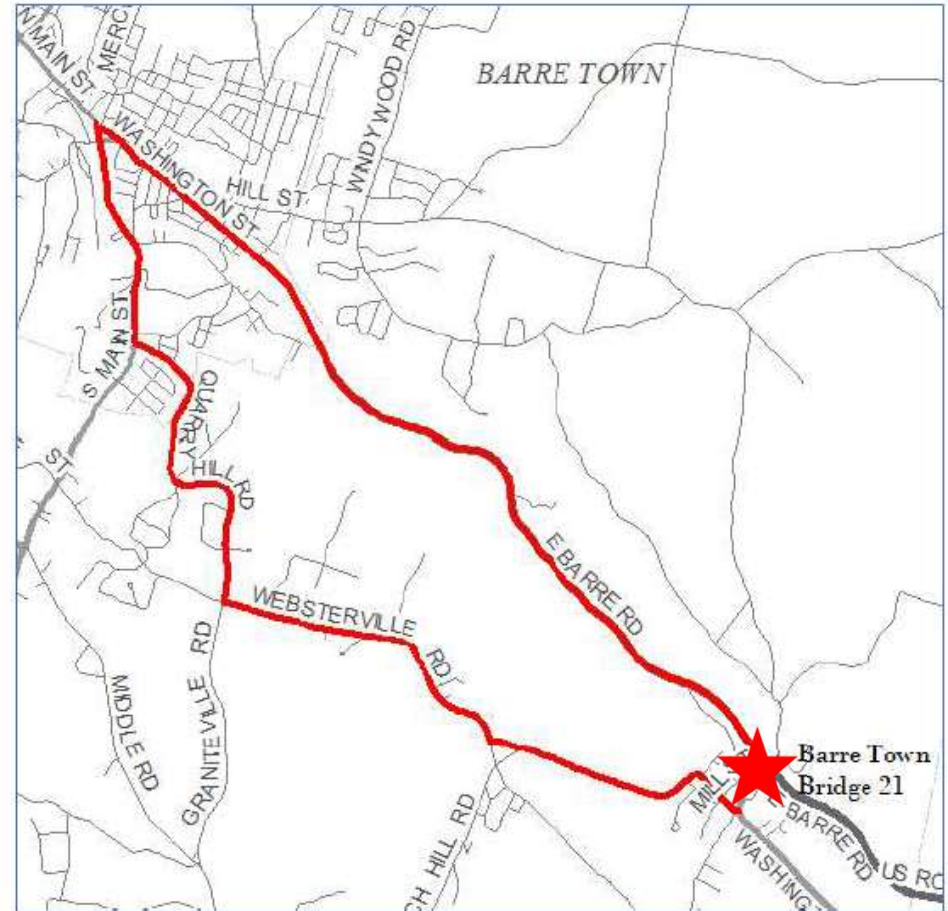
Traffic Control Summary

- Full Bridge Closure:
 - Offsite Traffic Detour Required
- How Long Will Bridge be Closed?
 - Approximately 60 days
 - Monetary Incentives and Disincentives Included in Project
- Access to Driveways Maintained?
 - Access to Properties Required During All Phases of Construction

Traffic Control Summary

Offsite Signed Detour

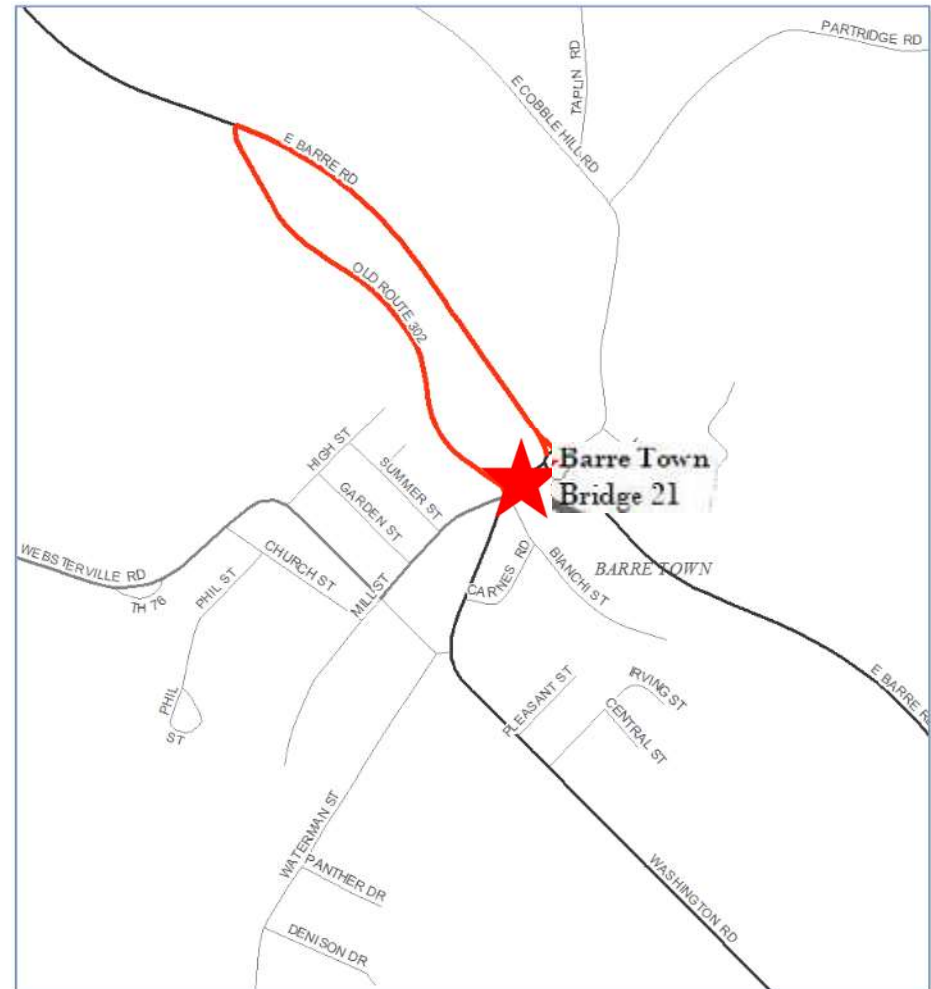
- The Regional Detour Route, Has An End-to-end Distance Of 6.1 Miles



Traffic Control Summary

Local & Pedestrian Bypass

- The Shortest Local Bypass has Distance Of 1.1 Miles
- Local Bypass to be Unsigned



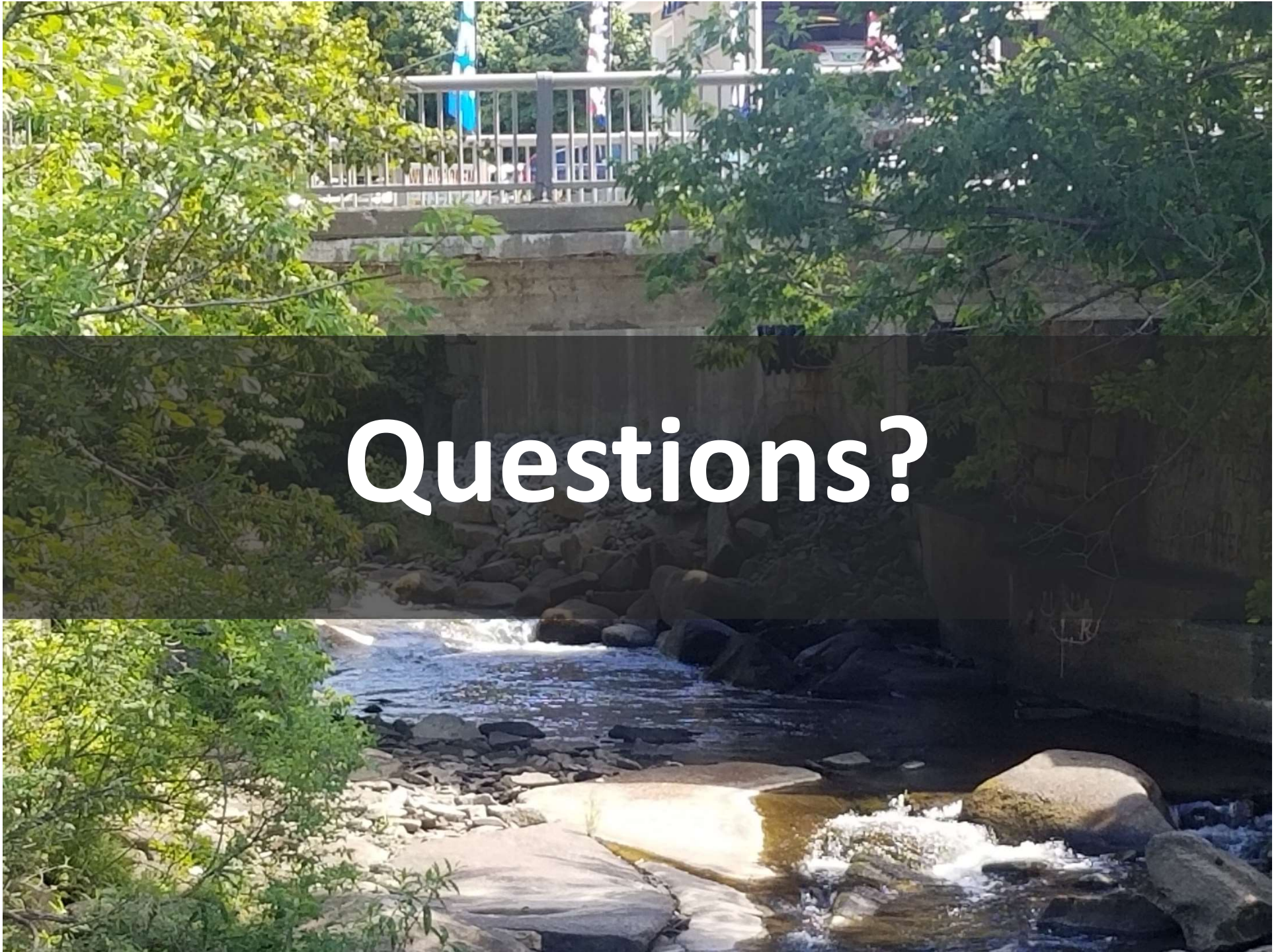


Project Schedule

- Upcoming Major Project Milestones:
 - Project Advertised: Fall 2023
 - Construction: Spring of 2024
 - Project Completion: Fall of 2024

Bridge Closure Schedule

- Bridge Closure – How Much Notice:
 - Contract Requires Bridge Closure in Summer Outside of School Year
 - Contractor to Determine When Closure Will Occur
 - 14 Day Advance Notice Required Prior to Bridge Closure
 - Monetary Incentive to Complete Closure on Time or Ahead of Schedule
 - Signing & Message Boards to Be Placed Notifying Public of Closure



Questions?