



**Donald L. Hamlin
Consulting Engineers**

136 Pearl Street
Essex Junction, Vermont 05452
Tel (802) 878-3956
HamlinEngineers@dlhce.com
www.dlhce.com

**Statement of Qualifications
At-the-Ready (ATR) Consultant Engineering Services for Municipalities 2026
MUNICIPAL PROJECT MANAGEMENT**



*~ Engineering Excellence ~
Since 1965*

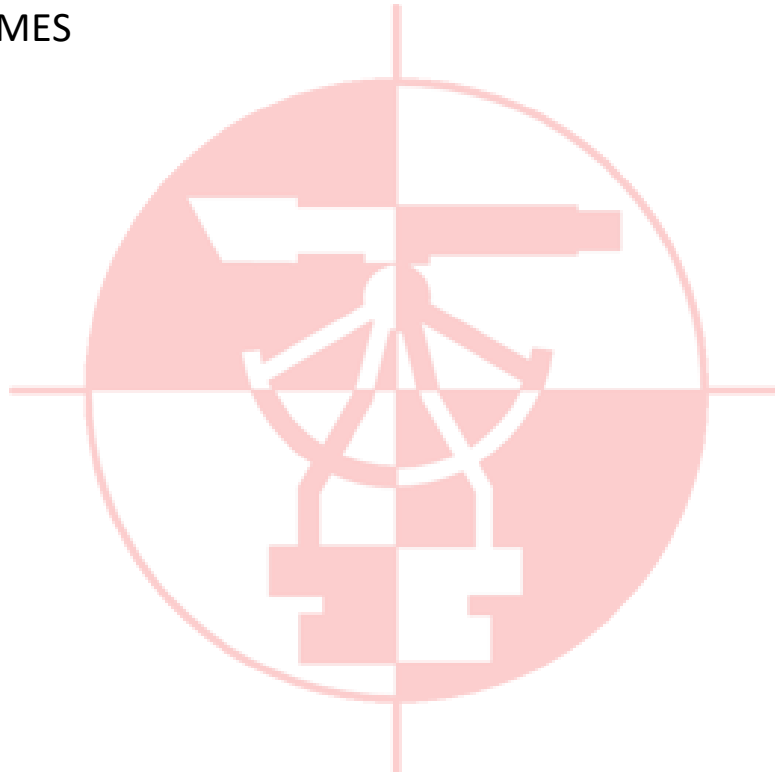


**State of Vermont
Agency of
Transportation
Municipal Assistance
Section**

March 2, 2026

TABLE OF CONTENTS

- a. COVER LETTER
- b. GENERAL FIRM INFORMATION
- c. ORGANIZATIONAL CHART and AVAILABILITY
- d. TECHNICAL CAPABILITIES
- e. RESUMES



a. COVER LETTER



DONALD L. HAMLIN
CONSULTING ENGINEERS, INC.
ENGINEERS AND LAND SURVEYORS

Please reply to:

P.O. Box 9
Essex Junction
Vermont 05453

136 Pearl Street
Essex Junction, Vermont

Tel. (802) 878-3956
Fax (802) 878-2679
www.dlhce.com

March 2, 2026

Ms. Nydia Lugo
Vermont Agency of Transportation, Highway Division
Project Development Bureau – Municipal Assistance
219 North Main Street
Barre, VT 05641

Re: At-The-Ready Consultant Engineering Services for Municipalities 2026
Municipal Project Management

Dear Ms. Lugo:

Thank you for considering our firm for future Municipal Project Management services. We welcome this opportunity to continue providing service to the Agency of Transportation and Vermont communities. As a long-term working member of Vermont's municipal transportation partners, we understand the challenges facing the transportation system in Vermont. Our firm's decades of expertise and experience in construction scheduling, coordination, administration, and supervision provide us with the ability to recognize and stay ahead of potential issues which may arise during the course of a project. Our firm's depth of experience providing services on VTrans administered projects and our knowledge of local, State and Federal requirements and VTrans Standard Specifications for Construction allow us to continually ensure that projects are completed on schedule and in accordance with approved plans and specifications.

We utilize a team approach throughout our projects. We know that providing complete Municipal Project Management services over projected scoping, engineering design, and construction phases of the project will require a primary project manager and associated back-up staff. Our team has worked together for 38 years on projects too numerous to list and brings over 150 years of combined experience to any project. Our firm recently provided or is currently providing engineering design, project management, and/or resident engineering for the following VTrans Municipal Assistance administered projects:

Huntington STP BP24(13)
Hinesburg TAP TA22(7)
Enosburg Falls STP BP16(7)
Jericho STP BP21(13)
Cambridge ER P20-1
Essex Junction STP 5300(13)
Essex Junction TAP TA 16(7)
Fairfield STP BP13(7)
Colchester STP 5600(21)
Essex Junction STP SDWK (17)

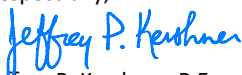
South Burlington STP 5200(18)
Shelburne STP BP14(5)
Vergennes STP BP15(6)
Essex Junction STP 5300(9) &(10)
Hinesburg STP Bike(54)
Essex Junction STP SDWK(14)
Jericho STP BP14(2)
Colchester TCSP TCSE(007)
Colchester STP SDWK(20)
Shelburne STP SDWK(24)

Fairfax STP EH12(8)
Essex Junction STP 5300(11)
Jericho STP BP14(2)
Essex Junction STP 5300(14)
Jericho STP SDWK(2)
Colchester STP SDWK(16)
Milton STP BP16(10)
Milton STP BP13(3)

The attached response to the Request for Qualifications presents general information about our firm, detailed qualifications of the key personnel, and brief examples of projects involving Municipal Project Management services. We have uploaded our electronic submission to our VTrans FTP Account as requested in the Request for Qualifications.

Once again, thank you for considering our firm and we appreciate the opportunity to continue working with the Vermont Agency of Transportation and Vermont local communities.

Respectfully,



Jeffrey P. Kershner, P.E.
President

Enc.

WATER SUPPLY & DISTRIBUTION
STORMWATER MANAGEMENT
STREETS & HIGHWAYS
CONTRACTOR SERVICES

MUNICIPAL ASSISTANCE
SITE DEVELOPMENT & SUBDIVISION
RECREATION FACILITIES & SKI AREAS
WASTEWATER COLLECTION & TREATMENT

AGRICULTURAL ENGINEERING
PERMITTING ASSISTANCE
LAND SURVEYING
RESIDENT ENGINEERING

b. GENERAL FIRM INFORMATION



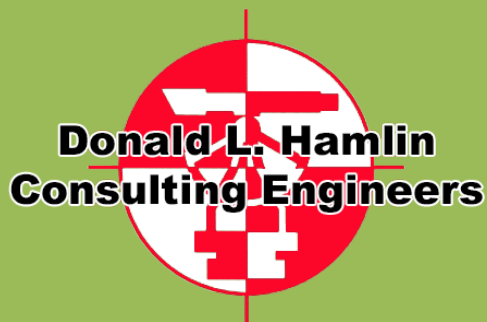
GENERAL FIRM INFORMATION

Donald L. Hamlin Consulting Engineers, Inc. (DLHCE) is a Vermont firm, founded in 1965, offering a full range of civil engineering, land surveying, and project management services. Personnel with broad experience in all phases of civil engineering, planning, and project management form the core of this organization. Comprehensive service to our clients is a primary goal of the firm. Emphasis is placed on establishing and maintaining good working relationships with clients, contractors, representatives of local, State, and Federal governments, and people affected by construction projects.



Since its inception, the culture of the firm has been based upon complete engineering solutions and service, from survey, design and permitting, through final construction of the project. Because we are able to provide complete survey, permitting, and engineering services, we are experienced in all phases of project development, completion, and management. We also recognize that it takes more than providing proper technical solutions for a project to be completed successfully. Realization of project goals, and the assurance that what the client and regulatory agencies have approved is constructed, requires engineering support throughout the construction process. The engineering career of the firm's founder began as a Resident Engineer on several interstate highway projects. This heritage of engineering care and complete service until the completion of construction remains with the firm. **We understand that the difference between a good project and great project is always found in the details, and we have the experience to know where to look for those details.**

Our office is located at 136 Pearl Street in Essex Junction. This office of currently seven employees is fully equipped and capable of producing all original engineering documents or reproductions in many formats. For more information regarding our firm, please visit our website: www.dlhce.com



136 Pearl Street
Essex Junction, Vermont 05452
802-878-3956
hamlinengineers@dlhce.com
www.dlhce.com

~ Engineering Excellence Since 1965 ~

Resident Engineering
Municipal Project Management
Drainage & Stormwater Facilities
Traffic Engineering, Modeling, & Impact Studies
Streets, Highways, & Intersections
Municipal Asset Management
Erosion Prevention and Sediment Control
Subdivisions-Residential & Commercial
Recreation and Industrial Planning
Engineering Feasibility Studies
Permit Assistance
Land Surveying & Mapping
Construction Inspection & Management
Bicycle/Pedestrian Planning and Design
Public Works and Maintenance Facilities
UAS Aerial Survey and Mapping



TESTIMONIALS

"Tatro Construction, Inc. has worked with Hamlin Consulting Engineers on numerous projects over the years. I have personally known Rick for approximately 20 years. We have found their designs are based on sound engineering principles. Their plans and specifications are easy to understand. That being said, Rick and his staff always have an eye on constructability! This directly correlates to smoother construction phase. I wholeheartedly recommend Rick and his staff. They put the "professional" in Professional Engineers."

**- Marshall Leonard, P.E., former General Manager
G.W. Tatro Construction, Inc.**

"Wow! What a neat project that we can both drive by each day and be proud of. A win-win for the Champlain Valley Exposition and the Village of Essex Junction. Congratulations to you and your firm for pulling all the pieces together."

**- David Grimm, CFE
Former General Manager of the Champlain Valley Exposition**

"I have also seen Zack and Jeff go above and beyond."

**- Eric Boozan
Town Administrator/Highway Manager
Town of Cambridge**

"Hi Jeff, Thank you so much for your work, professionalism and oversight on both path resurfacing projects. Without hesitation Glen and I both feel the final product from you and Donald L. Hamlin mirrored what was proposed within your Engineering Services Proposals. We are very pleased with the results! I appreciated your knowledge and guidance throughout this project and enjoyed working with you. Town Administration, Select Board Members, Parks Staff and community members have been very pleased with the paths!"

**- Derek Mitchell, CPRP
Assistant Director Colchester Parks & Recreation Department**

"I also wanted to let you know that a resident on Route 15 came in this morning to complement the "engineers" on the project. She said your team was very professional and she thought it was very kind that they knocked on her door to check in every day. She mentioned she had offered muffins and lemonade to the crews and that while she was initially opposed to the project, that it turned out excellent and she now sees the value. We don't get a lot of positive feedback so I wanted to share."

- Linda Blasch, Assistant Town Administrator, Town of Jericho



c. ORGANIZATIONAL CHART and AVAILABILITY



Organizational and Availability Chart



JEFFREY P. KERSHNER, P.E.
PRESIDENT
PRINCIPAL ENGINEER and PROJECT MANAGER
Responsible for corporate administration and oversees employee performance and conduct. Responsible for final quality of work and company policy. Responsible for quality assurance and quality control.
Availability: 25%



RICHARD F. HAMLIN, P.E.
CHIEF OF ENGINEERING
MUNICIPAL PROJECT MANAGER
Responsible for project management and coordination for all aspects of project development, permits, utilities, right of way, and construction. Will serve as the single point of contact for selected projects. Procurement of Design Engineer, Resident Engineer, and Contractor. Financial management of the project. Ensure project is administered in accordance with the funding requirements. Advertise and lead public interest meetings and local municipality presentations.
Availability: 75%

MARK L. DOWNING, CPESC
VICE PRESIDENT
ENGINEERING TECHNICIAN
Construction Inspection, EPSC Compliance, Testing Observation, Field Studies, Survey Assistance
Availability: 75%



ZACHARY P. KERSHNER, E.I.
PROJECT ENGINEER
Project Designer, Resident Engineer, Construction Inspector, Construction Services, Project Closeout
Availability: 75%

RYAN A. WARD, L.S.
SURVEYOR
Responsible for Field Survey, Geodetic Control, and Construction Layout Services
Availability: 75%

REED L. ABRY, E.I.
PROJECT ENGINEER
Project Designer, Resident Engineer, Construction Inspector, Construction Services
Availability: 75%

COLIN BECKETT
PROJECT ENGINEER
Project Design and Drafting, Permitting Assistance, Field Studies, Construction Services
~ Coming June 2026 ~
Upon graduation from Drexel University
Availability: 75%

RENEE L. KERSHNER
OFFICE MANAGER
Responsible for everything else!



d. TECHNICAL CAPABILITIES



KEY PERSONNEL – MUNICIPAL PROJECT MANAGERS

Richard F. Hamlin, P.E., the firm's Chief of Engineering, will serve as the Municipal Project Manager and single point of contact for the duration of selected projects. We believe that having a single contact will aid in the resolution of any issues and facilitate coordination with the Municipality, utility companies, VTrans representative, project designer, resident engineer, and the adjacent property owners. All correspondence will go through Richard, who will be responsible for the project coordination from start to finish. Richard will be responsible for project financial management, consultant and contractor procurement, public presentations, and orchestration of the project through the VTrans project development process. Richard will be responsible for the overall quality of the work produced in support of the Municipal Project Management efforts, as well as the supervision of technical staff.



FAA licensed
Drone Pilot

44 Years
With Firm

Richard has provided design engineering, scoping study assistance, municipal project management, and resident engineering services on a number of projects administered with state and federal funding for over 40 years. Richard is a 1979 graduate of Norwich University who started his engineering career as an inspector on several waterline projects as an intern in college. After working for the Corps of Engineers in northern Europe, he returned to Vermont to serve as a Resident Engineer, supervising 8 other inspectors on a two year long municipal sewer project that brought municipal wastewater collection to the Town of Essex that included work within state highways and deep construction adjacent to live streams. Throughout his career, Richard has gained extensive experience providing conceptual planning, engineering design, and permitting services to a number of municipalities in Vermont and has designed roadway, waterline, and drainage improvements in the U.S. Virgin Islands. Richard has designed a variety of projects including an innovative sewer system to serve restaurants located on top of the highest mountain in Vermont, the 78-acre mixed commercial, retail, and residential Maple Tree Place development, and numerous roadway designs which include both water distribution systems and wastewater collection systems.

Richard has provided engineering services as the Village/City Engineer for the Village/City of Essex Junction throughout the last 30 years. During this time, Richard has provided complete engineering design, project management, asset management, capital budget planning, utility map preparation, emergency flooding assistance, and construction phase services on a continuous on-call basis.

Richard is a registered Professional Engineer licensed in Vermont, New Hampshire, and Maine. He is also an FAA licensed drone pilot with numerous successful UAS flight missions.

- ✓ **Richard has been providing engineering services to municipalities for over 40 years.**
- ✓ **Richard has served as the Village/City Engineer for Essex Junction since 1996.**
- ✓ **Municipal Project Manager for the Essex Junction Crescent Connector Project STP 5300(13) & (14); a \$16 million Transportation and Railway infrastructure improvement project.**
- ✓ **Currently providing Municipal Project Management Services to the Town of Huntington for the Lower Village Pedestrian and Road Safety Project, Huntington STP BP24(13).**



Jeffrey P. Kershner, P.E., the firm's President and Principal Engineer, will be available to serve as Municipal Project Manager for selected projects as needed. Jeffrey will be responsible for overall quality assurance and quality control and will oversee employee performance and conduct. Jeffrey will be the single point of contact for the duration of selected projects. We believe that having a single contact will aid in the resolution of any issues and facilitate coordination with the Municipality, utility companies, VTrans representative, project designer, resident engineer, and the adjacent property owners. All project correspondence will go through Jeffrey, who will be responsible for the project coordination from start to finish. He will be responsible for project financial management, consultant and contractor procurement, public presentations, and orchestration of the project through the VTrans project development process. Jeffrey will be responsible for the overall quality of the work produced in support of the Municipal Project Management efforts, as well as the supervision of technical staff.



During his studies at the University of Vermont, Jeffrey worked at the firm as an engineering intern until graduating cum laude in 1993 with a Bachelor of Science degree in Civil Engineering. Jeffrey is currently the firm's President and Project Manager for traffic, site development, roadway and utility construction, and stormwater drainage projects. He has performed engineering design and permitting assistance for numerous roadway, water, sewer, drainage, and erosion prevention and sediment control projects. He has utilized innovative surface treatments such as recycled bituminous concrete and pervious cement concrete pavement on his projects involving roads and/or paths. He has performed inspection work for numerous projects and attended numerous courses in traffic and transportation engineering, include the Econolite, "Fundamentals of Traffic Control" offered by Econolite Control Products, Inc. He was the Project Manager for four site development projects involving the issuance of four Individual Construction Discharge Permits in the Potash Brook watershed in South Burlington in accordance with the National Pollution Discharge Elimination System. He served as the Environmental Specialist required by those permits and was responsible for regular inspections, documentation, and reporting to the State Agency of Natural Resources. Jeffrey has provided engineering services as the Village/City Engineer for the Village/City of Essex Junction throughout the last 30 years.

During his career, Jeffrey has been involved in project scoping, project management, engineering design, permit acquisition, and construction supervision of numerous roadway and pedestrian facility projects, as well as sewer, water, and drainage utility construction and replacement projects too numerous to list. He is intimately familiar with local, State, and Federal requirements, as well as VTrans specifications and project development process. Jeffrey prides himself on maintaining positive working relationships with municipal and private clients and regulatory agencies; and providing solid technical service and solutions to all of his engineering projects.

Jeffrey is a registered Professional Engineer licensed in Vermont, New Hampshire, and Maine. He is also an FAA licensed drone pilot; and has completed numerous aerial survey and mapping missions providing both 2-D imagery and 3-D reconstructions.

- ✓ **Having served several municipalities from multiple vantage points, our team knows first-hand how to avoid common frustrations, which increase project longevity and cost.**
- ✓ **A close working relationship with regulatory staff at agencies such as Army Corps of Engineers, Vermont ANR, and VTrans.**
- ✓ **A project approach that includes a simplistic and continuous path of communication which enables the municipality to reach informed, fact-based decisions to move the project forward.**



QUALIFICATIONS AND EXPERIENCE – RECENT PROJECT EXAMPLES

Within the last five years, we have performed Municipal Project Management (MPM) services for two VTrans MAS projects. In addition, virtually all of the projects our firm works on involve project management services from project onset, planning, design, permitting, and through construction. This concept of comprehensive service to our clients and projects is what the firm was founded on, and this has continued over the last 61 years. Our project managers are knowledgeable and experienced in local, State, and Federal permit requirements and have formed excellent working relationships with the various regulatory agencies keep projects on track, moving forward, and on budget.

Essex Junction Phase 1 Crescent Connector STP 5300(13), Essex Junction, Vermont

Our firm provided Municipal Project Management services for the City of Essex Junction, Crescent Connector project. This project is a circumferential highway alternative project which is being administered by the Vermont Agency of Transportation. The project included a new local road, "Crescent Connector", which will connect Vermont Route 2A and Vermont Route 15 in the Essex Junction directly adjacent to the Five Corners. The proposed connector road required a new at-grade rail crossing with the New England Central Railroad Main Line. The purpose of the new road is to provide additional connectivity in the downtown area thereby decreasing traffic volumes at the congested Five Corners Intersection. It will also provide opportunities for redevelopment in the area by providing access to currently under-developed parcels.



As the Municipal Project Manager for this 16 million dollar project, our firm provided complete financial management and coordination for the project. We prepared Request For Qualification documents to procure a design engineering team and prepared the necessary documents to procure a construction contractor to complete both phases of the work. Our role also included ensuring that the project is administered in accordance with applicable State and Federal

regulations as well as the VTrans MAS project development process from inception to project completion. We were also responsible for preparing presentation materials and conducting public interest meetings to keep the public informed of the project and seek project goals and limitations from interested parties.

REFERENCE CONTACT

Ande Deforge
Project Manager
VTrans Municipal Assistance Section
219 North Main Street
Barre, VT 05461
Ande.deforge@vermont.gov
(802) 595-6657

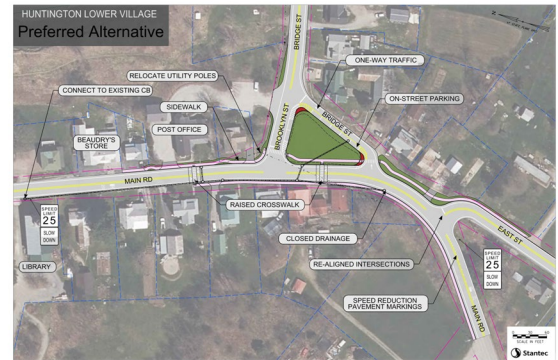
REFERENCE CONTACT

Ricky V. Jones
Public Works Superintendent
City of Essex Junction
2 Lincoln Street
Essex Junction, VT 05452
rick@essexjunction.org
(802) 878-6944



Huntington STP BP24(13), Lower Village Pedestrian and Road Safety Project Huntington, VT

Our firm is currently serving as the Municipal Project Manager for the Town of Huntington Lower Village Pedestrian and Road Safety Project. Through a cooperative agreement between the Town of Huntington and the Vermont Agency of Transportation, our firm is managing the project while the VTrans MAS administers funding and reviews project material for compliance with Federal and State standards and policies as laid out in the MAS Guidebook. Our firm was selected by the Town of Huntington to provide the Municipal Project Management services for this project based the VTrans “At-the-Ready” roster program.



Grant Agreement	• VTrans will draft a Grant Agreement. Upon signing of the Agreement by all appropriate parties, eligible costs may be charged to the project.
VTrans Project Supervisor	• A VTrans Municipal Assistance Bureau employee will be assigned to work with the municipality in the development of the project.
Municipal Project Manager (MPM)	• A Municipal Project Manager may be selected from qualified municipal employees, a regional planning commission or procured utilizing non-construction procurement procedures.
Design Consultant	• A Design Consultant will need to be procured as stated in the respective procurement section of this document.
Project Kick-off Meeting	• This is a meeting of the municipality, MPM, Design Consultant and VTrans Project Supervisor to discuss the goals and objectives of the project and define the project scope, schedule and budget are some of the areas of discussion at this meeting.
Local Concerns Meeting	• This is the first of three public meetings. This gives local citizens and stakeholders with interest in the project a chance to comment on the potential details and impacts of the project. <i>The Alternative Meeting and Local Concerns Meeting may be combined on smaller projects.</i>
Purpose & Need	• From information obtained at the Local Concerns Meeting, the design consultant shall prepare a Purpose & Need Statement that is consistent with the requirements of the state and local community. The problems and goals of the facility must be clearly defined and the language shall be clear and understandable to the layperson.
Alternatives Presentation	• This is the second of three public meetings. The design consultant presents the project alternatives to the public. The purpose of this presentation is to select a preferred alternative for further development. This is also an opportunity for the town to confirm that problems expressed at the Local Concerns Meeting were addressed.
Conceptual Plans	• This is the first step in plan development of the preferred alternative. These plans are approximately 25% of plans development and shall include a construction cost estimate.
Public Information Meeting	• This is the third public meeting. Conceptual plans are presented for public input, including potential impacts of the project on environmental resources.
Environmental Document	• This document details the impacts of the project on resources such as wetlands, historic, archeological, etc. as mandated by the National Environmental Policy Act (NEPA).
Preliminary Plans	• These are detailed design plans which represent approximately 60% of the plans development process. These plans will clearly show the limits of construction. A construction cost estimate shall be included in this submittal.
Right-of-Way	• This is the process during which the temporary and / or permanent property rights needed for the project are identified and acquired, culminating in issuance of a ROW Clearance Certificate by VTrans.
Final Plans	• This step represents approximately 85% of plans development. Refined quantities and a construction cost estimate will be completed as well as draft special provisions.
Contract Plans, Specifications & Estimate (PS&E)	• The PS&E package provides the details of constructing the project. The Contract Plans and Specifications will be used by construction contractors to bid on the project.
Construction	• This is what everyone has been working towards. The project is bid, awarded, the contractor breaks ground and the project is built.
Completion & Acceptance	• The project is completed and the Municipality formally accepts the project in writing.

The project includes the construction of approximately 1,400 linear feet of sidewalks and raised crosswalks along Main Road in Huntington’s Lower Village between the Main Road intersections with Raven Ridge, East Street, Bridge Street, and Brooklyn Street, and the Town Green, and ending just before the parking lot of Beaudry’s General Store. It includes the reconfiguration of the Main Road intersection with East and Bridge Streets to improve safety for pedestrians and all road users. An enclosed drainage system that will extend to just north of the Library and reclaiming and paving the roadway related to the project are also included.

Municipal Project Management services for this project included drafting the Request For Qualifications to procure design engineer services and landscape architect services, which has been completed. The project services will also include presentations at public interest meetings, Town Selectboard hearing presentations, financial management of the project, complete project coordination, and ensuring that the project is developed in accordance with the federal funding requirements, MAB Guidebook, and Town Public Works Specifications. At the Town Selectboard’s request, this project also included the formation of a local Citizen Advisory Committee to engage and provide input on behalf of the community. Our services include participation in regular meetings of this committee.

REFERENCE CONTACT
Jon Lemieux
Project Manager
VTrans Municipal Assistance Section
219 North Main Street
Barre, VT 05461
jon.lemieux@vermont.gov
(802) 498-7064

REFERENCE CONTACT
Adam Argo
Town Administrator
Town of Huntington
4930 Main Road
Huntington, VT 05462
townadmin@huntingtonvt.org
(802) 434-4779



e. RESUMES



JEFFREY P. KERSHNER, P.E.
PRESIDENT

PROJECT RESPONSIBILITY:

Principal Engineer

EDUCATION:

BSCE – University of Vermont - 1993, cum laude

PROFESSIONAL REGISTRATION:

P.E. – State of Vermont, Section I-313 Compliant

P.E. – State of New Hampshire

P.E. – State of Maine

FAA Part 107 Remove Pilot Certification

PROFESSIONAL MEMBERSHIPS:

American Society of Civil Engineers

National Society of Professional Engineers

Tau Beta Pi, National Engineering Honor Society

Order of the Engineer, University of Vermont Link

Chi Epsilon, Civil Engineering Honor Society

EXPERIENCE:

September, 1988 - May 1993

Donald L. Hamlin Consulting Engineers, Inc. Served as an Engineering Technician while in pursuit of a degree in civil engineering, working in conjunction with project engineers on a wide variety of projects.

May 1993 – August 2006

Donald L. Hamlin Consulting Engineers, Inc. Joined full time staff as an Engineer working directly under three (3) licensed Professional Engineers.

August 2006 – March 2017

Donald L. Hamlin Consulting Engineers, Inc. Appointed Vice President and Project Manager.

March 2017 – present

Donald L. Hamlin Consulting Engineers, Inc. Appointed President and Principal Engineer.

Specific project experience includes the following:

- **Iroquois Avenue Waterline and Roadway Replacement, Essex Junction, VT** – Project Manager and Principal Engineer related to the replacement of approximately 1,200 l.f. of waterline and roadway reconstruction involving innovative roadway construction techniques utilizing rigid foam insulation. Provided complete services from project onset through construction, including survey, design, bidding, and construction management and inspection services.
- **Hogback Road Culvert Replacement, Cambridge, VT** – Provided resident engineering and testing services related to the replacement of an existing 11'-0" x 7'-6" x 60' corrugated galvanized metal culvert with a new 28-0" x 8'-0" x 63' aluminum box culvert and related roadway reconstruction along Hogback Road in Cambridge, VT. Work was performed for the Town of Cambridge through the VTrans At-the-Ready program in conjunction with the VTrans Municipal Assistance Section.
- **Route 15 Sidewalk Project, Jericho, VT** – Provided resident engineering and testing services for the Route 15 Sidewalk Project. The project included the construction of new cement concrete sidewalk along VT Route 15 from the Jericho Market extending to the north to connect to the existing sidewalk near Park Street. Resident Engineering, Construction Inspection, and Testing Services for the Town of Jericho through the VTrans At-the-Ready program in conjunction with the VTrans Municipal Assistance Section.
- **Main Street Waterline Replacement, Essex Junction, VT** – Project Manager for survey, engineering, permitting, bidding, construction administration, and resident engineering services related to the replacement of approximately 4,200 l.f. of 12" waterline along Main Street (VT Route 15) in Essex Junction from Densmore Drive to the City/Town line then proceeding cross-country to the CWD facility along Turnberry Ridge.
- **Brickyard Road Culvert Replacement, Essex Junction, VT** – Provided project management, overall quality control, and construction inspection services related to the replacement of two existing six-foot diameter, seventy-foot long CMP culverts with a new twenty-foot span concrete box culvert and related roadway and sidewalk reconstruction along Brickyard Road in Essex Junction. Provided design engineering, permitting, construction inspection for the replacement of approximately 350 l.f. of 8" waterline installed beneath Indian Brook as part of the culvert replacement project.

JEFFREY P. KERSHNER, P.E.
PRESIDENT

- **Tilley Drive Traffic Signal and Turn Lanes, South Burlington, VT** – Project Manager and Principal Engineer for complete survey, design, and construction inspection services for new left and right turn lanes and the installation of a complete traffic signal system and pedestrian crossing along VT Route 116 at the intersection with Tilley Drive in South Burlington.
- **Densmore Drive Upstream Culvert Replacement, Essex Junction, VT** – Provided project management, overall quality control, and construction inspection services related to the replacement of two existing six foot diameter, seventy-foot long CMP culverts with a new twenty-foot span concrete box culvert and related roadway and sidewalk reconstruction along Densmore Drive in Essex Junction.
- **Colchester Laker Lane, Colchester, VT** – Principal Engineer for the Colchester STP 5600(21) for the design of roadway widening along VT 127 (Blakely Road) to accommodate new left and right turns lanes onto Laker Lane in Colchester, VT.
- **Maple Street Culvert and Waterline Improvements, Essex Junction, VT** – Project Manager and Principal Engineer related to the replacement of an existing 24" diameter corrugated metal storm drainage pipe beneath Maple Street and a portion of the Maple Street Park parking area in Essex Junction.
- **Milton High School Roof Drain Outfall Improvements, Milton, VT** – Project Manager and Principal Engineer for complete design and construction services for the Milton High School Roof Drain Outfall and Stormwater Storage Gallery project in Milton, Vermont. This project was awarded the 2012 **Governor's Award for Environmental Excellence**.
- **Railroad Avenue Waterline, Essex Junction, VT** – Project Manager and design engineer for the extension of the municipal water main along the busy Railroad Avenue in Essex Junction to provide system redundancy and improve pressure and flow in this portion of the system. Project involved the design of approximately 490 l.f. of new 8" ductile iron water main, the replacement of an existing hydrant assembly, five new valves, related appurtenances, and full site restoration.
- **Mountain View Office Park, South Burlington, VT** – Project Manager and Principal Engineer for a five-lot subdivision located at the end of Tilley Drive adjacent to Interstate 89 in South Burlington. Project involved the construction of an extension to the existing Tilley Drive roadway with new sewer, water, and storm drainage infrastructure.
- **Quarry Lane Culvert Replacement, Milton, VT** – Principal Engineer for the replacement of existing undersized and deteriorating culvert piping beneath Quarry Lane in the Town of Milton.
- **Williston Central School Building Renovations** – Served on the Facilities Committee and provided engineering services related to the performance of a facilities assessment for the existing Williston Central School elementary school building located in Williston, VT. Performed field investigations to identify facility deficiencies and provided a summary report with site improvement recommendations for civil work items. Provide complete engineering design services for a comprehensive facility renovation project, which was subsequently approved by the voters. Responsible for the preparation of site design plans, permitting assistance, shop drawing review, and construction assistance.
- **Milton High School Recreation Field Rehabilitation** – Provided complete surveying and engineering design services for the Milton High School Recreation Field Rehabilitation. Project included the regrading of the existing football field utilizing a turfgrass sod cross section and new subsurface stormwater storage facilities to improve drainage and stabilize the playing surface. Responsible for the preparation of conceptual and preliminary plans, along with construction cost estimates. Project is currently awaiting funding for final contract plans and construction.
- **Village/City Engineer, Essex Junction, VT** – Provided engineering services as the Village/City Engineer for the Village/City of Essex Junction throughout the last 30 years.
- **Expert Witness Services** – Served as an expert witness and provided credible testimony for four trial proceedings. Also provided pre-trial expert witness consultant service as part of municipal litigation.

RICHARD F. HAMLIN, P.E.
CHIEF OF ENGINEERING

PROJECT RESPONSIBILITY:

Project Manager

EDUCATION:

BSCE – Norwich University - 1979

PROFESSIONAL REGISTRATION:

P.E. – State of Vermont, Section I-313 Compliant

P.E. – State of New Hampshire

P.E. – State of Maine

FAA Part 107 Remove Pilot Certification

PROFESSIONAL MEMBERSHIPS:

American Society of Civil Engineers – Past President VT Section

Vermont Society of Engineers

National Society of Professional Engineers

New England Water Works Association

EXPERIENCE:

Summers of 1976-1978 Donald L. Hamlin Consulting Engineers, Inc.; Rodman - Chainman on various surveys. Construction Inspector on municipal water system improvements.

1979 Surveyor on various water impoundment surveys under contract to the U.S. Army Corps of Engineers in the Indianapolis, Indiana area.

1980 Design Engineer and Construction Inspector for various U.S. Army Facility improvements in Northern portion of West Germany.

1982 Full time staff Donald L. Hamlin Consulting Engineers, Inc.; Survey Party Chief on a variety of boundary and construction surveys. Resident Engineer for \$7 million wastewater collection system. Responsible for inspection and location documentation of over three hundred residential and commercial sewer service installations. Responsible for the design of specialized residential septic systems. Project Engineer on various drainage and road improvement projects. Responsible for the preparation of industrial park feasibility studies.

1986-1993 Donald L. Hamlin Consulting Engineers, Inc., Board of Directors: Corporate responsibilities including employee compensation, technical specifications, and project administration.

1993 **Donald L. Hamlin Consulting Engineers, Inc.** - Appointed Executive Vice President,

2006 **Donald L. Hamlin Consulting Engineers, Inc.** - Appointed President and Principal Engineer

March 2017–present **Donald L. Hamlin Consulting Engineers, Inc.** - Appointed Chief of Engineering

Project Experience:

Project Management, Design, and inspection of a variety of projects including a 78-acre mixed commercial, retail, residential development, an innovative sewer system to serve restaurants located on top of the highest mountain in Vermont, and numerous roadway designs which include both pedestrian and bicycle accommodations. Performed design services for the Government of the Virgin Islands related to new roadway alignments through environmentally sensitive areas. Served as the single point contact and Principal Engineer for the Village/City of Essex Junction, Village/City Engineer, throughout the last 30 years. During this time, provided complete engineering design, project management, asset management, capital budget planning, utility map preparation, emergency flooding assistance, and construction phase services on a continuous on-call basis. Also served on the Village of Essex Junction Capital Committee and on the Bike/Walk Advisory Committee.

MARK L. DOWNING, CPESC
VICE PRESIDENT

EDUCATION:

Mechanical Engineering – Center for Technology, Essex 2002
AE – Vermont Technical College 2005

PROFESSIONAL MEMBERSHIPS:

National Vocational Technical Honor Society

PROFESSIONAL REGISTRATION:

Class BW – Potable Water Supply and Wastewater System Designer
CPESC – Certified Professional in Erosion and Sediment Control

EXPERIENCE:

June 2002 - May 2005

Donald L. Hamlin Consulting Engineers, Inc. Served as an Engineering Technician on part time basis while in pursuit of a degree in civil engineering, working in conjunction with two project engineers on a wide variety of projects. Work experience included:

- Computer Aided Design or CAD Draftsmen using the latest AutoCAD™ and Eagle Point™ Software
- Surveying Technician
- Construction supervision
- Water Quality Testing
- Effluent Testing
- Traffic Data Collection

May 2005 – March 2023

Donald L. Hamlin Consulting Engineers, Inc. Joined full time staff as an Engineering Technician working directly under licensed Professional Engineers.

March 2023 – February 2024

Donald L. Hamlin Consulting Engineers, Inc. Appointed Chief of Field Operations. Project responsibilities include field survey, site design, residential and commercial septic system designs, water quality testing, effluent testing, and construction inspection and field measurements.

February 2024 – present

Donald L. Hamlin Consulting Engineers, Inc. Appointed Vice President.

Specific project experience includes the following:

- Resident Engineer for the Enosburg Falls STP BP16(7) project in Enosburg Falls, VT during the summer of 2025
- Served as the Quality Control Officer and the on-site plan coordinator for the 334-unit South Village residential development on a ±225 acre site in South Burlington
- Served as the primary construction inspector for the construction of a 9-unit Planned Unit Development located on West Shore Road in Georgia
- Provided design and construction inspection of Vermont's Camp Ta-Kum-Ta, located on Sunset View Road in South Hero
- Provided design and inspection for the construction of a new roof drain outfall and 70,000 gallon stormwater storage gallery located at Milton High School
- Provided inspection for the construction of a two-story office building located on Lot 3 of the Mountain View Office Park in South Burlington
- Provided construction inspection services related to the 2006 installation of an advanced stormwater treatment system in the Village of Morrisville
- Stormwater Pollution Prevention Plan Coordinator for the Rathe Salvage Yard in Colchester, VT

ZACHARY P. KERSHNER, E.I.
PROJECT ENGINEER

PROJECT RESPONSIBILITY:

Project Engineer

EDUCATION:

Essex High School, Essex Junction, VT
BSCE – Quinnipiac University - 2023, magna cum laude

PROFESSIONAL REGISTRATION:

E.I. – State of Vermont
VT Class A Designer
FAA Part 107 Remote Pilot Certification

PROFESSIONAL MEMBERSHIPS:

Tau Beta Pi, National Engineering Honor Society
Order of the Engineer, Quinnipiac University Link

EXPERIENCE:

June 2016 - May 2023

Donald L. Hamlin Consulting Engineers, Inc. Served as an Engineering Intern while in pursuit of a degree in civil engineering, working in conjunction with project engineers and land surveyors on a wide variety of projects.

May 2023 - present

Donald L. Hamlin Consulting Engineers, Inc. Joined full-time staff as a Project Engineer providing design, permitting assistance, and construction services on a wide variety of projects.

Specific project experience includes the following:

- Designer and Resident Engineer for the Iroquois Avenue Waterline and Roadway Replacement project in Essex Junction, VT constructed during the summer of 2025.
- Resident Engineer on the Jericho STP BP21(13) Route 15 Sidewalk project in Jericho, VT during the summer of 2025.
- Resident Engineer for the Hogback Road Culvert project, Cambridge ER P20-1(845), in Cambridge, VT during the summer of 2024.
- Resident Engineer for the Main Street Waterline Replacement Project in Essex Junction, VT during the summer of 2023.
- Resident Engineer for the Densmore Drive Upstream Culvert Replacement Project in Essex Junction, VT during the summer of 2022.
- Resident Engineer for the Townhouse Condominium Water Service and Drainage Pipe Replacement Project in Stowe, VT during the summer of 2021.
- Resident Engineer for the Essex Junction TAP TA 16(7) Gravel Wetland project in Essex Junction, VT during the summer of 2020.
- Resident Engineer for the Lamoille Street reconstruction in Essex Junction, VT during the summer of 2020.
- Assistant Resident Engineer for the municipal wastewater connection at the Founders Memorial School in Essex, VT during the summer of 2019.
- Performed construction surveys related to the construction of a new commercial building at 194 Tilley Drive in South Burlington, VT during the summer of 2019.
- Served as a survey crew member for topographic field surveys for the Grand Isle Ferry Terminal in South Hero, VT, for the Foster residence in Colchester, VT both in the summer of 2019.
- Performed road measurements, quantities computations, and cost estimates for roadway repaving projects along Cobble Hill Road, Cooper Road, Hardscrabble Road, Lena Court, Quarry Lane, Russel Circle, and Bear Trap Road in Milton, VT during the summer of 2018.
- Prepared complete Erosion Prevention and Sediment Control plans for 300 new camp sites at Apple Island Resort in South Hero, VT; for the construction of two manure storage facilities and related drainage improvements at the Belter Family Farm in South Burlington, VT; and for new parking and drainage improvements at the Mount Mansfield Co. Harlow Hill Property in Stowe, VT.

RYAN A. WARD, L.S.
LICENSED SURVEYOR

PROJECT RESPONSIBILITY:

Licensed Surveyor

EDUCATION:

BSCE – University of Vermont - 2005

PROFESSIONAL REGISTRATION:

L.S. – State of Vermont

PROFESSIONAL MEMBERSHIPS:

Vermont Society of Land Surveyors

EXPERIENCE:

May 2005 – December 2005

Krebs & Lansing Consulting Engineers, Inc. Served as an Engineering Technician.

- Calculated slopes and intersections of storm and sewer pipes for compliance with State regulations
- Conducted percolation and permeability tests for in-ground septic systems
- Drafted mark- up sheets for engineer

December 2005 – December 2013

Krebs & Lansing Consulting Engineers, Inc. Served as an Engineer/Survey Technician

- On-site construction administrator for Champlain Water District's installation of new 24" water line on National Guard Road in South Burlington; prepared and submitted daily construction reports to Champlain Water District
- Designed in-ground septic systems under supervision of professional engineer
- Conducted yearly septic inspections for large, inefficient in-ground system; observed conditions and altered flows
- Conducted storm water inspections

December 2013 – October 2019

Krebs & Lansing Consulting Engineers, Inc. Served as a Licensed Surveyor.

- Conducted title searches and research for various parcels in Town records
- Evaluate deed descriptions against on-the-ground field measurements
- Collect field measurements and adjust horizontal and vertical control for boundary and topographic surveys
- Supervise and train survey technicians
- Complete boundary surveys on AutoCAD 3D
- Prepare and perform layout for buildings and other construction activities

November 2019 - Present

Donald L. Hamlin Consulting Engineers, Inc. Serving as a Licensed Surveyor.

REED L. ABRY, E.I.
PROJECT ENGINEER

PROJECT RESPONSIBILITY:

Project Engineer

EDUCATION:

Rice Memorial High School, South Burlington, VT

University of New Hampshire – Bachelor of Science in Civil Engineering, 2025

EXPERIENCE:

Summer 2021

Terrill House – Construction Assistant. Assisted on a major home remodel job site. Performed many construction tasks including window installation, removal of siding, siding trim J-Channel installation, framing, fan duct installation, painting, caulking, and ceiling strapping.

Summer 2022 and 2023

Leach Construction – Construction Assistant I & II. Worked on multiple house builds and remodels. In 2023 worked in a more advanced role with increased responsibilities and minimal supervision. Performed more intricate measurements and installations.

Summer 2024

Donald L. Hamlin Consulting Engineers, Inc. – Summer Intern. Worked under multiple Professional Engineers performing paving inspection, inspection of stormwater systems, and CAD drafting/design. Also served on the field survey crew.

May 2025 - present

Donald L. Hamlin Consulting Engineers, Inc. Joined full-time staff as a Project Engineer providing design, permitting assistance, and construction services on a wide variety of projects.

Specific project experience includes the following:

- Resident Engineer for the Jericho Sidewalk project in Jericho, VT during the summer of 2024.
- Worked on municipal wastewater system capacity analysis computations.
- Field survey work for along Pearl Street in Essex Junction for a multi-use pathway project.