

AT-THE-READY (ATR) CONSULTANT ENGINEERING SERVICES - MUNICIPAL PROJECT MANAGEMENT 2026

MUNICIPAL PROJECT MANAGEMENT



Municipal Project Management Qualifications

Submitted by:

GPI/Greenman-Pedersen, Inc.

Locations throughout Vermont and the North Country of New York



February 27, 2026

Nydia Lugo, Civil Engineer
Agency of Transportation, Municipal Assistance Section
219 North Main Street
Barre, VT 05641

Via: Electronic Submittal - FTP Upload

**RE: At-The-Ready Consulting Engineering Services for Municipalities 2026
Municipal Project Management**

Dear Ms. Lugo:

Greenman-Pedersen, Inc. (GPI) is pleased to submit our Statement of Qualifications to VTrans in the hope of being relisted on the roster of firms prequalified to provide **Municipal Project Management (MPM) Services** to municipalities choosing to procure such services through the VTrans At-the-Ready (ATR) selection process. GPI is a multi-disciplined firm with a proven 60-year record of providing high quality engineering and construction services. We maintain a permanent staff of 1,800+ professionals in over 60 locations and many of our staff specialize in the management and development of transportation projects in the public sector.

GPI has been listed on the VTrans ATR qualified roster for municipal project management (MPM) services since 2020. Over that period, we have been selected to provide MPM services on seven local projects coordinated through VTrans MAS, six via the ATR process and one other via the traditional RFP/RFQ process. **Mr. Patrick (Pat) Travers, E.I.T.**, has been fulfilling GPI's MPM responsibilities for all those undertakings and we are continuing to offer his services as our ATR MPM. Prior to his employment with GPI, Mr. Travers provided MPM services, going back to 2013, for a variety of municipal projects developed via the VTrans MAS flowchart process. Additionally, he has been qualified to provide ATR MPM services since VTrans implemented the MPM ATR roster in 2017. Pat has exemplary relationships with many communities across the state and has earned their trust as a competent, reliable, and professional MPM.

In addition to Mr. Travers, GPI is pleased to offer the services of **Mr. Craig Plumb** as an MPM. Mr. Plumb has been with GPI for twelve years, and during that time has fulfilled increasingly more responsible positions as a Construction Inspector and Resident Engineer on VTrans and municipal projects, including nine coordinated through VTrans MAS. Prior to working for GPI, Mr. Plumb served as the Public Works Director for the Town of Milton and the Deputy Director of Public Works for the City of South Burlington. During those tenures, Craig served as those municipalities' MPM on several infrastructure projects, including those coordinated through VTrans MAS.

This qualifications submittal includes general firm information, organizational and availability charts, qualifications and experience of the firm/team, examples of relevant projects and key personnel and their resumes. We also demonstrate our experience working with municipalities and our clear understanding of the scope of work for locally managed projects. We are confident the GPI team offers the most qualified MPM's and look forward to continuing to provide these services to municipalities through the ATR process.

We are grateful for the opportunity to submit this Statement of Qualifications, and we hope it clearly reflects our firm's ability and enthusiasm to perform Municipal Project Manager Services through the VTrans MAS At-the-Ready (ATR) selection process. **We have received and reviewed RFQ Change #1, dated 23-Feb-2026.**

With Gratitude,

GPI/GREENMAN-PEDERSEN, INC.



John P. Simkulet, P.E., Executive Vice President | Branch Manager
80 Wolf Road, Suite 600, Albany, NY 12205
518.898.9544 | jsimkulet@gpinet.com

TABLE OF CONTENTS

Two-Tier (State-Local) Qualifications-Based Selection for At-The-Ready (ATR) Consultant Engineering Services for Municipalities | MUNICIPAL PROJECT MANAGEMENT

Cover

Cover Letter

SECTION 1 | GENERAL INFORMATION

Introduction to Consultant Firm..... 1

SECTION 2 | Organizational Chart and Availability Chart

Organizational Chart 2

Availability Chart 2

SECTION 3 | Technical Capabilities

Qualifications & Experience of Firm..... 3

Project Examples: Municipal Project Management Services 5

Key Personnel..... 7

SECTION 4 | Resumes of Key Personnel

Resumes 8

1. GENERAL INFORMATION



GENERAL INFORMATION

Introduction to Consultant Firm

GPI/Greenman-Pedersen, Inc. is pleased to submit our Statement of Qualifications to the Vermont Agency of Transportation (VTrans) for the privilege of remaining on the At-the-Ready (ATR) roster for providing Municipal Project Management (MPM) Services to municipalities developing local transportation facilities through the VTrans Municipal Assistance Section (MAS). Founded in 1966, GPI is a leading multi-discipline engineering consulting firm, with a permanent staff of 1,800+ professionals in over 60 locations in the United States. GPI specializes in innovative design, management and construction oversight for transportation infrastructure and building projects. GPI has been working closely with VTrans since 1996 and is very familiar with the processes and requirements for projects developed by a municipality or by VTrans.

Since 2020, GPI has been providing MPM services to Vermont municipalities through the VTrans MAS ATR selection process and **Mr. Patrick Travers, E.I.T.**, has been handling these assignments for GPI. Mr. Travers has earned a reputation as a practical and effective MPM who brings his exemplary capabilities to every project. Mr. Travers knows how to develop and deliver municipally managed projects and has demonstrated the ability to meet schedules, stay on budget and follow the rules. Additionally, before coming to GPI in 2020, Pat provided MPM services, over a seven-year period, to several municipalities developing transportation projects through VTrans MAS. During the past five years, he has successfully managed municipal efforts involving roadway reconstruction, sidewalks, slope stabilizations, an intersection reconfiguration, and a bridge replacement.

In addition to Mr. Travers, GPI is offering **Mr. Craig Plumb** as a second MPM available to provide ATR services to Vermont municipalities. For the past 12 years, Mr. Plumb has been fulfilling resident engineering and construction inspection services on a wide variety of municipal and VTrans projects, valued at up to \$22M. Prior to that, he held positions as a public works director and deputy public works director for two Vermont municipalities, which over the years involved managing many local transportation and infrastructure projects, including some coordinated through VTrans MAS.

Together, Messrs. Travers and Plumb have proven records in performing project management services in Vermont, and they have developed solid client relationships based on trust and performance throughout the state. Additionally, they can provide the guidance that will keep projects moving forward, thereby avoiding the pitfalls and traps, and ensuring proper processes are followed to not jeopardize the grant money or project funding. Pat and Craig have the experience and temperament to guide Vermont municipalities through any project type that is partially or fully funded by Federal and State agencies, and both will make outstanding MPM's for any municipality needing that service.

GPI's Principal-In-Charge

John Simkulet, P.E., Exec VP | Branch Manager
80 Wolf Road, Suite 600, Albany, NY 12205
518.898.9544 | jsimkulet@gpinet.com

GPI's Contract Manager

David Hoyne, P.E., DIR. Construction Services-VT
1445 Center Fayston Rd, N Fayston, VT 05660
802.917.4310 | dhoyne@gpinet.com

GPI understands that VTrans would like to select up to six (6) consultants to perform MPM services, as stated in the RFQ, whom the municipalities can utilize to engage for their projects. The intent is to develop a pre-qualified roster of consultants to simplify and accelerate the contracting process for municipalities, and to ensure the selected firms have the necessary skills and resources to perform the work. Once VTrans established the qualified roster, the municipalities form a selection committee and choose the most qualified firm for their project. That committee can then proceed to negotiate a scope and fee with the selected firm, and if the negotiations are successful, a contract may be executed. As GPI has been providing MPM services over the past six years to municipalities procuring such services via the VTrans ATR process, we are very familiar with how that process works.

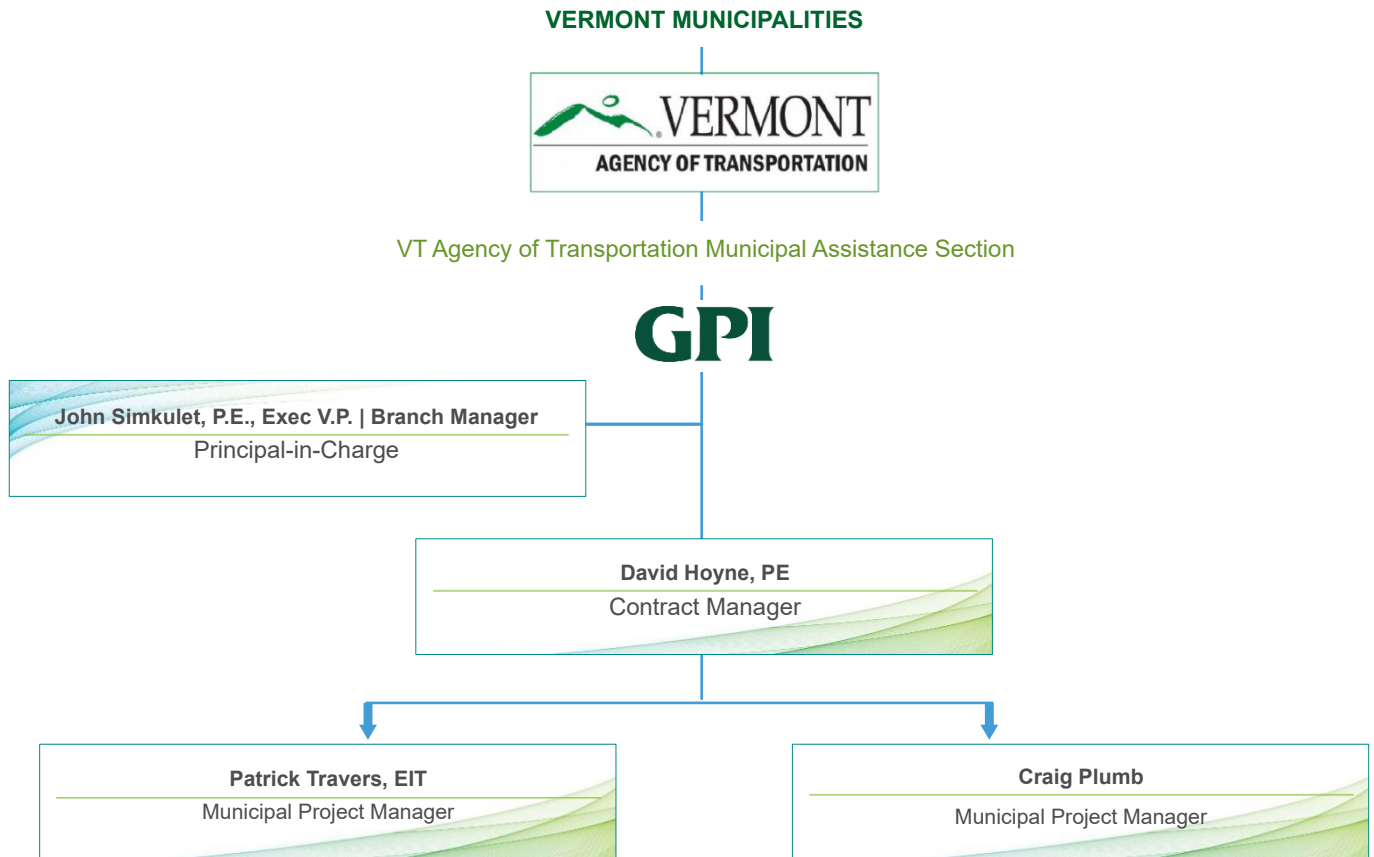
Subconsultants

GPI will not be engaging the services of any subconsultants for our MPM assignments.

2. ORGANIZATIONAL CHART & AVAILABILITY CHART



ORGANIZATIONAL CHART



AVAILABILITY CHART

Name	Project Management Title Classifications	Availability
Patrick Travers, EIT	MPM	100%
Craig Plumb	MPM	50%

3. TECHNICAL CAPABILITIES



TECHNICAL CAPABILITIES

Qualifications and Firm Experience

For decades, GPI has been performing project management services for clients in the building and public infrastructure sectors, for private clients, state transportation agencies (DOT's) and municipalities. GPI is accustomed to providing comprehensive project management services to public and private sector clients undertaking development or capital improvement projects. Our project managers are trained to be well versed with the client's project development process, to understand critical path schedules and scheduling software, to manage the design and technical support services and offer outstanding communication and documentation services.

Managing a complex project requires a detailed working knowledge of the project goals and constraints, which leads to the development of a realistic project schedule and estimate of costs. These must incorporate the regulatory, right-of-way and utility relocation processes and associated schedule implications. The project manager is the conductor and must have the knowledge, skills, and experience to guide the team in a measured and predictable manner. The project manager must be prepared to augment the team with the necessary resources and hold team members accountable for quality, schedule, and cost.

At GPI our project managers have the tools and process controls in place to guide a project and be successful in meeting our clients' needs and expectations.

Over the past six years, our presence in the Vermont market for providing municipal project management (MPM) services, on projects developed through the VTrans MAS process, has been capably performed by **Mr. Patrick (Pat) Travers, E.I.T.** Prior to joining GPI in 2020, Mr. Travers performed MPM services on several other Vermont municipal projects, dating back to 2008. All those assignments involved providing such services consistent with the tasks and responsibilities outlined in the MAS *Local Projects Guidebook for Locally Managed Projects* and the VTrans MAS Project Development Flowchart.

During the past five years, Mr. Travers has fulfilled MPM assignments for the following municipal infrastructure projects coordinated through VTrans MAS:

- Town of Putney, Putney Landing Pedestrian Walkway Project, Phase 1, Putney TAP TA 25(1)
- Town of Readsboro, Bosley Hill Road Slope Stabilization Project, Readsboro STP MM 25(1)
- Town of Plainfield, Brook Road Reconstruction Project, Plainfield ER P24-3 (667)
- Town of Irasburg, Community Sidewalk Project, Irasburg STP BP 24(15)
- Town of Bristol, Basin Street Improvements, Bristol TAP TA 22(1)
- Town of Readsboro, Bosley Hill Road Scoping Study, Readsboro STP MM 22(2)
- Town of Lowell, Bridge #10 Replacement, Lowell ER P20-1 (908)

In addition to these projects, between 2008 and 2020, Mr. Travers provided MPM services for four other municipal undertakings coordinated through VTrans MAS. He also provided MPM services for other municipalities that developed infrastructure projects outside the MAS process. Pat was also under contract, from 2009 through 2019, by Vermont State Parks, to oversee complete development of its park projects in the northwest quadrant of Vermont. During that time, Pat managed 15 projects for the State Parks that included park planning and development, infrastructure construction, building renovations, historic restoration, and other capital improvements.

Over the past 17 years, Pat has worked with nearly 40 Vermont municipalities, the Vermont Association of Snow Travelers and a state agency on transportation projects funded through VTrans MAS; both as a Construction Inspection Consultant and as a Municipal Project Manager. This experience has bolstered him with a thorough working knowledge of the VTrans MAS Project Development Process, the duties, and responsibilities of the MPM, NEPA and the various permit processes, the administrative and transparency requirements, rights-of-way acquisition, and the State and Federal funding guidelines surrounding public infrastructure construction.

Mr. Travers has considerable experience with federally funded projects and a working knowledge of the VTrans processes and specifications. He offers an extensive background in developing appropriate design solutions, performing constructability reviews, controlling project scope and costs, and ensuring that projects achieve the design

elements that make them biddable, buildable, and compliant with design guidelines. Pat also knows the projects must conform to all the procedures and regulations required by FHWA and VTrans, including the process workflows and documentation requirements.

GPI is also offering the services of **Mr. Craig Plumb** for At-the-Ready MPM assignments. Mr. Plumb has been with GPI for twelve years, starting initially as a Construction Inspector and then Chief Inspector on several VTrans projects. Over the years, Craig has taken on more challenging assignments and is now serving as a Resident Engineer on municipal transportation and infrastructure projects, most of which are coordinated through VTrans MAS. Currently he is the Lead Resident Engineer for the \$22M Main Street Revitalization Project in the City of Winooski and later in 2026 will be fulfilling the same responsibilities for South Burlington's Pedestrian / Bicycle Bridge over Interstate 89, which is being developed through VTrans MAS.

Prior to working with GPI, Mr. Plumb served as the Director of Public Works for the Town of Milton and the Deputy Director of Public Works for the City of South Burlington. In those positions, he managed several municipal infrastructure projects annually, including those involving federal and state funding that flowed through VTrans MAS. During his public works tenure, Craig managed projects ranging up to \$20M in value, and he is intimately familiar with all processes involved in developing a municipal infrastructure project through the VTrans MAS Project Development Flowchart.

Specific capabilities offered by the GPI team include:

- Familiarity with State of Vermont procurement and contracting process
- Knowledge of VTrans Specifications, the MAS Project Development Flowchart, MAS procedures and requirements
- Familiarity with state and local permitting processes
- Knowledge of federal government procurement guidelines
- Knowledge of federal funding regulations (CFR)

Our team has also worked under contracts governed by the following reference materials, guidebooks, and manuals, and has a working knowledge of the requirements contained within:

- VTrans Municipal Assistance Section Local Projects Guidebook for Locally Managed Projects, updated January 2026
- VTrans Specifications for Contractor Services, June 2014, Updated May 2019
- VTrans Pedestrian and Bicycle Facility Planning and Design Manual
- Vermont Standard Specifications for Construction 2011, 2018 & 2024
- VTrans General Special Provisions for 2011, 2018 & 2024
- VTrans Route Survey Manual
- VTrans Quality Assurance Program
- VTrans Materials Sampling Manual
- VTrans Approved Products List
- VTrans List of Materials with Advance Certification
- Special Provisions for Individual Projects
- VTrans Work Zone Safety and Mobility Policy and Guidance Document, 2021
- Manual on Uniform Traffic Control Devices, 11th edition

The duties and responsibilities for the MPM as outlined in the *Local Projects Guidebook* are clearly articulated and very familiar to Pat and Craig. Whether it is invoicing or billing, preparing and executing contracts, conducting kick-off or local concerns meetings, shepherding the PS&E development, addressing contaminated soils or utility relocations, or preparing reimbursement invoices to MAS, Vermont municipalities will have the confidence that GPI's MPMs have the experience to deliver the project. More importantly, our MPMs diligently take the responsibility for the successful delivery of any project.

Project Examples

Town of Putney, Vermont

Putney Landing Pedestrian Walkway Project | Putney TAP TA 25(1)

In January 2026, Pat Travers took on the assignment of serving as Municipal Project Manager for this undertaking that will culminate in the creation of a handicap accessible pedestrian walkway stretching from Main Street (US Rte. 5) to Old Depot Road at the southern end of Putney Village. An RRFB-protected crosswalk will also be placed across Main Street in front of the Public Library. Currently, design engineering services are being sought for this project, which is being coordinated through the VTrans Municipal Assistance Section.



Contacts: Karen Astley, Town Manager, 802.387.5862 x1 | manager@putneyvt.gov
Jon Lemieux, VTrans-MAS Project Manager, 802.498.7064 | Jon.Lemieux@vermont.gov

Town of Readsboro, Vermont

Bosley Hill Slope Stabilization Project | Readsboro STP MM 25(1)



In November 2025, Pat Travers began fulfilling Municipal Project Management responsibilities for this effort that will involve stabilizing a failing embankment along the South Branch of the Deerfield River, which has been causing approximately 700 feet of Bosley Hill Road to periodically slough towards the river. The slope will be reinforced, an underdrain system will be installed, and the roadway will be moved northward, away from the riverbank. At this stage, design engineering services have been secured, and Conceptual Plans are being developed. This project is being coordinated through the VTrans Municipal Assistance Section.

Contacts: Karen Boisvert, Administrative Assistant, 802.423.5652 | admin@readsborovt.org
Liz Craffey, VTrans-MAS Project Manager, 802.224.6121 | Elizabeth.Craffey@vermont.gov

Town of Plainfield, Vermont

Brook Road Reconstruction | Plainfield ER P24-3 (667)

During the fall of 2025, Pat Travers started providing Municipal Project Management services for the Town of Plainfield on this project which will result in the reconstruction of a two-mile segment of Brook Road, which was washed out during a severe flooding event in July 2024. Three bridges were also destroyed during that flood. At this stage, design services are being procured, and various alternatives will be explored to identify the most prudent approach to restoring this segment of roadway. This emergency project is being coordinated through the VTrans Municipal Assistance Section.



Contacts: Karl Bissex, Selectboard Chair, 802.454.8461 | selectboard8@plainfieldvt.gov
Ross Gouin, VTrans-MAS Project Manager, 802.595.2381 | Ross.Gouin@vermont.gov

Town of Irasburg, Vermont

Community Sidewalk Project | Irasburg STP BP 24(15)



In June 2025, Pat Travers started Municipal Project Management responsibilities for this project which involves the development of a 1,500-foot-long handicap accessible sidewalk along VT Route 58 that will connect the Irasburg Village School with the center of Irasburg Village. Curbing and a stormwater collection system will also be built along the south side of Route 58. At this stage, Conceptual Plans have been developed and are under review in advance of the public informational meeting.

Contacts: Michael Booth, Selectboard Member, 802.754.2242 | Michael.Booth@vermont.gov
Daniel Judkins, VTrans-MAS Project Supervisor, 802.595.6184 | Daniel.Judkins@vermont.gov

Town of Bristol, Vermont

Basin Street Improvements | Bristol TAP TA 22(1)

Since December 2022, Pat Travers has been fulfilling responsibilities as the Municipal Project Manager for this effort that will ultimately stabilize a failing slope along East Main Street and reconfigure the dangerous intersection where Basin Street meets East Main Street. Currently, Conceptual Plans have been completed, and the Town has put the project on hold due to funding challenges. The project is being coordinated through the VTrans Municipal Assistance Section.



Contacts: Ian Albinson, Selectboard Member, 802.453.2410 | ialbinson.sb.bristolvt@gmail.com
Peter Pochop, VTrans-MAS Project Manager, 802.477.3123 | Peter.Pochop@vermont.gov

Town of Readsboro, Vermont

Bosley Hill Road Scoping Study | Readsboro STP MM 22(2)



From 2022 to 2024, Pat Travers served as Municipal Project Manager overseeing development of a Scoping Study that resulted in a preferred alternative design for stabilizing a failed riverbank along the South Branch of the Deerfield River and relocating a 700-foot-long segment of Bosley Hill Road. The completed Scoping Study was subsequently used by the Town to secure grant funding from VTrans to fully develop the project. This Scoping Study effort was coordinated through the VTrans Municipal Assistance Section.

Contacts: Karen Boisvert, Administrative Assistant, 802.423.5652 | admin@readsborovt.org
Nydia Lugo, VTrans-MAS Project Supervisor, 802.595.3347 | Nydia.Lugo@vermont.gov

Town of Lowell, Vermont

Bridge #10 Replacement | Lowell ER P-20-1(908); ER 0136

From 2021 to 2025, Pat Travers was the Municipal Project Manager for this project that culminated in the 2024 construction of a replacement for the Hodgeman Bridge, located where the Hazen Notch Road crosses over the Burgess Branch of the Missisquoi River. The original bridge was destroyed by a major flooding event in October 2020. This project was coordinated through the VTrans Municipal Assistance Section.



Contacts: Darren Pion, Selectboard Member, 802.744.6559 | dpiontransport@gmail.com
Chris Hunt, VTrans-MAS Project Manager, 802.595.4556 | Chris.Hunt@vermont.gov

Identification of Key Personnel

The Contract Manager for this project will be **Mr. David Hoyne, P.E.**, Vice President/Director of Construction Services-VT, and the former State Construction Engineer for VTrans. Mr. Hoyne retired from VTrans in 2017 after a 28-year career with the Agency. Mr. Hoyne also served as the Vice Chair of the AASHTO Committee on Construction from 2010 until his retirement, assuming a leadership role with the national committee charged with advancing the state of practice for the highway construction program.

For the last 11 years of his career as the State Construction Engineer, David was responsible for delivering the capital construction program for VTrans in conformance with all State and Federal requirements. The program was approximately \$200 million annually and consisted of a mix of design-bid-build, design-build and CMGC projects for all modes of transportation. David was directly responsible for the development of the procedures contained in the VTrans Construction and Regional Procedures Manuals and has mastered the requirements for compliance. In addition, he is considered an expert in the VTrans Standard Specification for Construction, the Code of Federal Regulations (CFR), partnering, claims avoidance, claims analysis and resolution, and root cause analysis. Mr. Hoyne will guide, coach, and advise the team throughout the life of this assignment, bringing tremendous value to the work.

Mr. Patrick (Pat) Travers, E.I.T., GPI Project Manager and Construction Inspection Supervisor, is our primary designated Municipal Project Manager for MPM contracts procured through the ATR process. He possesses a degree in civil engineering and holds an Engineer-in-Training license. Mr. Travers has over 45 years of professional experience in engineering, construction management and business management, and for the past 30 years, most of his focus has been in managing construction projects in the commercial and public infrastructure sectors. Pat's career has included working for municipal agencies, earth moving contractors, general contractors in commercial construction, design-build firms, a multi-national engineering corporation, a state agency, the former Staff Sterling Management, and GPI. He has also owned businesses in the construction, education, and agriculture arenas.

Pat commands a strong expertise in public infrastructure projects and has fulfilled responsibilities as a construction inspector, resident engineer, and project manager on many public sector efforts throughout Vermont, New York, and Connecticut, including those coordinated through VTrans MAS. In addition to his experience as a Municipal Project Manager, he has managed 36 Construction Inspection Services contracts on local transportation projects developed through MAS.

Mr. Travers' personal strengths include strong verbal and written communication skills; diplomatic public relations capabilities; excellent public speaking and public presentation skills and being able to effectively coordinate efforts among all those involved in a project, such as owners, design firms, construction inspectors, contractors, and the general public. He is also adept at managing multiple construction projects at the same time.

Mr. Craig Plumb is our second designated Municipal Project Manager available for assignments on MPM contracts procured via the ATR process. He will perform those responsibilities under the guidance of Mr. Hoyne and mentored by Mr. Travers. Craig has had a successful 36-year career in the construction industry fulfilling a wide range of responsibilities as a civil engineering technician, public works director, construction inspector and resident engineer. He is well-versed in requirements tied to federal and state funding for municipal projects, is intimately familiar with the VTrans MAS project development process and knows the VTrans Standard Specifications for Construction. Craig is currently serving as the Resident Engineer for the \$22M Main Street Revitalization Project in the City of Winooski. He has also overseen the development of several municipal projects which followed the VTrans MAS process. Additionally, he is well organized, is adept at moderating productive project meetings and possesses strong interpersonal skills. These talents provide Craig with the appropriate tools to serve as a successful MPM on municipal infrastructure projects.

4. RESUMES



David J. Hoyne, P.E.

Vice President

Director of Construction Services, VT



PROPOSED PROJECT ASSIGNMENT

Senior Construction Engineer

EDUCATION

BS/1989/Civil Engineering

REGISTRATIONS/CERTIFICATIONS

1994/Professional Engineer/VT
National Highway Institute Certified Instructor

YEARS WITH FIRM 8

TOTAL YEARS EXPERIENCE 36

COURSE WORK

FHWA "Bridge Maintenance Training", 2000
FHWA "Construction Program Management
Workshop", 2005
FHWA-NHI-Course No. 13049 "Economical and
Fatigue Resistant Steel Bridge Details, 1990
FHWA-NHI- Course No. 01-004 "Highways in the
River Environment", 1993
FHWA-NHI-Course No. 132014, "Drilled Shafts",
2002
FHWA-NHI-Course "Alternative Contracting", 2005
FHWA-NHI-Course No. 134064, "Transportation
Construction Quality Assurance", 2006
FHWA-NHI-Course No. 136065, "Risk
Management", 2008
FHWA-NHI-Course 420018 "Instructor
Development Course", 2017
Additional Course work at the end of the resume

Professional Profile

Mr. Hoyne is an expert with demonstrated leadership for all phases of program delivery in transportation engineering. He is driven to inspire transportation professionals to seek excellence in their work and promote a culture of quality and the fundamental principles and canons of the engineering profession. Mr. Hoyne is a leader with a clear focus on safety.

Mr. Hoyne has built a successful career by developing lasting and effective relationships with all stakeholders, maximizing employee potential by aligning employee strengths with opportunities, and leading organizational excellence through process improvement, performance management, training, and documentation. Mr. Hoyne has extensive experience developing and delivering technical training and understands how professional development leads to career opportunities.

Mr. Hoyne is an expert at constructability reviews, contract specifications, root cause analysis, and developing solutions to move complicated challenges forward. Mr. Hoyne has extensive experience analyzing contractor's claims, delays, and disputes and has served as an expert witness and lead negotiator for many complex claims and mediation.

Firm Experience

Greenman-Pedersen, Inc. 09/17+. As Senior Construction Engineer, Mr. Hoyne provides expertise with constructability reviews, claims analysis, and client relationships for locally managed construction services contracts, serves as a subject matter expert in construction engineering, asset management, process improvement, bridge management, and inspection, and provides training and onboarding expertise for construction inspection staff.

Municipally Managed Projects, VT. Mr. Hoyne is the regional manager for resident engineer and construction inspection services for locally managed projects. Responsibilities include developing technical and cost proposals, contracting, client relations, and overall quality control of GPI's operations. Projects have included the Market Street reconstruction project in South Burlington, the Sykes Mountain Avenue Roundabouts project in Hartford, and bridge, roadway, and sidewalk projects statewide.

North Hero-Grand Isle BHF 028-1(26); Grand Isle County, VT. 01/20-04/20. This project on US 2 is for the replacement of Bridge 8. The contractor was required to build a temporary drawbridge prior to replacing the existing drawbridge, so that impacts to vehicular traffic were minimized. The project encountered contaminated soils and Mr. Hoyne advised VTrans on the review of the contractor's pricing for extra work and the subsequent change order. The project was contracted following the Construction Manager/General Contractor (CMGC) process. *Client: VAOT; Taylor Waring (RE)*

Albany Port District Commission. 04/18-09/18. Mr. Hoyne provided expert guidance to the APDC as they navigated a notice of claim for a construction delay alleged by the contractor. *Client: Albany Port District Commission*

FHWA Bridge Preservation Expert Task Group. Mr. Hoyne is supporting the BPETG as the principal author for the communication plan, facilitation services for the development of the strategic plan, and co-author for several of the technical guides promoting preservation such as the Bridge Washing, the Removal and Replacement of Bridge Coatings and Deck Patching guides.

National Highway Institute. Mr. Hoyne is a certified instructor teaching three courses for NHI including 130053 Bridge Inspection Refresher, 134067 Inspection of Bridge Rehabilitation Projects, and 130091B Underwater Bridge Repair and Countermeasures. In addition, Mr. Hoyne is the subject matter expert for a new 6-hour web-based training (WBT) for construction inspectors and developed the technical content for the lessons.

West Virginia Department of Transportation. Mr. Hoyne was the principal investigator leading the team with the renewal of the WVDOT-DOH Contract Award Manual. This project is capturing the current state workflows for the prequalification, PS&E, procurement, and award processes including documentation of state and federal requirements, changes to the construction manual, and standard specifications.

National Cooperative Highway Research Program (NCHRP) Mr. Hoyne is a subject matter expert for the 23-05 Guidance for Training and Certification of Construction Inspectors for Transportation Infrastructure and for Synthesis 52-06 Agency Use of Quality Control Plans for Administering Quality Assurance Specifications.

Prior Firm Experience

AASHTO Subcommittee on Construction, Vice Chair, 2010-2017. Responsibilities included the development of the annual work plan, managing the committee functions in preparation and support of the annual meeting and providing support for the Chair and AASHTO committee liaison with committee matters.

Vermont Agency of Transportation (VTrans), Montpelier, VT. 2014-2017. Director, Construction & Materials Bureau. This position manages the Construction, Materials and Geotechnical Engineering Sections of VTrans. The Director has full responsibility for the leadership and management oversight of the Bureau, including budgetary, planning, policy, quality, and performance. The Bureau consists of a staff of 118 engineers and technicians and manages an annual budget of \$200M; it augments the workforce with consultant personal services contracts for construction inspection, plant inspectors and geotechnical engineering services.

Secured \$3M in funding for the Construction Management System replacement project, a project that spans estimating, proposal preparation, procurement, contract management, Civil Rights, and material management, which will replace the current client server versions with vendor hosted web-based applications.

Commissioned the new Materials Testing Laboratory with full AASHTO accreditation, deployed the Hamburg Wheel testing equipment, developed the recommendation to use polymer modified asphalt exclusively to counter premature wheel path erosion, and deployed a dashboard and reconciliation process to bring predictability and accountability to the material acceptance program.

Negotiated the global settlement for the \$60M Brattleboro Bridge to Nature DB Contract, resolving multiple complex claims, differing site conditions, extreme weather events, liquidated damages and the revised no excuse completion date.

Represented VTrans as the SME in a false claim investigation and provided expert testimony as VTrans 30(b)(6) witness for a complex differing site conditions claim.

Oversaw development of a procedure's manual for Construction SME's.

Vermont Agency of Transportation (VTrans), Montpelier, VT. 2006-2017. State Construction Engineer. This position manages the Construction Section, which provides contract management services for the VTrans capital improvement program of highway, bridge, and rail construction contracts. The Section consists of a staff of 75 engineers and technicians and manages an annual budget of \$180M. Projects must be delivered in accordance with the contract provisions, the Code of Federal Regulation, State and Federal laws.

Managed over 750 highway, bridge and rail construction contracts valued at \$1.75 billion.

Managed over 250 contractors claims to include complex contract terminations, global settlements, compensable delays and false claims.

Oversaw the renewal of the Construction Manual, and the creation of the Regional Process Manual.

Delivered the American Reinvestment and Recovery Act (ARRA) projects in accordance with Federal Audit requirements from 2009 through 2011.

Provided staff and expert support to the Tropical Storm Irene Recovery effort in 2011.

Served as Special Liaison between Unified Command and the Incident Commanders during Tropical Storm Irene Recovery.

Patrick Travers, E.I.T.

Project Manager
Construction Inspection Supervisor



PROPOSED PROJECT ASSIGNMENT
Municipal Project Manager

EDUCATION
BS/1976/Civil Engineering

REGISTRATION
1976/Engineer-in-Training/CT

YEARS WITH FIRM 6
TOTAL YEARS EXPERIENCE 49

COURSE WORK
OSHA 10-Hour Construction Safety & Health

Professional Profile

Mr. Travers is a seasoned construction industry professional with 49 years of experience as a project manager, project engineer, estimator, and construction inspector. He also owned his own construction consulting business in the past.

Mr. Travers has an extensive background in public infrastructure projects, where he has developed a solid reputation for managing construction inspection contracts and serving as a municipal project manager. For the past fourteen years, Mr. Travers has been involved, in a management capacity, in about 50 municipal infrastructure projects throughout the State of Vermont. Additionally, Mr. Travers has managed 17+ projects for Vermont State Parks and the Vermont Department of Fish and Wildlife. Project experience includes those involving road reconstruction, new sidewalks, streetscape improvements, recreation paths, bridge construction, large culvert replacements, underground utility construction, stormwater mitigation, slope stabilizations, and salt storage sheds.

Before his focus on public infrastructure projects, Mr. Travers was a successful project manager for general contractors in the commercial building arena as well as earthmoving contractors. Mr. Travers was directly responsible for managing the placement of over 250,000 cubic yards of concrete at a nuclear power plant and has extensive experience performing quantity takeoffs, developing cost estimates, and assembling bids.

Mr. Travers is highly organized and has developed a keen skill for directing multiple projects concurrently. Mr. Travers is also adept at moderating efficient and effective project meetings and can effectively coordinate efforts among all stakeholders involved in a project, such as owners, engineers, contractors, and the public. Personal strengths for Mr. Travers include strong verbal and written communication skills, public relations capabilities, and presentation skills.

Firm Experience

GPI. 02/20+. Project Manager & Construction Inspection Supervisor. In this role, Mr. Travers is responsible for procuring municipal project management and construction inspection contracts on public infrastructure projects, managing those contracts, assigning onsite resident engineers to each project, and overseeing the work performed by those resident engineers. Additionally, he ensures positive relationships are maintained with clients and that GPI's services are provided in adherence to contract requirements. Responsibilities also involve overseeing quality control of work products, monitoring project schedules, keenly observing project budgets, and generating work progress reports as required by state and federal funders.

Prior Firm Experience

Staff Sterling Management, Morrisville, VT 2007-2020. Project and Operations Manager. Responsibilities included marketing and assembling proposals for resident engineering, construction inspection, and project management assignments within the municipal infrastructure arena, then managing those contracts once procured. A total of 38 municipal infrastructure projects were procured and managed, along with another 17 State of Vermont projects. Construction projects ranged up to \$3M in size and involved street reconstruction, new sidewalks, recreation paths, waterlines, stormwater collection systems, sanitary sewers, bridges, new building construction, building rehabilitations, and historic preservation.

Vermont Small Business Development Center (SBDC), Randolph, VT. 1998-2007. Business Counselor. This position involved advising small business owners and entrepreneurs on how to start up and successfully manage a business in Vermont. One-on-one counseling was provided to clients and business planning classes were presented. Many clients were able to secure business financing via their business plans developed through SBDC counseling.

Patrick Travers Construction Consulting, Burlington, VT. 1993-1998. Owner/Operator. Primary services offered were construction estimating and project management for small commercial construction contractors in northern Vermont and the North Country of New York State. The company also offered owner representation services as well as the development and presentation of seminars on construction estimating and project management. The company was licensed to present the VT. Department of Health Lead Paint Essential Maintenance Practices workshop to landlords of residential rental properties. Some 2,000 landlords statewide were educated through dozens of workshops.

CS Architecture and Construction, Burlington, VT. 1990-1993. Construction Project Manager. This position was responsible for on-site commercial construction supervision, including manpower oversight, budget monitoring, schedule managing, and moderating project meetings. Projects included the Akwesasne Community Health Center for the Mohawk Nation, a 2,000-ft² medical facility that required the supervision of over 100 craft workers.

Simpson Construction, Inc., Rochester, VT. 1987-1989. Project Manager. This position was responsible for start-to-finish coordination of commercial construction projects for a general contractor that contracted up to \$20M of work per year. Responsibilities included contract negotiations, scheduling, budgeting, procuring subcontractors, moderating project meetings, coordinating with on-site project supervision, and maintaining client relationships. Most of the work was public school construction.

Spera Construction Company, Inc., Hartford, CT. 1986-1987. Construction Engineer and Estimator. Responsibilities included cost estimating, assembling bids, and managing commercial construction and public infrastructure projects for a heavy/highway, site work, and earth moving contractor. Clients included cities and towns in Connecticut and private developers.

Northeast Contracting Company, Inc., Middletown, CT. 1984-1986. Chief Engineer and Estimator. Responsibilities included calculating quantity takeoffs, determining construction costs, and assembling bids for an excavation and site work contractor that focused on commercial construction projects in central Connecticut. Responsibilities also involved layout and construction engineering on site as well as representing the company at project progress meetings.

Stone and Webster Engineering Corporation, Boston, MA. 1981-1984. Senior Field Engineer. Responsible for coordinating operations of the on-site batch plant to support concrete placements for the \$4B Millstone III Nuclear Power Plant in Waterford, CT. Over three years, more than 250,000-cubic³ yards of concrete meeting the requirements for nuclear facilities were placed in eight buildings that constituted the plant. Responsibilities also included oversight of unionized surveyors charged with layout work throughout the site.

Water Pollution Control Authority, Town of Waterford, CT. 1976-1981. Assistant Construction Engineer. This was an entry-level position that involved construction inspection of a new municipal sanitary sewer system being installed throughout the town. Responsibilities included ensuring the work followed drawings and specifications, tracking quantities of work completed, capturing progress photos, and approving contractor payment requisitions.

Volunteer Activity / Community Organizations

- President of Couples Field (Community Athletic Fields), Waitsfield, VT. 2019-Present
- Secretary, Board of Directors of Mad River Path, Waitsfield, VT. 2020-Present
- Board Member of Rootwork, Warren, VT. 2018-Present
- Founder and Coordinator of Mad River Valley Bocce League. 2019-Present
- Mad River Valley Rotary Club member. 2019-Present
- Shareholder, Mad River Glen Cooperative Ski Area, Fayston, VT. 1993-Present
- Past President, Canton Bicycle Club, Canton NY. 1993-1995
- Past member of Representative Town Meeting, Waterford, CT, 1970's



PROPOSED PROJECT ASSIGNMENT Municipal Project Manager

EDUCATION

2005/Vermont Local Roads Management Academy, Williston, VT
AS/1989-1991/Civil Engineering Technology/Vermont Technical College
AS/1987/Small Business Management/Dean Junior College, Franklin, MA

REGISTRATIONS/CERTIFICATIONS

ACI Concrete Field-Testing Technician, Grade 1 – 2025 (Anticipated)
NETTCP Concrete Inspector–2021
NETTCP Drilled Shaft Inspector – 2023
NETTCP Driven Pile Inspector–2021
NETTCP HMA Paving Inspector – 2020
NETTCP Soils & Aggregate Inspector - 2017
NHI Bridge Inspection Course
Nuclear Gauge and Radiation Safety
OSHA 10-Hour
VOSHA COVID-19 Workplace Protection

YEARS WITH FIRM 12
TOTAL YEARS EXPERIENCE 35

PROFESSIONAL AFFILIATIONS

American Public Works Association
American Traffic Safety Services Association
APWA member and NEAPWA Executive Board of Directors
VMHA member and board member
Vermont Work Zone Advisory Council member
ATSA Certified Traffic Control/Safety Trainer
Former President and Current Member of Creek Farm Homeowners Association

Professional Profile

Mr. Plumb has many years of experience in the engineering/construction industry. Projects have ranged from a few thousand dollars to multi-million-dollar projects. He has provided all project support, from being a laborer on a bridge project to project/construction management. Responsibilities have included design, estimating, budget management and labor, contract management, and construction inspection. He is proficient in Microsoft Office suite, AutoCAD, Micro Paver, Arc View, Manager Plus, Microsoft Project, Bluebeam Revu, and Adobe.

Mr. Plumb served as a Resident Engineer, Chief Inspector, Office Engineer, or Inspector on the projects listed below.

Resident Engineer. Mr. Plumb was responsible for the administration and inspection of the project, including ensuring the project was constructed according to the contract documents and that all materials conformed with the specifications. Duties included ensuring that all work was accomplished in accordance with all safety and environmental regulations.

Chief Inspector. Mr. Plumb was responsible for the administration, engineering, and inspection of the project. Duties included surveys, including initial project control, verifying the contractor's layout during construction, taking cross sections to determine pay quantities, monitoring field operations, verifying field measurements, coordinating sampling, traffic control, safety issues, public meetings, and general communication and documentation duties. As Chief Inspector, he also delegated duties to the inspector(s) and the Office Engineer.

Office Engineer. Mr. Plumb was responsible for the administrative work for the projects, which included project record compilation and documentation, entering Daily Work Reports in Site Manager, drafting change orders and written orders, monitoring certifications, sampling, and test results, setting up the field office utilities, maintaining concrete, weather, and rain gauge logs, and monitoring civil rights issues.

Inspector. Mr. Plumb was responsible for providing direct inspection of the performance of the work by the contractor and aided in the administration, engineering, and survey. He was responsible for inspection of the contractor's physical operations to ensure adherence to the specifications for each item, and documentation of the contractor's activities including measurement, calculation, and reporting of all pay items.

Project Experience

Greenman-Pedersen, Inc. 04/14+.

Winooski Main Street Revitalization Project, Chittenden County, VT. Resident Engineer. 06/24–12/25. This project was on Main Street in Winooski. Work performed

under this project included full-depth reconstruction of Main Street, reconstructing sidewalks, curbing, drives, replacing water mains, gas lines, underground utilities, constructing stormwater collection systems and sewer systems, placing new streetscape features, paving, pavement marking, and all associated highway related items. *Client – City of Winooski.*

South Burlington STP SGNL (53), Chittenden County, VT. 06/23–11/24. Resident Engineer. This project was on Dorset Street. Work performed under this project included the replacement of all traffic signals from Kennedy Drive to Interstate 89 off-ramp. Work included new mast arms, traffic signal systems, underground utilities, paving, pavement markings, crosswalks, and associated highway-related items. *Client: City of South Burlington, VT; Contact: Christine Gingras, 802.658.7961, cgingras@sbrul.com*

South Burlington STP MM19 (11), Chittenden County, VT. 06/23-11/24. Resident Engineer. This project was on Kenedy Drive in South Burlington. Work to be performed included the reconstruction of an existing stormwater detention pond and tying in an existing stormwater collection system. *Client: City of South Burlington, VT; Contact: Christine Gingras, 802.658.7961, cgingras@sbrul.com*

South Burlington STP MM19 (10), Chittenden County, VT. 10/22-06/23. Resident Engineer. This project was on Lindenwood Drive in the City of South Burlington. Work to be performed included the creation of a new stormwater detention pond adjacent to the existing recreation path, constructing a new stormwater collection system, tying an existing stormwater collection system into the new detention pond, and reconstructing Lindenwood Drive to improve drainage. *Client: City of South Burlington, VT; Contact: Christine Gingras, 802.658.7961, cgingras@sbrul.com*

Williston STP M 5500 (7) S, Chittenden County, VT. 06/22-10/23. Chief Inspector. GPI provided construction inspection services for this project, US Route 2 in Williston. Work under this project included highway reconstruction of US Route 2 and Industrial Avenue, including grading, drainage, subbase, paving, utilities, and other highway-related items. *Client: VTrans; Josh Hulett (RE)*

Richmond-Bolton STP 2924 (1); Chittenden County, VT. 06/22-06/24. Inspector. This project was on US Route 2 in the Towns of Richmond and Bolton. The work performed under this [project included coarse-milling bituminous pavement, concrete subsurface slab removal, subbase, paving, correcting superelevation deficiencies, pavement markings, guardrail improvements, drainage improvements, culvert replacements, signs, traffic signal improvements, and other related highway items. *Client: VTrans, Josh Hulett (RE), 802.279.2794, Josh.hulett@vermont.gov*

Burlington VTRY (51), Chittenden County, VT. 01/22-07/22. Chief Inspector. GPI provided inspection services for this project, the Vermont Rail System in the City of Burlington. Work performed under this project included replacing all tracks west of the mainline track, including partial realignment, installing a concrete jacking pad with direct fixation of the rails, removal, and replacement of the railyard electrical overhead and underground electrical services and associated work. *Client: VTrans; Contact: Ryan Sengebush (RE)*

South Burlington STP MM18 (3), Chittenden County, VT. 07/21-04/22. Resident Engineer. This project included replacing a bridge with a buried culvert structure, new pavement, new subbase, utilities, guardrail, signs, pavement markings, and a shared-use path. *Client: City of South Burlington, VT; Contact: Tom Dipietro, 802.658.7961, tdipietro@sbrul.com*

Hartford STP 0113 (59) and Hartford STP EH09 (15), Hartford, Windsor County, VT. 09/20-11/21. Chief Inspector. This project was in the Town of Hartford on Sykes Mountain Avenue. Work performed under this contract included constructing two roundabouts and approaches, curbing, sidewalks, drainage, traffic signs, pavement markings, and incidental items. *Client: Town of Hartford, VT*

Stowe Village Sidewalks/Main Street Utility Relocations, Stowe, Lamoille County, VT. 06/20-08/20. Resident Engineer. This project was in the Village of Stowe on Main Street. Work under this contract included the construction of sidewalks, curbing, and the relocation of utilities. *Client: Town of Stowe, VT*

South Burlington STP 5200 (17) Market Street. 05/18-12/20. Resident Engineer. GPI provides construction inspection services for this project on Market Street in South Burlington. Work performed under this project included paving, new subbase, new sewer and water lines, drainage modifications, new stormwater treatment ponds, sidewalks, curbing, pavement markings, lighting, landscaping, traffic signal modifications, and other related items on new horizontal and vertical geometry. *Client: City of South Burlington, VT; Contact: Justin Rabadoux, Public Works Director, 802.658.7961, jrabidoux@sbrul.com*

Thank You



About GPI: Founded in 1966, GPI is a leading engineering consulting firm that specializes in the innovative design and construction of transportation infrastructure and building projects. Our experts provide comprehensive engineering, design, planning and construction inspection services to a wide variety of government agencies, municipalities, institutions, industries, corporations, private organizations, and developers.

Our Expertise: Alternative Project Delivery, Bridges, Building Systems (MEPS), Civil/Site, Construction Inspection, Corrosion Protection, Environmental, Geospatial, Highways, Intelligent Transportation Systems, Marine, Planning & Consulting, Technology, Traffic & Safety, Water

