

A black and white photograph of a street scene. In the foreground, a sidewalk with a white dashed line runs from the bottom left towards the center. To the right of the sidewalk is a grassy area with several young trees planted in a row. Further right is a paved road with white lane markings. A utility pole stands on the far right. The background shows more trees and a cloudy sky.

D&K

Vermont Agency of Transportation

AT-THE-READY CONSULTANT
ENGINEERING SERVICES FOR
MUNICIPALITIES

2026 **MUNICIPAL
PROJECT
MANAGEMENT**

DuBois
&King^{inc.}

March 2, 2026

A. COVER LETTER





631350X
March 2, 2026

Nydia Lugo, Civil Engineer
Vermont Agency of Transportation
Highway Division - Municipal Assistance
219 North Main Street
Barre, VT 05641

Subject: Two-Tier (State-Local) Qualifications-Based Selection for At-The-Ready (ATR) Consultant Engineering Services for Municipalities 2026—Municipal Project Management Services

Dear Ms. Lugo and Members of the Selection Committee:

DuBois & King (D&K) is pleased to submit our Statement of Qualifications for Municipal Project Management Services in response to your Request for Qualifications for At-the-Ready (ATR) Consultant Engineering Services for Municipalities 2026. D&K offers significant experience working with VTrans on numerous ATR projects and many other municipal projects.

Since the program's inception in the 1990s, D&K has provided scoping, design, municipal project management, and/or construction phase services for more than 100 Municipal Assistance Section projects. D&K regularly leads projects that receive grants from the State of Vermont, FHWA, FEMA, FAA, and EPA throughout Vermont and New England.

We have selected qualified professionals with MPM and project management experience following the MAS program to serve this contract. D&K has a clear understanding of the requirements of federally funded, municipally managed transportation projects and the needs of municipal governments ranging in size from Vermont's smallest town to its largest city. Our staff maintain positive working relationships with Vermont's regional planning commissions and the regulatory community. We are committed to providing qualified, well-equipped, experienced, and responsible professionals who perform high-quality work on a consistent basis.

D&K's team of over 160 includes dedicated planning, design, and construction professionals who have provided services on hundreds of projects throughout Vermont during our 64-year history. Our project management and design experience includes roadway/highway reconstruction, paving and pavement management, bridges, intersections, culverts, dams, water/wastewater, sidewalks/pathways, historic facilities, utility reconstruction and replacement, stormwater, riverbank and slope stabilization, building construction, and site improvements.

We appreciate your consideration of our qualifications and look forward to continuing to support Vermont municipalities on state-funded and federally funded transportation and infrastructure improvement projects. We would be pleased to answer any questions you may have. Please do not hesitate to give me a call at 802-435-5059 or contact me via email at krobie@dubois-king.com.

Sincerely,

DuBois & King

Ken Robie, PE
Contract Manager/MPM

B. GENERAL FIRM INFORMATION



GENERAL FIRM INFORMATION



CONTACT INFORMATION

DUBOIS & KING, INC.
KEN ROBIE, PE
6 GREEN TREE DRIVE
SOUTH BURLINGTON, VT 05403
802-435-5059
KROBIE@DUBOIS-KING.COM

Established in 1962, DuBois & King (D&K) is a Vermont-based consulting engineering firm with 160 professional engineers, planners, designers, surveyors, technicians, environmental and permitting specialists, and support personnel. We have provided engineering, planning, and construction phase services for over 100 Municipal Assistance Section (MAS) projects. D&K understands that we will act as an extension of municipal staff and work cooperatively with regulatory agencies, VTrans, the Design Engineer, and Construction Inspector to develop and/or manage projects in a focused and efficient manner.

Each of our key staff members is experienced with projects administered through VTrans and has project management experience that will be applied to MAS projects.

The following pages detail the firm's areas of service that pertain to the Request for Qualifications (RFQ).



Management Personnel

Alan Gould, PE, Chief Executive Officer, Corporate Officer
Charles Goodling, PE, President, Corporate Officer
John Baumann, Sr. VP, Corporate Officer
Justin Vertichio, Chief Financial Officer, Corporate Officer
Jon Ashley, PE, Sr. VP, Public Works and Facilities Div., Corporate Officer
David Conger, PE, Sr. VP, Director, Transportation, Site & Land Div., Corporate Officer
Melissa Stephen, VP of Administration Div., Corporate Officer
Leslie Fillion, VP of Business Operations
Krystal Vertichio, Human Resources Manager
Kim Kraus, Marketing Manager
Andrew Hoak, PE, PG, Director, Environmental Services Div.
Guy Rouelle, CM, Director, Aviation Div.
Jennifer Ricciardi, Assistant Director, Aviation Div.
Tim Dall, PE, SE, LEED AP, Director, Structures Div.
Keith DeMoura, Director, Building Services Div.

UNDERSTANDING OF MPM RESPONSIBILITIES

Municipalities often need assistance in the management and administration of state- and federally funded projects, whether due to a shortage of staff, lack of expertise, or just lack of available time. MAS projects typically come with processes more complicated and time-consuming than a municipally funded project would normally entail. D&K has extensive experience in all areas of the VTrans Project Development Process, and we understand the challenges projects may face within that process.

The role of the Municipal Project Manager (MPM) can vary greatly from project to project depending on the municipality's needs, but the following duties could be required on any project:

PROJECT ADMINISTRATION

- Guide and support the municipality as it follows the VTrans Project Development Process and adheres to the Municipal Assistance Section (MAS) Local Projects Guidebook.
 - Coordinate all project activities and monitor all aspects of project development while acting as liaison between the municipality, VTrans, other consultants, and/or contractors as necessary.
 - Oversee adherence to all federal and state rules and regulations relative to developing and constructing a project.
 - Identify, obtain approval of, and implement procedures for facilitating development of the project.
 - Arrange for, participate in, and provide documentation of all project-related discussions, meetings or hearings.
 - Procure additional consultants by preparing Requests for Proposals and Scopes of Services for projects and participating on the selection team and documenting the selection process.
 - Perform all contract administration and oversee contract submissions, with attention to timeliness and budget.
- Review all project invoices for accuracy, completeness, and reasonableness.
 - » Facilitate municipal approval and payment.
 - » Request appropriate reimbursement from VTrans for services completed on a monthly basis.
 - Provide regular progress reports to the municipality and VTrans with invoices.
 - Review and monitor a master project schedule to coordinate all activities necessary for completing the project design, obtaining permits and approvals, relocating conflicting utilities, acquiring all rights-of-way, preparing construction bid documents, and completing construction and final documentation.
 - Keep a master project file, which will become the possession of the municipality once the project is complete.



PROJECT SCOPING & DESIGN

- Coordinate with design engineer regarding permit mandates, conditions, or stipulations.
- Obtain waivers of design criteria, if necessary.
- Review project plans and documents.
 - » Explore design options to improve constructability, reduce costs, or expedite construction.
- Assist with utility and/or railroad issues to comply with federal and state law.
- Review the project for compliance with all federal, state, and local laws, ordinances, regulations and permit requirements, including environmental permitting.
 - » Provide certification to VTrans attesting that all requirements have been met and all permits have been obtained.
- Secure certification that the design meets all applicable standards, codes, and requirements for design and public safety standards.
- Secure and submit to VTrans documentation by an engineer registered under the laws of the State of Vermont to practice structural or civil engineering attesting to the required structural capacity requirements for all bridges.
- Provide an engineer's certification of adherence of all traffic control devices per the Manual on Uniform Traffic Control Devices (MUTCD).
- Secure and submit a statement to VTrans as to which permits, agreements, and clearances have been secured and which ones are not applicable to the project.

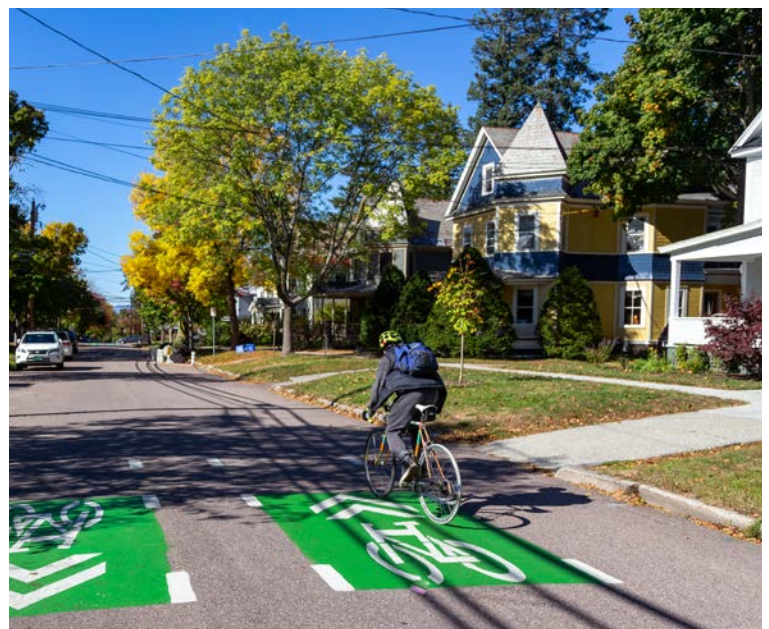
RIGHT-OF-WAY

- Coordinate and support right-of-way activities as they relate to the Uniform Relocation Assistance and Real Property Acquisition Act.
- Assist the municipality with property valuations, negotiations, and acquisitions as needed.
- Provide certification that all right-of-way issues have been resolved in accordance with applicable federal and state laws and regulations.

CONTRACTING & CONSTRUCTION

- Assist in preparing a bid package for construction that conforms with federal and state regulations.
- Once bids are received and opened, assist in determining the lowest responsible bid.
- Prepare contract for municipality with low bidder.
- Provide administration of the project during construction.
- Secure certification that the project was constructed as designed.

Every project has its challenges. D&K's role is to provide a confident, experienced, qualified project manager dedicated to driving the municipality's project to successful completion.

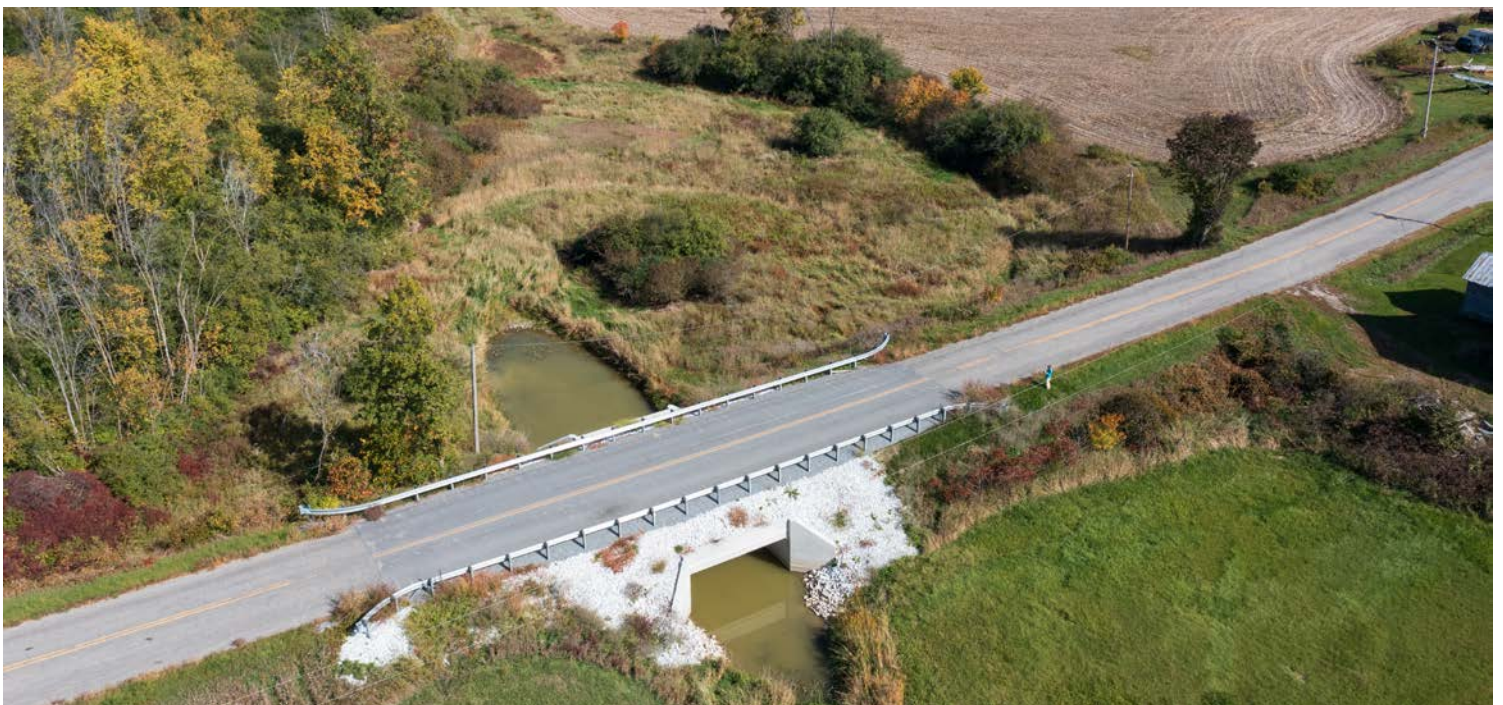
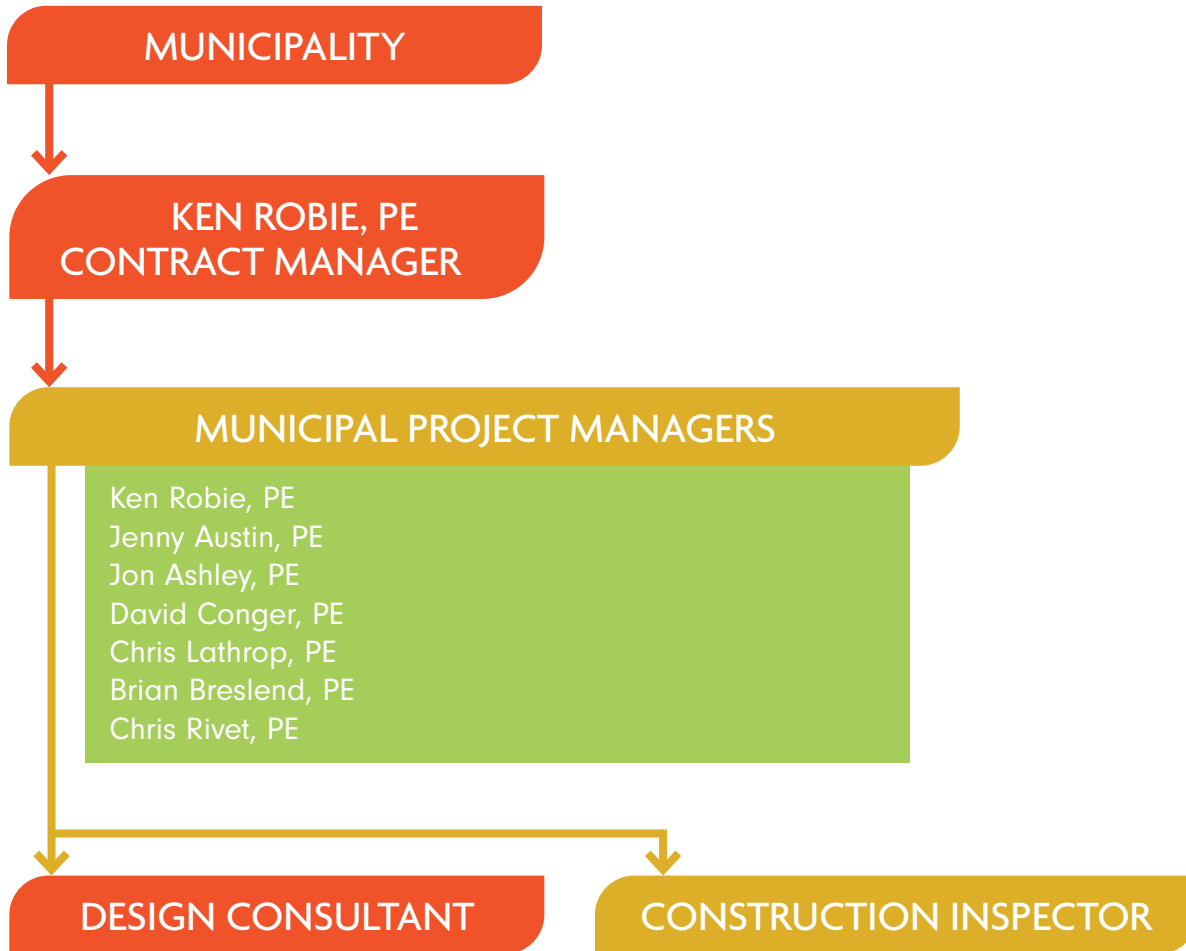


C. ORGANIZATIONAL CHART

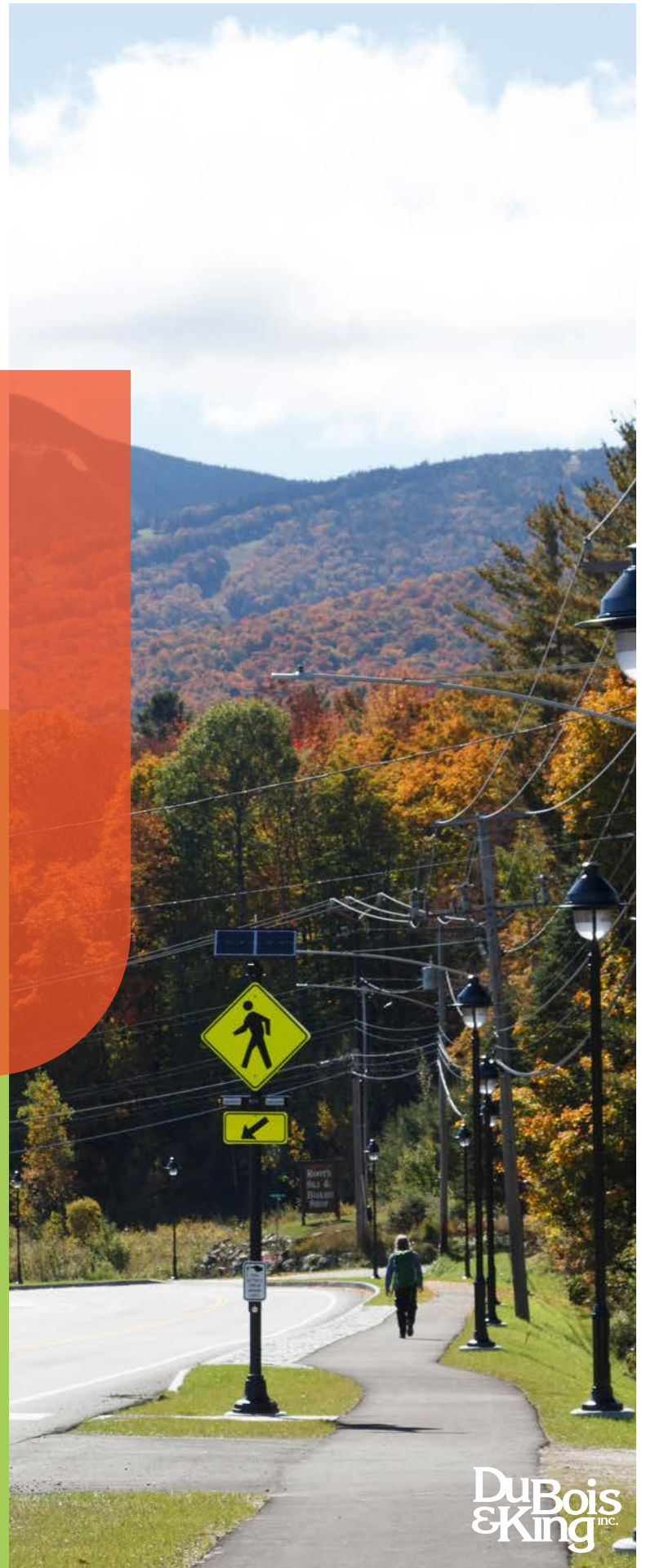


ORGANIZATIONAL CHART

Following are key staff available for municipal projects.



D. TECHNICAL CAPABILITY



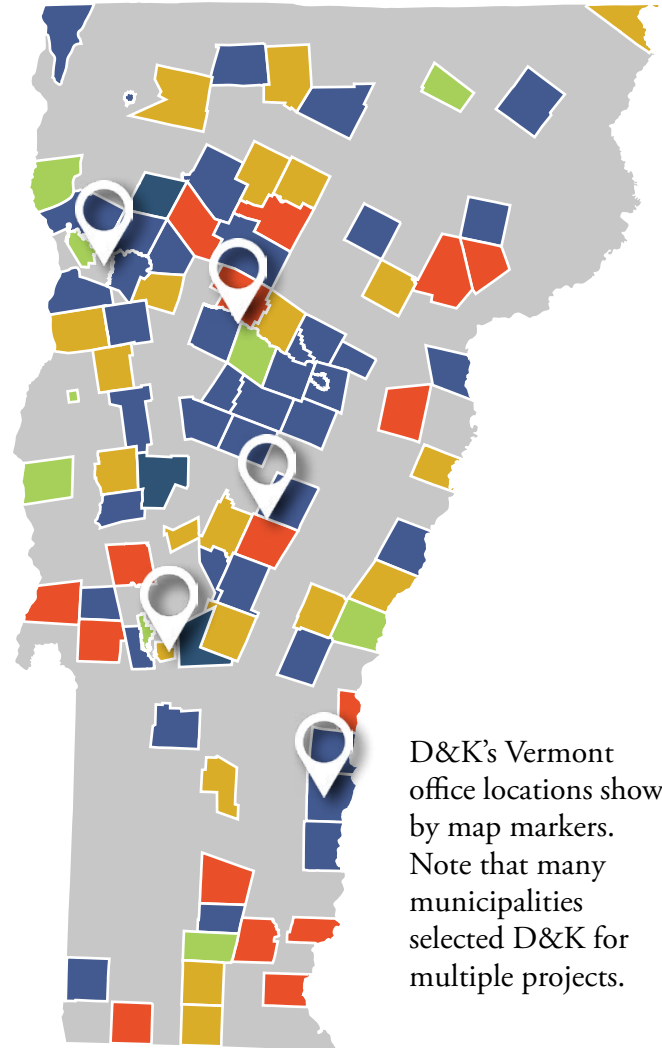
TECHNICAL CAPABILITY

QUALIFICATION AND EXPERIENCE OF THE FIRM

D&K has been providing MPM services to VTrans for many years, including dozens of successful projects administered through the Municipal Assistance Section (MAS) since the program's inception. Over this period, D&K has developed and expanded a team of qualified MPMs who have practical experience with the specific requirements of the MAS program. D&K has a clear understanding of the requirements and expectations for delivering construction inspection services on MAS projects.



D&K'S VTRANS MAS EXPERIENCE MAP



MUNICIPAL EXPERIENCE

- 100+ MAS projects in Vermont (see experience map)
- 50+ federally funded municipal projects in New Hampshire and Maine
- Municipal projects constitute the largest share of D&K's work



EXAMPLE PROJECTS

Following are summaries of relevant projects completed by D&K.

CHAMPLAIN PARKWAY, BURLINGTON

This is the largest MAS project designed to date. D&K is serving as an assistant MPM for the project that connects I-189, US 7, and Burlington's City Center, primarily located in the South End. 2026 Completion.

Key Staff: Ken Robie

- MAS Process
- Roadway/ Highway
- Bike/Ped
- Stormwater
- Lighting
- Utilities

Chapin Spencer, Director of Public Works
802.863.9094; cspencer@burlingtonvt.gov

KILLINGTON ROAD RECONSTRUCTION, KILLINGTON

D&K is MPM for the reconstruction of 2.7 miles of road from US 4 through Killington's commercial center to Killington Ski Resort. Funded through a RAISE grant, the project is on an accelerated schedule and includes a full-length shared-use path, sidewalks, lighting, bus stops, and landscaping. 2026 Completion.

Key Staff: Ken Robie

- MAS Process
- Roadway and Intersections
- Bike/Ped
- Stormwater and Utilities
- Lighting

Lisa Davis Lewis
Town Planner
802.422.3709; lisa.davis@killingtontown.com

SHARED-USE PATH AND SIDEWALK TOWN OF DANVILLE

D&K is MPM for the installation of 1,500 LF of shared-use path on Peacham Road connecting the village center with the Lamoille Valley Rail Trail and municipal recreation fields and 1,350 LF of sidewalk along Hill Street between US 2 and Highland Ave.

The Hill Street improvements include streetscape features and formalized parking within the Business Block, as well as stormwater management.

Key Staff: Ken Robie

- MAS Process
- Bike/Ped
- Stormwater and Utilities
- Lighting
- Streetscape/Parking

Michelle Leclerc
Town Clerk & Treasurer
802.684.3352
townclerk@danvillevt.gov

SLOPE STABILIZATION, BROWNINGTON

D&K was MPM for a project that addressed significant erosion, embankment and riverbank stability and stormwater issues on a town road. Completed in 2025.

Key Staff: Ken Robie

- MAS Funding
- Slope Protection
- Roadway
- Stormwater

Charyl Galipeau
Town Clerk
802.754.8401;
browningtontc@comcast.net

SOUTH STREET SIDEWALK, PROCTOR

D&K was MPM for a new five-ft concrete sidewalk beginning at the intersection of South Street (VT 3) and Grove Street and extending approximately 885 ft to the north along the west side of South Street and along the north side of the church driveway. Completed in 2025.

Key Staff: Jenny Austin

- MAS Funding
- Bike/Ped
- Stormwater

Judy Frazier, Town Manager; 802.459.3333 ext. 13; manager@proctorvermont.com

SIDEWALK, MORETOWN

D&K is MPM for a sidewalk along VT 100B that builds 1,300 feet of curb and sidewalk along the west side of VT 100B to connect the Moretown Memorial Library and Town Hall. 2026 Completion.

Key Staff: Ken Robie

- MAS Funding
- Pedestrian
- Stormwater

Cherilyn Brown
Town Clerk
802.882.8218; townclerk@moretownvt.net

KEY PERSONNEL

KEN ROBIE, PE, CONTRACT MANAGER/ MUNICIPAL PROJECT MANAGER

Ken has 37 years of experience in transportation engineering with the Vermont Agency of Transportation (VTrans). His background includes project management and design for all types of highway projects. He has experience supervising project teams, setting budgets and schedules, reviewing cost proposals and consultant scopes of work, and coordinating all aspects of project development involving VTrans, FHWA, other state and federal agencies, and the public. Ken is a highly experienced municipal project manager in Vermont.

JENNY AUSTIN, PE, MUNICIPAL PROJECT MANAGER

Jenny has 26 years of professional engineering experience, including planning, design, permitting, and municipal project management services for a wide range of transportation infrastructure projects for municipal, state, and federal clients. She is currently working as MPM for a shared-use path in Proctor, a sidewalk project in Proctor, a salt shed project in Vergennes, and she also recently assisted as MPM with Jon Ashley, PE, on a culvert project in Bridport. Jenny's recent experience includes construction administration services for a sidewalk project in Castleton, development of several scoping studies for bike/ped infrastructure with the Addison County Regional Planning Commission (ACRPC), and roadway/intersection projects in Bristol, Middlebury, and Weston. Jenny is also experienced in traffic engineering and GIS.

JON ASHLEY, PE, MUNICIPAL PROJECT MANAGER

Jon has 33 years of professional engineering experience, including the planning, management, design, and permitting of site/civil development projects, municipal infrastructure projects, road, sidewalk, and slope projects, and stormwater collection and treatment for municipal, state, local, and private clients. Jon is familiar with the VTrans MAS process from current and former salt and sand shed, culvert, sidewalk, roadway, and slope stabilization projects and maintains strong working relationships with regulatory officials. Jon recently provided MPM services for a culvert project in Bridport and a shared-use path project in Proctor.

DAVID CONGER, PE, MUNICIPAL PROJECT MANAGER

David has 33 years of experience in transportation and civil engineering for municipal, state, and federal clients. He is Director of D&K's Site and Land and Transportation Divisions. David has served as Project Manager on intersection and corridor scoping studies and on multimodal, roadway, streetscape, park, and site projects.

CHRIS LATHROP, PE, MUNICIPAL PROJECT MANAGER

Chris is a Senior Transportation Engineer and the Highway Department Manager at D&K with 30 years of experience in transportation improvement projects. His professional experience includes the preliminary and final design of a variety of transportation projects for the Vermont Agency of Transportation, New Hampshire Department of Transportation, and numerous municipalities.

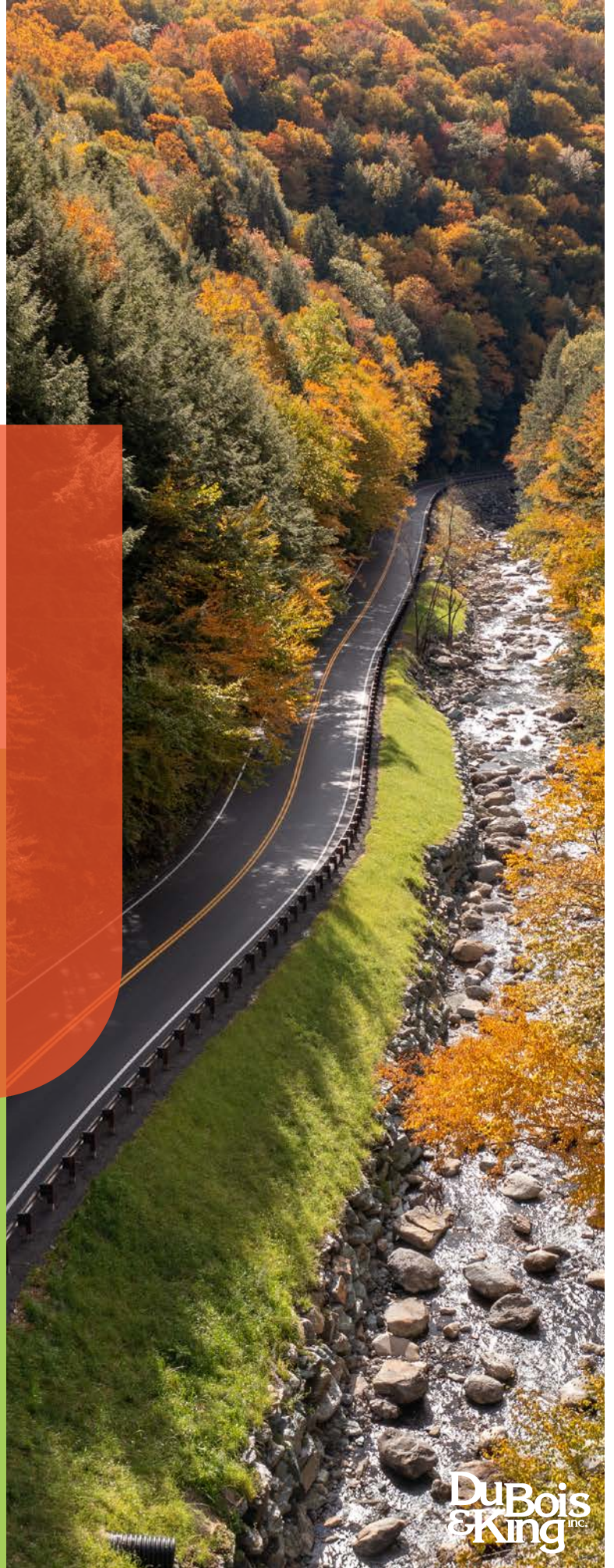
BRIAN BRESLEND, PE, MUNICIPAL PROJECT MANAGER

Brian is a civil engineer with 18 years of experience providing management, design, and permitting of transportation projects. Brian's project experience includes roadway, bridges and culverts, rail, sidewalk, pathways, and slope stabilization. He has provided services, including the preparation of alternatives analyses, preliminary and final design, cost estimation, plan development, field survey, and utility coordination.

CHRIS RIVET, PE, MUNICIPAL PROJECT MANAGER

Chris has 16 years of engineering experience, including as the project manager and lead engineer for sand and salt shed projects going through the VTrans MAS process. He has prepared designs, observed construction, and performed compliance requirements for projects that cover the current stormwater permitting programs. His design work includes a range of site development, renewable energy, and culvert projects.

F. RESUMES





KEN ROBIE, PE

Municipal Project Manager

Total Years of Experience: 37

Years with D&K: 7

EDUCATION

B.S., Civil Engineering, University of Vermont, 1989

REGISTRATIONS

Professional Engineer: VT 6524

Mr. Robie has 37 years of experience in transportation engineering, primarily with VTrans. His background includes project management and design for all types of highway projects. He has experience supervising project teams, setting budgets and schedules, reviewing cost proposals and consultant scopes of work, and coordinating all aspects of project development involving VTrans, the Federal Highway Administration, other state and federal agencies, Vermont municipalities and the general public.

CHAMPLAIN PARKWAY PROJECT, BURLINGTON, VT. Assisting the Municipal Project Manager for this major transportation connection to the city's Downtown District through the final phases of Act 250, NEPA Environmental Impact Analysis, contract plan development, and four years of construction. This project improves traffic circulation, alleviates motorist capacity overburdens, and improves vehicular and pedestrian safety in the South End of the city through a combination of new alignment limited access highway and complete street upgrades to the Pine Street corridor. Due to the complexity of the project and diversity of stakeholder input, the city required additional assistance and expertise in the day-to-day coordination with the extensive design and permitting team, contractors, utility companies, affected property owners, the public, VTrans, and the FHWA. This project followed the VTrans MAS process.

SYKES MOUNTAIN AVENUE/US 5 ROUNDABOUTS AND ROADWAY RECONSTRUCTION, STP 0113(59)S, HARTFORD, VT. Municipal Project Manager for final design and construction of two roundabouts at the intersection of US 5 and Sykes Mountain Avenue and the intersection of Sykes Mountain Avenue and Lehman Road. The project also includes roadway approach work, utility coordination, and stormwater management. This project followed the VTrans MAS process.

SLOPE STABILIZATION, CENTER ROAD, BROWNINGTON, VT. Municipal Project Manager for the design and construction of a project to mitigate the large amount of sediment flowing into the Willoughby River at two sites along Center Road. The project aimed to stabilize slopes and manage erosion, sediment discharge, and stormwater. This project followed the VTrans MAS process.

MAIN STREET (VT 100B) SIDEWALK, MORETOWN, VT. Municipal Project Manager for the design, permitting, property acquisition, and construction of 1,350 LF of curb and sidewalk through the village center. This project followed the VTrans MAS process.

KILLINGTON ROAD RECONSTRUCTION, KILLINGTON, VT. Municipal Project Manager for the design, permitting, property acquisition, and construction of 2.7 mi of Killington Road, leading from US 4 through Killington's commercial center to Killington Ski Resort. Funded through a RAISE grant, the project is on an accelerated schedule. Project includes reconstruction of the roadway, a full length shared-use path, sidewalks, lighting, bus stops, and landscaping. This project follows the VTrans MAS process.

SHARED-USE PATH, DANVILLE, VT. Municipal Project Manager for the design, permitting, property acquisition, and construction of a new shared-use path along Peacham Road between the Village Green and the Lamoille Valley Rail Trail, and new sidewalk on Hill Street providing pedestrian access to the Business Block. This project follows the VTrans MAS process.





JENNY AUSTIN, PE

Municipal Project Manager

Total Years of Experience: 26

Years with D&K: 14

EDUCATION

B.S., Civil Engineering, University of Vermont, 1999

REGISTRATIONS

Professional Engineer: VT 8551

Ms. Austin has 26 years of experience providing management and design for civil engineering projects.

Her experience focuses on traffic engineering to support future growth for public and private entities, as well as transportation planning and design for municipal, regional, and state projects. Jenny's projects have included Municipal Project Manager services on VTrans MAS projects and serves as project engineer for a pilot project to support the monitoring and performance evaluation of a road diet. She provides transportation master planning and has provided peer reviews of traffic impact studies. Jenny has experience with all phases of transportation design from scoping through contract plans and bid documents.

Jenny was the recipient of the Vermont Young Engineer of the Year for 2009.



MUNICIPAL PROJECT MANAGER BEAVER POND SHARED-USE PATH PROJECT, PROCTOR, VT.

MPM assisting the Town with the design phase of the shared-use path project. Responsibilities include preparation of a design engineering services RFP; serving on the selection committee meeting; coordinating meetings with the Path Committee, including engaging Doodle Polls to collect input from meeting attendees, reviewing design engineers' plans and invoices, and serving as a project liaison between VTrans and the design engineer.

SALT SHED REPLACEMENT, VERGENNES, VT. MPM to assist the city with the design phase of a project to replace the city's existing salt shed with a new structure. Responsibilities include the preparation of a design engineering services RFP; attending the selection committee meeting; coordinating meetings; reviewing the design engineers' plans and invoices; and serving as a liaison between VTrans and the design engineer. Assisted with compiling grant applications for additional VTrans funding. The city was awarded a Municipal Highway and Stormwater Mitigation grant through this process.

SALT SHED REPLACEMENT, LANDGROVE, VT. MPM to assist the Town with a project to relocate the Town's salt and sand storage out of a wetland.

BASIN HARBOR ROAD CULVERT REPLACEMENT, BRIDPORT, VT. MPM to assist the town with the removal of a 208-in by 57-ft squashed corrugated metal pipe and replacement with a 20-ft-wide by 9-ft-high by 43-ft-long precast concrete box culvert. Responsibilities include the review of design engineers' plans and invoices; review of invoices from design engineer and construction engineer; and serving as a liaison between the town, VTrans, design engineer, and construction engineer.

BICYCLE AND PEDESTRIAN SCOPING STUDY, WESTON, VT. Project Manager for a study that evaluated opportunities to improve the streetscape and encourage walking and cycling within the village's VT 100 corridor. The project received funds administered by the VTrans Municipal Assistance Bureau. Responsibilities included the review of existing conditions, crash data review, development and evaluation of alternatives with separate alternatives for both the northern and southern project segments, public meeting presentations, development and evaluation of an online survey, and the preparation of the scoping study report. Coordination with the steering committee and the Windham Regional Commission were valuable parts of this project.



JONATHAN ASHLEY, PE

Municipal Project Manager

Total Years of Experience: 33

Years with D&K: 10

EDUCATION

B.S., Environmental Engineering, Rensselaer Polytechnic Institute, 1992
M.S. Course, Advanced Hydrology, Kansas State University, 2001
M.S. Course, Physical and Chemical Hydrogeology, University of Massachusetts, Lowell, 1996
M.S. Courses, Wastewater Treatment and Engineering; Open Channel Hydraulics, University of New Haven, CT

REGISTRATIONS

Professional Engineer: VT 7350, NH 9709, NY 79818; 40-hour OSHA HAZWOPER Course; 8-hour OSHA HAZWOPER Course; Firefighter I Certification

Mr. Ashley has 33 years of environmental and civil engineering experience. The Director of the Public Works Division, Jon's experience includes planning, management, and design of water and sewer projects, hazardous waste and brownfield remediation, road and slope projects, stormwater collection and treatment, and site/civil development projects for municipal, state, local, and private clients. Jon has supported environmental documentation and permitting for infrastructure and site projects and maintains strong working relationships with regulatory officials.



MUNICIPAL PROJECT MANAGER, BASIN HARBOR ROAD CULVERT REPLACEMENT, BRIDPORT, VT. Municipal Project Manager for the replacement of a deteriorating corrugated metal pipe culvert that carries the West Branch of Dead Creek and drains to Otter Creek. The culvert was replaced with a precast concrete box culvert. Responsibilities included managing the selection of the consultant and the design process through all phases and preparing an updated hydraulic analysis of the culvert sizing. Assisted the Town and design engineer with strategies to streamline the project schedule to allow the culvert replacement to be constructed prior to upcoming planned utility poles relocation in this area. Responsibilities also included supporting the Town through the selection of the contractor and construction of the replacement culvert. Assisted the Town with grant applications for additional Transportation Alternatives Program funding. The project was developed in accordance with the VTrans Municipal Assistance Bureau process and completed in 2021.

MUNICIPAL PROJECT MANAGER, BEAVER POND SHARED-USE PATH PROJECT, PROCTOR, VT. Municipal Project Manager assisting the town with the design phase of a shared-use bicycle and pedestrian path project planned to connect the village center with a recreational, rural area on the edge of town. Responsibilities include preparation of a design engineering services RFP; guiding the selection committee review process; coordinating meetings with the Path Committee; review of design engineers' plans and invoices; guiding and assisting the town in easement negotiations with involved landowners; and serving as a project liaison between VTrans and the design engineer.

SALT AND SAND SHED, VERGENNES, VT. Municipal Project Manager/Senior Engineer for project management services to construct a municipal salt shed. The city project funding from the FHWA through VTrans, and the project is being developed in accordance with the VTrans MAS process. As MPM, responsibilities include active engagement in property owner meetings and negotiations (if applicable), and public informational meetings; writing requests for qualifications and scopes of services for project design and construction phase consultants; design review; maintenance of the project schedule; review of invoices and pay requests and tracking project financials; serving as liaison between VTrans and the city; and administration of the bid and construction phases.

CREEK ROAD STREETScape PLANNING, DESIGN, AND RECONSTRUCTION, ADDISON COUNTY TRANSIT RESOURCES, MIDDLEBURY, VT. Senior Project Manager for the design to reconstruct a town road, including stormwater drainage improvements along the roadway and sidewalk. Additional project elements included improvements to high school athletic fields and facilities and planning for Addison County Transit Resources (ACTR) headquarters. The project was funded through various sources, including VTrans MAS; the town, school, and boosters; and the Federal Highway Administration (FHWA). Designed sidewalks to integrate with ACTR facility, new concrete bleachers for the lacrosse and soccer field, the Trail Around Middlebury, new town parks and recreation building, as well as existing residences and commercial properties. Provided stormwater permitting assistance, gravel wetland design, and bid and construction administration assistance for the sidewalk.



DAVID CONGER, PE

Municipal Project Manager

Total Years of Experience: 33

Years with D&K: 18

EDUCATION

B.S., Civil Engineering, University of Vermont, 1992

REGISTRATIONS

Professional Engineer: VT 7689, NH 17489, ME 18121; NCEES: 20-744-87

Mr. Conger has 33 years of experience as a Civil Engineer and Project Manager for municipal, private, and federal clients.

The Director of D&K's Site and Land and Transportation Divisions, David's experience includes management of multidisciplinary design teams for significant term contracts and large-scale projects. His technical expertise includes stormwater utility, design, MS4 permits, an understanding of Total Maximum Daily Loads, and other engineering functions specific to the design of alternatives for stormwater management, drainage, and water quality systems. David is thoroughly familiar with the FEMA HMGP program, USACE standards, environmental permitting, and NPDES stormwater program compliance.



CONSTRUCTION PHASE SERVICES, US 7 SEGMENT 6, BRANDON, VT. Manager of Construction Phase Services for full-time construction administration and observation for a \$20M roadway improvement project in the heart of downtown Brandon. The project included reconstruction of more than a mile-long section of US 7 roadway, all associated intersections, and two parks. D&K provided as many as six full-time construction inspectors concurrently over three years to support the improvements. The project was developed through the VTrans MAS.

NESHOBE RIVER OVERFLOW CULVERT, BRANDON, VT. Project Manager for design of an overflow culvert to mitigate flooding of US 7 in downtown Brandon under a Hazard Grant Mitigation Program (HGMP) grant. Significant storm events cause overtopping of the roadway by the Neshobe River. A preliminary feasibility study was advanced with updated hydraulics and inlet control details to provide a three-sided precast structure that prevents flooding at the 100-year design event. The design integrated the hydraulic requirements with a tight urban site to develop a geometry and construction details protecting adjacent structures and utilities while limiting ledge removal and property acquisition. The project was fast-tracked with permitting, design, and several grant modifications to initiate construction in advance of proposed highway work in the town. Construction management services were continued for submittal and field condition reviews, as well as near full time construction inspection services. D&K developed processes to keep client and public apprised of the project status through daily logs, materials measurement, pay requisition review and biweekly contractor meetings.

WEST SEMINARY STREET PRIVATE NESHOBE RIVER BRIDGE, BRANDON, VT. Project Manager responsible for assisting a landowner to replace a private bridge, severely damaged by a storm. The existing 20-ft span bridge was inadequate for Q25 storm events and required HEC-RAS evaluation of the upstream and downstream channel to address extreme storm events. This evaluation incorporated review for both hydraulic and geometric constraints posed by a concurrent flood overflow culvert structure being managed for the town. Assisted the owner with Stream Alteration permitting to replace the existing structure with a longer precast voided slab span, including modification of the upstream and downstream channel with stone retaining walls. The modified bridge and stream channel accommodate Q25 storm flows.

BICYCLE AND PEDESTRIAN IMPROVEMENTS, SAFE ROUTES TO SCHOOL, WEST RUTLAND, VT. Project Manager for the development of a safe and attractive walking and biking network connecting the residential neighborhood with the K-12 West Rutland School and nearby community recreational facilities. Based on the school's active travel plan, D&K developed conceptual plans for the bike/walk network and prepared a project scoping report. The study assisted the Town in successfully securing a major competitive construction funding grant. D&K developed construction plans to bring the plan into reality. The project encompassed a wide range of contexts and conditions, from narrow urban streets to major thoroughfares with higher traffic volumes, shared streets, sidewalks, and separated shared-use pathways.



CHRIS LATHROP, PE

Municipal Project Manager

Total Years of Experience: 30

Years with D&K: 20

EDUCATION

B.S., Civil Engineering, Norwich University, 1995

A.S., Civil Engineering, Vermont Technical College, 1992

REGISTRATIONS

Professional Engineer: VT 8769, NH 10682

Mr. Lathrop is a Senior Transportation Engineer and the Highway Department Manager at D&K with 20 years of experience in transportation improvement projects. His professional experience includes the preliminary and final design of a variety of transportation projects for the Vermont Agency of Transportation, New Hampshire Department of Transportation, and numerous municipalities.

Chris's roadway experience includes the reconstruction of local roadways and state highways, resurfacing and safety improvements for interstate highways, intersection improvements, pathways, and sidewalks. He has been involved in all phases of project development from project conception through construction, including design, public participation, contract documents, utility coordination, traffic management plans, bidding, and construction administration and inspection.



ROADWAY RECONSTRUCTION AND MULTIMODAL FACILITIES, SOUTH HERO, VT. Municipal Project Manager for a project that reconstructs three miles of roadway and reconfigures the road to accommodate bike lanes. Specific responsibilities included advising the Town regarding the MAS Project Development Process, preparing a request for proposals, soliciting engineering proposals for design of the project, reviewing the engineering consultant's progress as the design is developed, acting on behalf of the Town for right of way negotiations, and facilitating public meetings and discussions.

INTERSECTION OF US 5 AND VT 131 TRAFFIC SIGNAL, WEATHERSFIELD, VT. Project Manager for the replacement of the existing outdated traffic signal system. The project also incorporated pedestrian signals and crosswalk improvements to improve mobility and safety while upgrading the existing obsolete and dysfunctional traffic signal equipment. The project included the replacement of the entire traffic signal system including the traffic controller, signal heads, support structures, emergency preemption and vehicle detection systems. The project also replaced the roadway signage within the intersection and approaches.

SMUGGLERS' NOTCH CHICANES, STOWE-CAMBRIDGE, VT. Senior Engineer responsible for oversight of the chicane layout design, material recommendations, and cost estimating. Participated in a district garage test run of in-field layout and the layout and installation of the experimental chicanes.

COLCHESTER AVE SIDEPATH, CITY OF BURLINGTON, VT. Project Manager for reconstruction and widening of 2,100 ft of sidepath. Responsible for coordination with the City of Burlington and VTrans for utility relocation, ROW plans, and overall technical design of the project. Project also consisted of reconstructing pedestrian ramps to ADA compliance.

BETHEL MOUNTAIN ROAD SLOPE STABILIZATION, ROCHESTER, VT. Provided quality review and support for horizontal/vertical geometry, superelevation improvements. Assisted with technical coordination between disciplines and provided overall QA/QC review of plans. *ACEC-VT Grand Award Winner*

CRESCENT CONNECTOR, ESSEX JUNCTION, VT. Senior Engineer for a FHWA-funded roadway project that provided a bypass around the Five Corners intersection. The \$8M project included coordination of five traffic signals and five railroad crossings. Responsible for senior level design oversight. The project followed the VTrans MAS process. *ACEC-VT Merit Award Winner*

GREAT STREETS BTV, BURLINGTON, VT. Senior Transportation Engineer for the design implementation of reenvisioned downtown Burlington into a vibrant, walkable, and sustainable urban center. Assisted and vetted team design standards established for the downtown core and the developed design documents to meet these goals with the reconstruction of two blocks of Main Street and City Hall Park. Responsible for quality assurance reviews of deliverables and quantity guidance.



BRIAN BRESLEND, PE

Municipal Project Manager

Total Years of Experience: 18

Years with D&K: 18

EDUCATION

B.S., Civil Engineering, University of Vermont, 2007

REGISTRATIONS

Professional Engineer: VT 79076, NH 15117, ME 14272
NHDOT LPA Certification: 2043

Mr. Breslend is a Civil Engineer with 18 years of experience providing management and design of transportation projects. Brian's project experience includes roadway, bridges and culverts, rail, sidewalk, pathways, and slope stabilization. He provides a range of services, including the preparation of alternatives analyses, preliminary and final design, quantity calculations, cost estimation, plan development, field survey, and utility coordination.

PARK & RIDE, FAIR HAVEN, VT. Project Manager for redesign of the Park-and-Ride and improvements to lighting at the adjacent Village Green/Park. The Park-and-Ride project is adjacent to VT 22A and the Village Green. Renovations included the reconfiguration of parking with bulb-outs and pedestrian walkways, Level 2 and Level 1 EV charging, and a network of greenspace, including retrofitted bioretention facilities for stormwater management.

BETHEL MOUNTAIN ROAD SLOPE STABILIZATION, ROCHESTER, VT. Project Manager and Manager of Construction Phase Services for the evaluation, survey, permitting, and final design of a \$2M 2,800-LF emergency roadway repair project. The project implemented long-term repairs to sections of an embankment that failed during a heavy spring rainfall and snowmelt event that closed the road. Improvements included upgraded drainage systems and structures, slope repair, and roadway reconstruction and minor realignment. The road is a valuable mountain connector road between VT 100 and VT 12 that required rapid reopening and stabilization of the roadway, which dictated a significantly compressed schedule. The project was managed by the Town of Rochester and received FHWA-ER funding. Led day-to-day development of D&K's services, provided senior-level engineering, and coordinated with the client and state and federal regulators. *ACEC-VT Grand Award Winner.*

BROOK ROAD SITE ASSESSMENT, PLAINFIELD, VT. Project Manager/Senior Engineer for a study that evaluated 21 damaged sites along a four-mile-long flood-prone section of roadway. Responsible to lead report production, manage schedules and budgets, and provide field evaluation of bridges, embankments, and roadways. D&K's assessment focused on the condition of completed repairs and recommends practical options to maintain and improve the roadway, including the possibility of relocating the roadway further from Great Brook.

CRESCENT CONNECTOR ROAD, ESSEX JUNCTION, VT. Transportation Engineer for an \$8M FHWA-funded Crescent Connector roadway, an 1,800 LF bypass around the Five Corners intersection. The project included coordination of five traffic signals and five railroad crossings. Provided redesign review and finalized details. The project followed the VTrans MAS process. *ACEC-VT Merit Award Winner*

LONGLEY BRIDGE ROAD BANK STABILIZATION, MONTGOMERY, VT. Project Manager for study, design, permitting, bid phase and construction assistance services for the stabilization of approximately 500 ft of the Trout River stream bank adjacent to Longley Bridge Road. The project implemented a combination of hard (stone) and soft (wood) stabilization measures into the design. Led day-to-day development of D&K's services, provided senior-level engineering, and coordinated with the client.

MAIN STREET SIDEWALK, VERGENNES, VT. Project Manager for a 500-ft-long concrete sidewalk project. Work performed under this contract included the construction of a Portland cement concrete sidewalk, concrete curbing, paving driveway aprons, pavement markings, pedestrian signing, right-of-way plans, permitting and other incidental items.





CHRIS RIVET, PE

Municipal Project Manager

Total Years of Experience: 16

Years with D&K: 8

EDUCATION

B.S., Civil Engineering, Norwich University, 2010

REGISTRATIONS

Professional Engineer: VT 109341; Nuclear Moisture/Density Equipment: Active; 40-Hour OSHA HAZWOPER Certification; 10-Hour OSHA Construction; Vermont Natural Shoreland Erosion Control and Restoration Training (SECR), VT ANR

AFFILIATIONS

Former President, Vermont Society of Professional Engineers
VBM Rising Star, 2019

Mr. Rivet has 16 years of stormwater engineering experience. His project expertise includes the design, construction, and compliance inspection for site development projects throughout Vermont. Chris has served as the project manager and lead engineer for sand and salt shed projects going through the VTrans MAS process. He has prepared designs, observed construction, and performed compliance requirements for projects that cover the current stormwater permitting programs. His design work includes a range of site development, renewable energy, and culvert projects.

CRESCENT CONNECTOR, ESSEX JUNCTION, VT. Project Engineer responsible for revising the stormwater treatment system based on design revisions to the \$8M FHWA-funded Crescent Connector roadway, an 1,800-LF bypass around the Five Corners intersection. The project included the use of porous pavement in parking areas to promote groundwater recharge. The design included an underground sand filter that was used to treat stormwater runoff due to extremely limited space and flat grades within the project area. Responsible for the preparation and submission of the stormwater discharge permit amendment application. *ACEC-VT Merit Award Winner*

SALT/SAND SHED REPLACEMENTS, VTRANS MAS, VARIOUS LOCATIONS. Project Manager/Lead Engineer for the design of a new salt/sand storage sheds. Generally responsible to lead engineering, design, and permitting for new salt/sand sheds for each municipality:

- Tinmouth
- Burke
- Weathersfield
- Pittsfield
- Newark
- Springfield
- Bridgewater
- Wardsboro

ONE TAYLOR STREET MULTI-MODAL TRANSIT CENTER, MONTPELIER, VT. Project Engineer for a State of Vermont Visitors Center and Transit Facility to support public bus operations. The Center includes traveler and parking accommodations, green space, residential units, and an extension of the Montpelier Bike Path. Responsible for revising the stormwater discharge permit due to design changes made during the construction of the project. Performed observation and documentation of contaminated soil management and disposal and inspection of erosion prevention and sediment control measures implemented to prevent off-site migration of contaminated soils.

STORMWATER IMPROVEMENTS, MAIN STREET TO MOREY, FAIRLEE, VT. Project Manager to successfully implement green stormwater treatment practices and enhance aesthetics along US 5. There are three project locations: in front of the Lakeside Automotive, Samurai Soul Food, and Country Supply businesses. Services provided include attending stakeholder meetings, providing a topographic survey, base mapping and resources, preliminary plans, permitting, right-of-way plans and acquisition process, contract plans, opinion of probable construction costs, assistance with the bidding and award process, and construction services. The town utilized Municipal Mitigation Grant funding through the VTrans MAS to complete the design and implementation of green stormwater infrastructure.

PARKING AND STORMWATER IMPROVEMENTS, CAMBRIDGE AND STOWE, VT. Project Engineer responsible to complete stormwater benefits calculations for a project that reconfigures parking, reduces impervious surfaces, and improves drainage along a narrow state highway providing access to popular trailheads.

