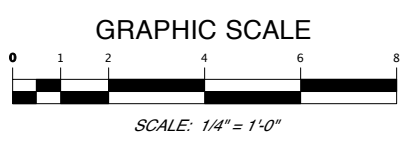
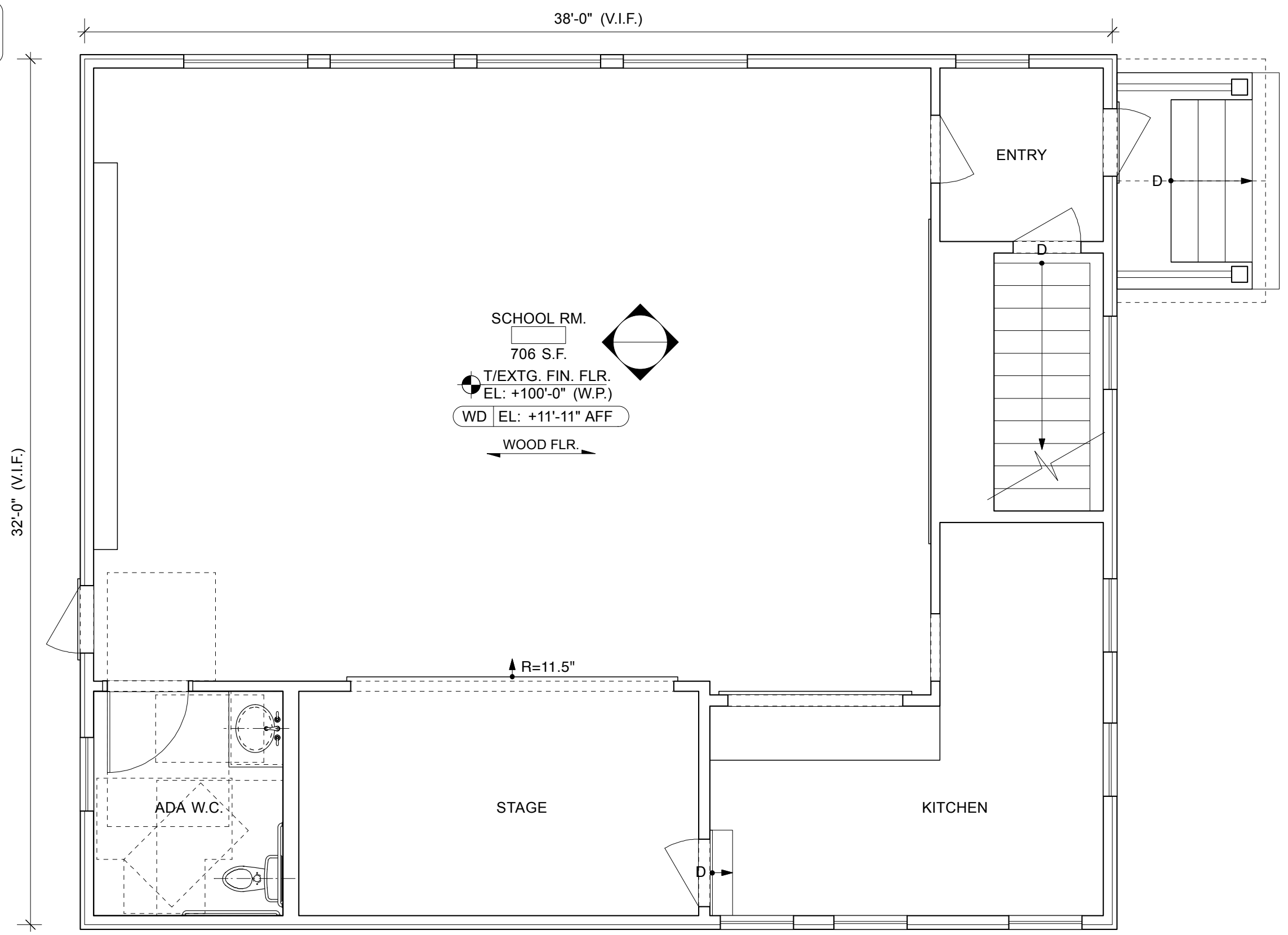


-- PRELIMINARY --
NOT FOR CONSTRUCTION



<p>SMITH & VANSANT architects 15 River Road Norwich, Vermont (802) 649-5515 smithandvansant.com © 2013 SMITH & VANSANT ARCHITECTS PC</p>	Sheet Issued:		
	01	4/26/13	SD-01
	No.	Date	Issue

Root District Schoolhouse

Existing Conditions Plan w/ ADA W.C.

SVA Project No.:	
1232	
Drawn By:	Draft Date:
SVA	4/26/13

SD-01