

# Errata Sheet

March 2013

Analysis of Impediments to Fair Housing Choice (AI)  
State of Vermont

---

This issuance represents a correction to the final edition of the AI dated April 2012. Page 26 of that document and subsequent maps incorrectly identify areas of racial and/or ethnic concentration. The following data and maps identify the correct areas of racial and/or ethnic concentration based on 2010 data and the same definitions that appear in the document, as follows:

Based on the 2010 Census, Vermont's population was 95.3% White. Population growth throughout the State has been most rapid among non-White and Hispanic residents. In order to highlight the State's increasing minority population, the State has defined an area of racial or ethnic concentration as a census tract with more than double the statewide proportion of each minority group.

Blacks accounted for 1% of the overall population in 2010. Therefore, based on the State's definition, an area of racial concentration of Blacks would include any census tract where the percentage of Black residents is 2% or higher. There are 18 census tracts that meet this criterion. Of these tracts, 10 are located in the City of Burlington and eight are located in the remainder of the State.

Asian residents represent 1.3% of the total State population. An area of racial concentration of Asian residents would include any census tract where the percentage of Asians is 2.6% or higher. There are 20 census tracts meeting this criterion, 14 of which are located in the State exclusive of the City of Burlington. The remaining six Asian-concentrated tracts are in Burlington.

American Indian/Alaska Native (AIAN) residents represent 0.4% of population in the State. An area of racial concentration of AIAN residents would include any census tract where the percentage of AIAN residents is 0.8% or higher. There are 10 census tracts that meet this criterion. One is within Burlington; nine are in the remainder of the State.

Hispanic residents represent 1.5% of the total State population. An area of ethnic concentration would include any census tract where the percentage of Hispanics is 3% or higher. There are seven census tracts that meet this criterion. Five of these tracts are located in Burlington, and the remaining two are in other areas of the State.

Some areas of concentration overlap; for instance, Tract 9608 in Addison County qualifies as an area of Black, Asian, *and* Hispanic concentration. All told, accounting for these overlaps, there are 35 areas of racial and/or ethnic concentration across Vermont, 10 of which are in Burlington. Areas of minority and/or ethnic concentration in the State, exclusive of the City of Burlington, include eight tracts of Black concentration, six tracts of Asian concentration, nine tracts of American Indian/Alaska Native concentration, and two tracts of Hispanic concentration.

The following table lists racially and/or ethnically concentrated census tracts.

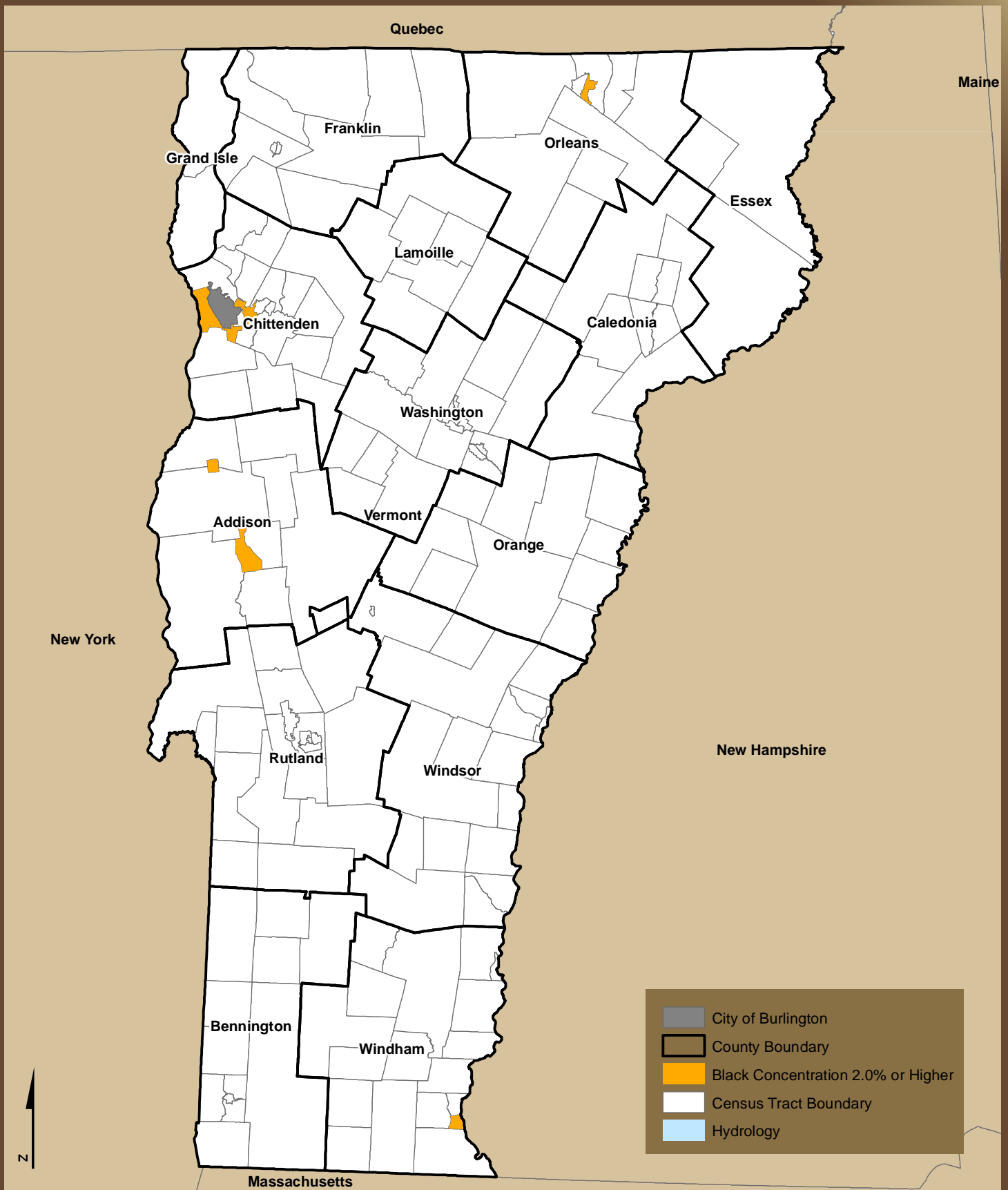
COUNTY	Tract	Total	% White	% Black	% AIAN	% Asian	% Hispanic
Addison	9603	2,588	92.8	3	0.3	0.9	2.6
Addison	9608	4,539	85.3	2	0.2	7	4.3
Caledonia	9573	3,335	94.1	0.9	0.4	2.7	1.4
Chittenden	1*	4,580	86.2	4.7	0.3	5.4	1.9
Chittenden	2*	5,625	92.6	2.6	0.1	2.5	1.8
Chittenden	3*	3,399	77.2	9.9	0.4	8	2.5
Chittenden	4*	3,148	80.9	7.1	0.5	6.8	3.4
Chittenden	5*	4,211	92.5	2.1	0.4	2.3	3
Chittenden	6*	5,169	91.3	2.6	0.2	2.8	2.6
Chittenden	9*	2,839	93.9	2	0.3	1.5	1.9
Chittenden	10*	2,371	83.7	7.9	1.1	2.7	3.2
Chittenden	11*	2,421	90.3	3.9	0.3	2	3.1
Chittenden	22	8,314	92.8	1.8	0.3	3.2	1.7
Chittenden	24	3,241	79.9	8	0.5	6.8	1.9
Chittenden	25	4,026	84.9	6	0.2	5.6	2.5
Chittenden	26.01	5,188	91.4	1.7	0.5	4	1.9
Chittenden	26.02	4,088	91.7	1.6	0.3	3.8	2.2
Chittenden	27.01	5,376	93.6	1.6	0.1	3	1.3
Chittenden	33.01	3,562	89.2	1	0.1	7.6	1.6
Chittenden	33.04	5,728	89.7	2.6	0.2	5.2	1.9
Chittenden	36	4,058	89.4	1.3	0.3	5.9	2
Chittenden	39*	6,200	91.5	2	0.1	2.8	3.7
Chittenden	40.02	4,556	91.6	2.5	0.2	3.5	1.9
Essex	9502	1,222	97	0.4	0.9	0.3	0.9
Franklin	101	7,130	94.9	0.3	1.7	0.3	0.7
Franklin	102	4,473	96.2	0.4	0.9	0.4	1.2
Franklin	103	3,509	95.6	0.4	0.8	0.3	1.1
Franklin	105	6,427	93.4	0.3	2.5	0.5	1
Franklin	107	3,451	93.6	1.2	1.4	0.8	1.4
Grand Isle	201	3,272	93.6	0.2	1.3	0.2	1.2
Orleans	9514	2,027	92.8	2.4	1	0.6	2.2
Orleans	9515	2,562	96.1	0.7	0.8	0.5	1.5
Washington	9547	1,505	93.1	1.5	0.1	3.1	2.2
Windham	9685	5,807	90.9	2.6	0.4	2.2	3.1
Windham	9686	2,296	91.1	1.4	0.1	4.1	2.9

\* In Burlington

Source: 2010 Census SF-1

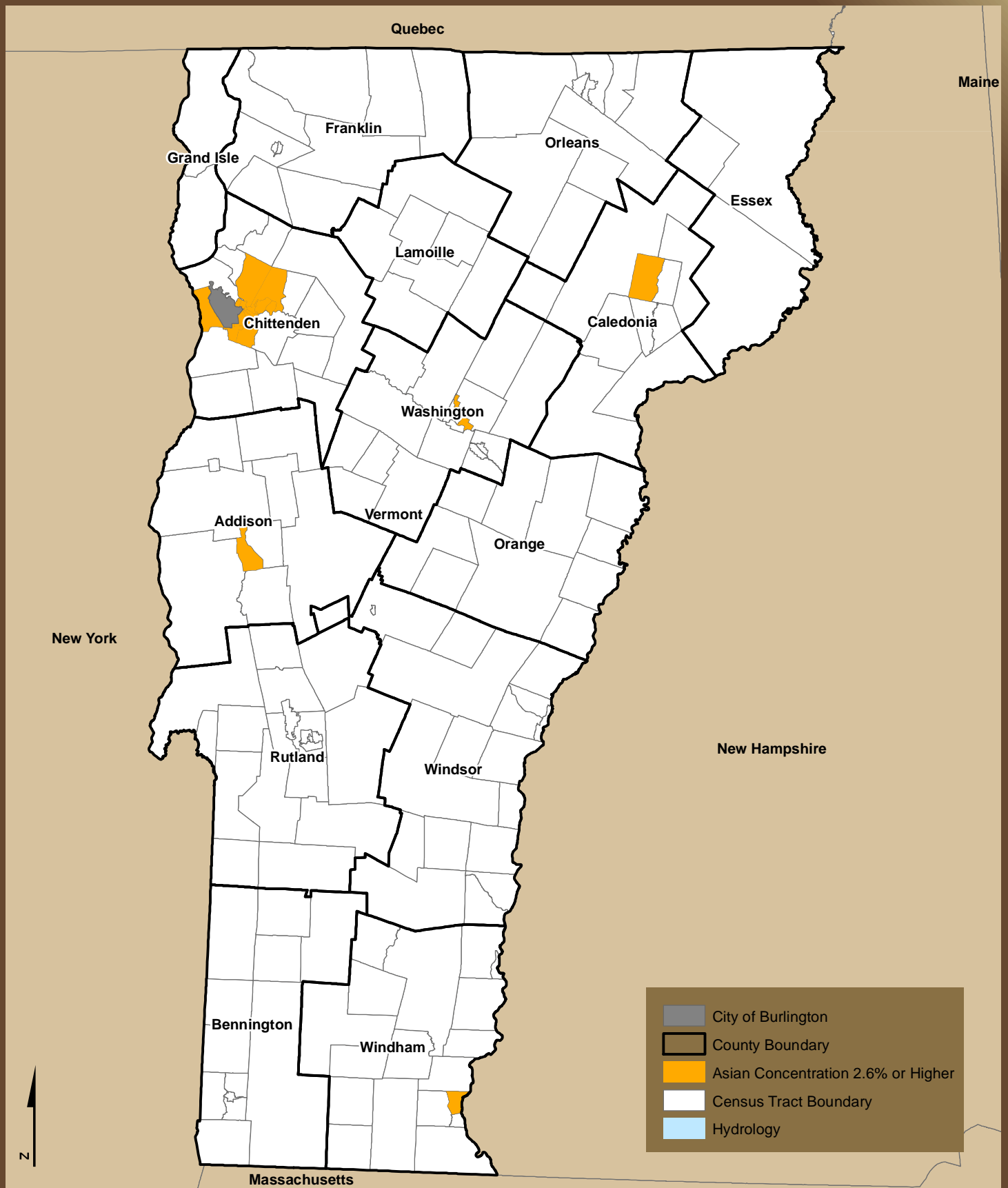
# Map 1: Areas of Minority Concentration of Black Residents, 2010

State of Vermont  
Analysis of Impediments to Fair Housing Choice



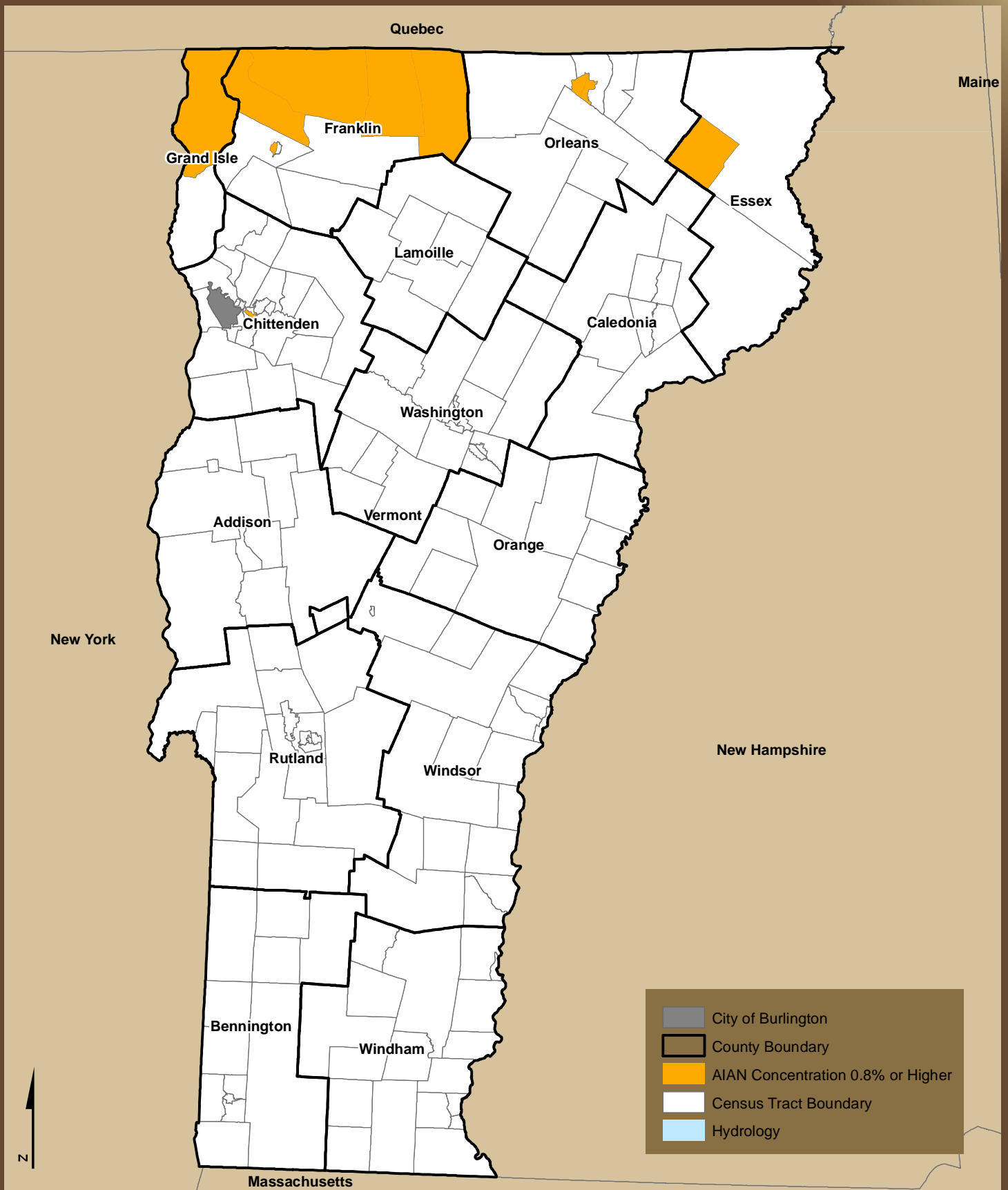
## Map 2: Areas of Minority Concentration of Asian Residents, 2010

State of Vermont  
Analysis of Impediments to Fair Housing Choice



# Map 3: Areas of Minority Concentration of AIAN Residents, 2010

State of Vermont  
Analysis of Impediments to Fair Housing Choice



# Map 4: Areas of Minority Concentration of Hispanic Residents, 2010

State of Vermont  
Analysis of Impediments to Fair Housing Choice

