



Steps to Create a Wetlands Map

If the proposed project includes ground disturbing activities that have the potential to impact on-site or nearby wetlands, the project will be subject to [Executive Order 11990](#) and will be required to create a wetlands map through [USFWS National Wetlands Inventory](#).

To Create a Wetlands Map: Use the [National Wetlands Inventory](#).

STEP 1: Once on the [National Wetlands Inventory](#) website, select the Wetlands Mapper.

Getting Started

Please read the [Disclaimer](#), [Data Limitations, Exclusions and Precautions](#), and the [Wetlands Geodatabase User Caution](#).

Find answers to [Frequently Asked Questions](#).

Documentation and Instructions

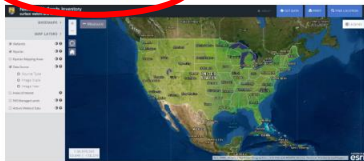
Refer to the following links for documentation and instructions:

- [Wetlands Mapper Documentation and Instructions Manual](#)
- **VIDEO:** [How to find and use the U.S Fish and Wildlife Service's Wetlands Mapper](#)

Launch the Wetlands Mapper

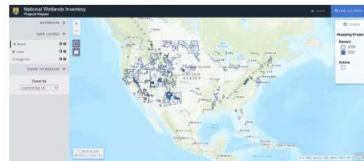
Open either mapper by **clicking on the links below** (best viewed by maximizing your browser window):

[Wetlands Mapper](#)



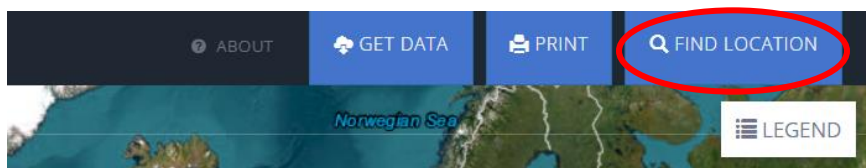
| Image Details

[Projects Mapper](#)



| Image Details

STEP 2: The following page will populate. Select the Find Location button in the top right corner of the screen.



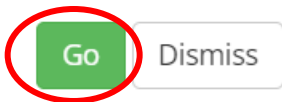


STEP 3: Input your project's location/address and select the Go button.

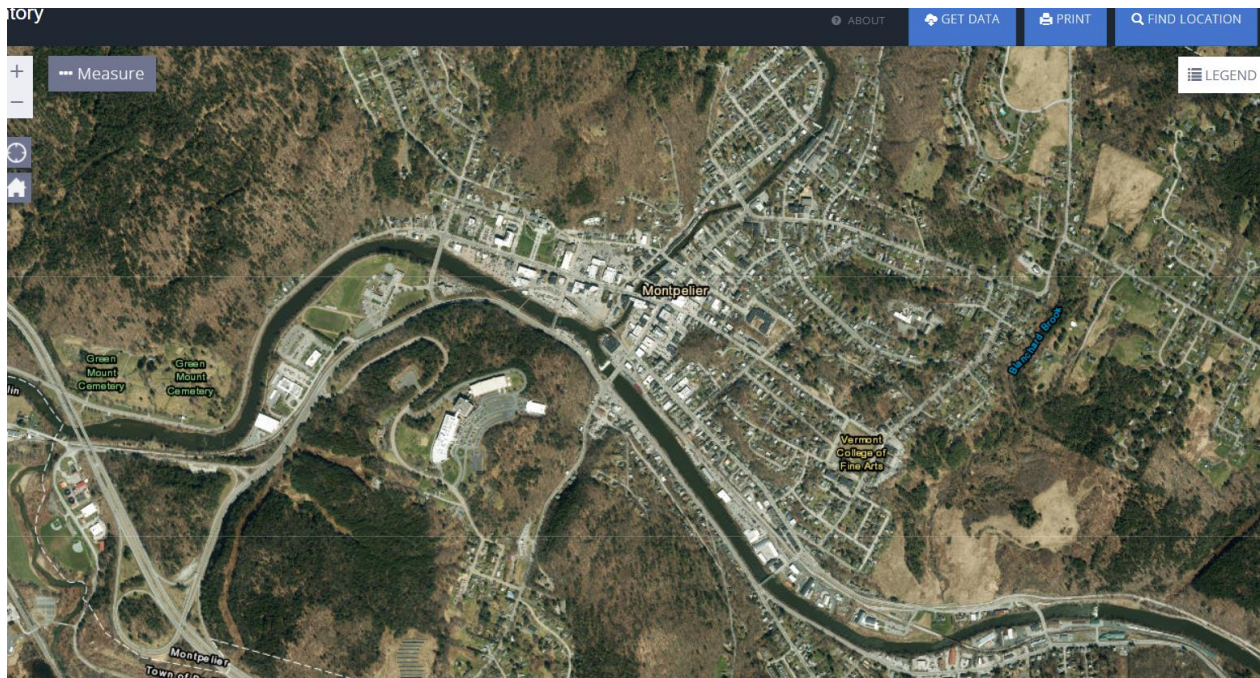
Find Location

Enter a street address, city or place name
For coordinates, enter decimal degrees in Longitude, Latitude format

1 National Life Dr, Montpel

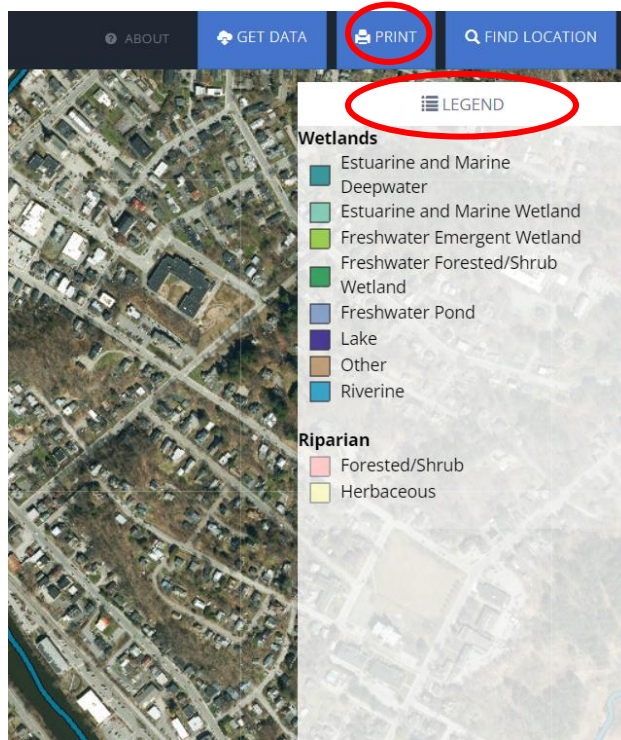


STEP 4: The following page will populate. You can adjust the map as needed, by scrolling in/out.





STEP 5: To include the Legend on your map, select the Legend button in the top right corner of the map and one will populate. Next select the Print button.



STEP 6: Next, you will be prompted to enter the title of the project. Select print and then your project will appear in the Print Jobs list. Select the project title from the list.

 Print Map

Title

Enter a title for your printout

Print

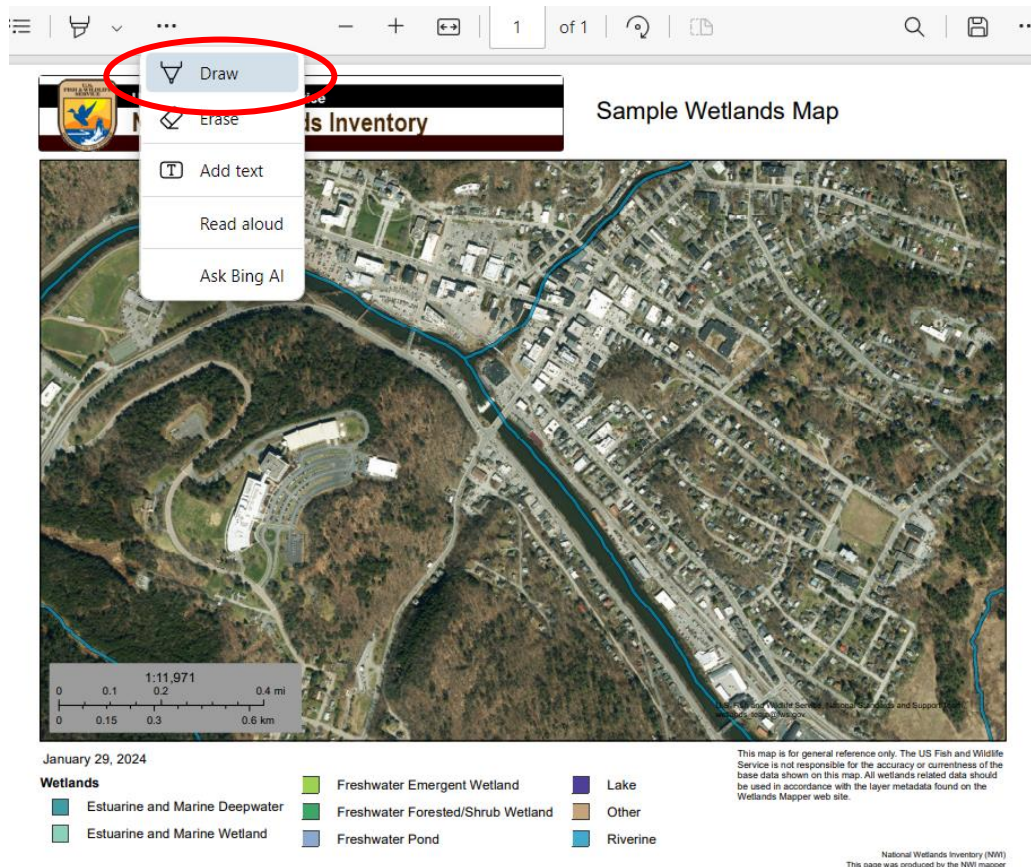
Dismiss

Print Jobs

1: [Sample Wetlands Map](#)



STEP 7: The map will open in a new tab. Select the three dots in the top left corner and select the draw tool to draw in the project area/property boundary. Please define the project accurately for review.



STEP 8: Save the wetlands map as a PDF and upload it to the Supporting Documents page under your Environmental Review on GEARS.

STEP 9: Review the map to determine if there are any wetlands in or near the project area. Discuss these findings in the Environmental Review checklist. Additionally, be sure to discuss whether wetlands are observed during a site visit, as this is required.



Environmental Review Contact Information

Grace Vinson, Environmental Officer
Agency of Commerce & Community Development, DHCD
grace.vinson@vermont.gov, 802-622-4236

Gretel St. Lawrence, Environmental Specialist
Agency of Commerce & Community Development, DHCD
gretel.stlawrence@vermont.gov, 802-636-7255