

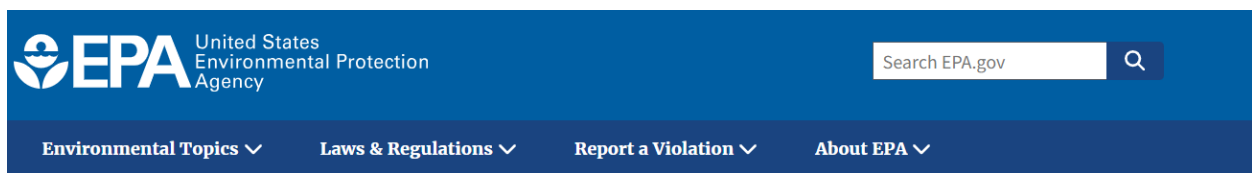


How to Create a NEPAssist Report

Note: This document will include guidance for creating two different reports, a NEPAssist Report & a Tank Study Documentation, using the [EPA's NEPAssist](#) tool.

How to Make a [NEPAssist](#) Report?

STEP 1: Go to the NEPAssist website and enter the project address in the NEPAssist tool search box and select Search.



NEPA

[CONTACT US](#)

NEPA Home

[Learn About NEPA](#)

[Filing an EIS](#)

[EPA's Role in the NEPA Process](#)

[NEPAssist](#)

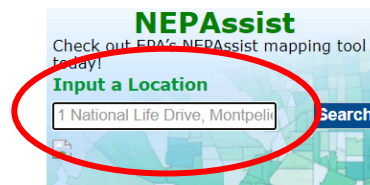
NEPAssist

NEPAssist is a tool that facilitates the environmental review process and project planning in relation to environmental considerations. The web-based application draws environmental data dynamically from EPA Geographic Information System databases and web services and provides immediate screening of environmental assessment indicators for a user-defined area of interest. These features contribute to a streamlined review process that potentially raises important environmental issues at the earliest stages of project development.

Resources for NEPAssist Users

- [NEPAssist User Guide](#) - provides assistance on how to use the NEPAssist tool.
- [Description of Map Features](#) - provides information on available data features in NEPAssist.
- [EJSCREEN](#) - an environmental justice

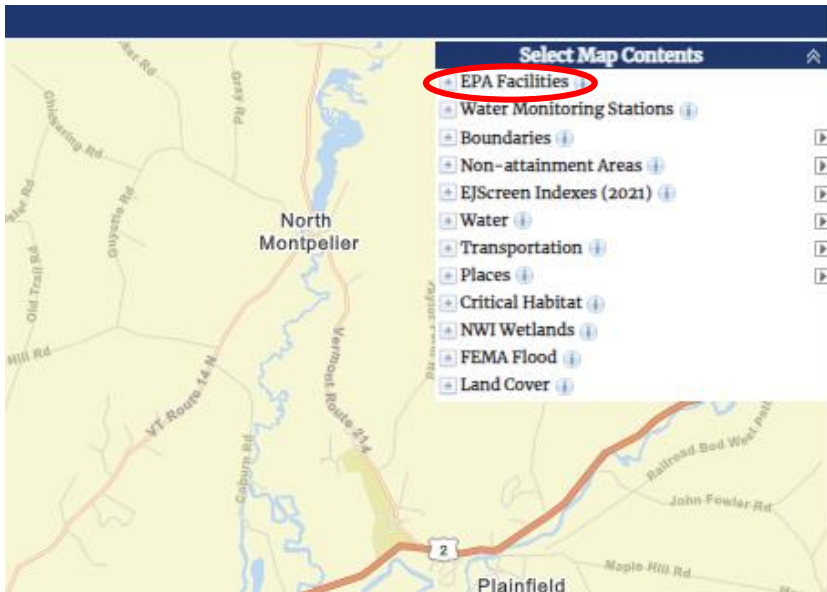
Launch the Tool



- [Launch the NEPAssist Tool](#)



STEP 2: A new page will populate, as shown below. On the right-hand side, select the plus button to expand EPA Facilities.

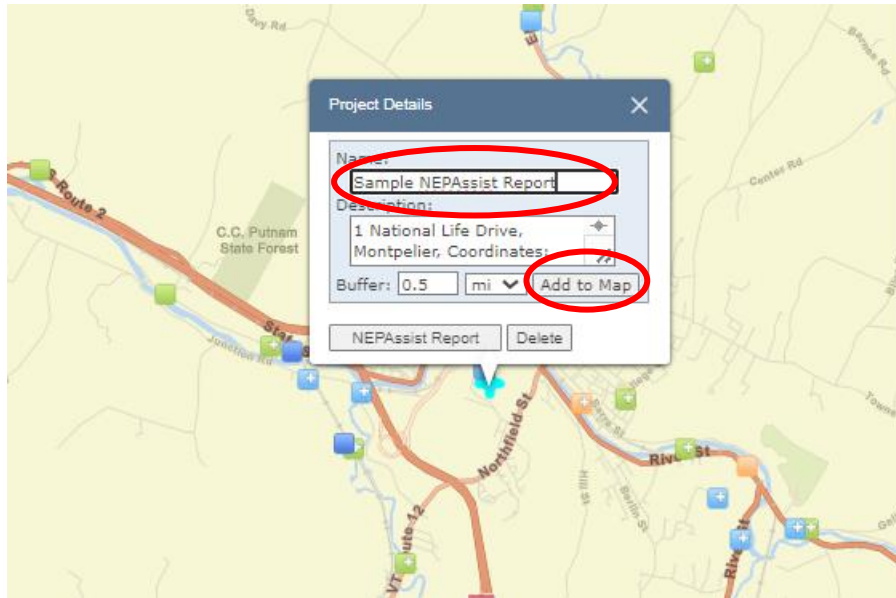


STEP 3: Under the expanded EPA Facilities, check each facility individually.

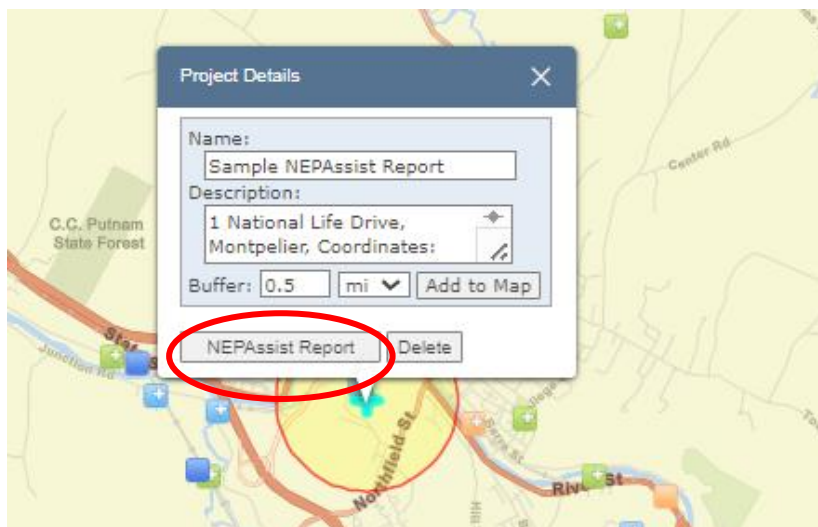




STEP 4: Select the pink cross on the map (representative of your project location) and enter the Project Title. Additionally, next to Buffer (should be 0.5 miles typically), select Add to Map, so that the buffer will be shown in your report.



STEP 5: Once the buffer has been added to the map (shown as a yellow circle below), select the NEPAssist Report button.

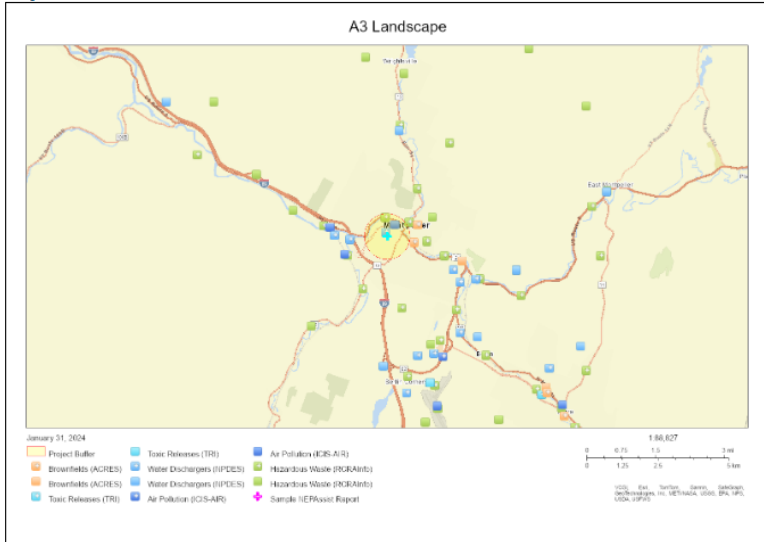




STEP 6: The following page will populate. Note: This is not the NEPAssist Report.

Sample NEPAssist Report

Map



Geographic coordinates:

POINT (44.256285,-72.584406)
 with buffer 0.5 miles

Note: The information in the following reports is based on publicly available databases and web services. The National Report uses nationally available datasets and the State Reports use datasets available through the EPA Regions. Click on the hyperlinked question to view the data source and associated metadata.

National Report

Project Location	44.256285,-72.584406
Within 0.5 miles of an Ozone 1-hr (1979 standard) Non-Attainment/Maintenance Area?	no
Within 0.5 miles of an Ozone 8-hr (1997 standard) Non-Attainment/Maintenance Area?	no
Within 0.5 miles of an Ozone 8-hr (2008 standard) Non-Attainment/Maintenance Area?	no
Within 0.5 miles of an Ozone 8-hr (2015 standard) Non-Attainment/Maintenance Area?	no
Within 0.5 miles of a Lead (2008 standard) Non-Attainment/Maintenance Area?	no
Within 0.5 miles of a SO2 1-hr (2010 standard) Non-Attainment/Maintenance Area?	no
Within 0.5 miles of a PM2.5 24hr (2008 standard) Non-Attainment/Maintenance Area?	no
Within 0.5 miles of a PM2.5 Annual (1997 standard) Non-Attainment/Maintenance Area?	no
Within 0.5 miles of a PM2.5 Annual (2012 standard) Non-Attainment/Maintenance Area?	no
Within 0.5 miles of a PM10 (1987 standard) Non-Attainment/Maintenance Area?	no
Within 0.5 miles of a CO Annual (1971 standard) Non-Attainment/Maintenance Area?	no

STEP 7: Scroll down to the bottom of the page and select "Save as PDF".

Within 0.5 miles of an Essential Fish Habitat (EFH)?

Within 0.5 miles of a Habitat Area of Particular Concern (HAPC)?

Within 0.5 miles of an EFH Area Protected from Fishing (EFHA)?

Within 0.5 miles of a Bureau of Land Management Area of Critical Environmental Concern?

Within 0.5 miles of an ESA-designated Critical Habitat Area per U.S. Fish & Wildlife Service?

Within 0.5 miles of an ESA-designated Critical Habitat river, stream or water feature per U.S. Fish & Wildlife Service?

Save to Excel **Save as PDF**

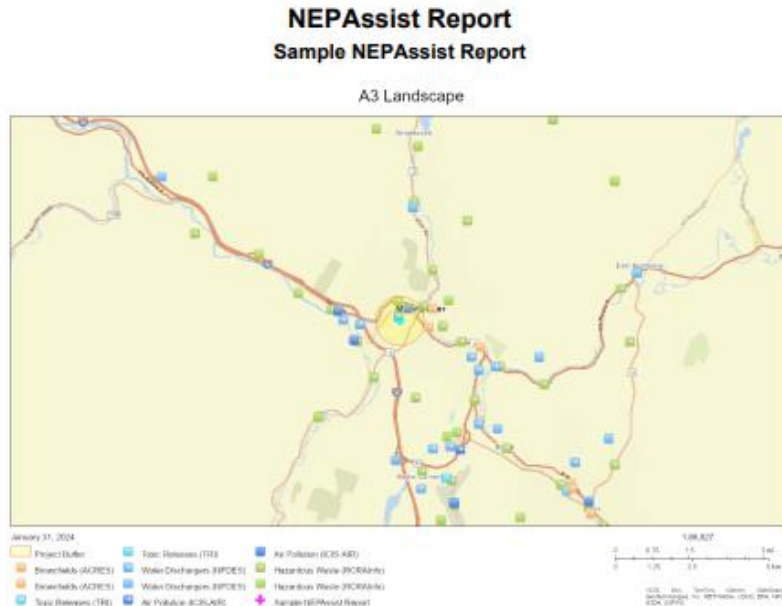
Vermont Report

Demographic Reports

USFWS IPaC Report



STEP 8: The NEPAssist Report will populate, as shown below.



Project Location	44.256285, 72.584406
Within 0.5 miles of an Ozone 1-hr (1979 standard) Non-Attainment/Maintenance Area?	no
Within 0.5 miles of an Ozone 8-hr (1997 standard) Non-Attainment/Maintenance Area?	no
Within 0.5 miles of an Ozone 8-hr (2008 standard) Non-Attainment/Maintenance Area?	no
Within 0.5 miles of an Ozone 8-hr (2015 standard) Non-Attainment/Maintenance Area?	no
Within 0.5 miles of a Lead (2008 standard) Non-Attainment/Maintenance Area?	no
Within 0.5 miles of a SO2 1-hr (2010 standard) Non-Attainment/Maintenance Area?	no
Within 0.5 miles of a PM2.5 24hr (2006 standard) Non-Attainment/Maintenance Area?	no
Within 0.5 miles of a PM2.5 Annual (1997 standard) Non-Attainment/Maintenance Area?	no
Within 0.5 miles of a PM2.5 Annual (2012 standard) Non-Attainment/Maintenance Area?	no
Within 0.5 miles of a PM10 (1987 standard) Non-Attainment/Maintenance Area?	no
Within 0.5 miles of a CO Annual (1971 standard) Non-Attainment/Maintenance Area?	no
Within 0.5 miles of a NO2 Annual (1971 standard) Non-Attainment/Maintenance Area?	no
Within 0.5 miles of a Federal Land?	no
Within 0.5 miles of an impaired stream?	yes
Within 0.5 miles of an impaired waterbody?	yes
Within 0.5 miles of a waterbody?	yes
Within 0.5 miles of a stream?	yes
Within 0.5 miles of an NWI wetland?	Available Online
Within 0.5 miles of a Brownfields site?	yes
Within 0.5 miles of a Superfund site?	no

STEP 9: Save the report as a PDF file. The report can be uploaded to the Supporting Documentation page under your ER on GEARS and should be referenced in the checklist, as needed.



How to Create a Tank Study Documentation through [NEPAssist](#).

If your project triggers compliance with [24 CFR Part 51, Subpart C](#) [Explosive & Flammable Hazards] and requires an analysis of tanks within 1 mile from your project area, please follow the steps below to learn how NEPAssist can help you with the first steps of your tank study. Please Note: Additional information is required in order to satisfy the Explosive & Flammable Hazards requirement.

STEP 1: If you are using this to assist with the tank study, determine if there is a hazardous waste (RCRA) facility found within the search radius (should be 1 mile) of the project area. If it says yes; select yes.

Within 0.5 miles of a Federal Land?	no
Within 0.5 miles of an impaired stream?	yes
Within 0.5 miles of an impaired waterbody?	yes
Within 0.5 miles of a waterbody?	yes
Within 0.5 miles of a stream?	yes
Within 0.5 miles of an NWI wetland?	click here <i>May take several minutes</i>
Within 0.5 miles of a Brownfields site?	yes
Within 0.5 miles of a Superfund site?	no
Within 0.5 miles of a Toxic Release Inventory (TRI) site?	no
Within 0.5 miles of a water discharger (NPDES)?	yes
Within 0.5 miles of a hazardous waste (RCRA) facility?	yes
Within 0.5 miles of an air emission facility?	yes
Within 0.5 miles of a school?	yes



STEP 2: A new page will populate, as shown below. Take a screenshot of this page and save for your tank documentation.

Report question: *Within 1 of a Hazardous waste site? yes*
 Modify question by entering a new buffer distance and unit for the selected study area:

Name	Distance
MONPELIER WATER RESOURCE RECOVERY FACILITY (MONTPELIER,VT)	0.80 miles
GMP MONTPELIER SERVICE CENTER (MONTPELIER,VT)	0.30 miles
NATIONAL LIFE INSURANCE COMPANY INC (MONTPELIER,VT)	0.10 miles
JOHNSON COMPANY G C LAB (MONTPELIER,VT)	0.42 miles
SHERWIN WILLIAMS CO (MONTPELIER,VT)	0.47 miles
GREAT AMERICAN SALVAGE (MONTPELIER,VT)	0.38 miles
VTRANS MONTPELIER 133 STATE (MONTPELIER,VT)	0.39 miles
SUMMIT STORE 3 (MONTPELIER,VT)	0.34 miles
VTRANS MONT 120 STATE (MONTPELIER,VT)	0.39 miles
CUMBERLAND FARMS 4024 (MONTPELIER,VT)	0.42 miles
VT DEPT OF AGRICULTURE (MONTPELIER,VT)	0.40 miles
VT DEPT OF WATER RESOURCES LAB 6 (MONTPELIER,VT)	0.46 miles
BOBS SUNOCO INC (MONTPELIER,VT)	0.30 miles
J W SANDRI OF VT INC (MONTPELIER,VT)	0.30 miles
WESCO INC STATE ST GULF (MONTPELIER,VT)	0.42 miles
IBS AUTO REPAIR (MONTPELIER,VT)	0.89 miles
VT DEPT OF BGS 10 TAYLOR MAINT SHOP (MONTPELIER,VT)	0.32 miles
PREMIUM PETROLEUM CAPITAL SUELL (MONTPELIER,VT)	0.41 miles

Note: This portion of the NEPAassist report only helps guide you to facilities that may have above ground storage tanks (ASTs). This database can help indicate possible sites with tanks, which is helpful to start the tank study. However, it is possible that none of the RCRA facilities have ASTs.

Environmental Review Contact Information

Grace Vinson, Environmental Officer
 Agency of Commerce & Community Development, DHCD
 grace.vinson@vermont.gov, 802-622-4236

Gretel St. Lawrence, Environmental Specialist
 Agency of Commerce & Community Development, DHCD
 gretel.stlawrence@vermont.gov, 802-636-7255



State of Vermont, Agency of Commerce & Community Development
How to Make a NEPAassist Report?