



Steps to Create a Flood Map

All projects must create a FIRMette through the FEMA Map Service Center to comply with Floodplain Management [Executive Order 11988](#).

To Create a Flood Map: Use the [FEMA Map Service Center](#).

STEP 1: Once on the [FEMA Map Service Center](#) website, enter the project location and select the Search button.

FEMA Flood Map Service Center: Welcome!

Looking for a Flood Map? ⓘ

Enter an address, a place, or longitude/latitude coordinates:

Enter an address, a place, or longitude/latitude coordinates

Search



Looking for more than just a current flood map?

Visit [Search All Products](#) to access the full range of flood risk products for your community.

STEP 2: A new screen will populate with a map for your project area, as shown below.

Search Results—Products for **WASHINGTON COUNTY** Show ALL Products >

The flood map for the selected area is number **50023C0264E**, effective on **2/19/2013**

DYNAMIC MAP 	MAP IMAGE 	Changes to this FIRMette ⓘ
		<ul style="list-style-type: none"> Revisions (0) Amendments (44) Revalidations (1)

You can choose a new flood map or move the location pin by selecting a different location on the locator map below or by entering a new location in the search field above. It may take a minute or more during peak hours to generate a dynamic FIRMette. Go To NFHL Viewer >

Esri, USDA, Farm Service Agency, Microsoft Powered by Esri



STEP 3: Select the Print Map/FIRMette option under Dynamic Map.

The flood map for the selected area is number **50023C0264E**, effective on **3/19/2013**

DYNAMIC MAP



PRINT MAP/
FIRMette

MAP IMAGE

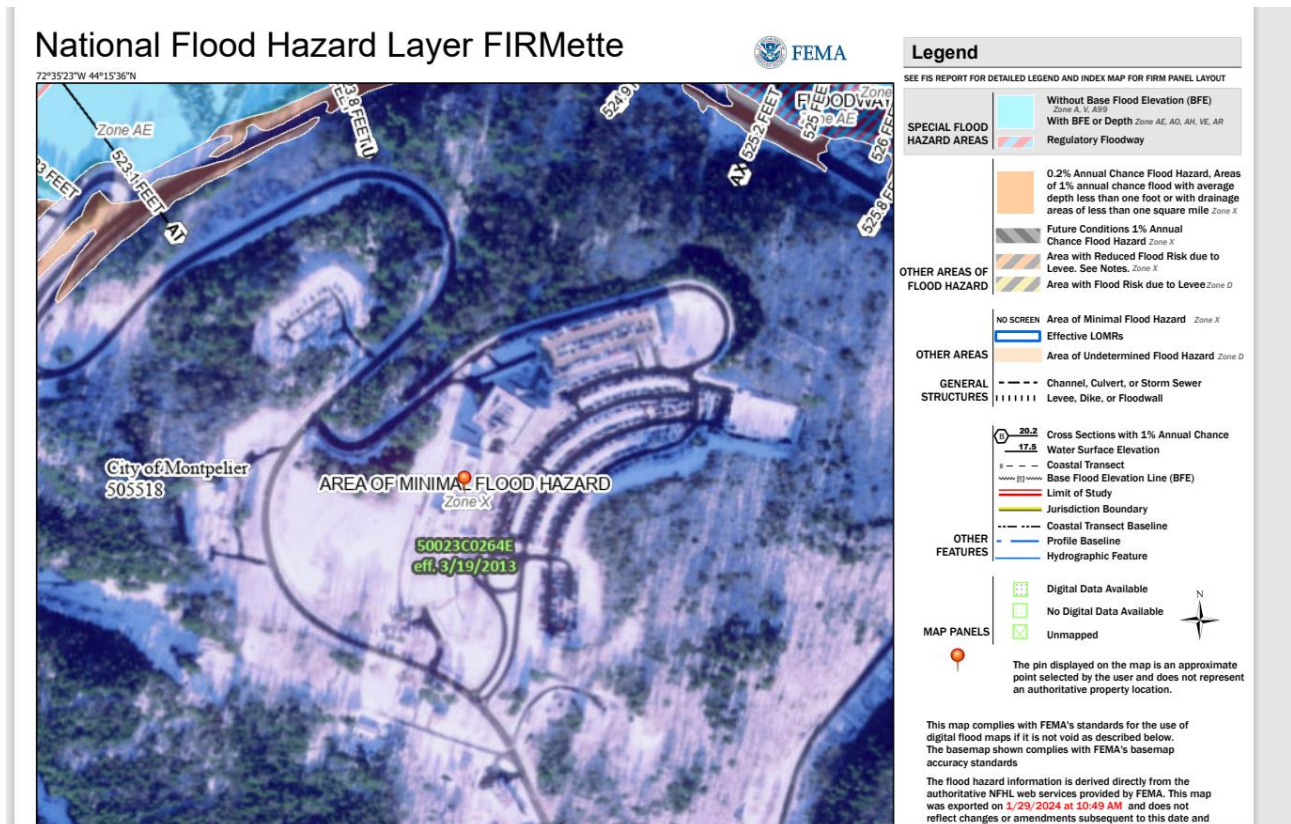


DOWNLOAD
FIRMette

Changes to this FIRMette [?](#)

-  Revisions (0)
-  Amendments (44)
-  Revalidations (1)

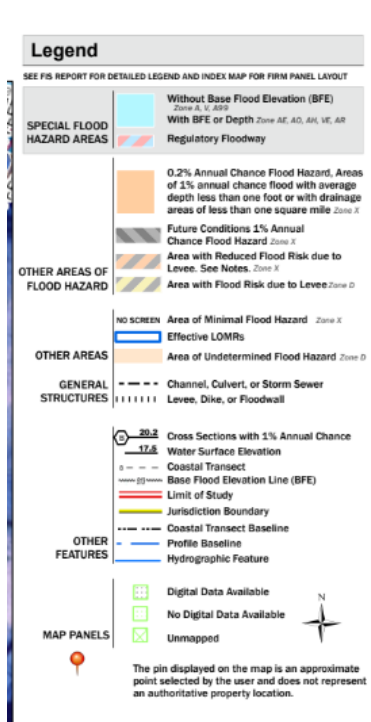
STEP 4: A new tab will open and populate with a page like the one shown below.



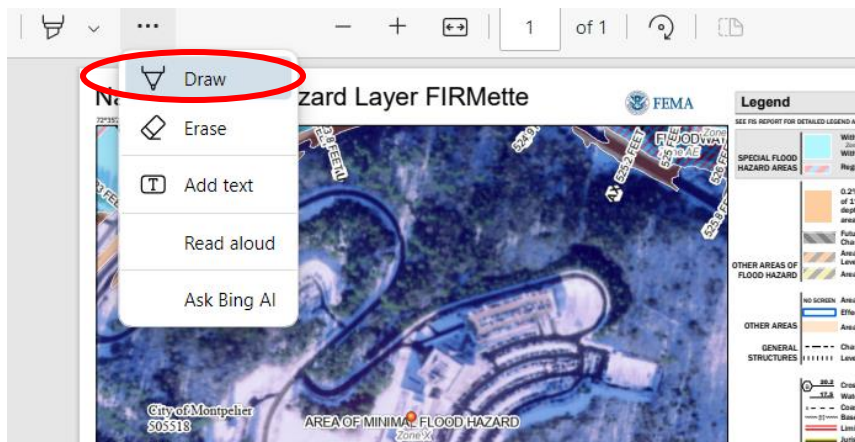


STEP 5: Right click the map to save as a PDF.

STEP 6: The legend for interpreting the map can be found in the right-hand column of the map.



STEP 7: When your FIRMette opens as a PDF (in Adobe Acrobat), select the 3 dots in the upper left-hand corner and select the Draw feature to draw in the Project Area/Property Boundary.



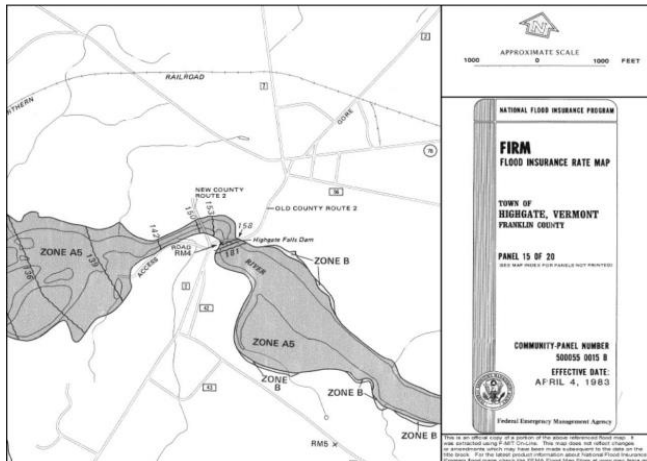


STEP 8: It is important to accurately define the Project Area AND the Property Boundary (if they differ).

STEP 9: Upload your labeled FIRMette to the Supporting Documents page under your Environmental Review on GEARS.

STEP 10: Determine if the proposed Project Area contains the 100-year floodplain, 500-year floodplain, or the floodway. Discuss this in the appropriate checklist and through additional documentation if applicable (e.g. 8-Step).

Please Note: If the FIRMette for your project area is older, your FIRMette may look something more like the following, meaning digital data is not available:



See below for steps for how to retrieve your FIRMette if no digital data is available.



STEP 1: If there is no digital data available for your project area, when you populate the map for your project location, the map will be overlaid with green dots as shown below.

Search Results—Products for **LYNDON,TWN / CALEDONIA CO** [Show ALL Products »](#)

The flood map for the selected area is number **5000280020B**, effective on **5/17/1988**



Changes to this FIRM [?](#)

- Revisions (0)
- Amendments (27)
- Revalidations (0)

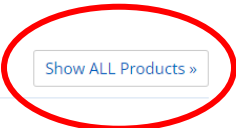
You can choose a new flood map or move the location pin by selecting a different location on the locator map below or by entering a new location in the search field above. It may take a minute or more during peak hours to generate a dynamic FIRMette.



STEP 2: If this is the case for your project, write down the Flood Panel # (written in green on the map). In this example, it is 50023C0264E.

STEP 3: Next, select the Show All Products button in the top right corner.

Search Results for **LYNDON,TWN / CALEDONIA CO**



The flood map for the selected area is number **5000280020B**, effective on **5/17/1988**



Changes to this FIRM [?](#)

- Revisions (0)
- Amendments (27)
- Revalidations (0)

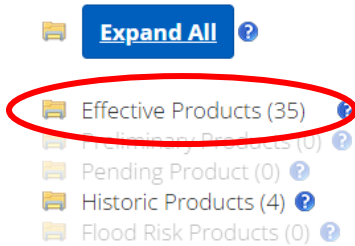
You can choose a new flood map or move the location pin by selecting a different location on the locator map below or by entering a new location in the search field above. It may take a minute or more during peak hours to generate a dynamic FIRMette.



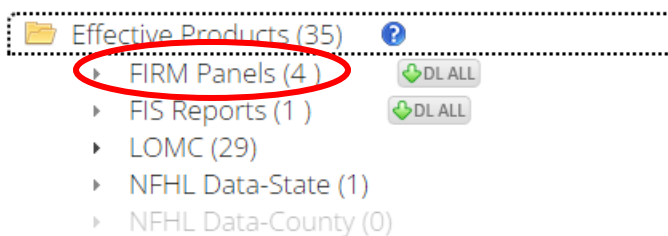


STEP 4: You will be brought to a new window, as shown below. Select the Effective Products button.

Please Note: Searching All Products by county displays your search results by specifying your specific jurisdiction



STEP 5: Select the FIRM Panels option that populates next.



STEP 6: Scroll through the list of FIRM Panels. Match up the Panel ID recorded earlier in the process to the listed Product IDs. Once you find the match, download the map, and outline the Project Area/Property Boundary.

Environmental Review Contact Information

Grace Vinson, Environmental Officer
Agency of Commerce & Community Development, DHCD
grace.vinson@vermont.gov, 802-622-4236

Gretel St. Lawrence, Environmental Specialist
Agency of Commerce & Community Development, DHCD
gretel.stlawrence@vermont.gov, 802-636-7255